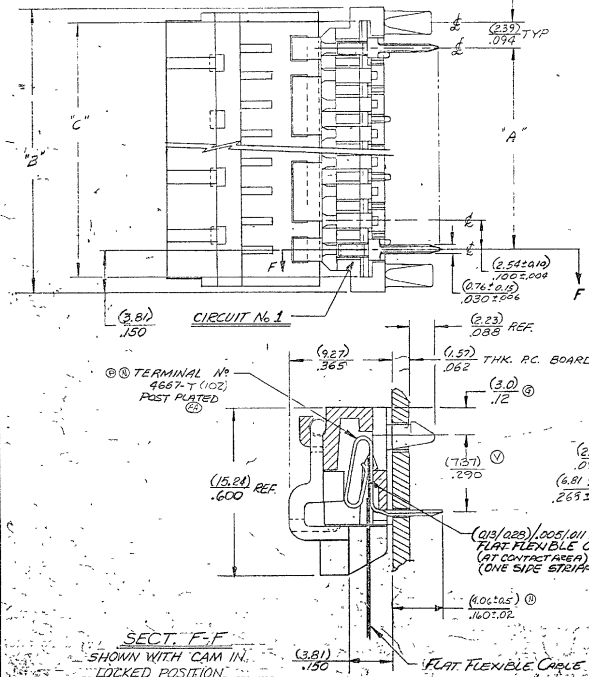
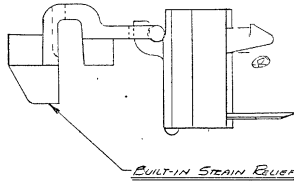
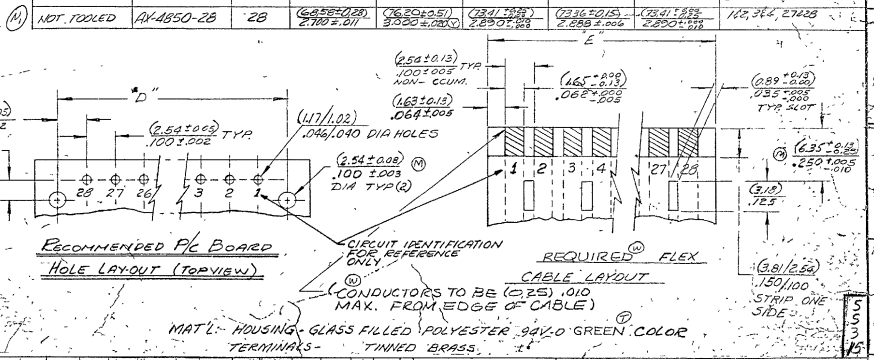


NOTES:
1) SEE PS-4850 FOR REFERENCE.



PART NO.	ENG NO.	NUMBER OF CIRCUITS	DIM. A	DIM. B	DIM. C	DIM. D	DIM. E	CABLE SLOTS FOR STRAIN RELIEF LOCATED BETWEEN @
15-25-4051	A-4850-5	5	(10.16 ± 0.05) 400 ± 0.06	(17.78 ± 0.51) 700 ± 0.02	(4.99 ± 0.28) @ 590 ± 0.05	(4.91 ± 0.09) 588 ± 0.03	(19.91 ± 0.05) 590 ± 0.03	1 & 2, 3 & 4
-406	-6	6	(2.20 ± 0.05) 500 ± 0.05	(0.32 ± 0.02) 800 ± 0.02	(2.53 ± 0.02) 890 ± 0.02	(2.47 ± 0.02) 888 ± 0.03	(7.53 ± 0.02) 890 ± 0.02	4 & 5
-4071	-7	7	(5.24 ± 0.18) 800 ± 0.07	(2.26 ± 0.02) 900 ± 0.02	(2.06 ± 0.02) 990 ± 0.02	(2.02 ± 0.02) 988 ± 0.03	(20.06 ± 0.02) 990 ± 0.02	5 & 6
-4081	-8	8	(7.79 ± 0.18) 700 ± 0.07	(2.80 ± 0.02) 1000 ± 0.02	(2.61 ± 0.02) 1090 ± 0.02	(2.56 ± 0.02) 1088 ± 0.03	(22.61 ± 0.02) 1090 ± 0.02	3 & 4, 7 & 8
-4091	-9	9	(20.32 ± 0.18) 900 ± 0.07	(2.92 ± 0.02) 1100 ± 0.02	(2.85 ± 0.02) 1190 ± 0.02	(2.80 ± 0.02) 1188 ± 0.03	(25.85 ± 0.02) 1190 ± 0.02	8 & 9
-4101	-10	10	(22.86 ± 0.18) 900 ± 0.08	(3.05 ± 0.02) 1200 ± 0.02	(2.97 ± 0.02) 1290 ± 0.02	(2.92 ± 0.02) 1288 ± 0.03	(27.67 ± 0.02) 1290 ± 0.02	9 & 10
-4111	-11	11	(25.40 ± 0.18) 1000 ± 0.08	(3.02 ± 0.02) 1300 ± 0.02	(3.02 ± 0.02) 1390 ± 0.02	(3.01 ± 0.02) 1388 ± 0.03	(30.23 ± 0.02) 1390 ± 0.02	10 & 11
-4121	-12	12	(27.94 ± 0.20) 1100 ± 0.08	(3.56 ± 0.02) 1400 ± 0.02	(3.27 ± 0.02) 1490 ± 0.02	(3.21 ± 0.02) 1488 ± 0.03	(32.77 ± 0.02) 1490 ± 0.02	11 & 12
-4131	-13	13	(30.48 ± 0.20) 1200 ± 0.08	(3.80 ± 0.02) 1500 ± 0.02	(3.51 ± 0.02) 1590 ± 0.02	(3.52 ± 0.02) 1588 ± 0.03	(35.31 ± 0.02) 1590 ± 0.02	12 & 13
-4141	-14	14	(33.02 ± 0.23) 1300 ± 0.09	(4.04 ± 0.02) 1600 ± 0.02	(3.78 ± 0.02) 1690 ± 0.02	(3.77 ± 0.02) 1688 ± 0.03	(37.85 ± 0.02) 1690 ± 0.02	13 & 14
-4151	-15	15	(35.56 ± 0.23) 1400 ± 0.09	(4.28 ± 0.02) 1700 ± 0.02	(4.03 ± 0.02) 1790 ± 0.02	(4.04 ± 0.02) 1788 ± 0.03	(40.39 ± 0.02) 1790 ± 0.02	14 & 15
-4161	-16	16	(38.10 ± 0.23) 1500 ± 0.09	(4.52 ± 0.02) 1800 ± 0.02	(4.31 ± 0.02) 1890 ± 0.02	(4.32 ± 0.02) 1888 ± 0.03	(42.93 ± 0.02) 1890 ± 0.02	15 & 16
-4171	-17	17	(40.64 ± 0.23) 1600 ± 0.09	(4.76 ± 0.02) 1900 ± 0.02	(4.57 ± 0.02) 1990 ± 0.02	(4.58 ± 0.02) 1988 ± 0.03	(45.47 ± 0.02) 1990 ± 0.02	16 & 17
-4181	-18	18	(43.18 ± 0.23) 1700 ± 0.10	(5.00 ± 0.02) 2000 ± 0.02	(4.80 ± 0.02) 2090 ± 0.02	(4.81 ± 0.02) 2088 ± 0.03	(48.01 ± 0.02) 2090 ± 0.02	17 & 18
-4191	-19	19	(45.72 ± 0.23) 1800 ± 0.10	(5.24 ± 0.02) 2100 ± 0.02	(5.05 ± 0.02) 2190 ± 0.02	(5.06 ± 0.02) 2188 ± 0.03	(50.55 ± 0.02) 2190 ± 0.02	18 & 19
-4201	-20	20	(48.26 ± 0.23) 1900 ± 0.10	(5.48 ± 0.02) 2200 ± 0.02	(5.29 ± 0.02) 2290 ± 0.02	(5.30 ± 0.02) 2288 ± 0.03	(53.09 ± 0.02) 2290 ± 0.02	19 & 20
-4211	-21	21	(50.80 ± 0.23) 2000 ± 0.10	(5.72 ± 0.02) 2300 ± 0.02	(5.63 ± 0.02) 2390 ± 0.02	(5.64 ± 0.02) 2388 ± 0.03	(55.63 ± 0.02) 2390 ± 0.02	20 & 21
-4221	-22	22	(53.34 ± 0.23) 2100 ± 0.10	(5.96 ± 0.02) 2400 ± 0.02	(5.87 ± 0.02) 2490 ± 0.02	(5.88 ± 0.02) 2488 ± 0.03	(58.17 ± 0.02) 2490 ± 0.02	21 & 22
-4231	-23	23	(55.88 ± 0.23) 2200 ± 0.10	(6.20 ± 0.02) 2500 ± 0.02	(6.09 ± 0.02) 2590 ± 0.02	(6.10 ± 0.02) 2588 ± 0.03	(60.71 ± 0.02) 2590 ± 0.02	22 & 23
-4241	-24	24	(58.42 ± 0.23) 2300 ± 0.10	(6.44 ± 0.02) 2600 ± 0.02	(6.35 ± 0.02) 2690 ± 0.02	(6.36 ± 0.02) 2688 ± 0.03	(63.25 ± 0.02) 2690 ± 0.02	23 & 24
15-25-4251	A-4850-25	25	(60.96 ± 0.23) 2400 ± 0.11	(6.68 ± 0.51) 2700 ± 0.02	(6.59 ± 0.36) 2790 ± 0.03	(6.60 ± 0.36) 2788 ± 0.03	(67.79 ± 0.36) 2790 ± 0.02	24 & 25



REV.	DATE	DESCRIPTION
1		INITIAL DESIGN
2		REVISED TO INCLUDE...
3		REVISED TO INCLUDE...
4		REVISED TO INCLUDE...
5		REVISED TO INCLUDE...
6		REVISED TO INCLUDE...
7		REVISED TO INCLUDE...
8		REVISED TO INCLUDE...
9		REVISED TO INCLUDE...
10		REVISED TO INCLUDE...
11		REVISED TO INCLUDE...
12		REVISED TO INCLUDE...
13		REVISED TO INCLUDE...
14		REVISED TO INCLUDE...
15		REVISED TO INCLUDE...
16		REVISED TO INCLUDE...
17		REVISED TO INCLUDE...
18		REVISED TO INCLUDE...
19		REVISED TO INCLUDE...
20		REVISED TO INCLUDE...
21		REVISED TO INCLUDE...
22		REVISED TO INCLUDE...
23		REVISED TO INCLUDE...
24		REVISED TO INCLUDE...
25		REVISED TO INCLUDE...
26		REVISED TO INCLUDE...
27		REVISED TO INCLUDE...
28		REVISED TO INCLUDE...
29		REVISED TO INCLUDE...
30		REVISED TO INCLUDE...
31		REVISED TO INCLUDE...
32		REVISED TO INCLUDE...
33		REVISED TO INCLUDE...
34		REVISED TO INCLUDE...
35		REVISED TO INCLUDE...
36		REVISED TO INCLUDE...
37		REVISED TO INCLUDE...
38		REVISED TO INCLUDE...
39		REVISED TO INCLUDE...
40		REVISED TO INCLUDE...
41		REVISED TO INCLUDE...
42		REVISED TO INCLUDE...
43		REVISED TO INCLUDE...
44		REVISED TO INCLUDE...
45		REVISED TO INCLUDE...
46		REVISED TO INCLUDE...
47		REVISED TO INCLUDE...
48		REVISED TO INCLUDE...
49		REVISED TO INCLUDE...
50		REVISED TO INCLUDE...
51		REVISED TO INCLUDE...