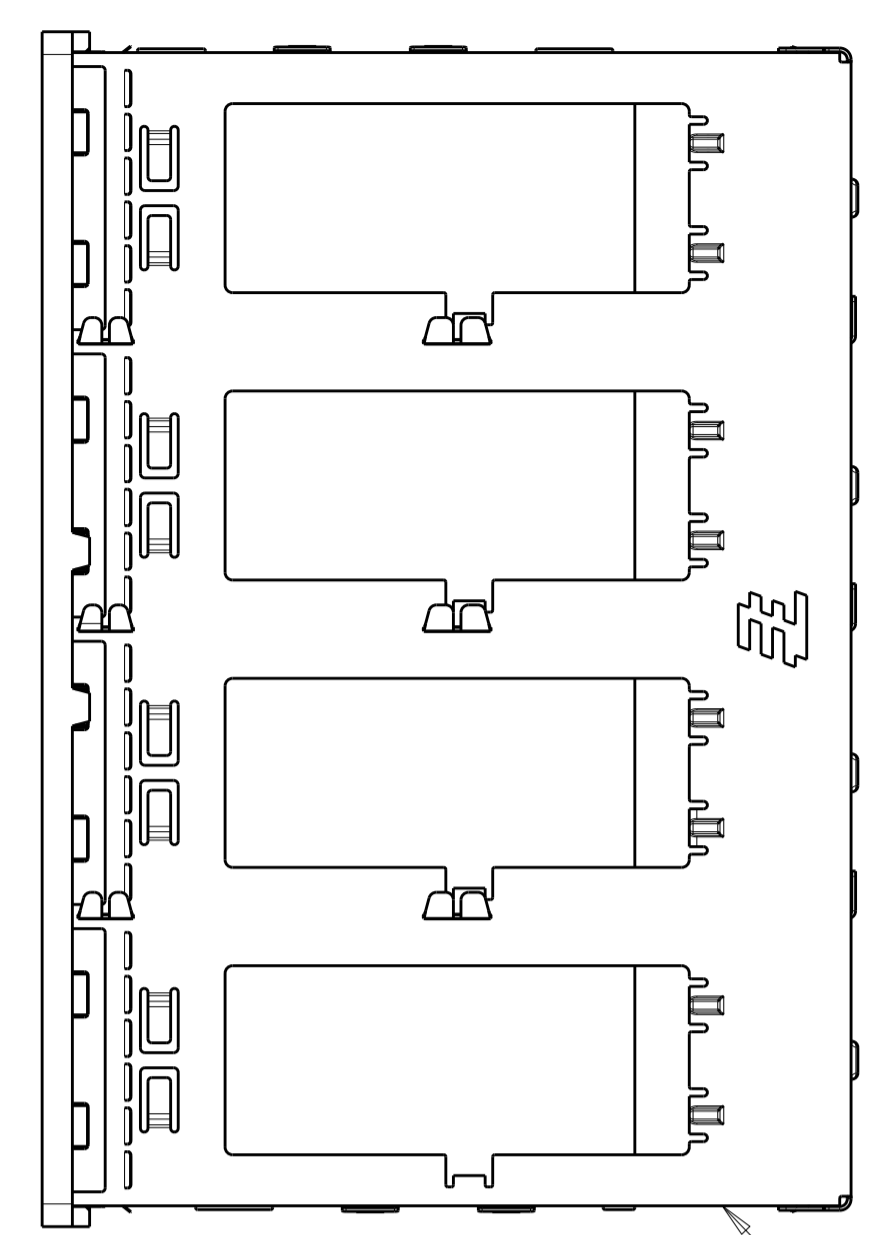
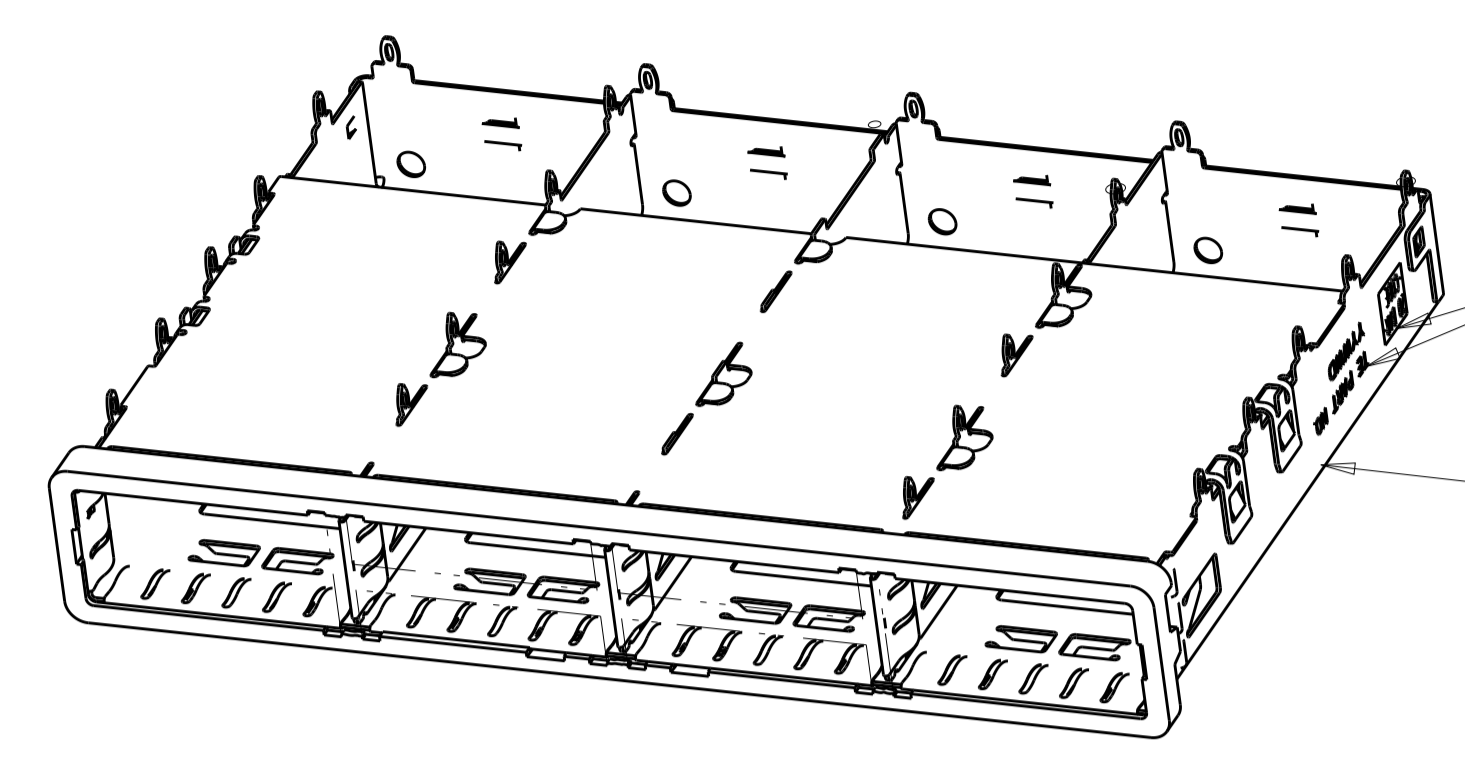


LOC	DIST	REVISIONS					
GP	00	P.	LTN	DESCRIPTION	DATE	DWN	APVD
		E		REVISED PER ECR-12-009968	31MAY2012	DZ	AC
		F		REVISED PER ECO-13-020244	31DEC2013	ZJ	JY
		G		REVISED PER ECO-15-000148	10APR2015	RG	MC

- 1 SURFACE TRACES PERMITTED WITHIN THIS AREA EXCEPT WHERE CAGE STANDOFFS, SHOWN IN DETAIL S, CONTACT PC BOARD.
- 2 PITCH BETWEEN PORTS OF ONE 1X4 CAGE.
- 3 SPACING BETWEEN CAGES ON THE SAME PC BOARD. TO BE SPECIFIED BY CUSTOMER, MUST COMPLY WITH MINIMUM DIMENSIONS SHOWN.
- 4 REFERENCE APPLICATION SPEC 114-13218 FOR RECOMMENDED DRILL HOLE DIAMETER AND PLATING THICKNESS.
- 5 UNPLATED THRU HOLE.
- 6 DATUM AND BASIC DIMENSION ESTABLISHED BY CUSTOMER.
- 7 DATUM -A- IS TOP SURFACE OF THE HOST BOARD.
- 8 DIMENSION C IS THE NOMINAL THICKNESS OF CUSTOMER SUPPLIED PC BOARD. MINIMUM PC BOARD THICKNESS:
 SINGLE SIDED: 1.45mm
 DOUBLE SIDED: 2.2mm PER QSFP
- 9. MATES WITH QSFP MSA COMPATIBLE TRANSCEIVER.
- 10 BASELINE FOR THE DIMENSION IS CENTER OF COMPLIANT PIN HOLE.
- 11 2D BARCODE AND DATE CODE (YYWW) MARKED APPROXIMATELY AS SHOWN.
- 12 REFERENCE APP SPEC 114-13218 FOR GASKET THICKNESS CALCULATION.
- 13 MATERIAL:
 CAGE ASSEMBLY: NICKEL SILVER, 0.25 THICK
 EMI SPRINGS: COPPER ALLOY
 FRONT FLANGE: ZINC ALLOY.
- 14 FINISH:
 EMI SPRINGS: 2um MINIMUM TIN
 FRONT FLANGE: 3um MINIMUM TIN OVER 1.27um MINIMUM NICKEL OVER 5.08um MINIMUM COPPER
- 15 HOLES ARE OPTIONAL WHEN PINS ON CENTRAL DIVIDER ARE REMOVED.



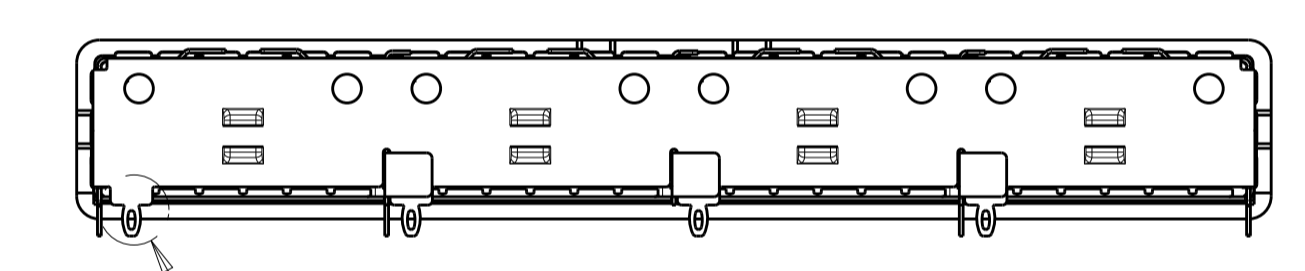
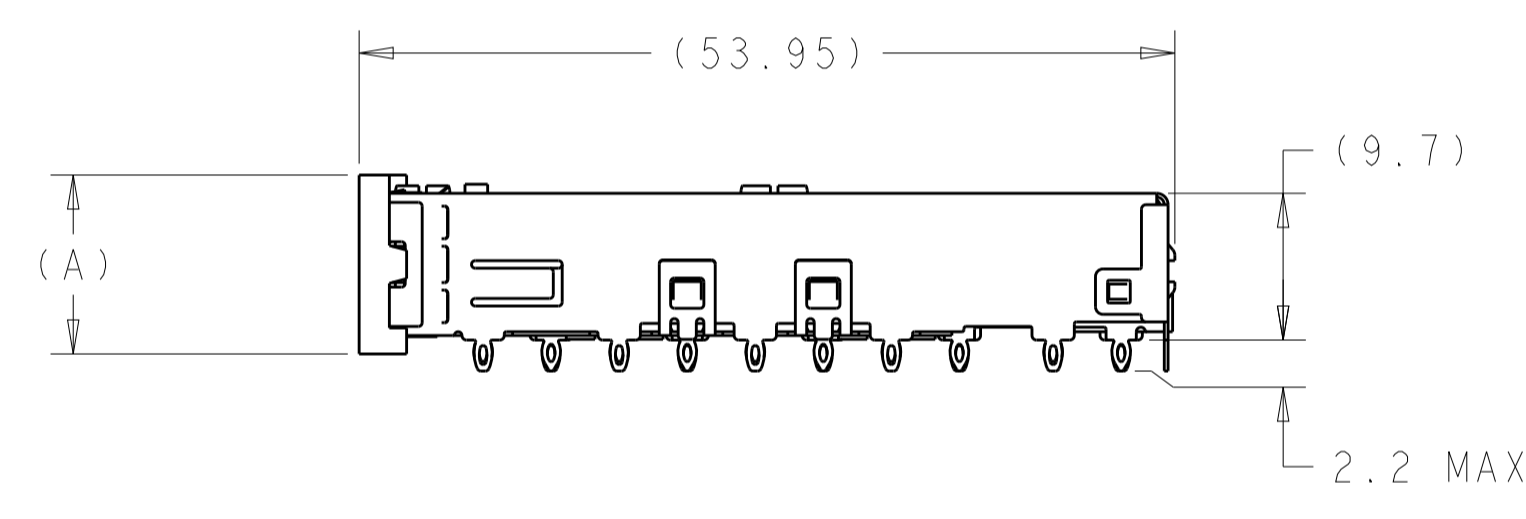
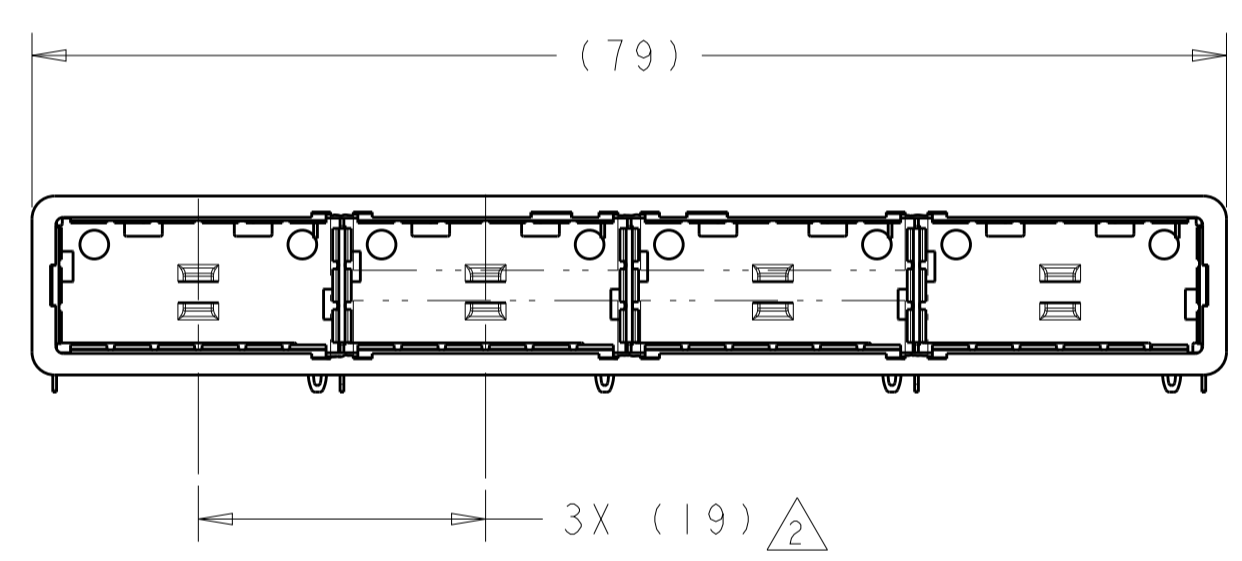
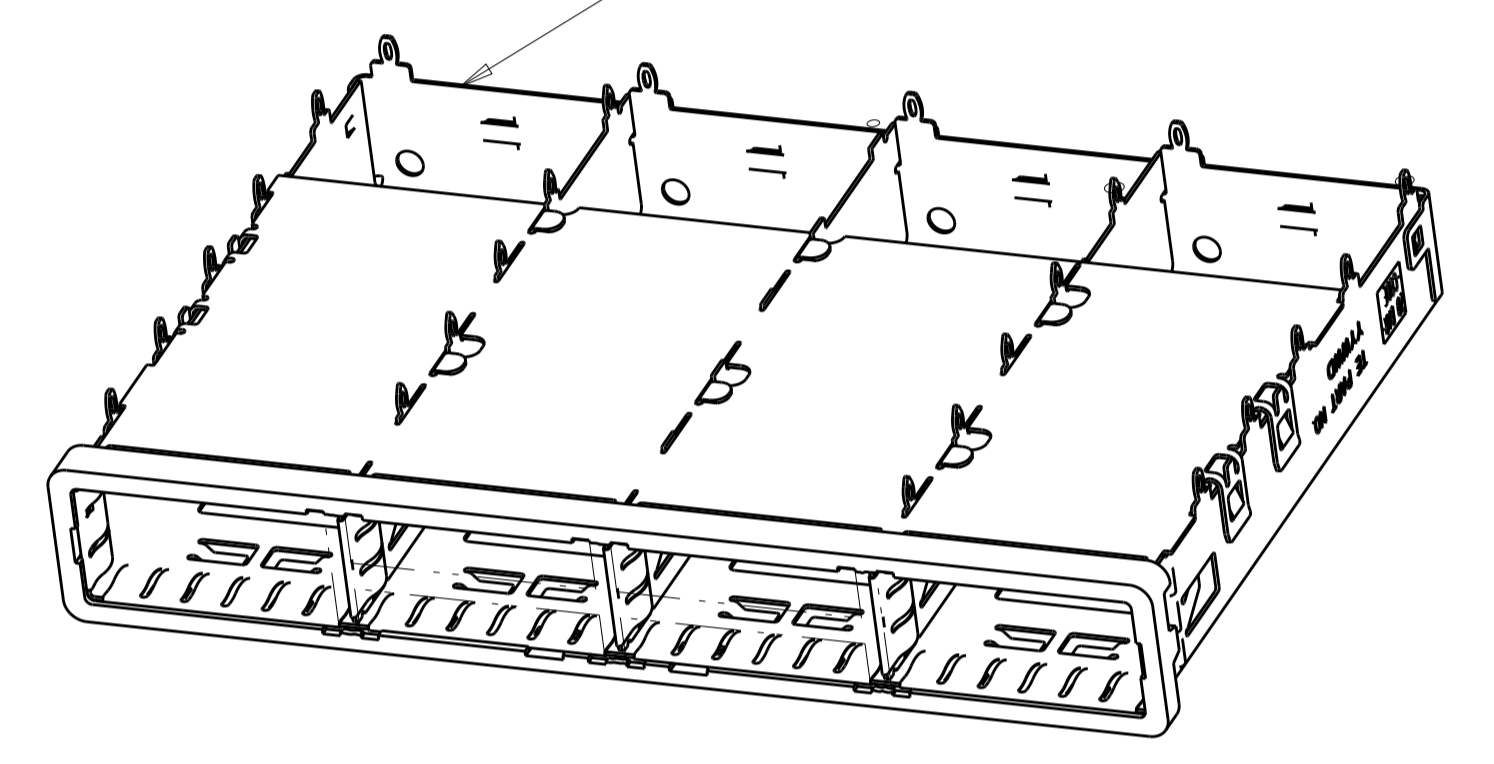
EMI SPRINGS CAGE ASSEMBLY



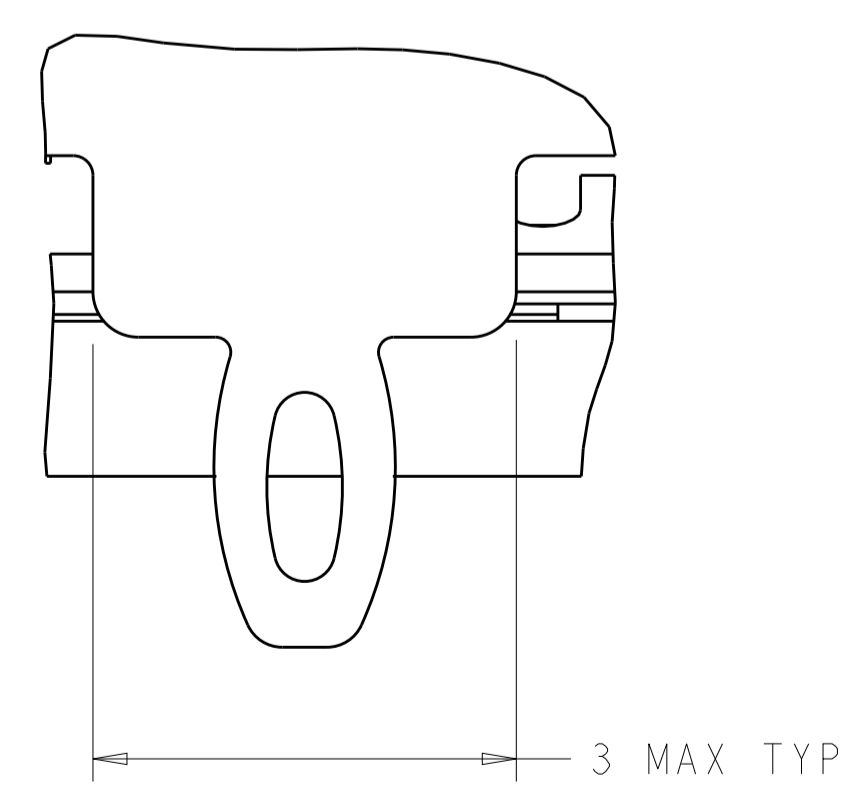
2D BARCODE AND DATE CODE

2007667-1

2007667-5

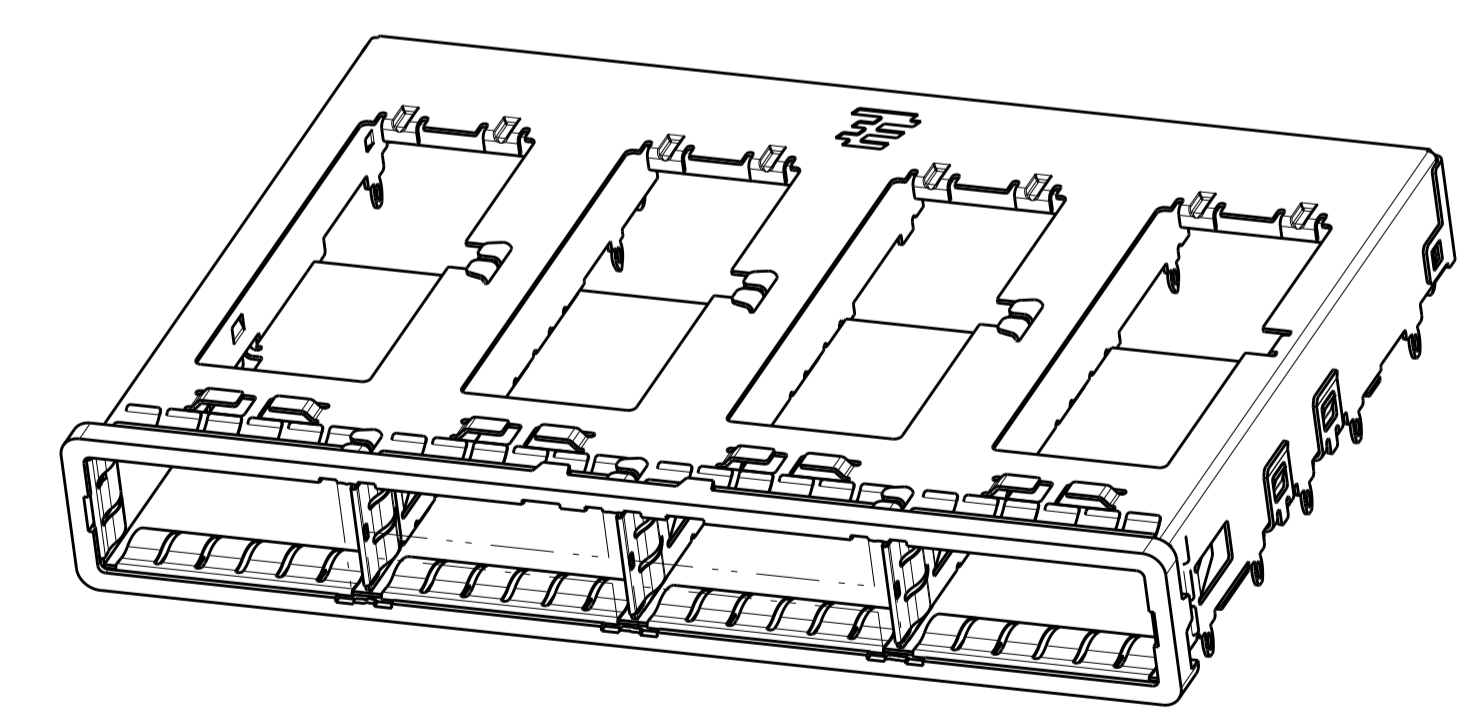
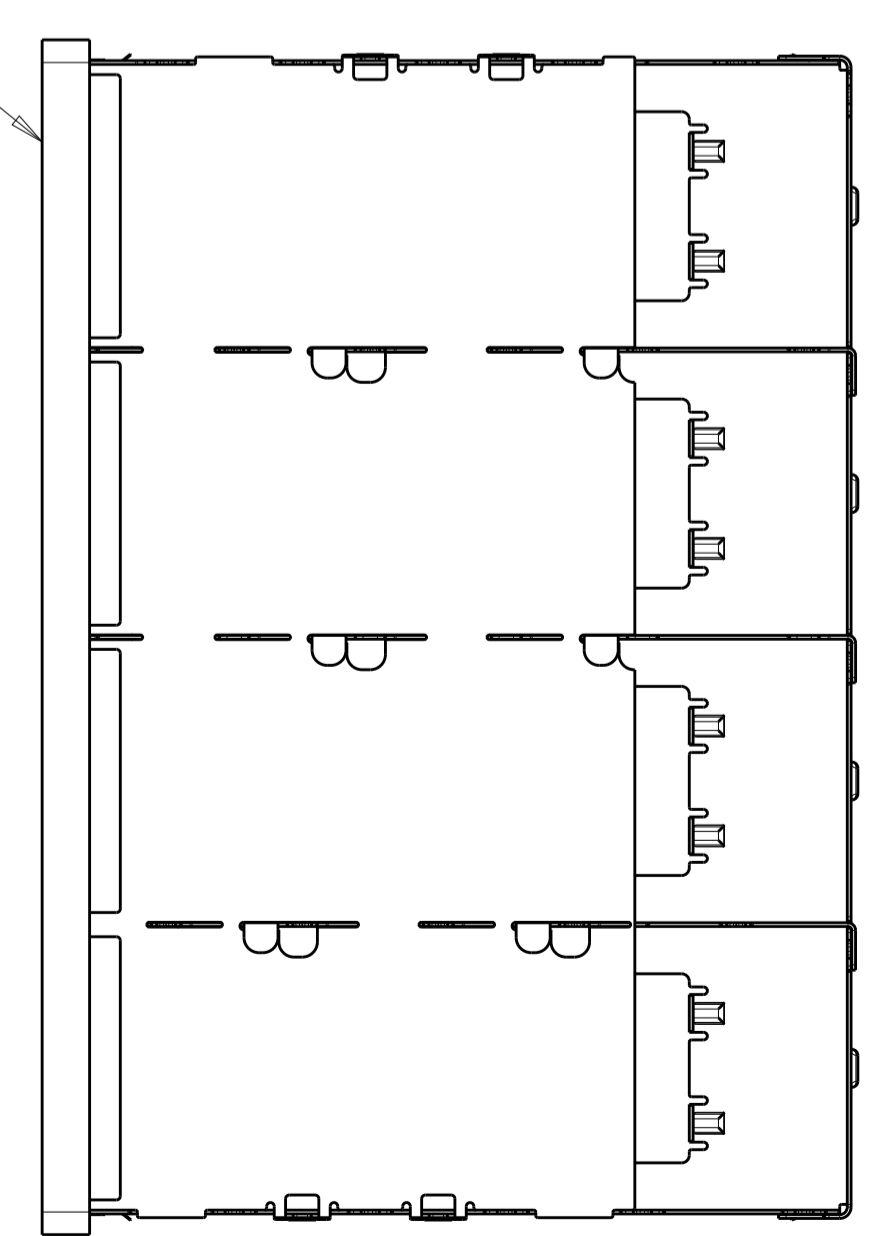


SEE DETAIL S



DETAIL S SCALE 20:1

FRONT FLANGE



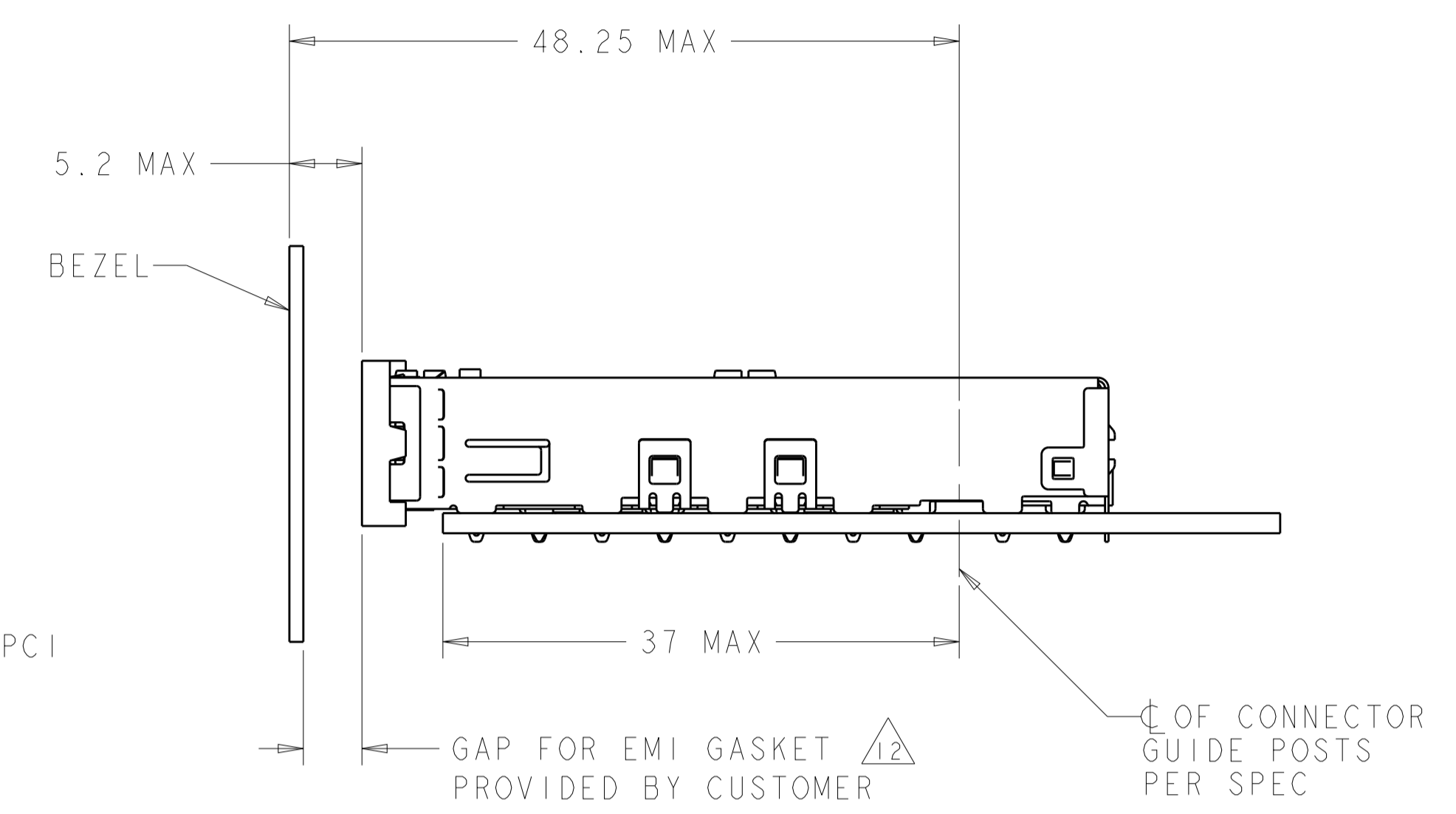
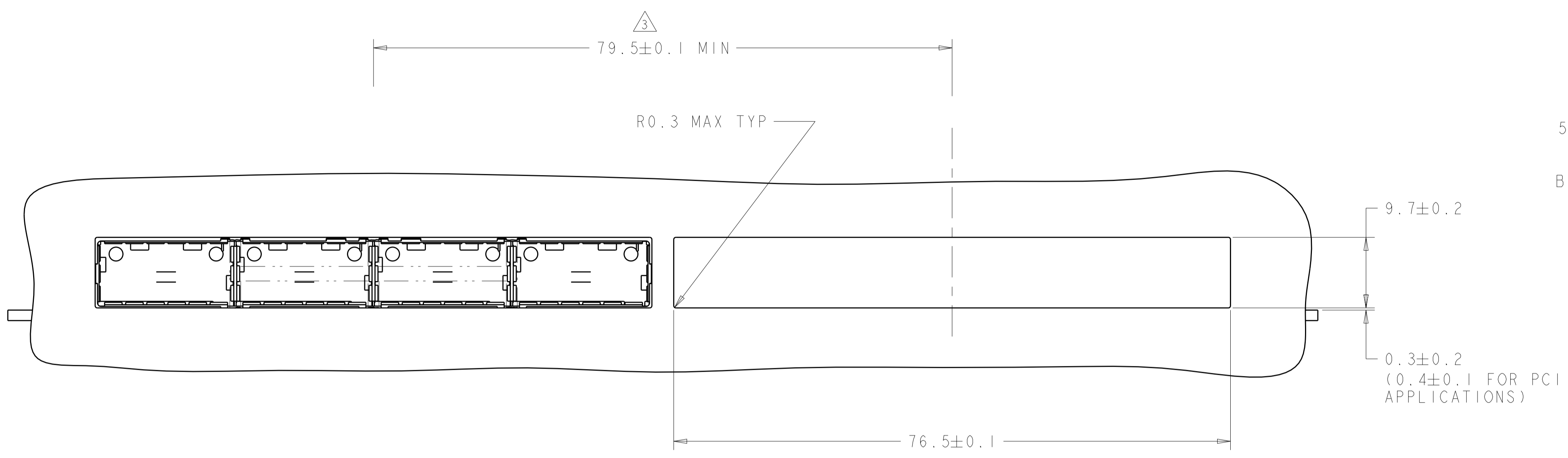
	13.03	2007667-5
	11.83	2007667-3
	13.03	2007667-1
DIM A		PART NUMBER

OBSOLETE

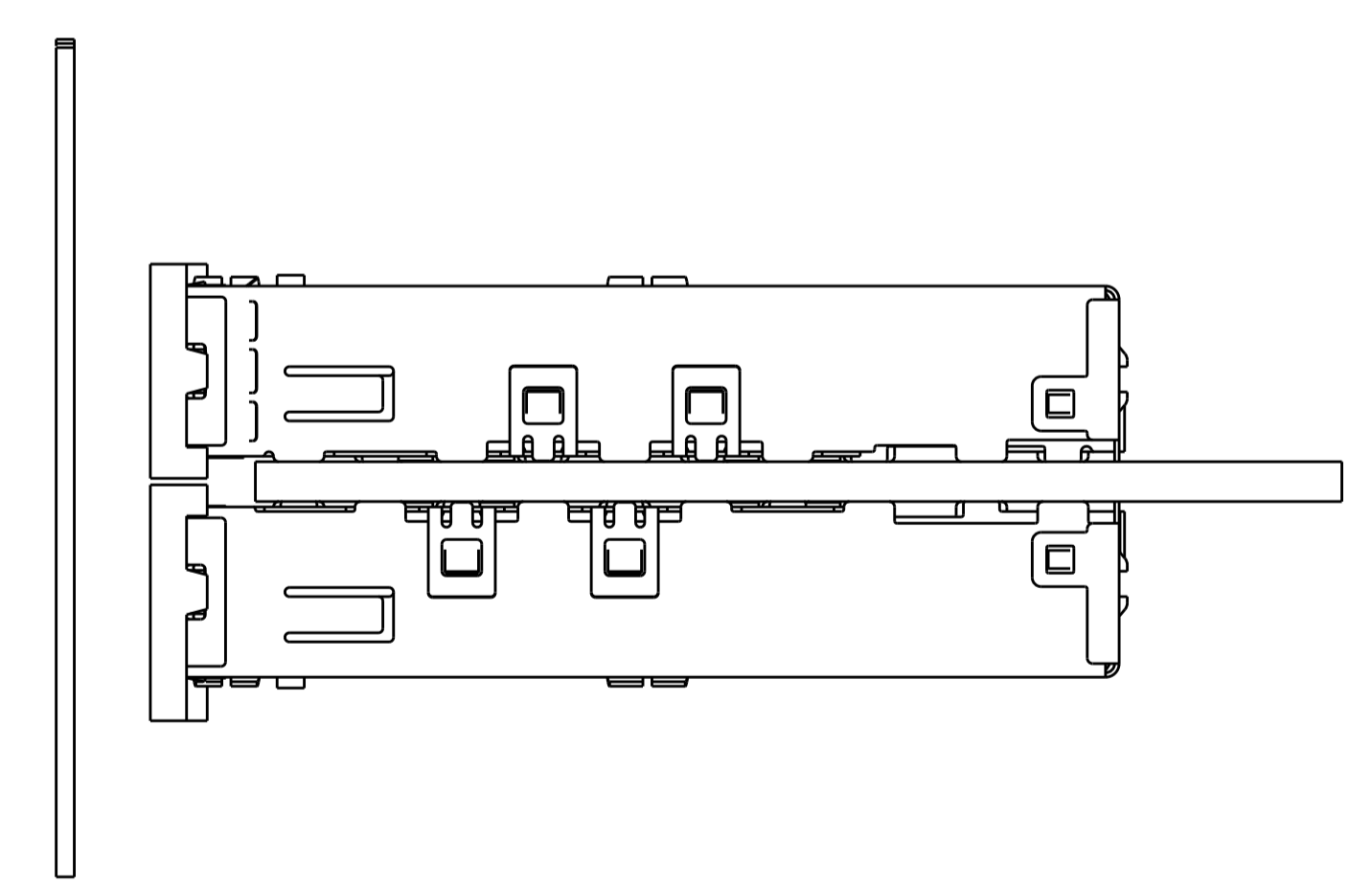
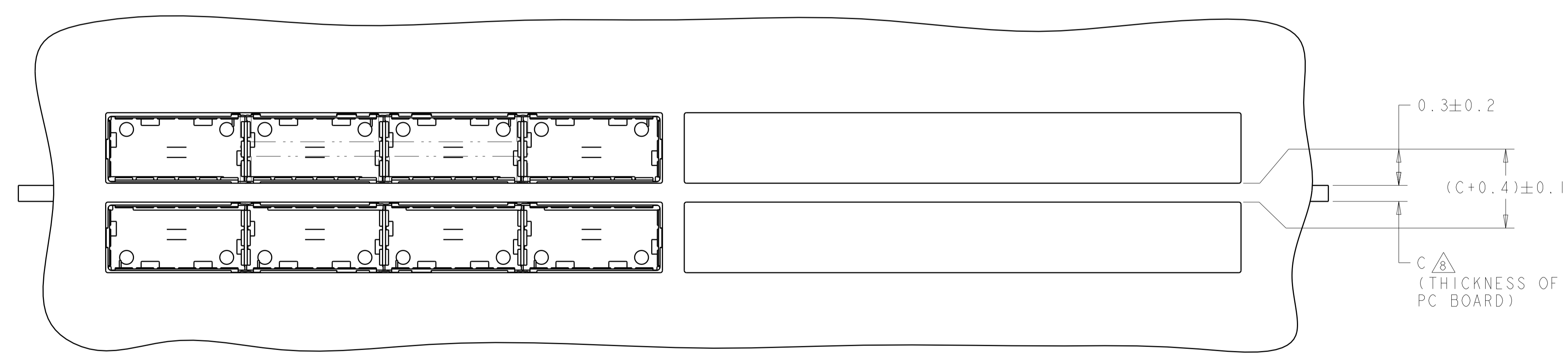
THIS DRAWING IS A CONTROLLED DOCUMENT.		DWN C. VALENTINE 05JUN2008	TE Connectivity
DIMENSIONS:		CHK E. BRIGHT 05JUN2008	
mm	0 PLC ±	APVD E. BRIGHT 05JUN2008	NAME 1X4 CAGE ASSEMBLY, BEHIND BEZEL, QSFP
	1 PLC ±0.1	PRODUCT SPEC	108-2286
	2 PLC ±0.1	APPLICATION SPEC	114-13218
	3 PLC ±0.013	SIZE	A100779
	4 PLC ±0.0001	WEIGHT	C=2007667
	ANGLES ±	Customer Drawing	SCALE 2:1 SHEET 1 OF 4 REV G
MATERIAL	FINISH		

LOC	DIST	REV	DATE	BY	APPV
GP	00				

REVISIONS				
REV	DATE	BY	APPV	DESCRIPTION
-	-	-	-	SEE SHEET 1



ONE SIDED CONFIGURATION
SCALE 5:2



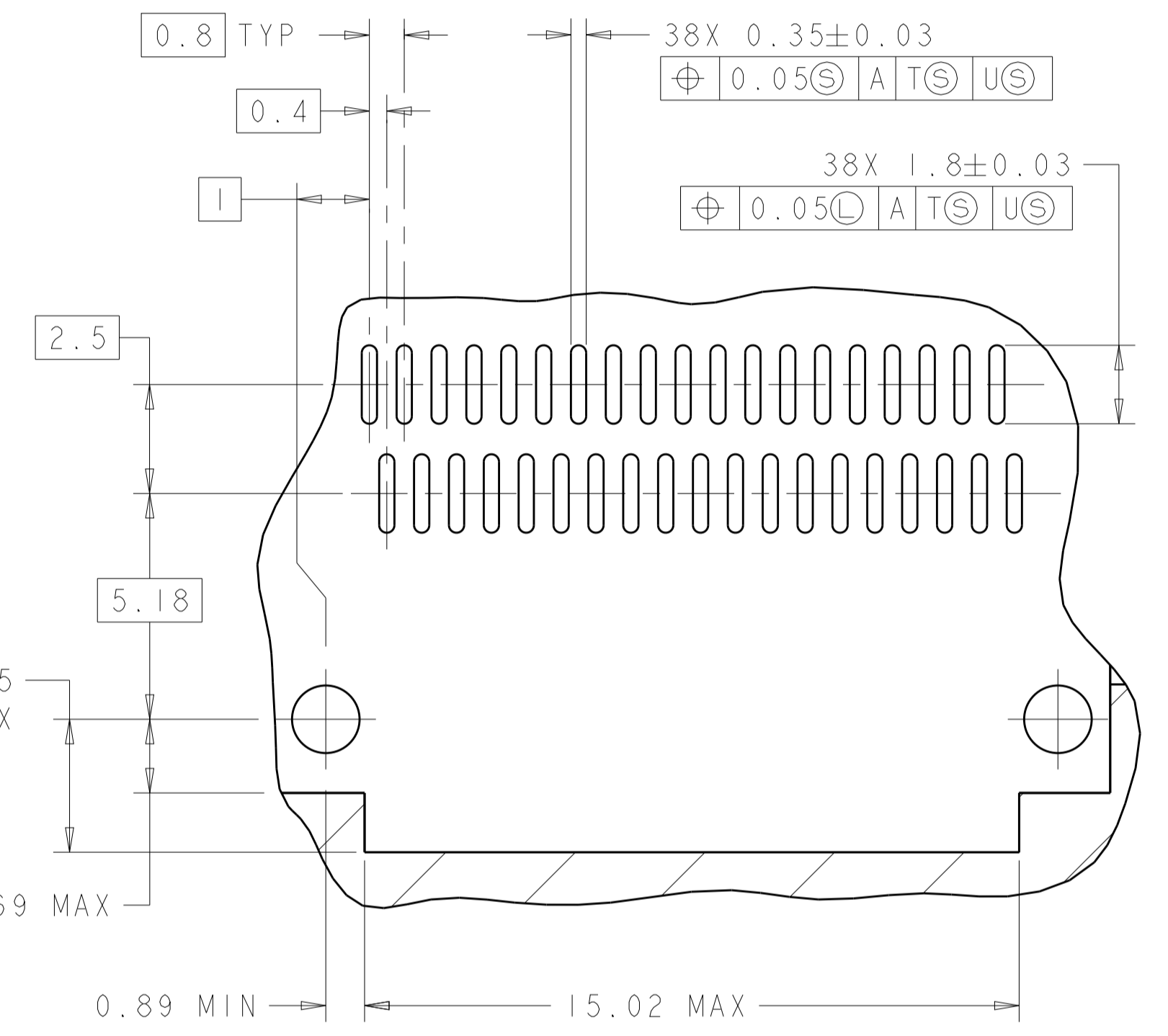
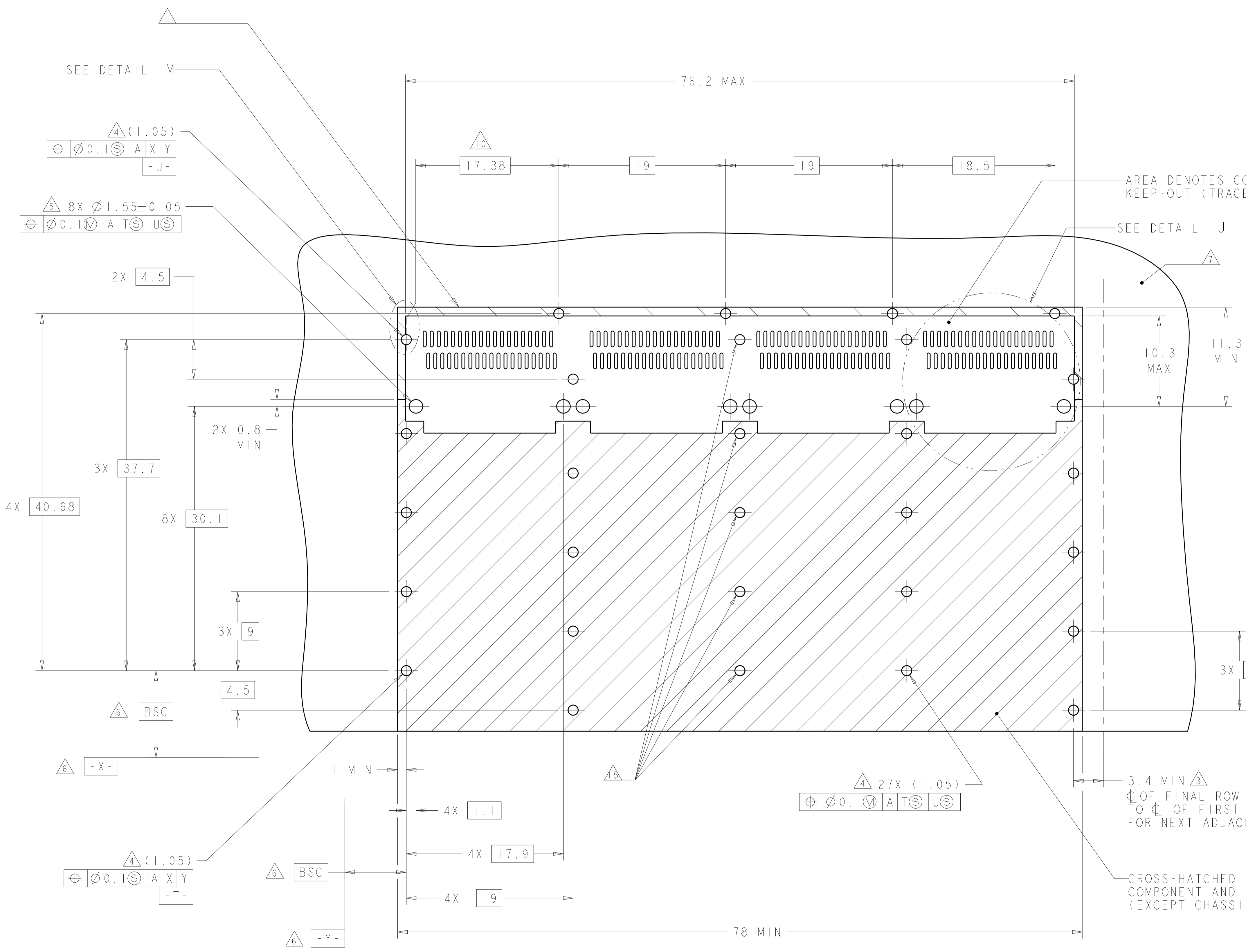
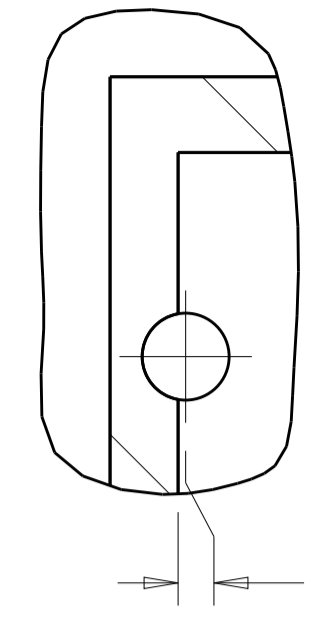
BELLY TO BELLY CONFIGURATION SIMILAR
TO ONE SIDED EXCEPT WHERE NOTED
SCALE 5:2

THIS PRODUCT HAS NOT COMPLETED VALIDATION/QUALIFICATION TESTING

THIS DRAWING IS A CONTROLLED DOCUMENT.		OWN: C. VALENTINE 05JUN2008	TE Connectivity
DIMENSIONS: mm		CHK: E. BRIGHT 05JUN2008	
TOLERANCES UNLESS OTHERWISE SPECIFIED:		APVD: F. BRIGHT 05JUN2008	NAME: 1X4 CAGE ASSEMBLY, BEHIND BEZEL, QSFP
0 PLC ±	1 PLC ±0.1	PRODUCT SPEC	SIZE: CAGE CODE DRAWING NO
2 PLC ±0.1	3 PLC ±0.013	108-2286	RESTRICTED TO
4 PLC ±0.0001	ANGLES ±	APPLICATION SPEC	A100779C=2007667
MATERIAL	FINISH	114-13218	SCALE 2:1 SHEET 2 OF 4 REV G
		WEIGHT	Customer Drawing

LOC	DIST	REV	DATE	BY	APPV
GP	00				

DETAIL M
 SCALE 10:1



DETAIL J
 4 PLACES
 SCALE 8:1

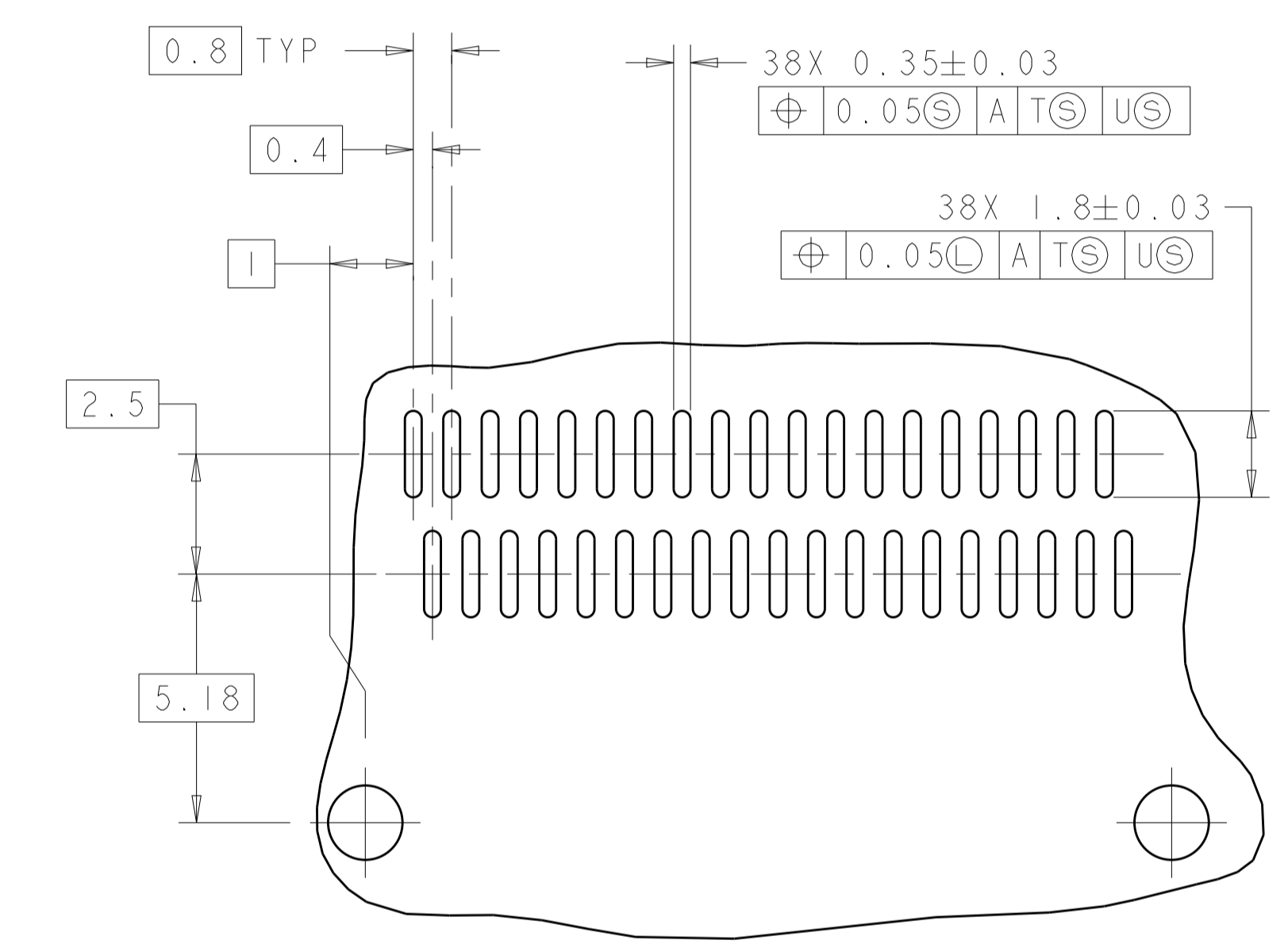
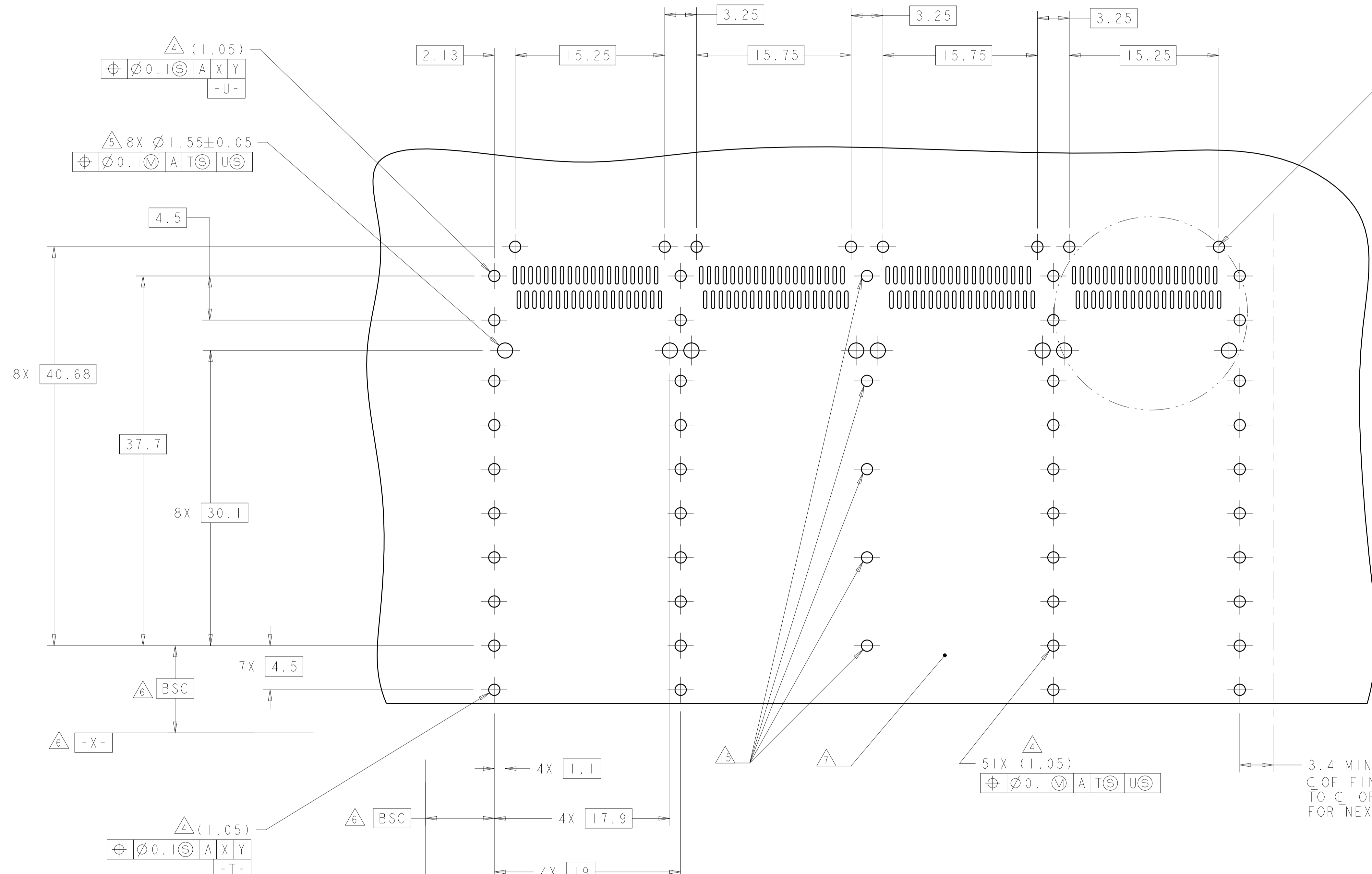
RECOMMENDED PC BOARD LAYOUT
 SINGLE SIDE MOUNT CONFIGURATION
 SCALE 4:1

THIS PRODUCT HAS NOT COMPLETED VALIDATION/QUALIFICATION TESTING

THIS DRAWING IS A CONTROLLED DOCUMENT.		DWN C. VALENTINE 05JUN2008	TE Connectivity NAME 1X4 CAGE ASSEMBLY, BEHIND BEZEL, QSPF
DIMENSIONS:		CHK E. BRIGHT 05JUN2008	
mm	TOLERANCES UNLESS OTHERWISE SPECIFIED:	APVD E. BRIGHT 05JUN2008	PRODUCT SPEC
Ø	0 PLC ±	PRODUCT SPEC	108-2286
	1 PLC ±0.1	APPLICATION SPEC	114-13218
	2 PLC ±0.1	WEIGHT	A100779C=2007667
	3 PLC ±0.013	Customer Drawing	SCALE 2:1 SHEET 3 OF 4 REV G
	4 PLC ±0.0001		
	ANGLES ±0.001		
MATERIAL	FINISH		

LOC	DIST	REV	DATE	BY	APPV
GP	00				

REVISIONS			
NO.	DESCRIPTION	DATE	BY
-	SEE SHEET 1	-	-



RECOMMENDED PC BOARD LAYOUT
 BELLY TO BELLY CONFIGURATION
 SEE SHEET 3 FOR COMPONENT AND TRACE KEEP-OUTS
 SCALE 4:1

3.4 MIN Δ
 C OF FINAL ROW OF HOLES
 TO C OF FIRST ROW OF HOLES
 FOR NEXT ADJACENT CAGE.

THIS PRODUCT HAS NOT COMPLETED VALIDATION/QUALIFICATION TESTING

THIS DRAWING IS A CONTROLLED DOCUMENT.		OWN C. VALENTINE 05JUN2008	 TE Connectivity												
DIMENSIONS: mm		CHK E. BRIGHT 05JUN2008													
TOLERANCES UNLESS OTHERWISE SPECIFIED:		APVD E. BRIGHT 05JUN2008	NAME 1X4 CAGE ASSEMBLY, BEHIND BEZEL, QSFP												
<table border="1"> <tr> <td>0 PLC</td> <td>±</td> </tr> <tr> <td>1 PLC</td> <td>±0.1</td> </tr> <tr> <td>2 PLC</td> <td>±0.1</td> </tr> <tr> <td>3 PLC</td> <td>±0.013</td> </tr> <tr> <td>4 PLC</td> <td>±0.0001</td> </tr> <tr> <td>ANGLES</td> <td>±</td> </tr> </table>		0 PLC	±	1 PLC	±0.1	2 PLC	±0.1	3 PLC	±0.013	4 PLC	±0.0001	ANGLES	±	PRODUCT SPEC 108-2286	SIZE 114-13218
0 PLC	±														
1 PLC	±0.1														
2 PLC	±0.1														
3 PLC	±0.013														
4 PLC	±0.0001														
ANGLES	±														
MATERIAL		APPLICATION SPEC 114-13218	RESTRICTED TO												
FINISH		WEIGHT	A100779C=2007667												
		Customer Drawing	SCALE 2:1 SHEET 4 OF 4 REV G												