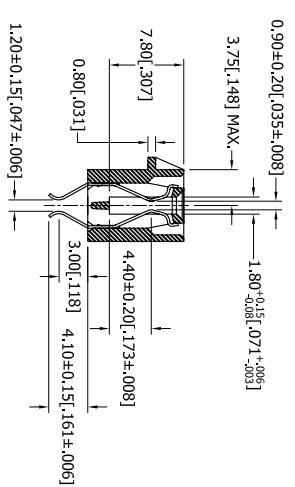
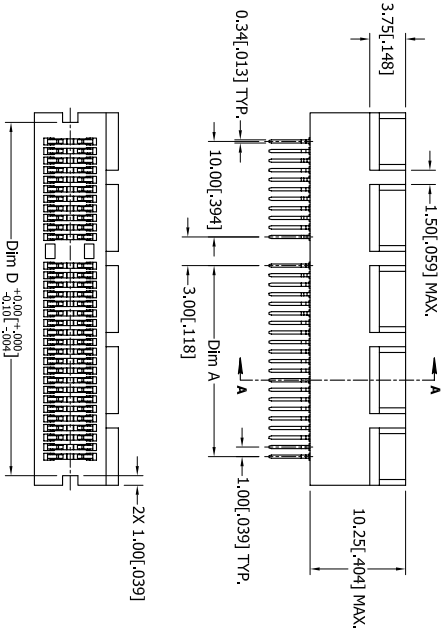
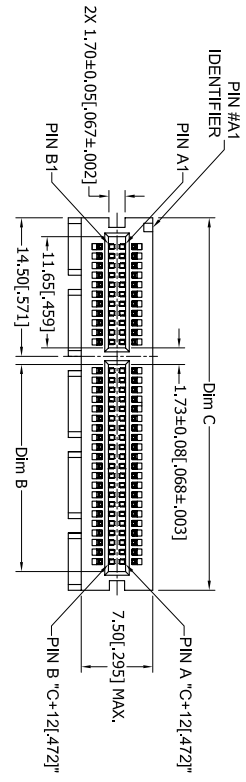


REV.		ECO. NO	DESCRIPTION	DATE	BY
A	1595		INITIAL RELEASE	11/31/2007	VJ
B	1707		UPDATE P/N CODING CHART, PLATING	05/30/08	ASK



PART NUMBER	POSITIONS/ CONTACTS	A		B		C		D		E		G		SPACES 'H'	PIN 'K'	
		MM	INCH	MM	INCH	MM	INCH	MM	INCH	MM	INCH	MM	INCH			MM
N E18DHRN-194	18/36	6	0.236	7.65	0.301	25	0.984	23	0.906	9.5	0.374	8.15	0.321	6	0.236	A1, B17
N E32DHRN-194	32/64	20	0.787	21.65	0.852	39	1.535	37	1.457	23.5	0.925	22.15	0.872	20	0.787	A1, B17, B31
N E49DHRN-194	49/98	37	1.457	38.65	1.522	56	2.204	54	2.126	40.5	1.594	39.15	1.541	37	1.457	A1, B17, B31, B48
N E82DHRN-194	82/164	70	2.756	71.65	2.821	89	3.504	87	3.425	73.5	2.893	72.15	2.841	70	2.756	A1, B17, B31, B48, B81

- NOTES:
- INSULATOR MATERIAL: HIGH TEMPERATURE THERMOPLASTIC.
 - CONTACT MATERIAL: SEE PART NUMBER CODING.
 - PLATING: SEE PART NUMBER CODING.
 - OPERATING TEMPERATURE: -10°C ~ 85°C.
 - PROCESSING TEMP: 260°C FOR 10 SECONDS MAX.
 - UL FLAMMABILITY RATING: 94V-0
 - VOLTAGE RATING: 50 VDC MINIMUM AT SEA LEVEL.
 - CURRENT RATING: 1.1 AMP PER CONTACT.
 - VOLTAGE DROP: 44 MILLI VOLT AT RATED CURRENT.
 - INSULATION RESISTANCE: 1000 MEGA OHMS.
 - CONNECTOR IDENTIFICATION: THE PART SHALL BE MARKED WITH A PART NUMBER AND BARCODE.
 - BOARD THICKNESS ACCOMMODATED: 1.57±0.20±.062±.0081.
 - BOARD INSERTION FORCE: 1.15N (117.3g) MAX PER CONTACT PAIR WHEN USING A 1.57±.062] TEST BLADE.
 - BOARD WITHDRAWAL FORCE: 0.15N (15.31g) MINIMUM PER CONTACT PAIR USING 1.57±.062] PCB
 - MODIFICATION: SEE PART NUMBER CODING.

- NO THE BAR PERMITTED FROM CARD EDGE TO LEADING EDGE OF PAD FOR PINS 'A1' AND 'K'.
- CHAMFER EDGES MUST BE FREE OF CUTTING BURR.

UNLESS OTHERWISE SPECIFIED:
DIMENSIONS ARE IN INCHES(MM)

ROHS COMPLIANT

SULLINS
CONNECTOR SOLUTIONS

DATE: 11/31/07 V. JARA

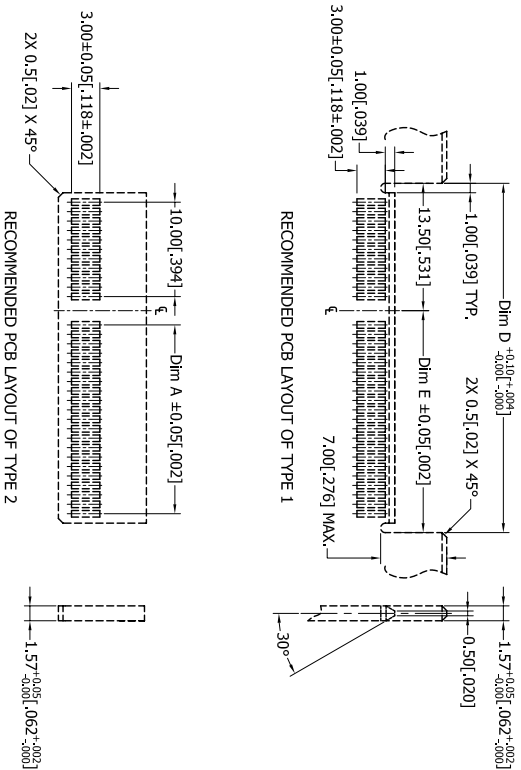
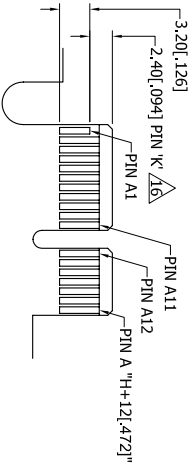
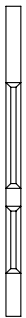
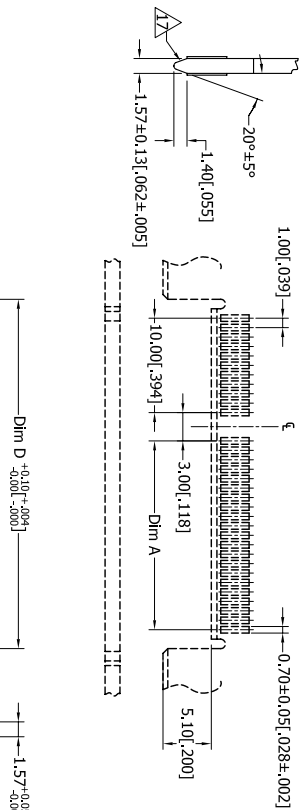
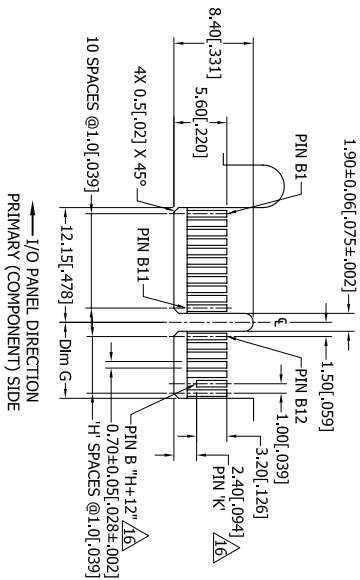
DESCRIPTION: STRADDLE MOUNT, NO PEGS

PART NUMBER: N_E_DHRN - 194

SIZE DWG. NO. 11044

SCALE: 1:1

SHEET 1 OF 2



PART NUMBER CODING

N _ E _ _ DHRN - T94 _

PLATING

ALL PLATINGS ARE LEAD FREE AND HAVE .000050" NICKEL UNDERPLATE ON CONTACT SURFACE AND TERMINATION

CONTACT SURFACE
 B = .000010" GOLD
 C = .000030" GOLD
 W = GOLD FLASH

TERMINATION
 .000100" PURE TIN, MATTE
 .000100" PURE TIN, MATTE
 .000100" PURE TIN, MATTE

POSITIONS

- 18 (X1)
- 32 (X4)
- 49 (X8)
- 82 (X16)

COLOR

- 1=BLACK
- 2=BLUE
- 3=GREEN
- 4=PURPLE



ROHS COMPLIANT

UNLESS OTHERWISE SPECIFIED:
 DIMENSIONS ARE IN INCHES(MM)
 TOLERANCES:
 .XX±.XX [.XX]
 .XXX±.XXX [.XXX]
 .XXXX±.XXXX [.XXXX]
 .XXXX±.005 [.1270]
 .XXXX±.002 [.0508]
 .XXXX±.001 [.0254]
 SURFACE FINISH:
 REMOVE ALL BURRS AND SHARP EDGES .010 MAX
 INTERPRET DIMENSIONS AND GEOMETRIC TOLERANCING PER: ANSI Y14.5M-1994

DRAWN	DATE	NAME
11/21/07	VJAB	

THE INFORMATION HEREIN CONVEYS TO BE APPROVED, USED OR REPRODUCED IN ANY MANNER EXCEPT AS SPECIFICALLY AUTHORIZED BY THE OFFICE OF SULLINS ELECTRONICS.

DESCRIPTION: STRADDLE MOUNT, NO PEGS	
PART NUMBER: N _ E _ _ DHRN - T94 _	
SIZE DWG. NO.	11044
SCALE: 1:1	REV B

8 7 6 5 4 3 2 1

A B C D E F

8 7 6 5 4 3 2 1

A B C D E F

2:COMPONENTS\KVCOM11044_N_E_DHRN-T94.dwg PRINT: 05/20/2008

SHEET 2 OF 2