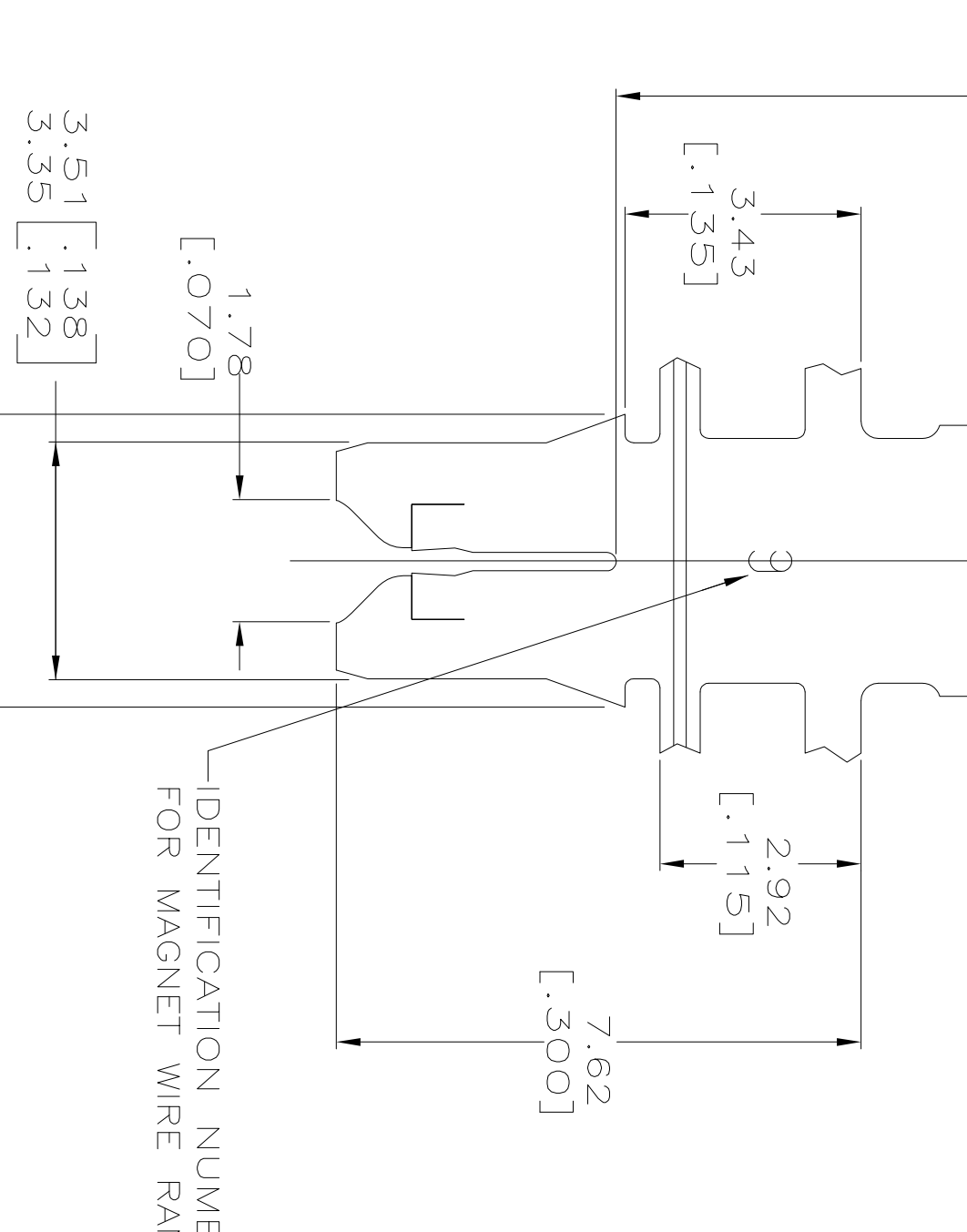
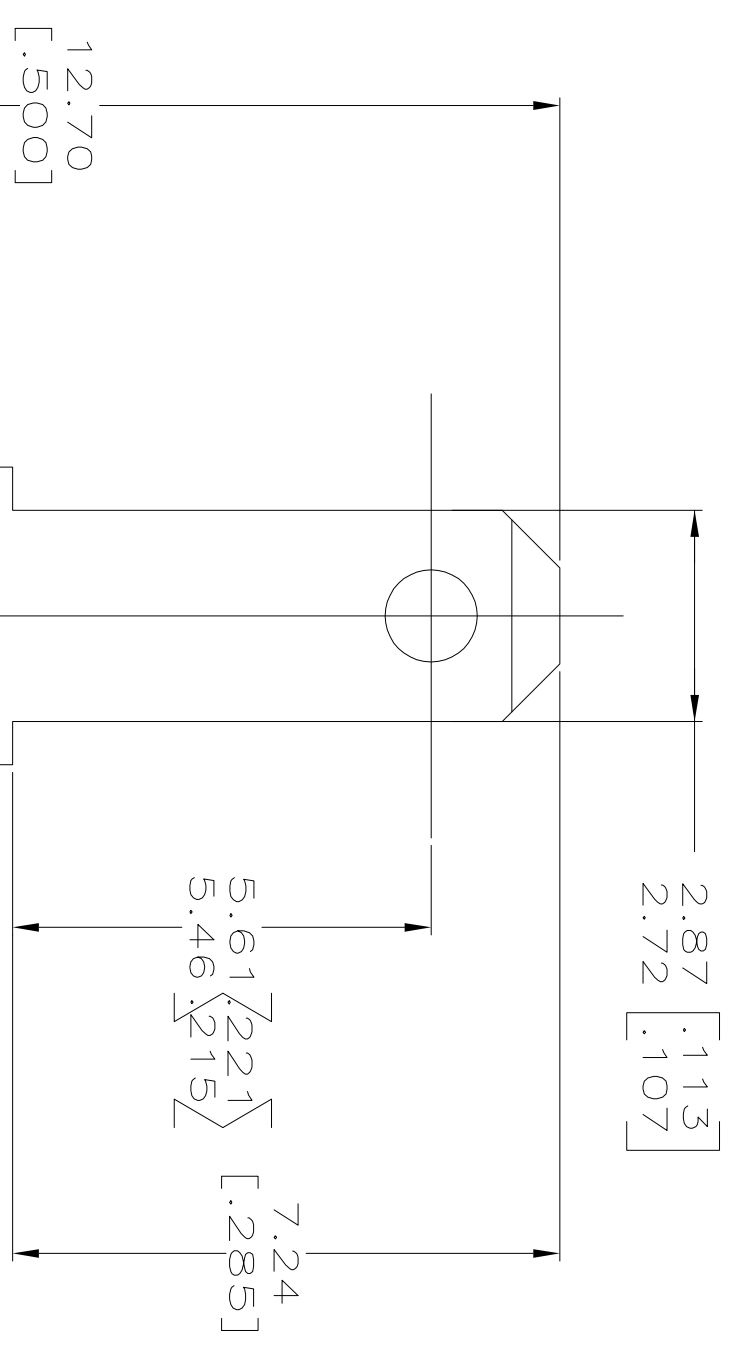
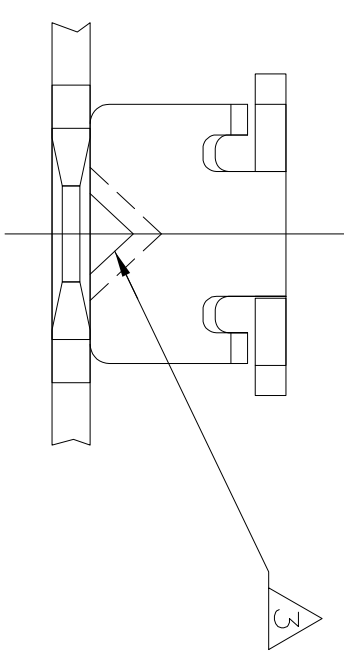
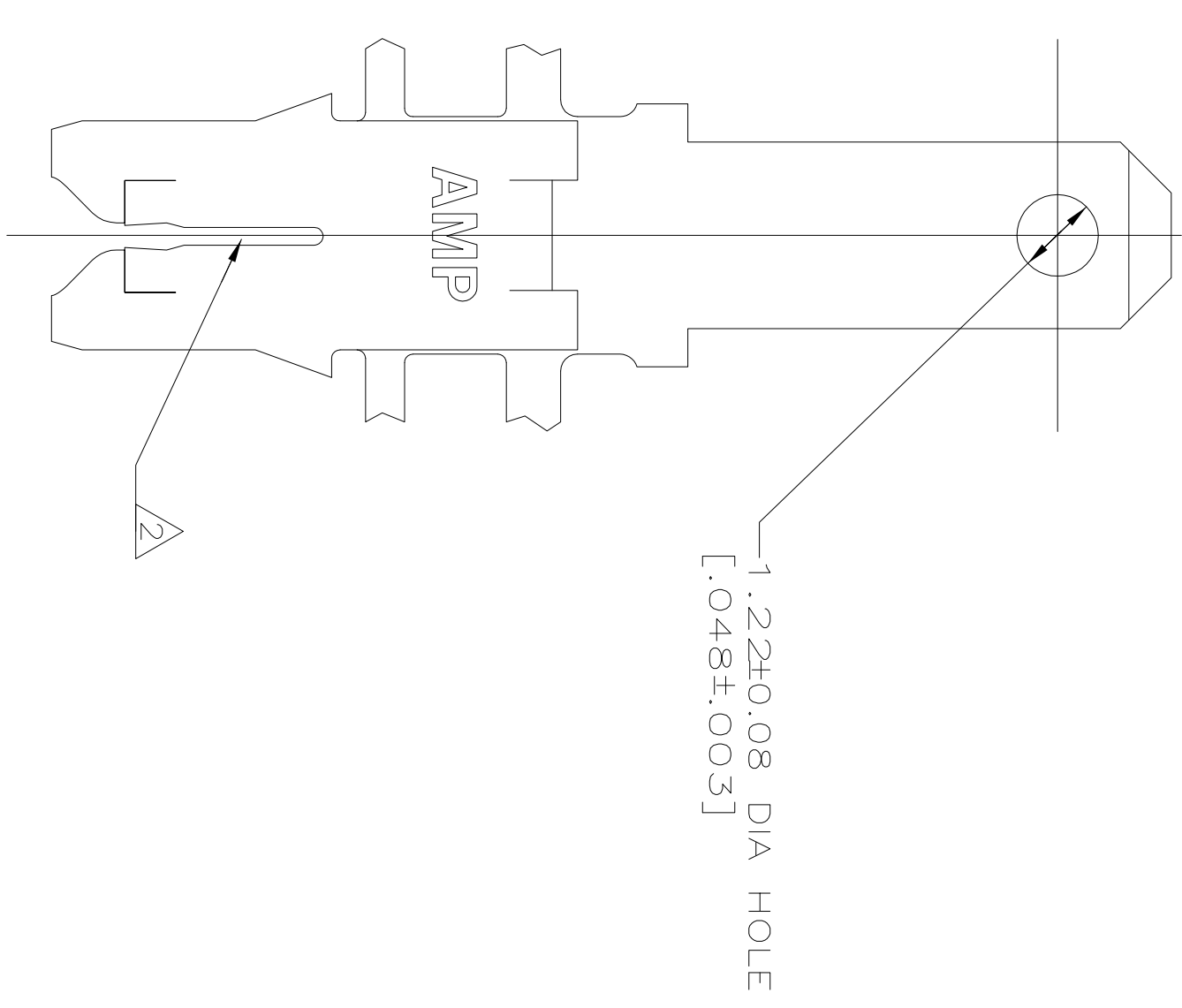
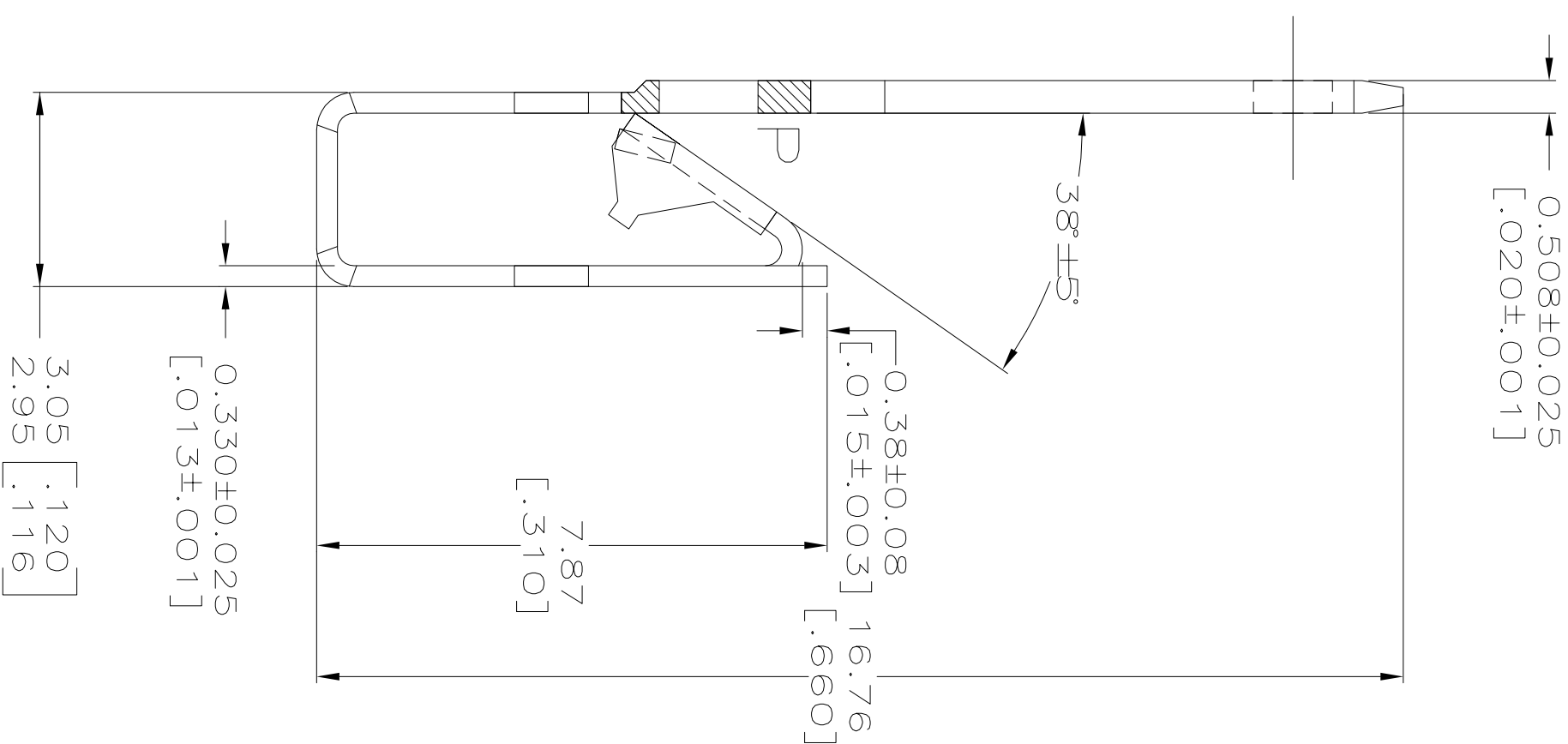


LOC	DIST	ZONE	LTR	DESCRIPTION	DATE	APPD
AF	50	P	J1	REVISE PER ECR-12-022060	28DEC12	CX/LL

- CONTINUOUS STRIP ON REELS WITH TERMINALS LOCATED ON 5.59±0.08 [.220±.003] CENTERS. SLOTS ACCEPTS EITHER A SINGLE OR DOUBLE MAGNET WIRE OF THE SAME SIZE AND TYPE COPPER RANGE: 0.32-0.51mm [#28-#24] AWG
- POKE-IN ACCEPTS A 0.5-0.8mm<sup>2</sup> [#20-#18] AWG SOLID OR FUSED STRANDED LEAD WIRE.
- AFTER INSERTION INTO PLASTIC HOLDER TAB PORTION MUST BE BENT OVER 45° TO 90° OR POTTED-IN TO PREVENT PULL-OUT WHEN MATING RECEPTACLE IS DISCONNECTED.
- 



IDENTIFICATION NUMBER 9 FOR MAGNET WIRE RANGE



OBSOLETE -63062-1- PART NO

DO NOT SCALE PRINT.  
 UNLESS SPECIFIED DIMENSIONS IN mm [INCHES] TOLERANCES ON :  
 2. PLC DEC ± 0.25 [.010]  
 3. PLC DEC ± \_ \_  
 ANGLES ± \_ \_  
 MATERIAL  
 4M PRE-MILLED BRASS

DR 9/MAR/95 R.GRZYBOWSKI  
 CHK 16/MAR/95 M.S.FEHER  
 APPD 16/MAR/95 NELSON E. NEFF  
 APPD 16/MAR/95 TERRY L. SHUTTER  
 PRODUCT SPEC 108-2012  
 APPLICATION SPEC 114-2046  
 WEIGHT \_

**AMP** AMP Incorporated Harrisburg, PA 17105-3608  
 NAME TERMINAL, TAB, POKE-IN / 2.79 [.110] FASTON,™ COMBINATION, MAG-MATE™  
 SIZE CAGE CODE DRAWING NO  
 00779 63062  
 SCALE 10:1 SHEET 1 OF 1

THIS DRAWING IS A CONTROLLED DOCUMENT FOR AMP INCORPORATED. IT IS SUBJECT TO CHANGE AND THE CONTROLLING ENGINEERING ORGANIZATION SHOULD BE CONTACTED FOR THE LATEST REVISION.