

MATERIALS

BODY:
Phenolic, UL94 V-0

ACTUATOR:
Nickel Plated Brass

BUSHING:
Nickel Plated Brass

HOUSING:
Nickel Plated Steel

HARDWARE:
Nickel Plated Brass

SPACER PLATE:
Epoxy Board

SPRING:
Steel

ACTUATOR PLUNGER:
Phenolic, UL94 V-0

MOBILE CONTACT BAR:
Silver Plated Copper

CENTER PIVOT:
Silver Plated Copper

CONTACTS:
Silver Alloy Clad Copper

TERMINALS:
Brass
Steel

SPECIFICATIONS

FUNCTION:
1P1T OFF-ON

RATINGS:
ANSI/UL1054 and CAN/CSA C22.2 No.55 (E194579):
20A 125VAC [cUrns]
15A 277VAC [cUrns]
2HP 125/277VAC [cUrns]

CONTACT RESISTANCE:
Initial: 10mΩ Max.

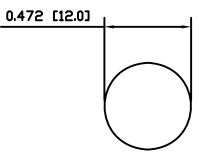
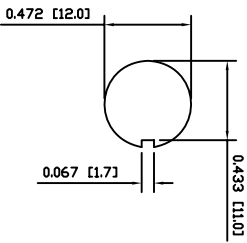
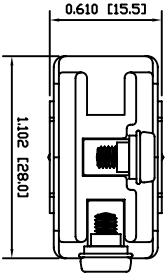
INSULATION RESISTANCE:
10MΩ Min.

DIELECTRIC STRENGTH:
1,500VAC for 1 Minute

OPERATING LIFE:
6,000 Cycles [cUrns]

TEMPERATURE:
Operating: 0°C to 85°C [cUrns]

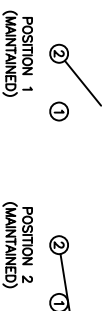
APPROVALS:
RoHS
COMPLIANT



SUGGESTED PANEL CUTOUT

ALTERNATE PANEL CUTOUT

SCHEMATIC



ACTUATOR BODY	B	10/06/10	CAB
MATERIALS	B	10/06/10	CAB
SPECIFICATIONS	B	10/06/09	CAB
REFERENCE	REV.	DATE	BY

THE INFORMATION CONTAINED IN THIS DOCUMENT IS PROPRIETARY TO E-SWITCH AND IS NOT TO BE COPIED OR TRANSMITTED

CONNECTED PANEL CUTOUT, SPECIFICATIONS, AND MATERIALS	B	19133	10/06/10	CAB
INITIAL RELEASE DESCRIPTION	A	1909016	09/06/20	CAB
	REV.	PCB	DATE	DRAWN BY

DIMENSIONS	INCHES [MILLIMETERS]
GENERAL TOLERANCES	±0.008 [±0.2] / ±1'
SCALE	DRAWING NOT TO SCALE
PROJECTION	

E-SWITCH

LAMB INDUSTRIES

ST16MD00

DRAWING NUMBER 34-ST16MD00 DATE JUNE 10, 2010 REVISION B