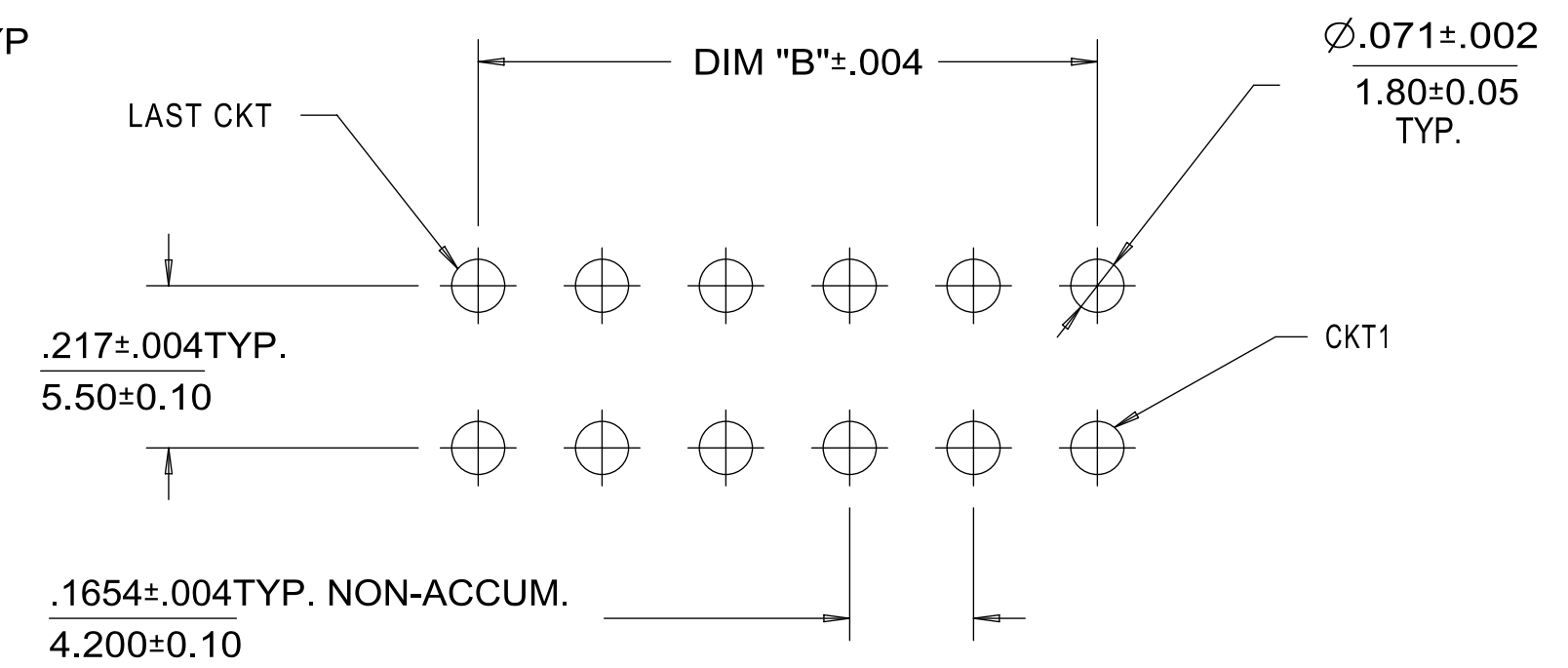
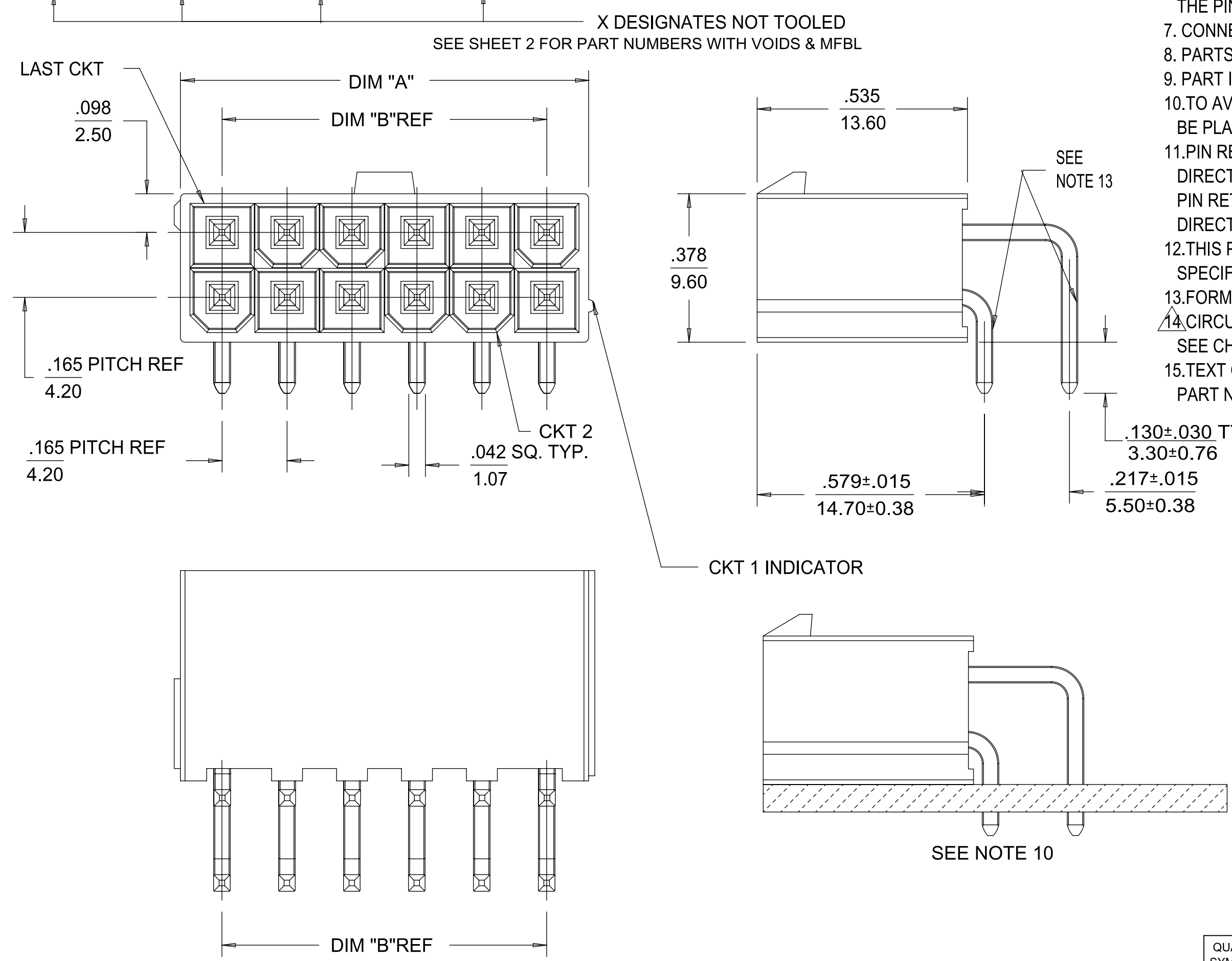


		COLOR = BLACK			COLOR = NATURAL	
		TIN PLATING		GOLD PLATING	TIN PLATING	
CKT SIZE	TRAY PACK MATERIAL NUMBER	TAPE & REEL MATERIAL NUMBER	TRAY PACK MATERIAL NUMBER	TRAY PACK MATERIAL NUMBER	DIM "A"	DIM "B"
4	46991-1004	46991-4004	X 46991-2004		.38/9.6	.165/4.20
6	46991-1006	X 46991-4006	X 46991-2006		.54/13.8	.331/8.40
8	46991-1008	X 46991-4008	46991-2008		.71/18.0	.496/12.60
10	46991-1010	46991-4010	X 46991-2010	X 46991-1110	.87/22.2	.661/16.80
12	46991-1012	X 46991-4012	46991-2012		1.04/26.4	.827/21.00
14	X 46991-1014	X 46991-4014	X 46991-2014		1.21/30.6	.992/25.20
16	X 46991-1016	X 46991-4016	X 46991-2016		1.37/34.8	1.160/29.40
18	X 46991-1018	X 46991-4018	X 46991-2018		1.54/39.0	1.323/33.60
20	X 46991-1020	X 46991-4020	X 46991-2020		1.70/43.2	1.488/37.80
22	X 46991-1022	X 46991-4022	X 46991-2022		1.87/47.4	1.654/42.00
24	46991-1024	X 46991-4024	X 46991-2024		2.03/51.6	1.819/46.20

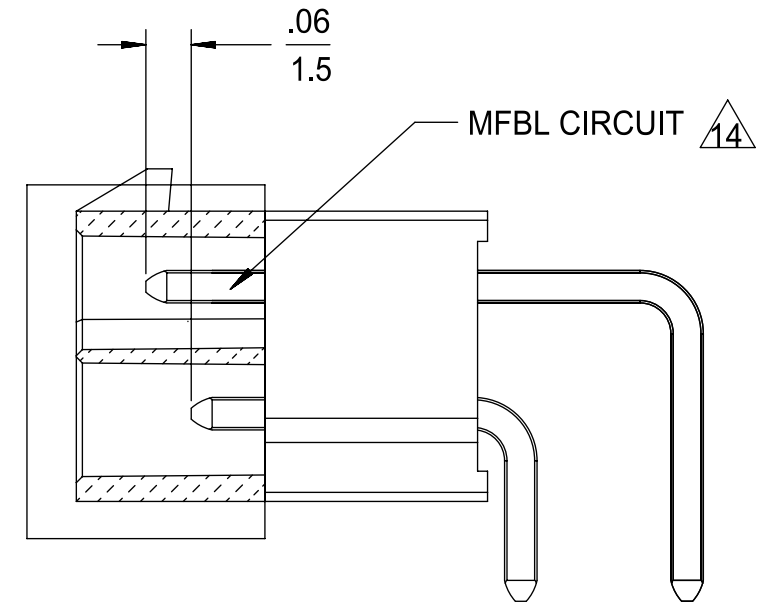
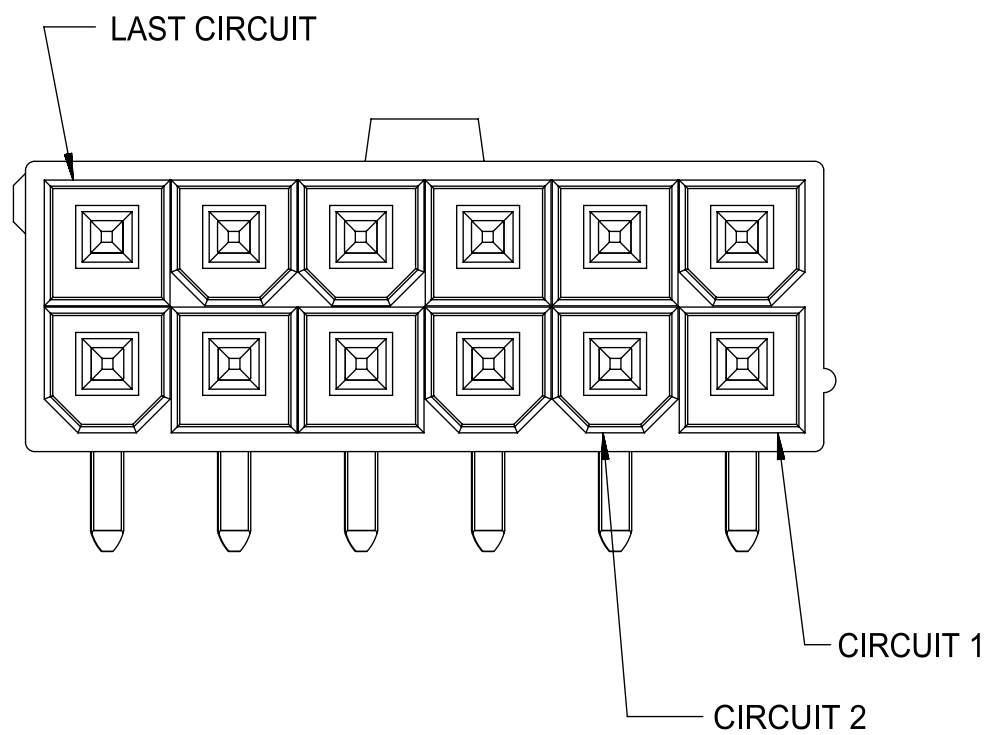
- NOTES:
- MATERIAL:
HOUSING - LIQUID CRYSTAL POLYMER (LCP), COLOR: SEE CHART.
TERMINAL - BRASS
 - TERMINAL PLATING: TIN = .000100/0.00254 MATTE TIN OVER
.000050/0.00127 NICKEL OVERALL
GOLD= .000030/0.00076 MIN. SELECT GOLD OVER
.000100/0.00254 MIN. SELECT MATTE TIN OVER
.000050/0.00127 MIN NICKEL OVERALL
 - PRODUCT SPECIFICATION: PS-46207-001.
 - PACKAGING SPECIFICATION: TRAY PACKED PER PK-5569-003 OR
TAPE AND REEL PACKAGED PER PK-46991-001.
 - PART MATES WITH MINIFIT JR RECEPTACLE SERIES 5557
 - DISCOLORIZATION IN THE BANDOLIER CARRIER AREA OF THE PIN IS
INHERENT TO THE PLATING PROCESS AND IS DUE TO THE MASKING EFFECT
OF THE CARRIER. THIS DISCOLORIZATION IS A NON-FUNCTIONAL AREA OF
THE PIN AND WILL NOT AFFECT THE PERFORMANCE OF THE HEADER ASSEMBLY.
 - CONNECTORS ARE NOT TO BE MATED OR UNMATED WHILE CIRCUITS ARE LIVE.
 - PARTS ARE NOT DESIGNED FOR CURRENT SHARING.
 - PART IS INTENDED FOR PIN IN PASTE REFLOW SOLDER ONLY.
 - TO AVOID INTERFERENCE BETWEEN THE RECEPTACLE AND PCB. HEADER MUST
BE PLACED AT THE EDGE OF PCB AS SHOWN.
 - PIN RETENTION IN HOUSING IS 2.2 LBS/1 KG MIN. BOTH
DIRECTIONS FOR TIN PLATING.
PIN RETENTION IN HOUSING IS 1.0 LBS/0.45 KG MIN. BOTH
DIRECTIONS FOR GOLD PLATING.
 - THIS PART CONFORMS TO CLASS B REQUIREMENTS OF COSMETIC
SPECIFICATION PS-45499-002.
 - FORMING MARKS ON PINS ARE ACCEPTABLE.
 - CIRCUITS SHOWN PROVIDE THE MATE-FIRST/BREAK-LAST FEATURE.
SEE CHART ON SHEET 2 FOR SPECIFIC CIRCUIT LOCATIONS.
 - TEXT ON PART IS FOR REFERENCE ONLY. TEXT AND TEXT LOCATION MAY VARY DEPENDING ON
PART NUMBER AND/OR TOOL.



QUALITY SYMBOLS	THIS DRAWING CONTAINS INFORMATION THAT IS PROPRIETARY TO MOLEX ELECTRONIC TECHNOLOGIES, LLC AND SHOULD NOT BE USED WITHOUT WRITTEN PERMISSION				
▽ = 0	ADD NATURAL PINS EC NO: 106232 DRWN: CSLAFTER CHKD: REV / APPR: FSMITH	GENERAL TOLERANCES (UNLESS SPECIFIED)		DIMENSION UNITS	SCALE
▽ = 0		MM	INCH	IN/MM	4:1
▽ = 0		4 PLACES ±	±	DRWN BY	DATE
▽ = 0		3 PLACES ±	± 0.01	JKLOSTERMEIE	2008/12/19
▽ = 0		2 PLACES ±	± 0.25 ± 0.015	CHK'D BY	DATE
▽ = 0		1 PLACES ±	± 0.38 ±	JBELL	2008/12/10
▽ = 0	0 PLACES ±	±	APPR BY	DATE	
▽ = 0		ANGULAR TOL + 0.5	FSMITH	2008/12/15	
▽ = 0		DRAFT WHERE APPLICABLE MUST REMAIN WITHIN DIMENSIONS	DRAWING SIZE	THIRD ANGLE PROJECTION	
▽ = 0			C		
RELEASE STATUS	RELEASE DATE	SERIES		MATERIAL NUMBER	CUSTOMER
12	11	46991		SEE CHART	GENERAL MARKET
		DOCUMENT NUMBER	DOC TYPE	DOC PART	SHEET NUMBER
		SD-46991-001	PSD	000	1 OF 2

MATERIAL NUMBER	NO OF CKT	PKG	PLATING SEE NOTE #2	PIN IDENTIFICATION CODE / CIRCUIT LOCATION (SEE CHART BELOW)																							
				CKT 1	CKT 2	CKT 3	CKT 4	CKT 5	CKT 6	CKT 7	CKT 8	CKT 9	CKT 10	CKT 11	CKT 12	CKT 13	CKT 14	CKT 15	CKT 16	CKT 17	CKT 18	CKT 19	CKT 20	CKT 21	CKT 22	CKT 23	CKT 24
46991-5001	06	TRAY	TIN	2	V	2	2	V	2																		
46991-5002	04	TRAY	TIN	1	2	1	1																				

PIN ID	MATING CONFIGURATION
1	MATE FIRST/BREAK LAST (LONGER)
2	STANDARD MATING



CKT SIZE	DIM "A"	DIM "B"
4	.38/9.6	.165/4.20
6	.54/13.8	.331/8.40
8	.71/18.0	.496/12.60
10	.87/22.2	.661/16.80
12	1.04/26.4	.827/21.00
14	1.21/30.6	.992/25.20
16	1.37/34.8	1.160/29.40
18	1.54/39.0	1.323/33.60
20	1.70/43.2	1.488/37.80
22	1.87/47.4	1.654/42.00
24	2.03/51.6	1.819/46.20

THIS DRAWING CONTAINS INFORMATION THAT IS PROPRIETARY TO MOLEX ELECTRONIC TECHNOLOGIES, LLC AND SHOULD NOT BE USED WITHOUT WRITTEN PERMISSION

QUALITY SYMBOLS 	ADD NATURAL PINS EC NO: 106232 DRWN: CSLAFTER CHK'D: REV / APPR: FSMITH	2016/06/28 2016/07/07	GENERAL TOLERANCES (UNLESS SPECIFIED)		DIMENSION UNITS IN/MM		SCALE 4:1			
			4 PLACES ± ± 3 PLACES ± ± 0.01 2 PLACES ± 0.25 ± 0.015 1 PLACES ± 0.38 ± 0 PLACES ± ±	DRWN BY JKLOSTERMEIE	DATE 2008/12/19	CHK'D BY JBELL	DATE 2008/12/10		APPR BY FSMITH	DATE 2008/12/15
ANGULAR TOL ± 0.5		DRAWING SIZE C	THIRD ANGLE PROJECTION				SERIES 46991		MATERIAL NUMBER SEE CHART	CUSTOMER GENERAL MARKET
DRAFT WHERE APPLICABLE MUST REMAIN WITHIN DIMENSIONS		DRAFT WHERE APPLICABLE MUST REMAIN WITHIN DIMENSIONS		DOCUMENT NUMBER SD-46991-001		DOC TYPE PSD	DOC PART 000		SHEET NUMBER 2 OF 2	