

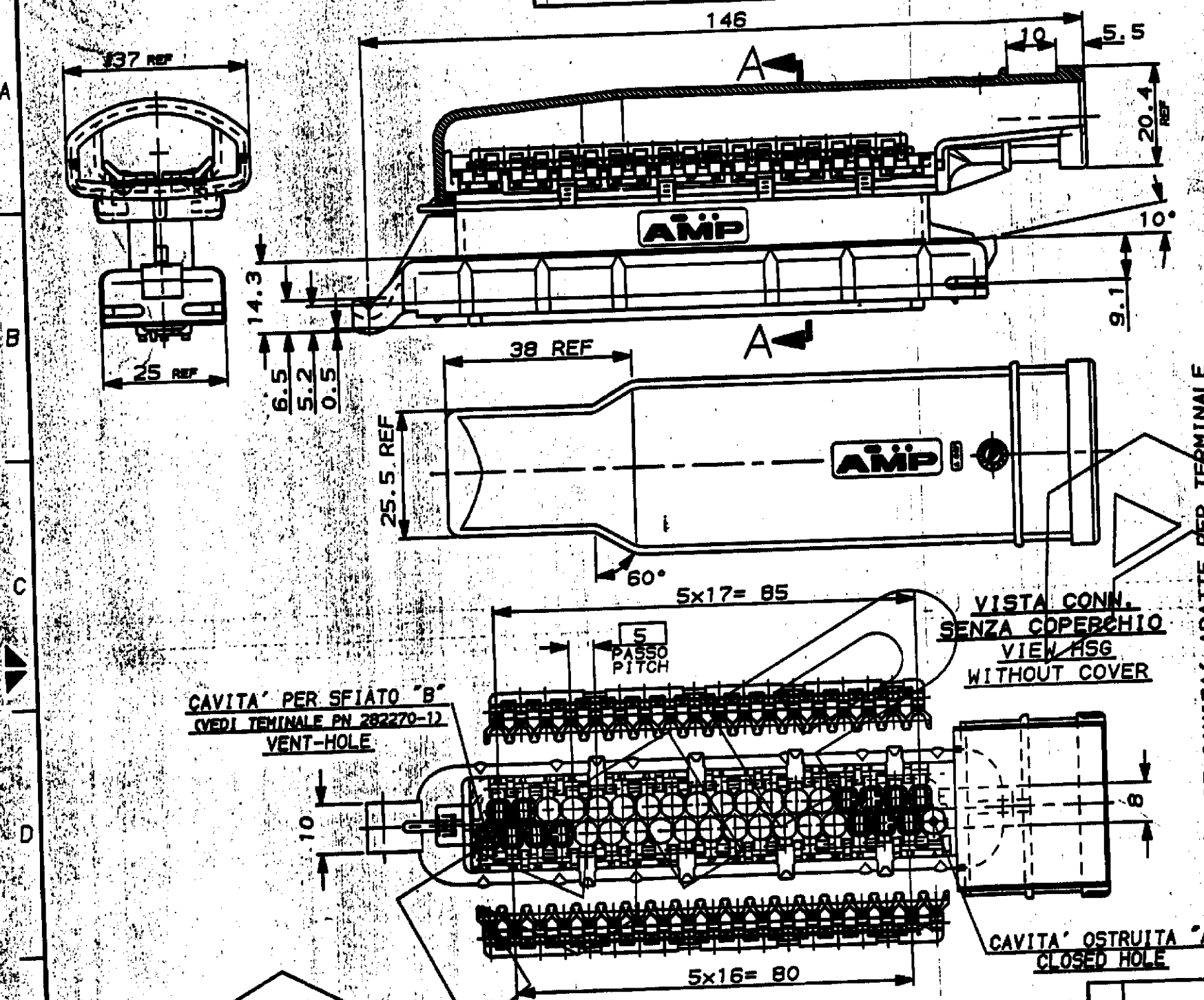
STANDARD VERSION

SCALA NON IMPERATIVA
(DO NOT SCALE)
DIMENSIONI IN mm
(DIMENSIONS IN mm)

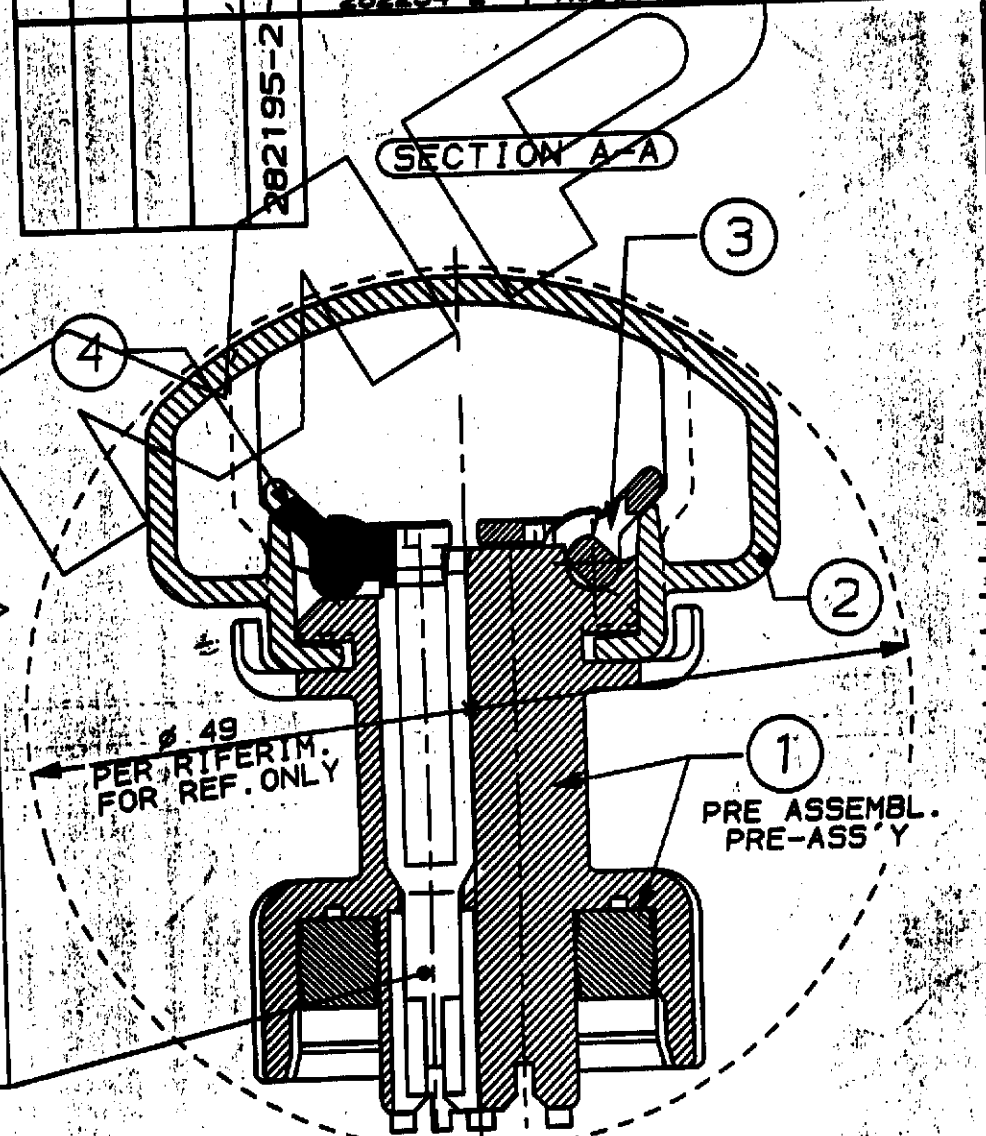
METRIC

PROIEZIONE EUROPEA
(EUROPEAN PROJECTION)

Q.TY REQ'D PER ASS'Y		PART. LIST		
		PART. NO.	DESCRIPTION	QTY
	1	282267-1	SEC. LOCK 19 POS.	4
	1	282266-1	SEC. LOCK 18 POS.	3
	1	282268-1	COVER	2
	1	282264-2	HOUSING ASS'Y	1



N°35 CAVITA' ADATTE PER TERMINALE
 "AMP JUNIOR POWER TIMER" E RELATIVI GOMMINI.
 N°35 CAVITIES SUITABLE
 FOR "AMP JUNIOR POWER TIMER" CTS.



CAVITA' PER SFIATO "B"
(VEDI TERMINALE PN 282270-12)
VENT-HOLE

VISTA CONN.
SENZA COPERCHIO
VIEW HSG
WITHOUT COVER

CAVITA' OSTRUITA "A"
CLOSED HOLE

BLACK	1	282195-2
COLOUR	MATERIALE (MATERIAL)	NUMERO (PART NUMBER)

CUSTOMER DWG. FOR REFERENCE ONLY
DISEGNO PER CLIENTE SOLO PER RIFERIMENTO

THIS DRAWING IS UNPUBLISHED			
© COPYRIGHT 1980 BY AMP INCORPORATED, PITTSBURGH, PA. ALL INTERNATIONAL RIGHTS RESERVED. AMP PRODUCTS MAY BE COVERED BY U.S. AND FOREIGN PATENT AND/OR PATENT PENDING.			
TOLLERANZE, SE NON DIVERSAMENTE SPECIFICATO	DIAM. ISOLANTE (INS. DIA. RANGED)	RANGO FILE (WIRE RANGED)	SCALA (SCALE)
± 0.3	1.7-2.1 mm	0.5-1.0 mm	-
ANGOLI (ANGLES)	2.4-3.0 mm	1.5-2.5 mm	-
± 2°	AMP ITALIA S.p.A. Corso P. LLI Garvi, 18 COLLENO (TORINO)		

- NOTES:**
- 1 MATERIALI: HSG, COVER AND SEC. LOCKS IN PA 66 GLASS FILLED - SEALING OF SILICONE RUBBER
 - 2) ITEMS 1, 2, 3, 4 PACKAGE INTO A CARTON BOX.

- NOTE:**
- 1 MATERIALI: -BLOCCHETTO, COPERCHIO E SEC. LOCK IN PA 66 CAR. VETRO - GUARNIZIONE IN SILICONE (Col. ROSSO)
 - 2) I PART. 1, 2, 3, 4 SONO CONFEZIONATI IN KIT IN UN'UNICA SCATOLA DI CARTONE.

REV. A	RELEASED FOR PRODUCTION EC ET00-0175-83	CONT. (CONT.)	11 MAY 1980	DIS. (DIS.)	E. CINI	DESCRIZIONE (DESCRIPTION)	35 P. SPLASH PROOF CONN. WITH SECONDARY LOCK	REV. 1	FOGLIO (SHEET) 2
REV. B	REVISIONI (REVISION RECORD)	DIS. (DIS.)	DATA (DATE)	APP. (APP.)	TARTARI	LOC. (LOC.)	SIZE (SIZE)	NUMERO (NUMBER)	COMP. (COMP.)
		I A3 C-282195		A		1		DI (DI)	

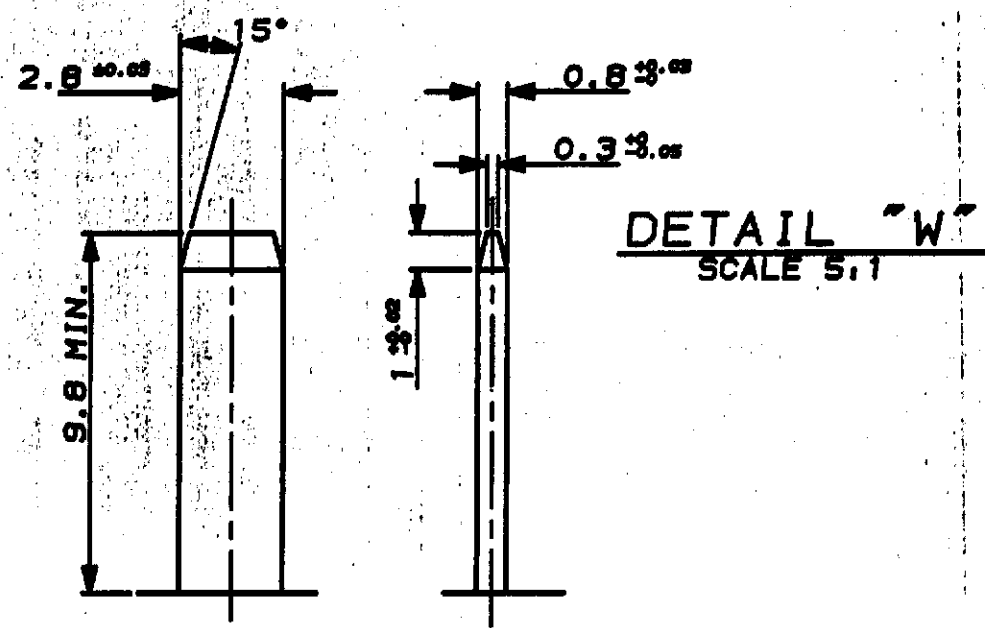
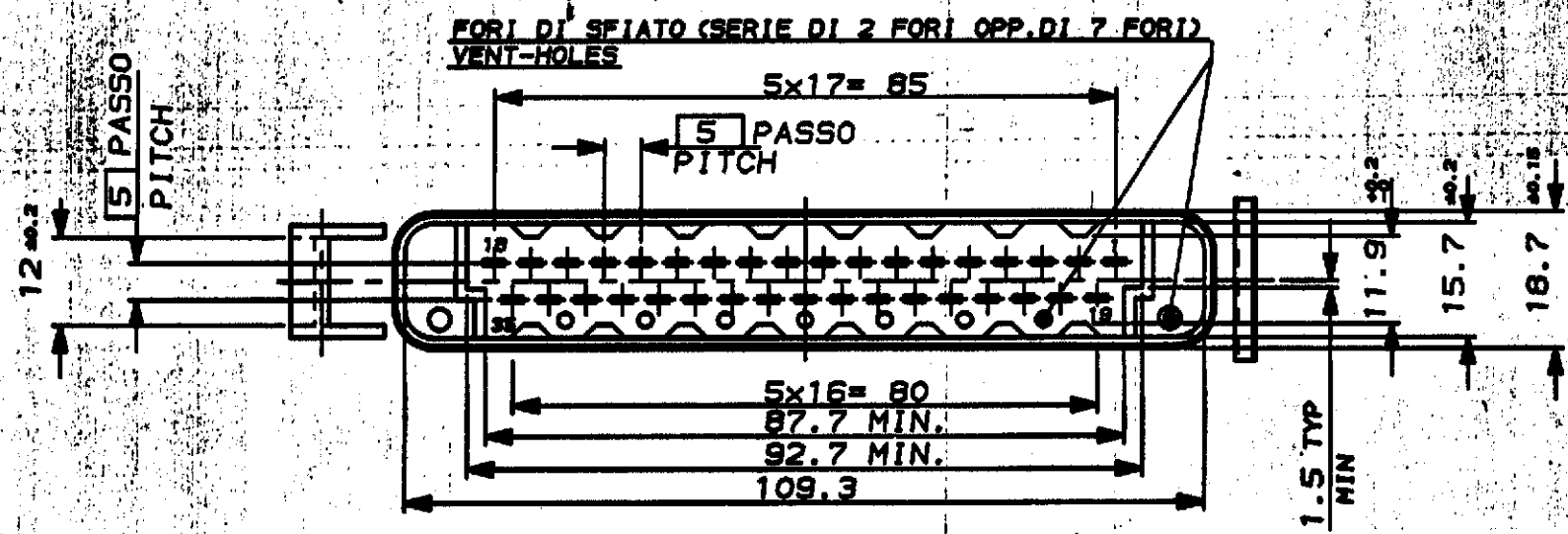
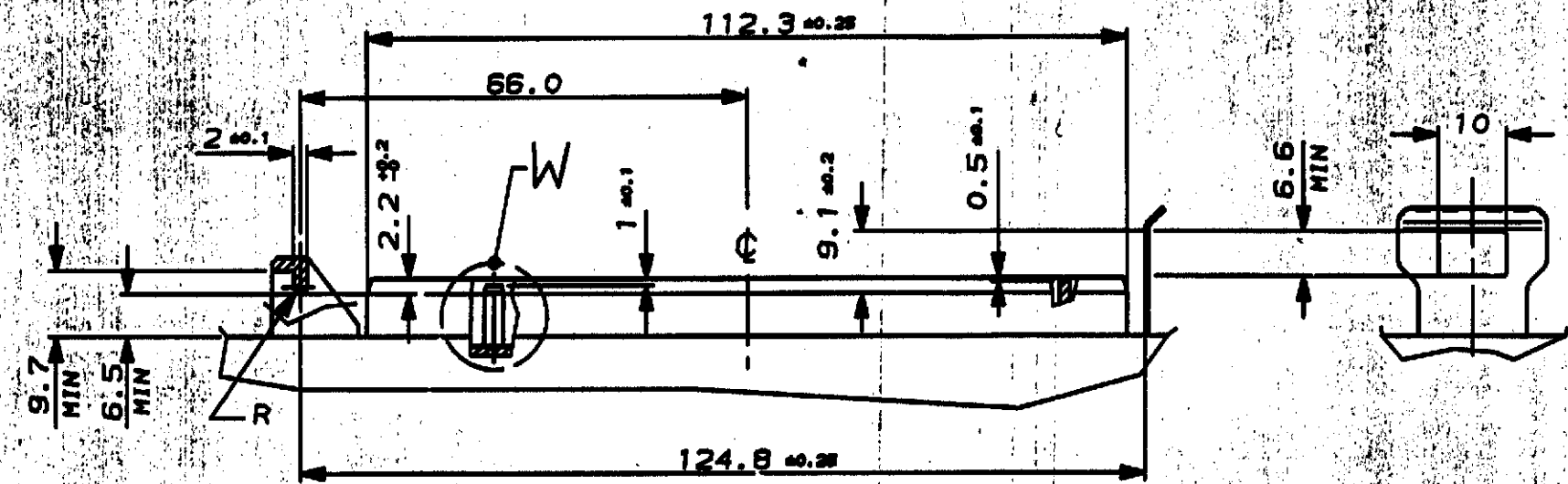
STANDARD VERSION

SCALA NON IMPERATIVA
(DO NOT SCALE)
DIMENSIONI IN mm
DIMENSIONS IN mm

METRIC

PROIEZIONE EUROPEA
EUROPEAN PROJECTION

INTERFACCIA D'ACCOPIAMENTO COUNTERPART



SEE SHEET 1 OF 2

(FINISH / COLOUR)	MATERIALE (MATERIAL)	NUMERO (PART NUMBER)
CUSTOMER DWG. FOR REFERENCE ONLY	DISEGNO PER CLIENTE SOLO PER RIFERIMENTO	
THIS DRAWING IS UNPUBLISHED		
© COPYRIGHT IS BY AMP INCORPORATED, HARTFORD, PA. ALL INTERNATIONAL RIGHTS RESERVED. AMP PRODUCTS MAY BE COVERED BY U.S. AND FOREIGN PATENT AND/OR PATENT PENDING.		
TOLLERANZE, SE NON DIVERSAMENTE SPECIFICATE	DIAH. ISOLANTE (CING. DIA. RANGE)	RANGO FILE (WIRE RANGE)
TOLERANCES, UNLESS OTHERWISE SPECIFIED	-	-
± 0.3		
ANGOLI (ANGLES) ± 2°		
DIS. E.CINI (COR.) 30 NOV. '82	DESCRIZIONE (DESCRIPTION) 35 P. SPLASH PROOF CONN. with SECONDARY LOCK	
CONT. - 28NOV83 C. TARTARI	LOC. SIZE (LOC. NO.)	REV. (REV.)
APP. (APP.)	NUMERO (NO.)	FOGLIO (SHEET)
	IA3C-282195	A 22

DISTRIBUZIONE
PRINT (DISTR.)