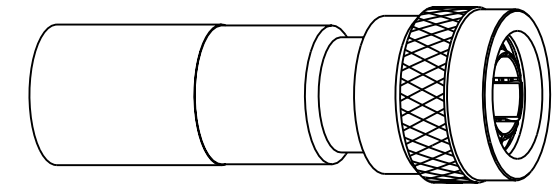


NOTES:

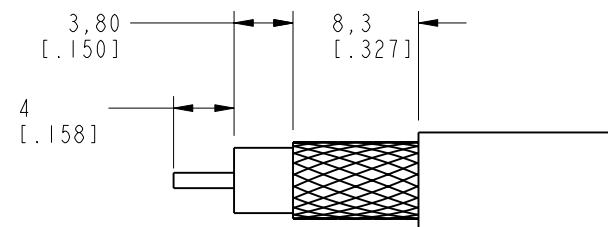
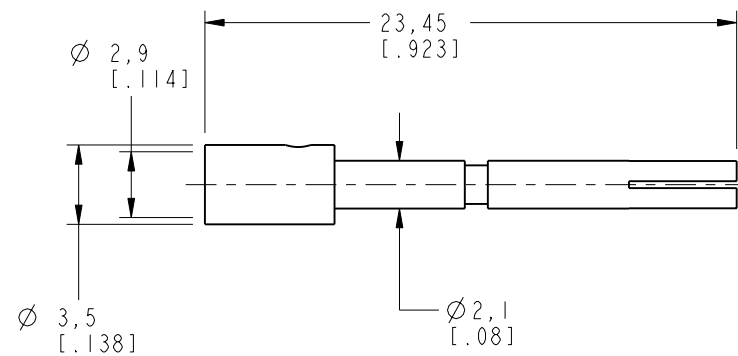
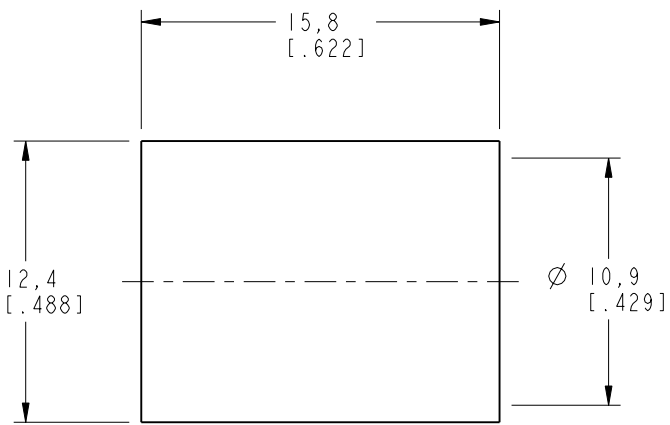
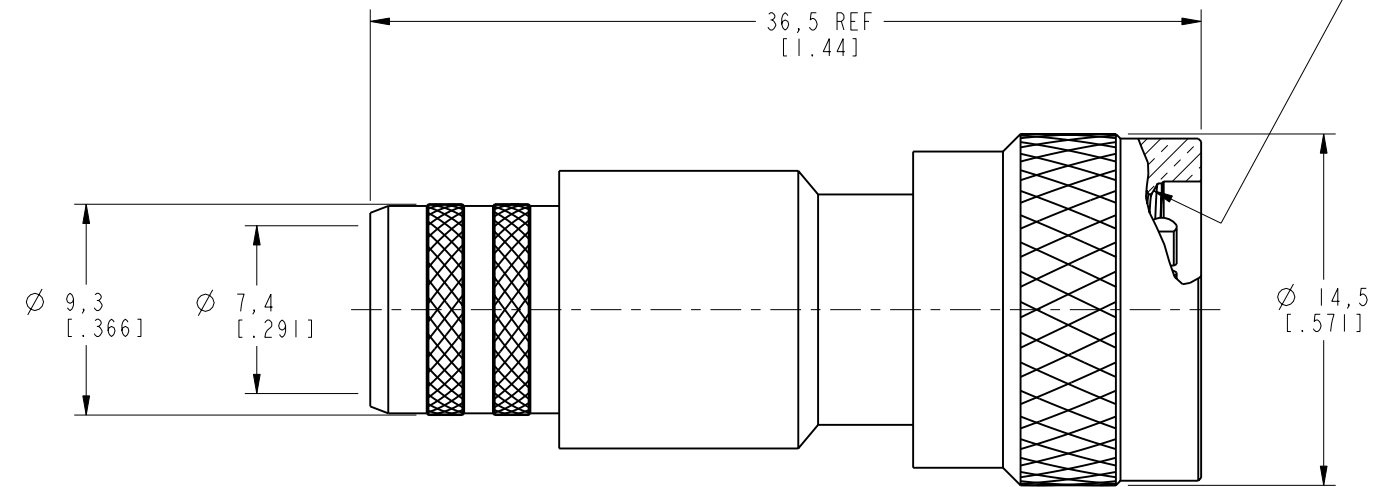
- MATERIALS OF CONSTRUCTION:  
 SHELL, BODY, BARREL, RETAINER RING & FERRULE = BRASS (QQ-B-626), NICKEL PLATED  
 CONTACT PIN = PHOSPHOR BRONZE, GOLD PLATED  
 RING = DELRIN, NATURAL  
 WASHER = BRASS (QQ-B-613), NICKEL PLATED  
 INSULATOR = TEFLON PER MIL-P-19468  
 GASKET = SILICONE RUBBER, COLOR RED
- CRIMPED FERRULE = HEX CRIMP SIZE .429  
 CRIMPED CONTACT PIN = HEX CRIMP SIZE .118

31-6033		REVISIONS			
DRAWING NO.	REV	DESCRIPTION	DATE	ECO	APPR
THIRD ANGLE PROJ.	A	RELEASE TO MFG.	5/15/00	43358	CPM



SCALE 1.500

7/16-28UNEF-2B THREAD



RECOMMENDED CABLE STRIPPING DIMENSIONS  
 SCALE 2.000

CUSTOMER OUTLINE DRAWING

ALL OTHER SHEETS ARE FOR INTERNAL USE ONLY

UNLESS OTHERWISE SPECIFIED, DIMENSIONS ARE IN INCHES AND TOLERANCES ARE: 0.5 - 6mm ±0.2mm      6 - 30mm ±0.4mm      30 - 120mm ±0.6mm	MATERIAL	DRAWN C. McGRATH	DATE 03-May-00	TITLE <b>TNC REVERSE POLARITY CRIMP PLUG</b> (FOR BELDEN 8214, 9913)	<b>Amphenol</b> Amphenol Corporation Communication and Network Products Division Danbury, CT U.S.A. 06810		
	REFERENCE EAR 967551-0 GEN# 31-6034_ASSY	ENGINEER T. AUBIN	DATE 03-May-00				
NOTICE - These drawings, specifications, or other data (1) are, and remain the property of Amphenol Corp. (2) must be returned upon request; and (3) are confidential and not to be disclosed to any person other than those to whom they are given by Amphenol Corp. The furnishing of these drawings, specifications, or other data by Amphenol Corp., or to any other person to anyone for any purpose is not to be regarded by implication or otherwise in any manner licensing, granting rights or permitting such holder or any other person to manufacture, use or sell any product, process or design, patented or otherwise, that may in any way be related to or disclosed by said drawings, specifications, or other data.	APPROVED T. AUBIN	DATE 10-May-00	CAD FILE I:\TNC\31-6033	CODE ID 74868	DWG SIZE B	DRAWING NO. 31-6033	REV A
			SCALE: 3.0:1	SHEET 2 OF 2			