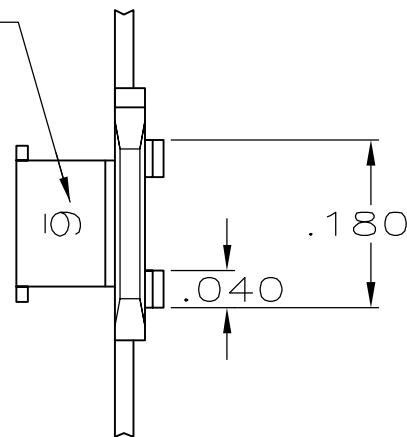


THIS DRAWING IS UNPUBLISHED. RELEASED FOR PUBLICATION ,19
© COPYRIGHT 19 BY AMP INCORPORATED. ALL INTERNATIONAL RIGHTS RESERVED.

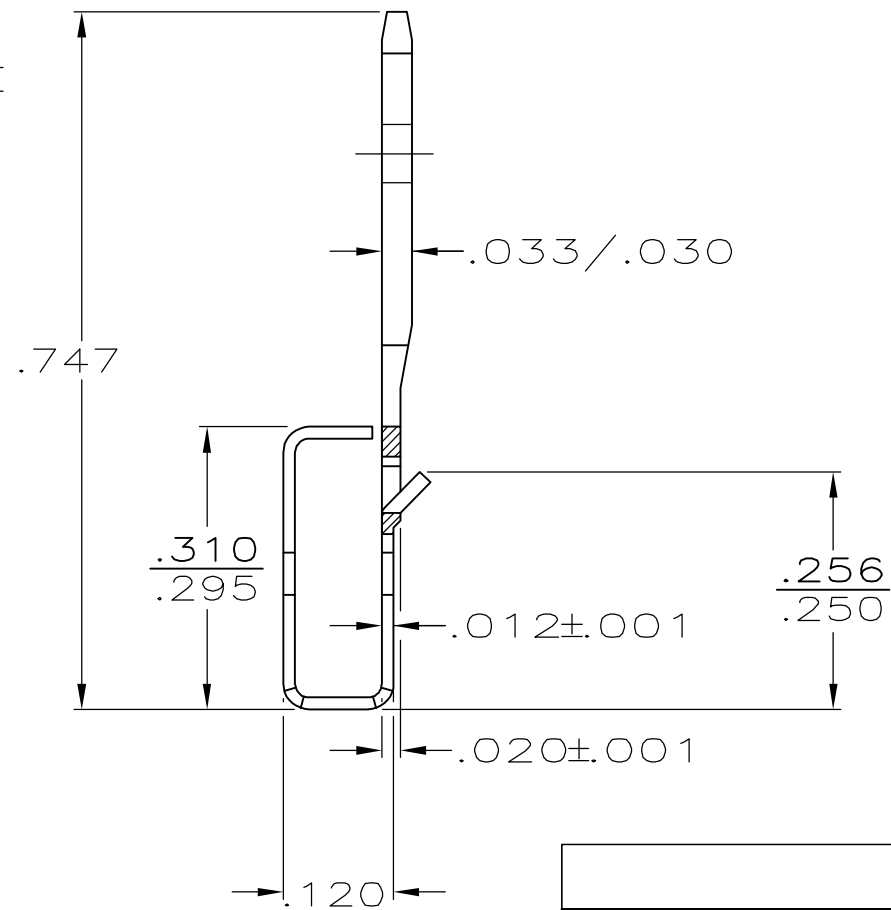
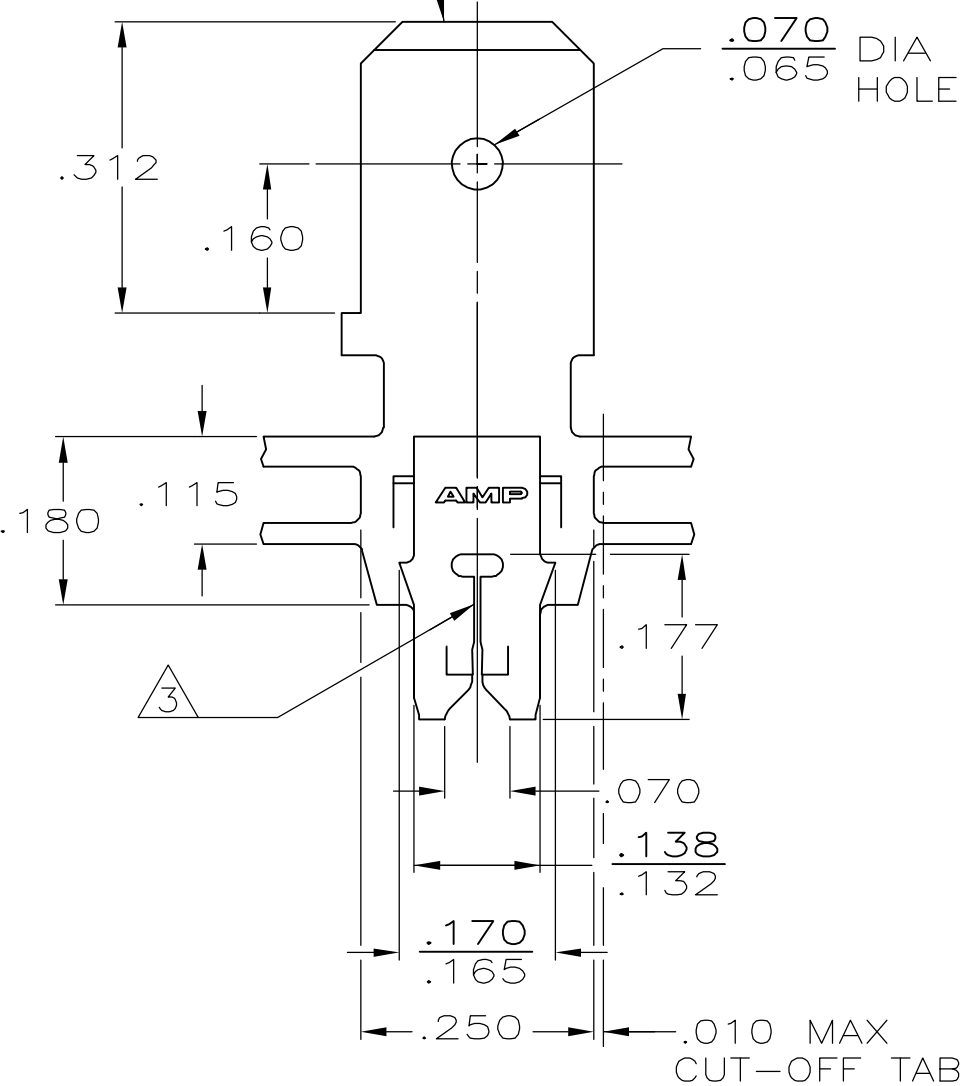
LOC	DIST	P	F	REVISIONS				
AF	50			ZONE	LTR	DESCRIPTION	DATE	APPD
					E	REV PER ECR 06-010492	02OCT06	JR/GP

IDENTIFICATION NUMBER FOR MAGNET WIRE RANGE



- 1 MAG-MATE CAVITY SPECIFICATION.
- 2 CONTINUOUS STRIP ON REELS WITH TERMINALS LOCATED ON $.330 \pm .003$ CENTERS.
- 3 SLOT TERMINATES EITHER SINGLE OR DOUBLE MAGNET WIRES OF THE SAME TYPE AND SIZE, COPPER RANGE IS #30-#27 AWG.

FITS .250 SERIES FASTON RECEPTACLE



082 PRE-MILLED BRASS	63499-2
4M PRE-MILLED BRASS	63499-1
FINISH	PART NO

DO NOT SCALE PRINT. UNLESS SPECIFIED DIMENSIONS IN INCHES TOLERANCES ON: 2 PLC DEC ± - 3 PLC DEC ± .010 ANGLES ± -	DR M.S. FEHER 6/30/88	AMP INCORPORATED Harrisburg, Pa. 17105
	CHK JR RUTH 7/7/88	
MATERIAL SEE TABLE	APPD N.E. NEFF 7/8/88	NAME TAB, 250 FASTON,™ MAG-MATE™
	APPD C G ATHERTON 7/8/88	SIZE B
FINISH .000080 MIN TIN	PRODUCT SPEC 108-2012	FSCM NO 00779
	APPLICATION SPEC 114-2094 1	DRAWING NO 63499
WEIGHT -	SCALE 5:1	SHEET 1 OF 1