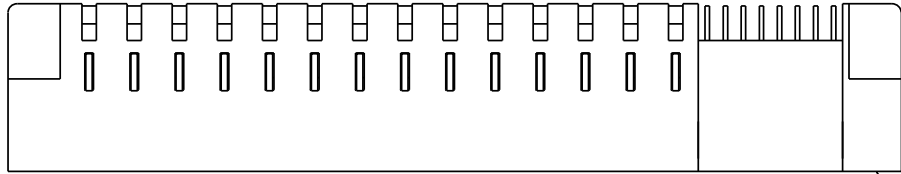


Tous droits strictement reserves. Reproduction ou communication a des tiers interdite sous quelque forme que ce soit sans autorisation écrite du propriétaire. Propriete de c FCI. Droits de reproduction FCI.

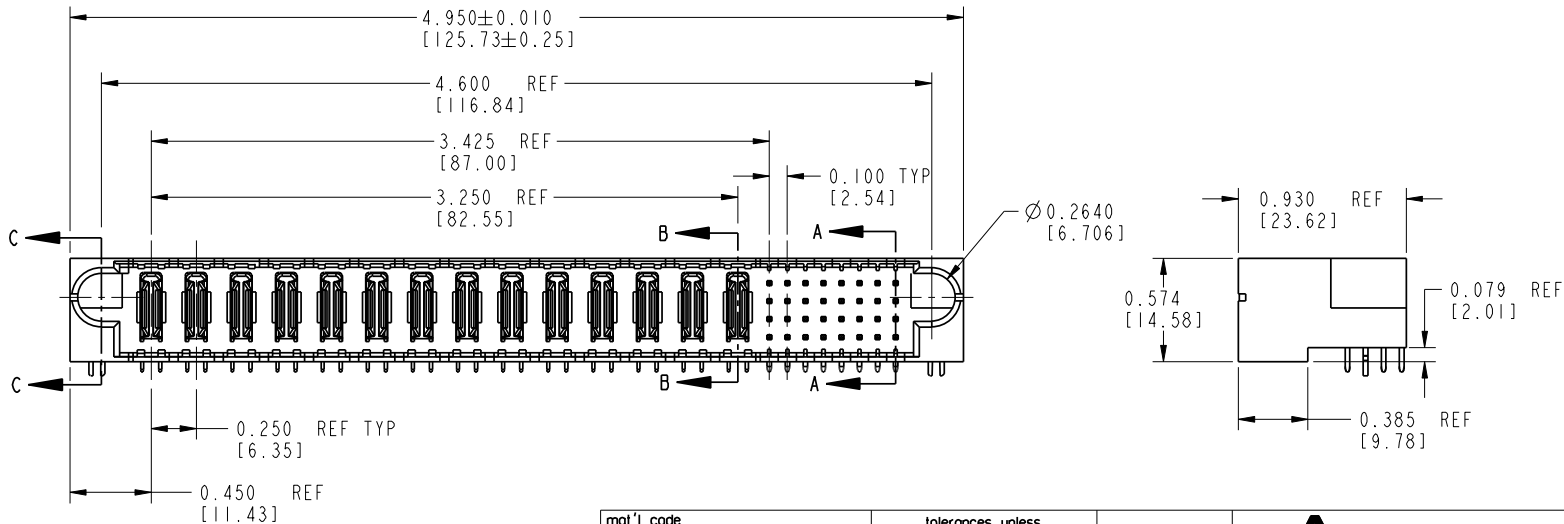
**FCI**

All rights strictly reserved. Reproduction or issue to third parties in any form without written authority from the proprietor. Property of FCI. Copyright FCI.

PRODUCT NUMBER  
SEE SHEET 3



SEE NOTE 7



mat'l code SEE NOTE 6				tolerances unless otherwise specified		CUSTOMER COPY	 www.fciconnect.com
lir	ecn no.	dr	date	linear	.XX±.01/.X±.3	projection	
J	DG05-0363	GUOJM	09/28/05		.XXX±.005/.X±.13	 INCH / MM	title
K	DG05-0563	RYAN	12/29/05		XXX±.0020/.XXX±.05		 scale 1:1
				angles	0°±2°		product family
				dr	C. BAROT 12-30-98		PWRBLADE
				engr	J. BROWN 12-30-98		code
				chr	J. BROWN 12-30-98		213
				appd	J. BROWN 12-30-98		SHEET
							1 OF 3
sheet index	revision sheet	K	K	K			
		1	2	3			

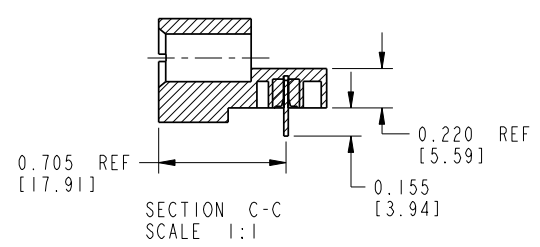
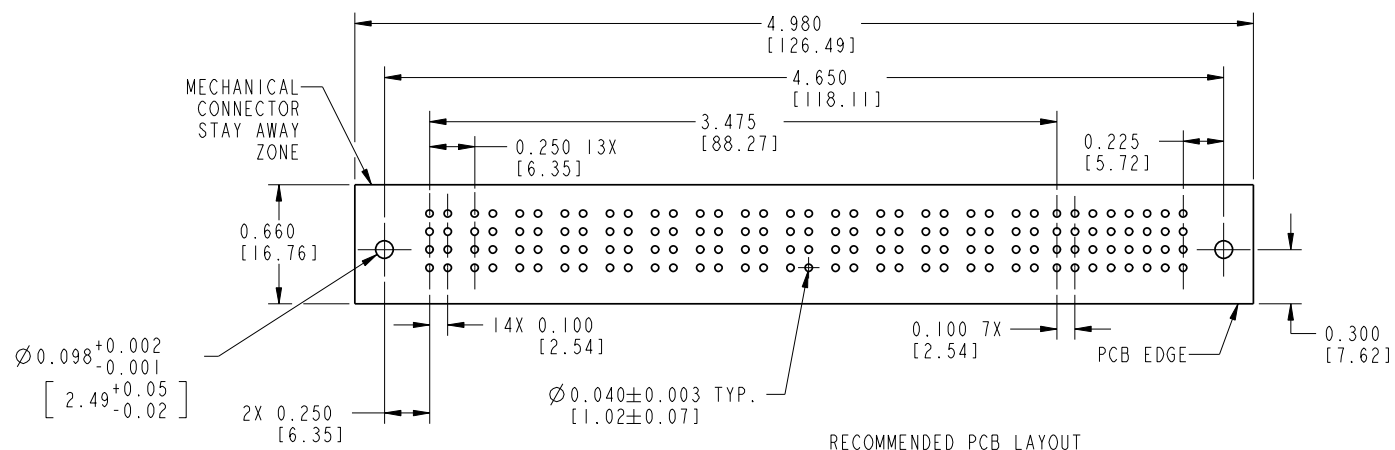
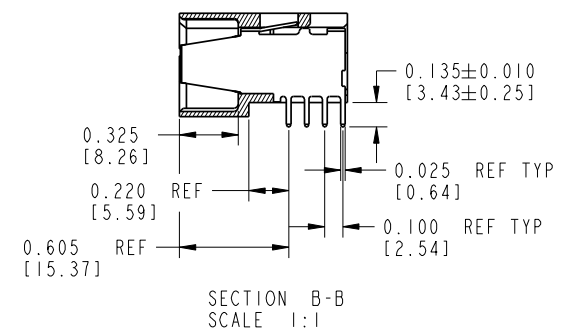
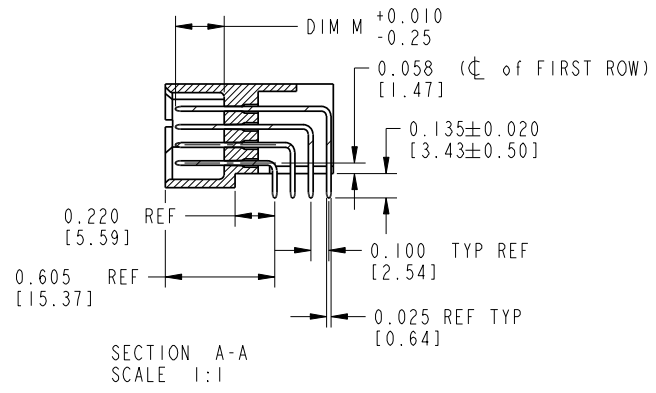
form no. 7530-001-103

cage code 22526

Tous droits strictement réservés. Reproduction ou communication o des tiers interdite sous quelque forme que ce soit sans autorisation écrite du propriétaire. Propriété de c FCI. Droits de reproduction FCI.

All rights strictly reserved. Reproduction or issue to third parties in any form without written authority from the proprietor. Property of FCI. Copyright FCI.

PRODUCT NUMBER  
SEE SHEET 3



mat'l code				tolerances unless otherwise specified		CUSTOMER COPY		 www.fciconnect.com	
lfr	ecn no.	dr	date	linear	.XX±.01/.X±.3	projection	title 14P + 32S		
K					.XXX±.005/.X±.13		RIGHT ANGLE SOLDER HEADER		
				angles	XXX±.0020/.XXX±.05	INCH / MM	product family	PWRBLADE	code
				dr	0°±2°	scale	size	51401	213
				enrg	C. BAROT 12-30-98	1:1	dwg no		SHEET
				chr	J. BROWN 12-30-98				2 OF 3
				appd	J. BROWN 12-30-98				
sheet index	revision sheet								

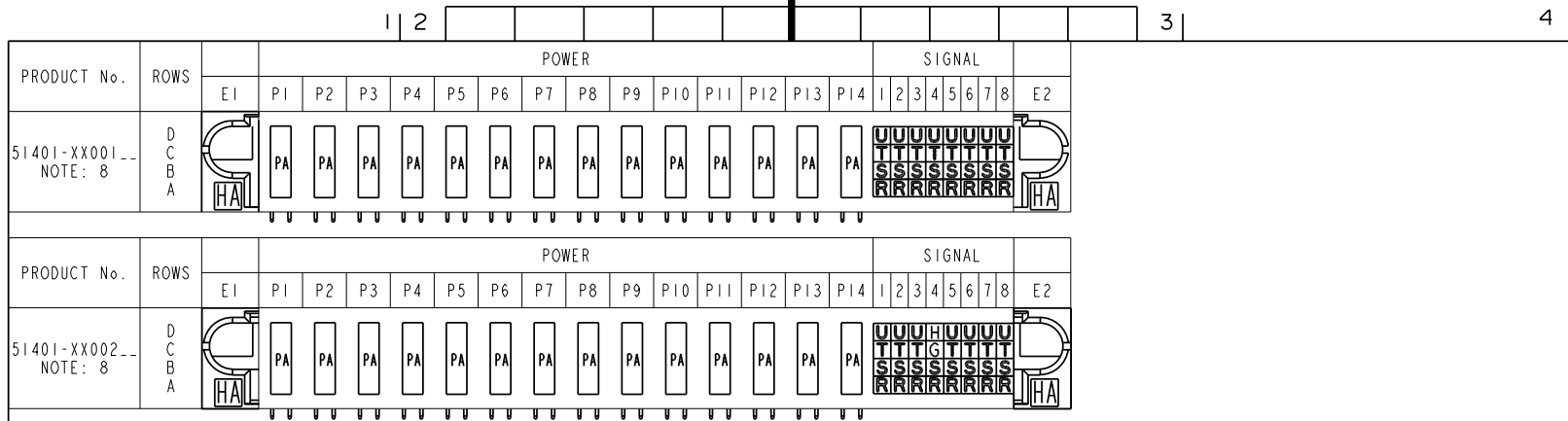
form no. 7530-001-103

cage code 22526

Tous droits strictement reserves. Reproduction ou communication o des tiers interdite sous quelque forme que ce soit sans autorisation ecrite du propriétaire. Propriete de c FCI. Droits de reproduction FCI.



All rights strictly reserved. Reproduction or issue to third parties in any form whatever is not permitted without written authority from the proprietor. Property of FCI. Copyright FCI.



PCB - NOTES

1. ALL DIMENSIONS ARE BASIC UNLESS OTHERWISE SPECIFIED.
2. ALL THROUGH HOLES ARE LOCATED WITH A TRUE POSITION OF .004
3. ALL HOLE DIAMETERS ARE FINISHED HOLE SIZE
4.  $\varnothing 0.098/2.49$  THROUGH HOLES ARE UNPLATED
5.  $\varnothing 0.0453/1.151$  DRILLED HOLES PLATED WITH .0003/.007 MIN SnPb OVER .001/1.03 to .003/.08 PLATING TO ACHIEVE A  $.080 \pm .003/1.02 \pm .08$  HOLE

CONNECTORS - NOTES

6. HOUSING MATERIAL: UL94V-0 GLASS-FILLED HIGH TEMP THERMOPLASTIC  
SIGNAL PIN MATERIAL: COPPER ALLOY  
POWER CONTACT MATERIAL: COPPER ALLOY
7. "MANUFACTURER" NAME, P/N, AND DATE CODE TO APPEAR ON THIS SURFACE
8. PLATING:

51401-XXYYY: SIGNAL PIN: 30u"/0.76um Au OVER 50u"/1.27um Ni ON THE CONTACT AREA AND 100u"/2.54um SnPb OVER 50u"/1.27um Ni ON THE TERMINATION AREA  
POWER PIN: 30u"/0.76um Au OVER 50u"/1.27um Ni ON THE CONTACT AREA AND 100u"/2.54um SnPb OVER 50u"/1.27um Ni ON THE TERMINATION AREA

51401-XXYYLFF: SIGNAL PIN: 30u"/0.76um Au OVER 50u"/1.27um Ni ON THE CONTACT AREA AND 78u"/2.00um Sn OVER 50u"/1.27um Ni ON THE TERMINATION AREA  
POWER PIN: 30u"/0.76um Au OVER 50u"/1.27um Ni ON THE CONTACT AREA AND 78u"/2.00um Sn OVER 50u"/1.27um Ni ON THE TERMINATION AREA

PART NUMBER 51401-XXYYLFF MEETS EUROPEAN UNION DIRECTIVE AND OTHER COUNTRY REGULATIONS AS DESCRIBED IN GS-22-008.

THE HOUSING WILL WITHSTAND EXPOSURE TO 260° PEAK TEMPERATURE FOR 10 SECONDS IN A WAVE SOLDER APPLICATION WITH A CIRCUIT BOARD.

CODE	DIM "M" MATING LENGTH	CONTACT TYPE
G	0.220 [5.59]	SIGNAL
H	0.220 [5.59]	SIGNAL
R	0.270 [6.86]	SIGNAL
S	0.270 [6.86]	SIGNAL
T	0.270 [6.86]	SIGNAL
U	0.270 [6.86]	SIGNAL
PA	N/A [N/A]	POWER
HA	N/A [N/A]	HOLD-DOWN

mat'l code				tolerances unless otherwise specified		CUSTOMER COPY		 www.fciconnect.com	
lfr	ecm no.	dr	date	linear	.XX±.01/.X±.3	projection	title 14P + 32S		
K				angles	.XXX±.005/.X±.13	 INCH / MM	RIGHT ANGLE SOLDER HEADER		
				dr	XXX±.0020/.XXX±.05		product family	PWRBLADE	code
				enrg		scale	size	dwg no	51401
				chr	J. BROWN 12-30-98	1:1	A	SHEET 3 OF 3	
				appd	J. BROWN 12-30-98				
sheet index	revision sheet								

form no. 7530-001-I03

cage code 22526