

Table with columns: PART NUMBER, REVISION, DESCRIPTION, FEED TYPE. Includes a drawing of the terminator interface adapter.

Table: APPLICATOR STYLE CONVERSION CHART. Columns: CONVERT TO, PART NUMBERS REQUIRED.

Table: APPLICATOR DATA. Columns: CRIMP, SIZE, TYPE.

Table: APPLICATOR CONVERSION KITS. Columns: PART NUMBER, INSULATION DIAMETER RANGE.

Table: TERMINAL DATA: DEUTSCH TERMINAL TE CRIMP SPECIFICATION. Includes terminal name, wire strip length, and terminals applied.

Table: TERMINAL DATA: DEUTSCH TERMINAL TE CRIMP SPECIFICATION. Includes terminal name, wire strip length, and terminals applied.

Table: WIRE SIZE, CRIMP HEIGHT mm [INCH], CRIMP HEIGHT REFERENCE SETTING.

- 1 RECOMMENDED SPARE PARTS
2 GREASE BEARING SURFACES LIGHTLY
3 LUBRICATE DAILY PER THE APPLICATOR INSTRUCTION SHEET SUPPLIED WITH THE APPLICATOR.
4 APPLICATOR SPECIFIC DATA TO BE ENTERED INTO BLANK MEMORY CHIP AT ASSEMBLY.
5 ADJUSTMENT OF THE STRIPPER MAY BE REQUIRED WHEN MOVING THE APPLICATOR BETWEEN BENCH AND LEADMAKER APPLICATIONS.
6 APPLY PART NUMBER 1-23419-5 LOCTITE TO THREADS OF ITEMS 62.
7 GREASE THREADS, GROOVE AND O-RING ON ITEMS 35 & 252.
8 MAGNET, ITEM 166 MUST BE ORIENTED CORRECTLY IN ORDER TO PROPERLY ACTUATE THE COUNTER.
9 CRIMP HEIGHT REFERENCE SETTING WAS THE SETTING USED WHEN THE APPLICATOR WAS QUALIFIED AT THE FACTORY.
10 SPARE FEED CAM STORAGE LOCATION REFER TO INSTRUCTION SHEET FOR ADDITIONAL INFORMATION.
11 TO CONVERT THE APPLICATOR TO A NON-CARRIER CUTTING STYLE, REMOVE ITEM 13 AND ATTACH TO THE LOCATION ON THE BACK SIDE OF THE HOUSING.

- WHEN ASSEMBLING A NON CRIMP HEIGHT ADJUST APPLICATOR (-6) USE SHIMS FROM ITEM 260 TO ACHIEVE A NOMINAL SHIM HEIGHT OF 4.40.
SEE APPROPRIATE APPLICATOR LOG SHEETS FOR APPLIED TERMINALS, WIRE RANGE AND MEMORY CHIP.
TERMINAL LUBRICANT IS RECOMMENDED.

\*WARNING
ON INSTALLATION, SET WIRE DISC, ITEM 40 TO LARGEST WIRE SIZE SETTING. USE OF SETTINGS BELOW MINIMUM REQUIRED CRIMP HEIGHT SETTING WILL CAUSE DAMAGE TO CRIMP TOOLING.

Table with columns: PART NO, DESCRIPTION, ITEM NO. Lists various components like applicator shim pack, o-ring, push rod, bushing.

ATLANTIC VERSION
Shown on sheets 1 of 4 & 2 of 4
(Pacific version shown on sheets 3 of 4 & 4 of 4)

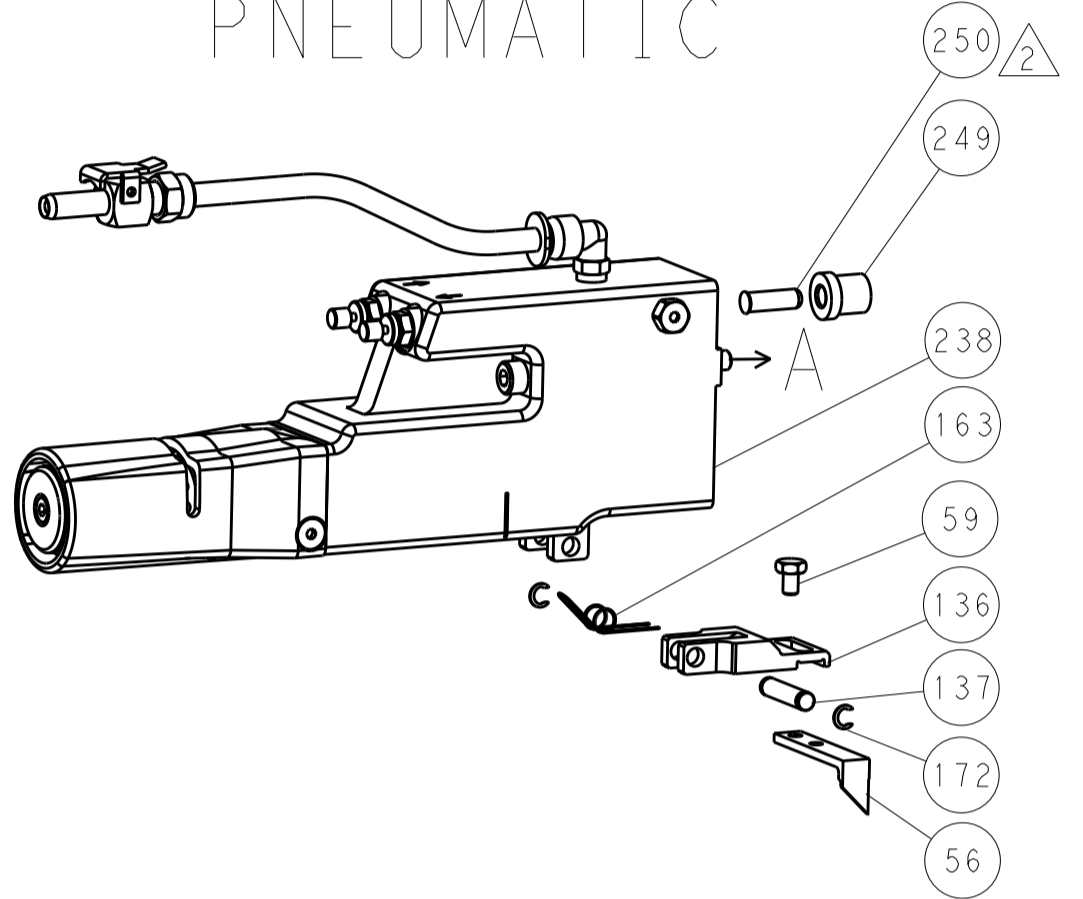
Large table with columns: P, LTM, DESCRIPTION, DATE, DWN, APVD. Lists numerous parts and their specifications.

LOC		DIST		REVISIONS			
A	66	P	LTM	DESCRIPTION	DATE	DMN	APVD
		-	-	SEE SHEET 1	-	-	-

### FEED TYPE MECHANICAL



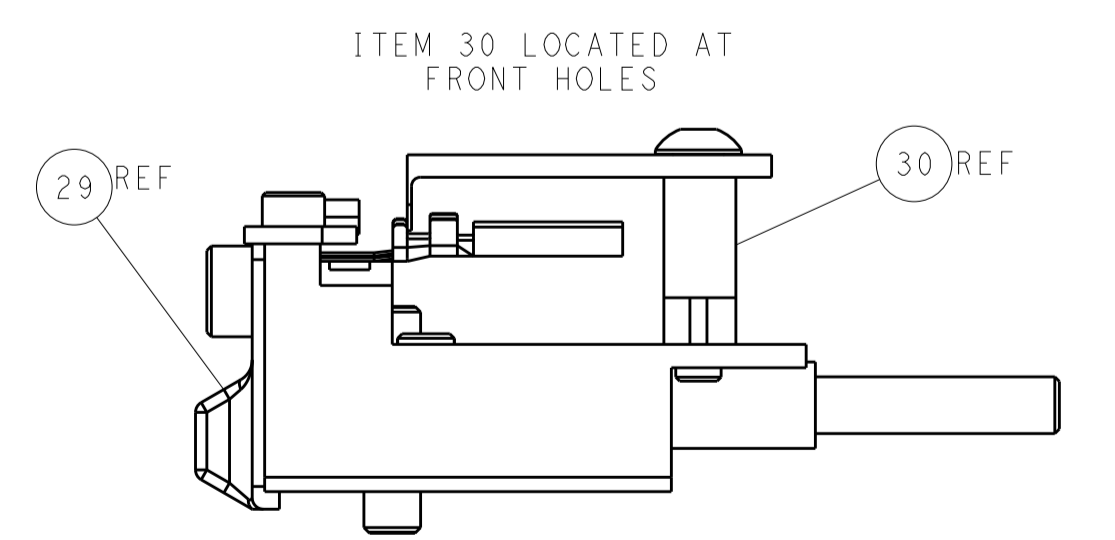
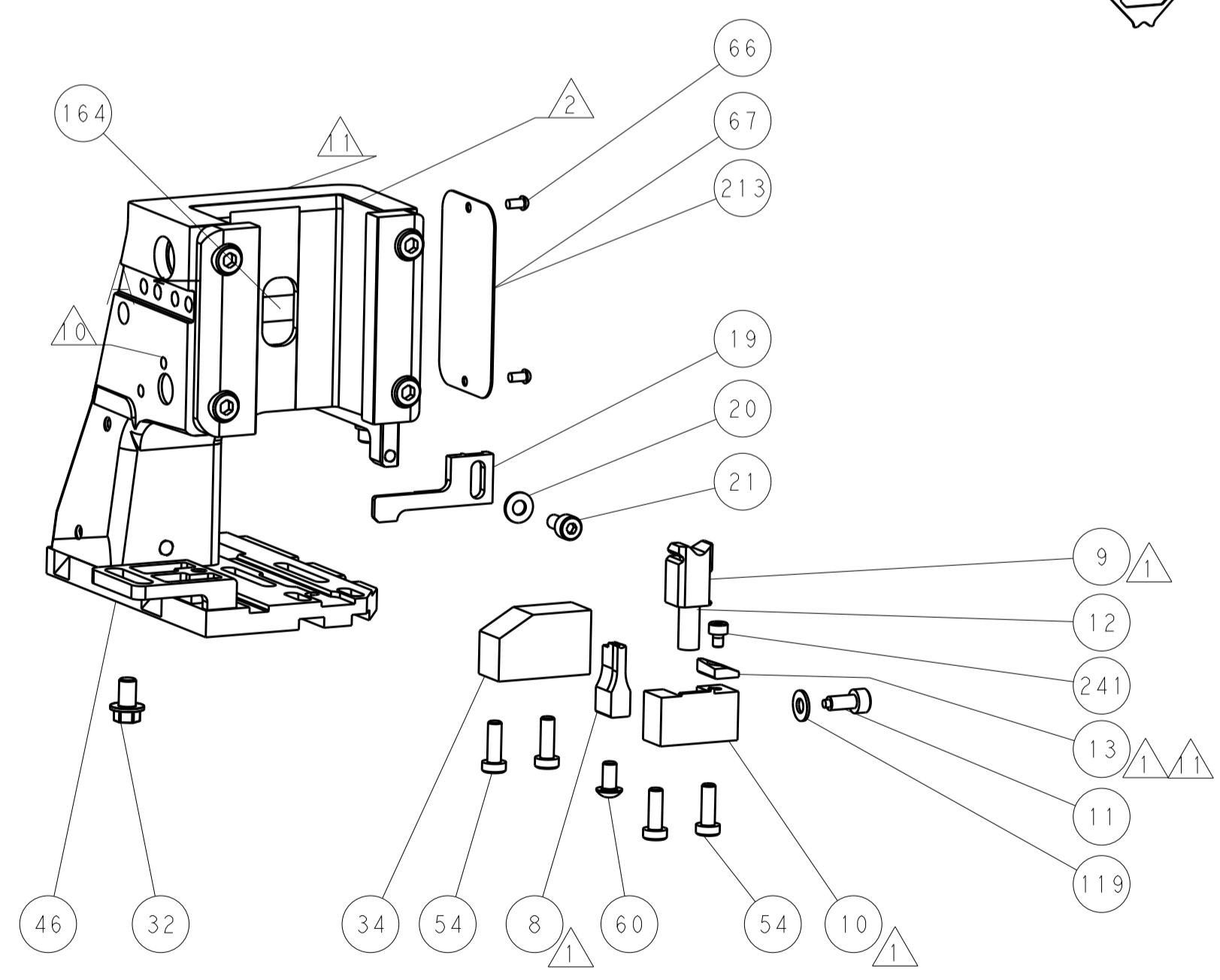
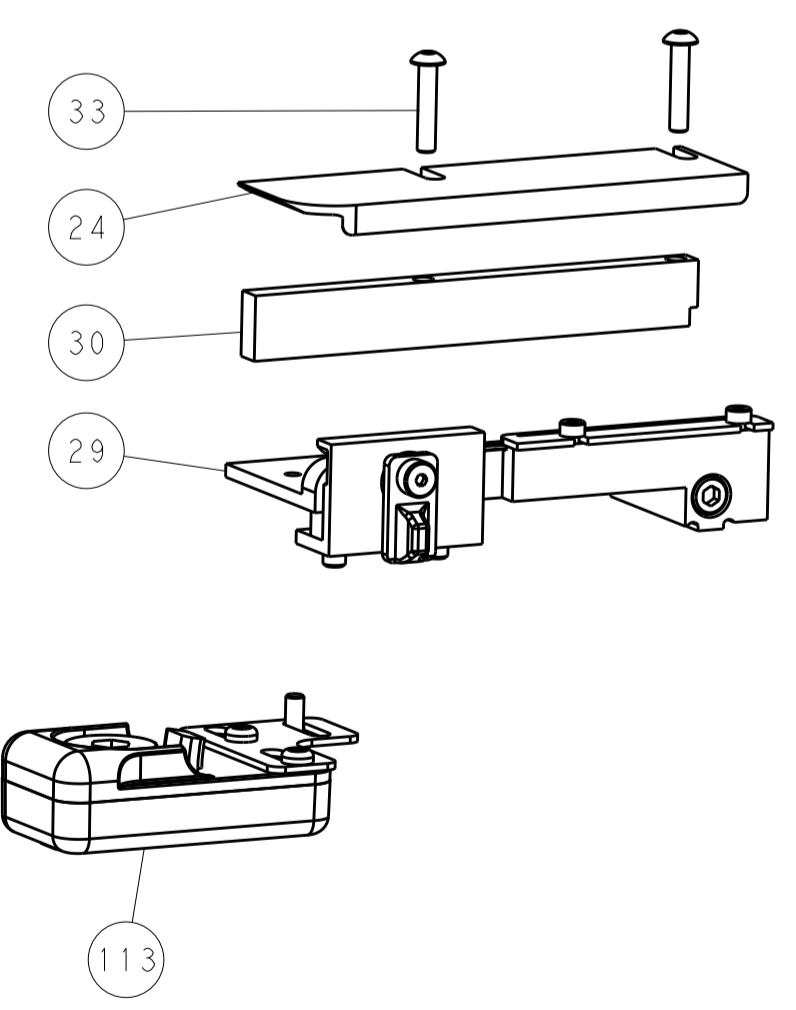
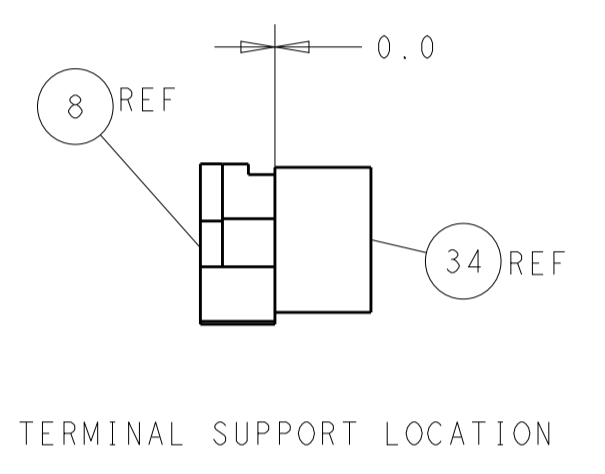
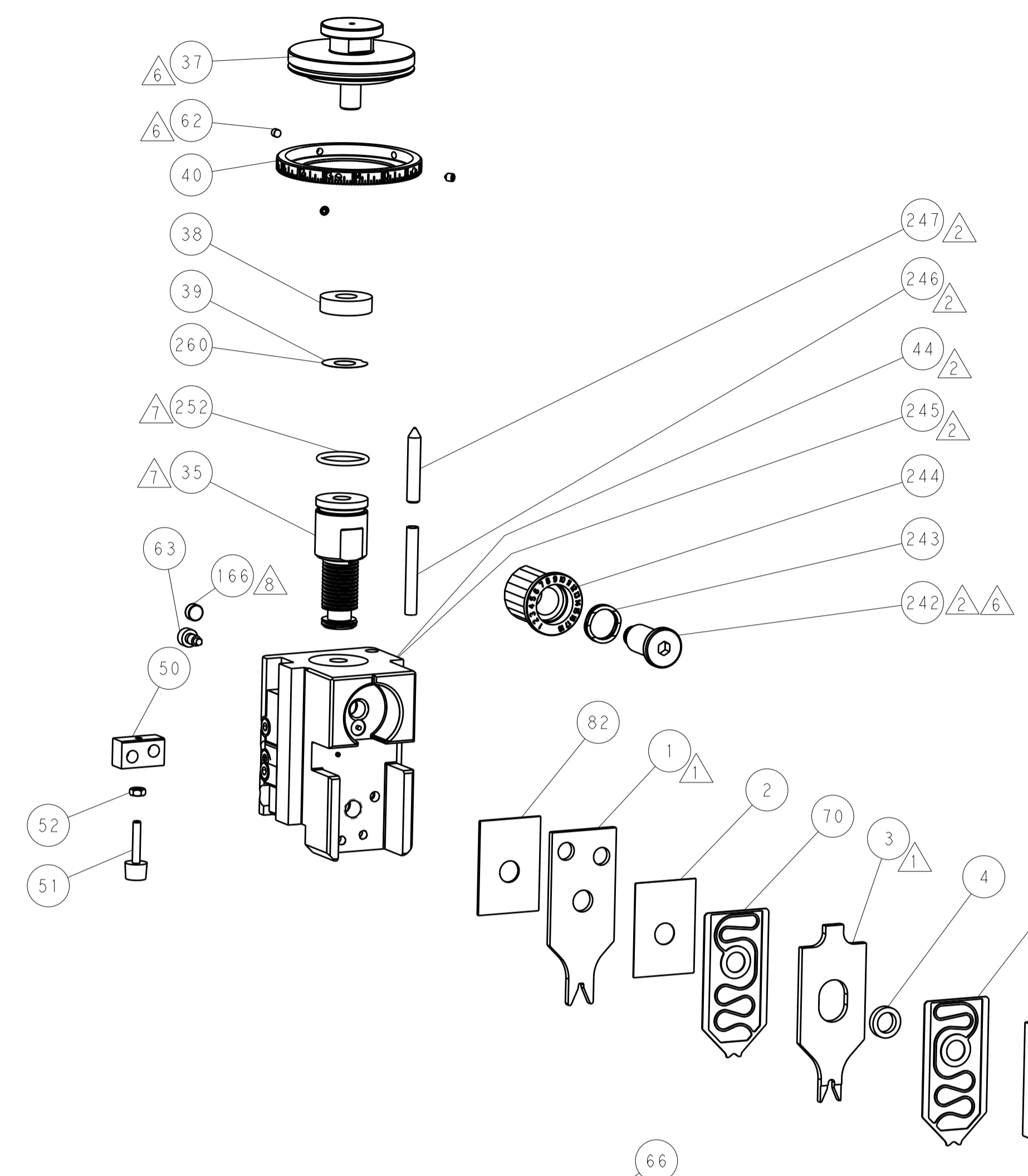
### PNEUMATIC



### SERVO LATCH PLATE



### CAM POSITIONS



FEED TRACK POSITION GUIDE BY INSULATION BARREL

**ATLANTIC VERSION**  
 Shown on sheets 1 of 4 & 2 of 4  
 (Pacific version shown on sheets 3 of 4 & 4 of 4)

DIMENSIONS:		TOLERANCES UNLESS OTHERWISE SPECIFIED:		DWG: R. KNEPPER 03-Oct-13		TE Connectivity	
mm	0 PLC	±		CHK: G. BAILEY 03-Oct-13	Harrisburg, PA 17105-3608		
	1 PLC	±		APVD: M. CLIFFORD 03-Oct-13	NAME: Ocean Side Feed Applicator		
	2 PLC	±			SIZE: CAGE CODE: DRAWING NO: A1100779 ©=2266101		RESTRICTED TO
	3 PLC	±			Customer Accessible Production Drawing		
	4 PLC	±			SCALE: 1:2 SHEET 2 OF 4 REV: B3		
MATERIAL:	FINISH:						

Table with columns: SET UP GAUGE (2119599-1), Loc (A), DIST (66), P, LTM, REVISIONS (DESCRIPTION, DATE, DWN, APVD)

Table: APPLICATOR STYLE CONVERSION CHART. Columns: PART NUMBER, REVISION, DESCRIPTION, FEED TYPE, CONVERT TO, PART NUMBERS REQUIRED.

Table: APPLICATOR DATA. Columns: CRIMP, SIZE, TYPE. Rows: WIRE, INSUL. Also includes APPLICATOR INSTRUCTIONS 408-10389.

Table: APPLICATOR CONVERSION KITS. Columns: PART NUMBER, INSULATION DIAMETER RANGE.

Table: TERMINAL DATA: DEUTSCH TERMINAL TE CRIMP SPECIFICATION. Columns: WIRE STRIP LENGTH, INSULATION DIAMETER RANGE, TERMINAL APPLICATION SPECIFICATION.

Table: TERMINAL DATA: DEUTSCH TERMINAL TE CRIMP SPECIFICATION. Columns: WIRE STRIP LENGTH, INSULATION DIAMETER RANGE, TERMINAL APPLICATION SPECIFICATION.

Table: TERMINALS APPLIED 1. Columns: TE TERMINAL, DEUTSCH TERMINAL.

Table: TERMINALS APPLIED 3. Columns: TE TERMINAL, DEUTSCH TERMINAL.

Table: WIRE SIZE, CRIMP HEIGHT mm [INCH], CRIMP HEIGHT REFERENCE SETTING.

\*WARNING ON INSTALLATION, SET WIRE DISC, ITEM 40 TO LARGEST WIRE SIZE SETTING. USE OF SETTINGS BELOW MINIMUM REQUIRED CRIMP HEIGHT SETTING WILL CAUSE DAMAGE TO CRIMP TOOLING.

- 1 RECOMMENDED SPARE PARTS
2 GREASE BEARING SURFACES LIGHTLY
3. LUBRICATE DAILY PER THE APPLICATOR INSTRUCTION SHEET SUPPLIED WITH THE APPLICATOR.
4 APPLICATOR SPECIFIC DATA TO BE ENTERED INTO BLANK MEMORY CHIP AT ASSEMBLY...
5. ADJUSTMENT OF THE STRIPPER MAY BE REQUIRED WHEN MOVING THE APPLICATOR BETWEEN BENCH AND LEADMAKER APPLICATIONS.
6 APPLY PART NUMBER 1-23419-5 LOCTITE TO THREADS OF ITEMS 62. APPLY PART NUMBER 2-23419-6 LOCTITE TO THREADS OF ITEMS 242.
7 GREASE THREADS, GROOVE AND O-RING ON ITEMS 139 & 152.
8 MAGNET MUST BE ORIENTED CORRECTLY IN ORDER TO PROPERLY ACTUATE THE COUNTER.
9 CRIMP HEIGHT REFERENCE SETTING WAS THE SETTING USED WHEN THE APPLICATOR WAS QUALIFIED AT THE FACTORY. ADJUSTMENT MAY BE NECESSARY WHEN RUNNING APPLICATOR IN THE FIELD.
10 SPARE FEED CAM STORAGE LOCATION REFER TO INSTRUCTION SHEET FOR ADDITIONAL INFORMATION.
11 TO CONVERT THE APPLICATOR TO A NON-CARRIER CUTTING STYLE, REMOVE ITEM 13 AND ATTACH TO THE LOCATION ON BACK SIDE OF THE HOUSING. REFER TO INSTRUCTION SHEET FOR ADDITIONAL INFORMATION.
12 SEE APPROPRIATE APPLICATOR LOG SHEETS FOR APPLIED TERMINALS, WIRE RANGE AND MEMORY CHIP.
13 TERMINAL LUBRICANT IS RECOMMENDED.

Table with columns: PART NO, DESCRIPTION, ITEM NO.

PACIFIC VERSION Shown on sheets 3 of 4 & 4 of 4 (Atlantic version shown on sheets 1 of 4 & 2 of 4)

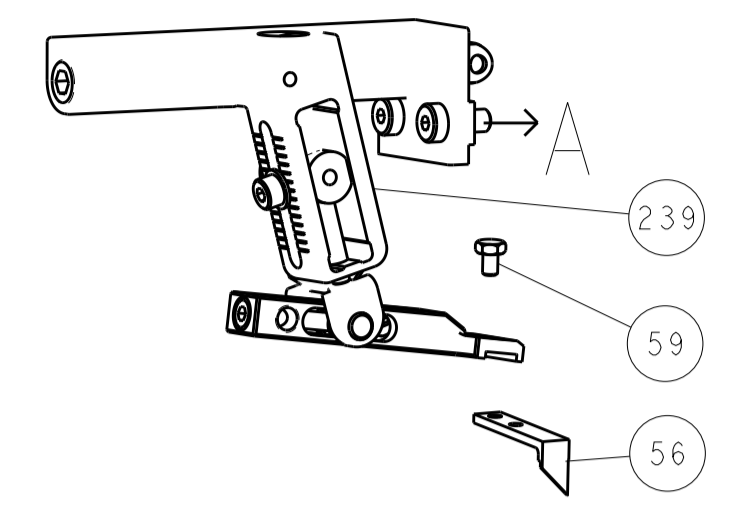
- 1 2079988-1 BUSHING, LCH5-12, MISUMI 249
1-22279-3 SPRING, COMPRESSION 246
2119082-9 CAM, SNAIL, INSULATION ADJUSTMENT 244
2079764-1 WASHER, WAVE SPRING, CREST-TO-CREST 243
2119083-1 RETAINER, INSULATION DIAL 242
7-18023-7 SCR, SKT HD CAP M3 X 4.0 241
2168400-6 SHCS, LOW HEAD, RoHS, M5 X 16 240
2119580-1 MECHANICAL FEED ASSEMBLY 239
2063440-1 AIR FEED MODULE 238
2119740-2 TAG IDENTIFICATION 213
1901094-3 SPACER, FEEDER 198
21045-3 RING, RETAIN, EXTERN, 3/16 CRESCENT 172
994969-1 MAGNET, RARE EARTH HIGH ENERGY 166
994970-2 COUNTER, MAGNETIC 164
240638-1 SPRING, FEED FINGER 163
8-21084-1 O-RING, .801 ID, .070 DIA. MAT. 152
2119641-2 FEED CAM, AIR FEED 151
2119798-2 DETENT PIN 145
2079383-8 SCR, BHSC, RoHS (M4 X 16) 144
2168400-5 SHCS, LOW HEAD, RoHS, M4 X 20 143
2119653-2 FEED CAM, POST FEED 142
1-2119656-0 APPLICATOR BASIC ASSEMBLY, SF 141
2119650-1 RAM, ASIAN STYLE, SIDE FEED 140
2119092-2 BOLT, ADJUSTMENT 139
3-23627-7 PIN, RETAIN, GRVD, 3/16 X .854 137
2119799-1 HOLDER, FEED FINGER, AF 136
REF - - SEE NOTE 4 MEMORY CHIP, PROGRAMMED 135
1633743-1 SERVO FEED LATCH ASM 133
1-18028-2 WASHER, FLAT, REG M4 119
REF - - 2119944-1 FEED FINGER ASSEMBLY,SF 117
2119955-1 ASSY, LUBRICATOR, SIDE FEED 113
455888-8 SPACER, CRIMPER 82
2266101 PRINT, APPLICATOR LOG SHEET 72
2119956-1 DOCUMENTATION PACKAGE 71
2119791-9 DEPRESSOR, WIRE 70
2119740-1 TAG IDENTIFICATION 67
2168078-1 SCREW, DRIVE, RH, RoHS, 2 x .188 66
2119793-1 LIMITER, ADJUSTMENT BOLT 63
992763-5 SCR, SET, SOC, CONE POINT, M3 x 4.0 62
5-18022-5 SCR, HEX HD CAP, M4 X 6.0 59
1338685-1 PAWL, FEED 56
1-2168083-0 SCR, SKT HD CAP, RoHS, M4 X 10 53
5018030-1 NUT, HEX, REG, RoHS, M3 52
811242-5 BUMPER, HOLD DOWN 51
690753-2 SPACER, TONKER 50
18023-9 SCR, SKT HD CAP M4 X 6.0 49
2119652-1 FEED CAM, PRE FEED 48
2079383-7 SCR, BHSC, RoHS (M8 X 25) 41
2119645-1 DISC, NUMBERED FA WIRE ADJUSTMENT 40
2119957-1 APPLICATOR SHIM PACK 39
2119644-1 RAM WASHER, PRECISION 38
2-1752356-0 SUPPORT, TERMINAL 34
2079383-5 SCR, BHSC, RoHS (M4 X 20) 33
2161328-1 HEX HEAD, FLANGED, M5 x 8mm LONG 32
1-1320908-0 SPACER, STRIP GUIDE 30
2119959-1 ASSEMBLY, STRIP GUIDE 29
1320928-2 STRIP GUIDE 24
2168083-2 SCR, SKT HD CAP, RoHS, M4 X 8.0 21
1-18028-2 WASHER, FLAT, REG M4 20
2119533-1 STRIPPER, SIDE FEED 19
2119806-1 INSERT, SHEAR 13
3-22280-3 SPRING, COMPRESSION 12
1-356885-4 STOP, SHEAR 11
2119805-1 SHEAR HOLDER, FRONT 10
1803095-1 FLOATING SHEAR, FRONT 9
1803293-2 ANVIL, COMBINATION DEUTSCH STYLE 8
- - - - - 7
- - - - - 6
2119757-8 DEPRESSOR, SHEAR 5
238011-9 BLOCK, CRIMPER SPACER 4
1803019-4 CRIMPER, INSULATION O 3
455888-3 SPACER, CRIMPER 2
2-1633713-6 CRIMPER, WIRE PREMIUM 1

Customer Accessible Production Drawing. Includes dimensions, tolerances, materials, and revision history.

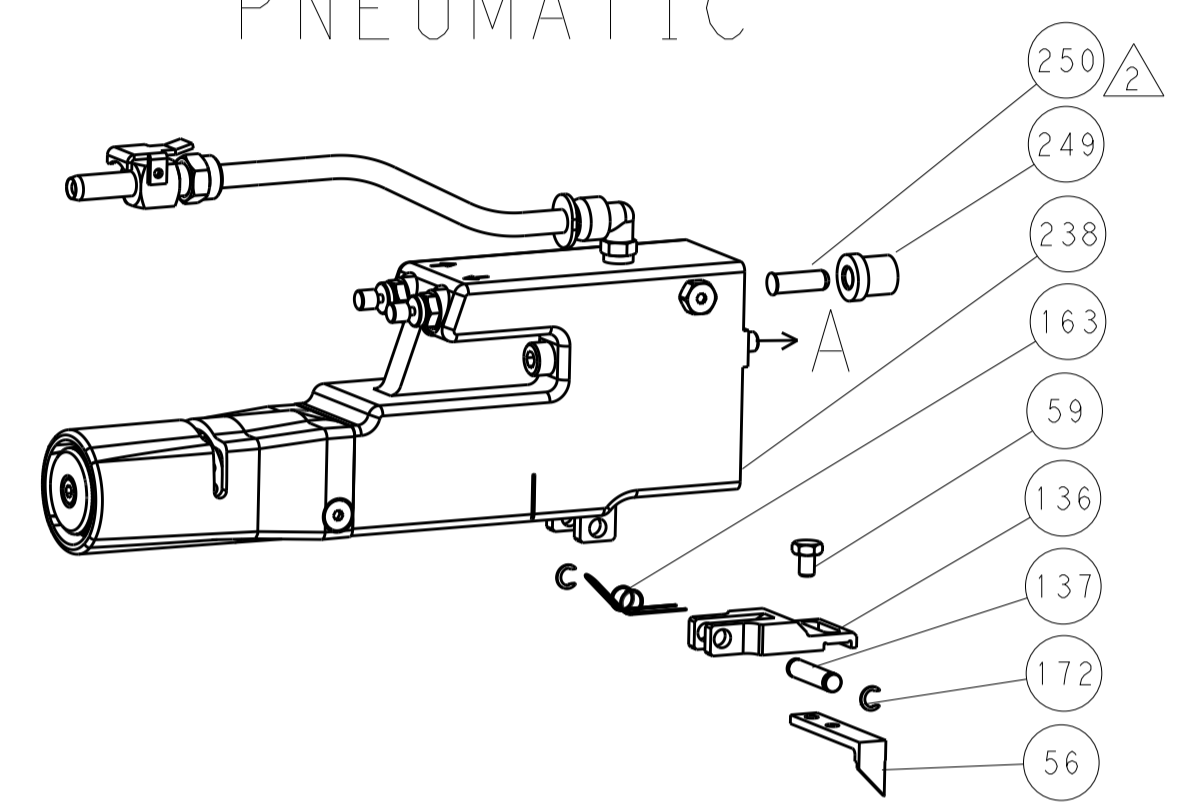


LOC		DIST		REVISIONS			
A	66	P	LTM	DESCRIPTION	DATE	OWN	APVD
		-		SEE SHEET 1			

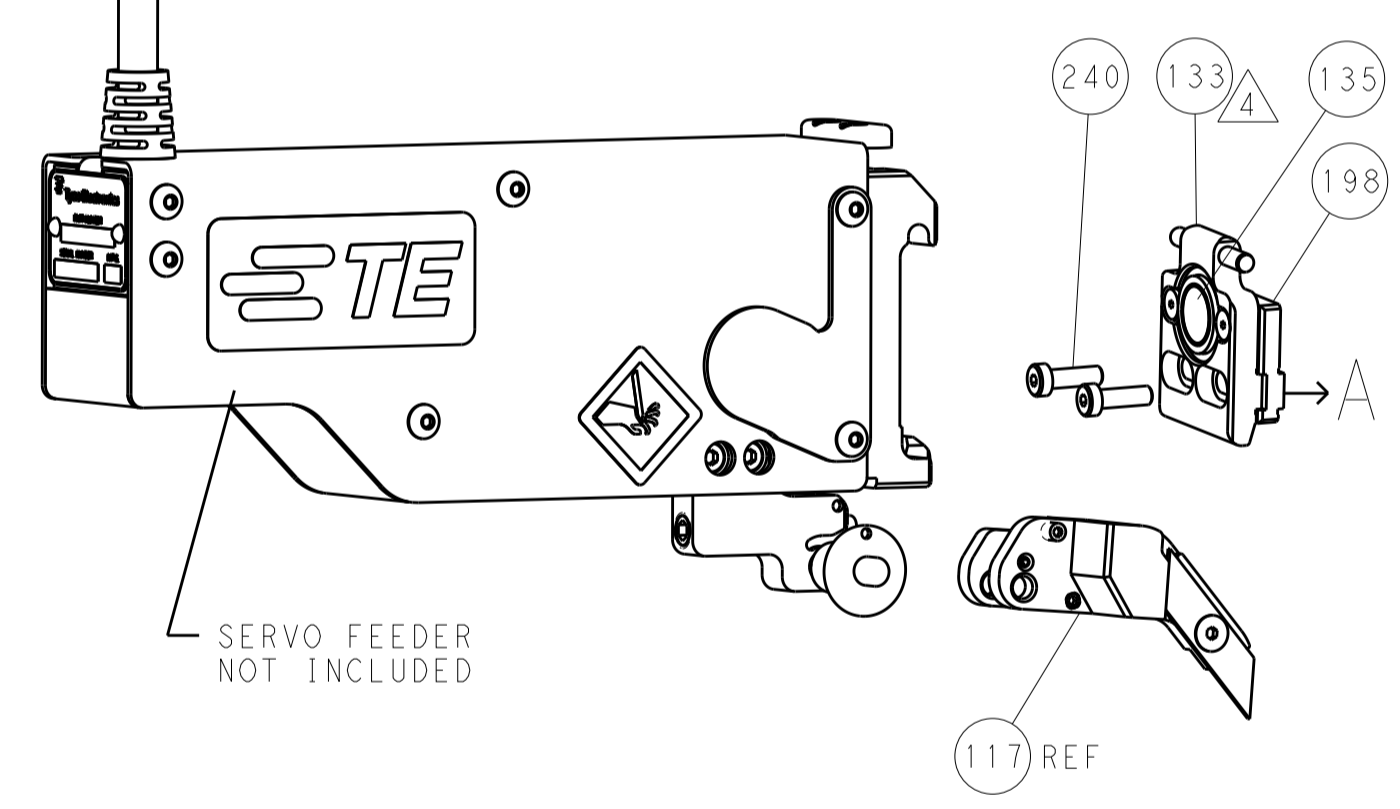
# FEED TYPE MECHANICAL



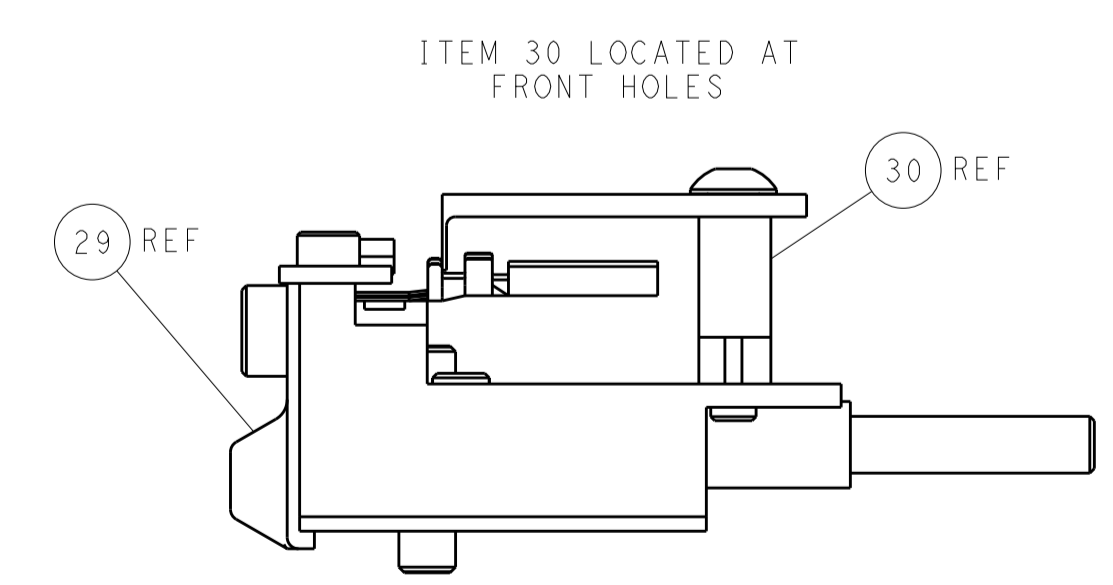
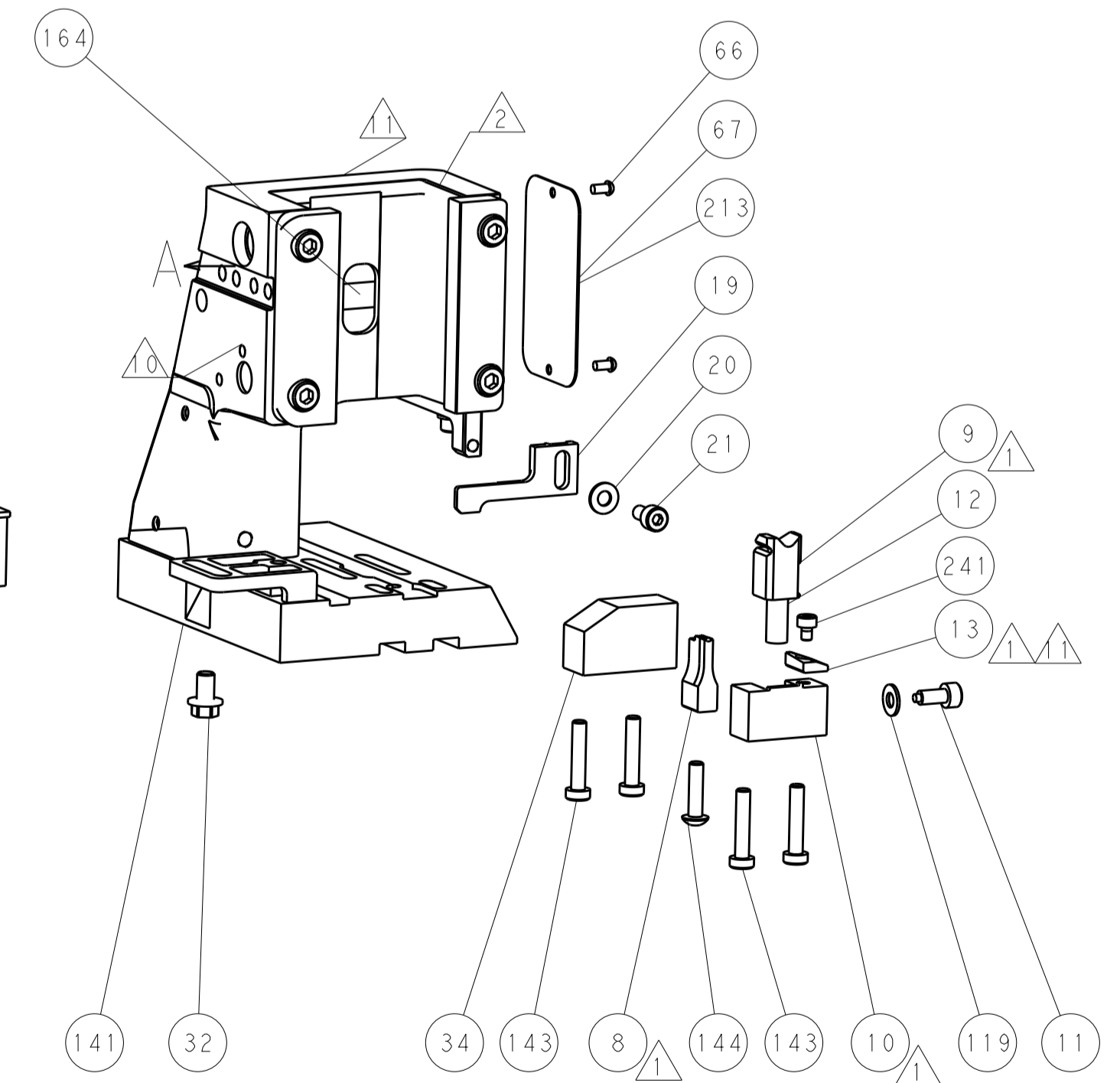
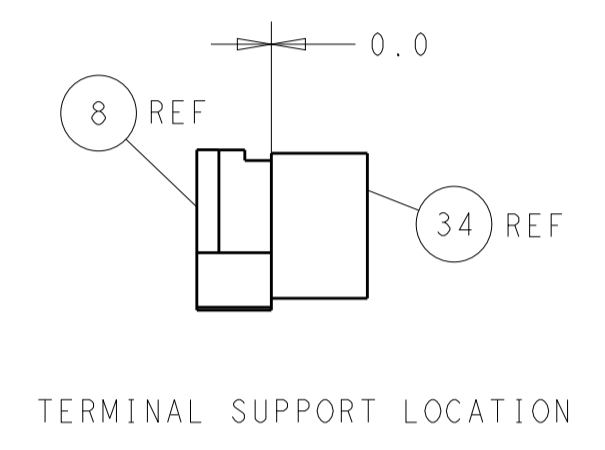
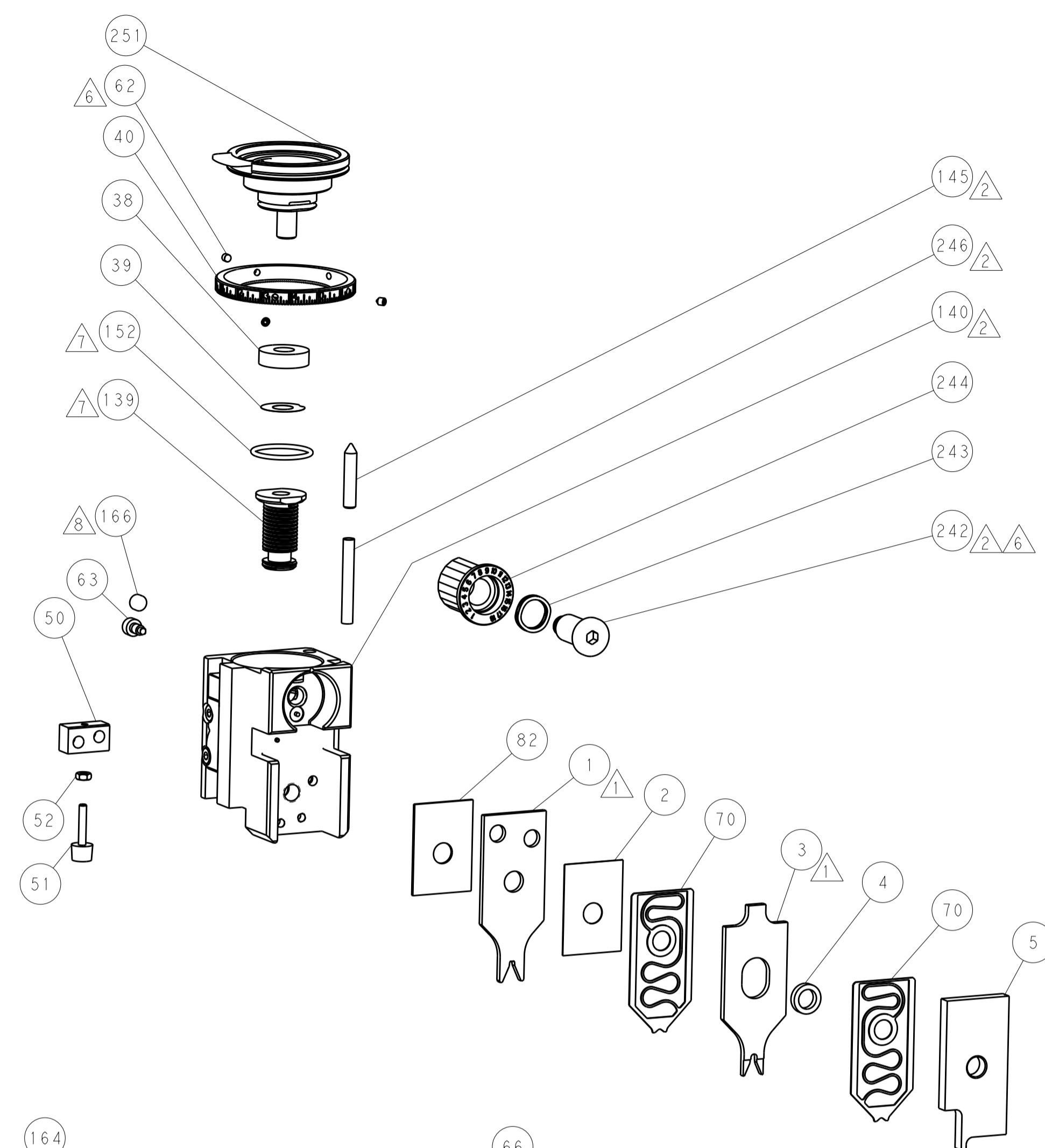
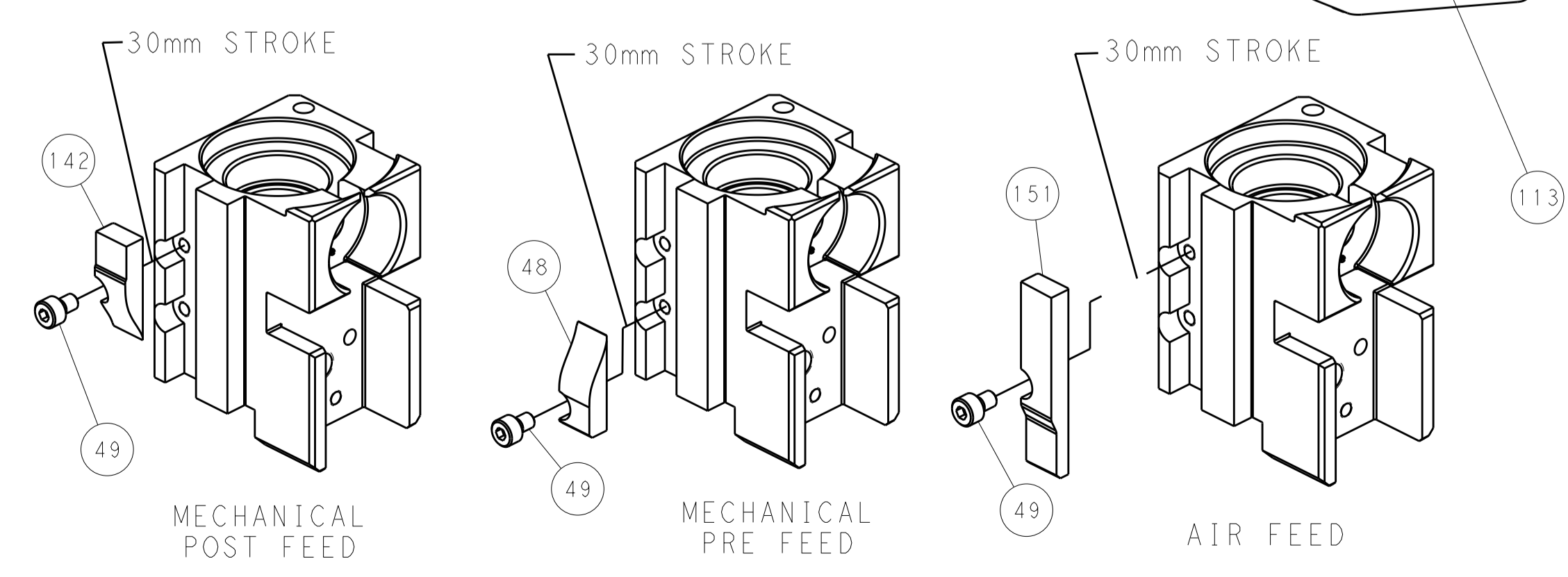
# PNEUMATIC



# SERVO LATCH PLATE



# CAM POSITIONS



**PACIFIC VERSION**  
 Shown on sheets 3 of 4 & 4 of 4  
 (Atlantic version shown on sheets 1 of 4 & 2 of 4)

DIMENSIONS:		TOLERANCES UNLESS OTHERWISE SPECIFIED:		DWG: R. KNEPPER 03-Oct-13		NAME: TE Connectivity	
mm	0 PLC	±		CHK: G. BAILEY 03-Oct-13	Harrisburg, PA 17105-3608		
	1 PLC	±		APVD: M. CLIFFORD 03-Oct-13	Ocean Side Feed		
	2 PLC	±		PRODUCT SPEC			
	3 PLC	±		APPLICATION SPEC			
	4 PLC	±		RESTRICTED TO			
	ANGLES	±		SIZE: CAGE CODE: DRAWING NO: REV: B3			
MATERIAL:	FINISH:			WEIGHT:	A1 00779 ©=2266101		
				Customer Accessible Production Drawing		SCALE: 1:2	SHEET 4 OF 4