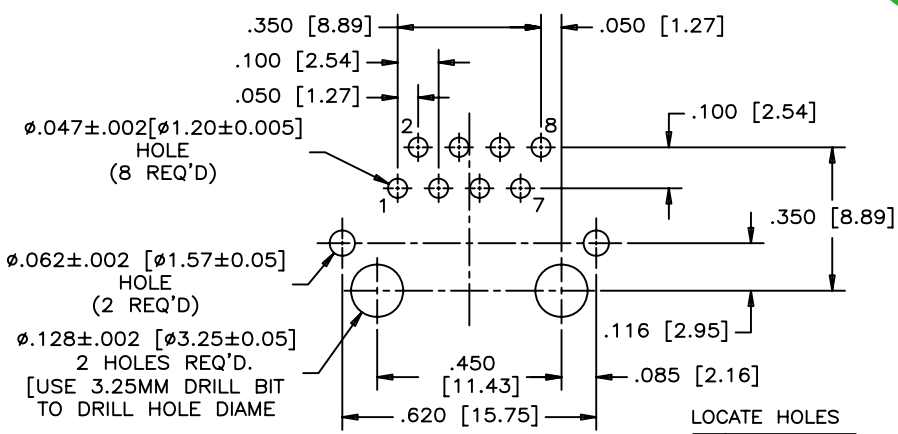
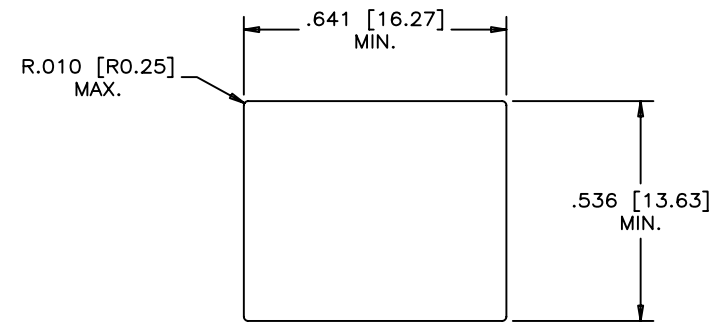
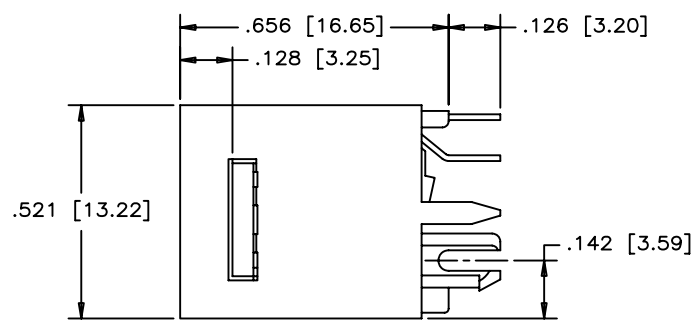
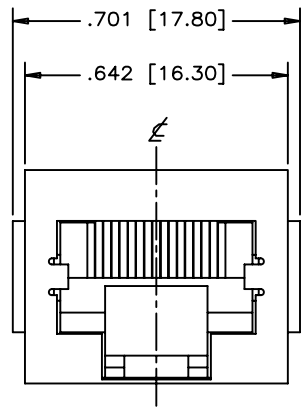


REVISIONS				
SYM	ZONE	ECN, ERN NO.	DATE	APPRD.
B		PROPOSAL	MAY15/06	LCHAN
C		PROPOSAL	JUN19/08	LCHAN



LOCATE HOLES  
 $\varnothing \pm .005 [0.13]$   
 HOLE POSITIONS  
 ARE BASIC

RECOMMENDED P.C.B. LAYOUT  
 (COMPONENT SIDE OF BOARD)

$\varnothing .047 \pm .002 [ø1.20 \pm 0.005]$   
 HOLE  
 (8 REQ'D)

$\varnothing .062 \pm .002 [ø1.57 \pm 0.05]$   
 HOLE  
 (2 REQ'D)

$\varnothing .128 \pm .002 [ø3.25 \pm 0.05]$   
 2 HOLES REQ'D.  
 [USE 3.25MM DRILL BIT  
 TO DRILL HOLE DIAME

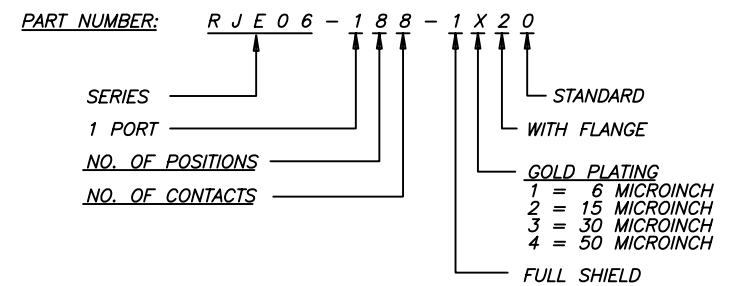
**MATERIALS:**

HOUSING: ENGINEERING THERMOPLASTIC  
 FLAMMABILITY RATING UL94V-0  
 COLOR: BLACK

CONTACTS: PHOSPHOR BRONZE

PLATING: REFER TO PART NUMBER FOR GOLD THICKNESS  
 ON MATING SURFACE  
 50 MICROINCH [1.27 MICRONS] MIN. NICKEL OVERALL  
 100 MICROINCH [2.54 MICRONS] MIN. MATTE-TIN  
 OR GOLD FLASH OVER TAIL

SHIELD: COPPER ALLOY WITH NICKEL PLATED



DRAWN PAULW	DATE MAY15/06
DESIGNED	
CHECKED CHIGOW	MAY15/06
I. E. APPRD.	
Q. A. APPRD.	
DWG. APPRD.	
ENG. REL. NO.	
REF. EAR # A060504	
DIMENSIONS ARE IN INCHES [mm]	CODE ID. NO. 03554

<b>Amphenol Canada Corp.</b>	
TITLE RJE06 SERIES, 8 POSITION 8 CONTACT, VERTICAL MOUNT, WITH SHIELD, AND FLANGE - RoHS COMPLIANT	
DWG	DRAWING NO. P-RJE06-188-1X20
REV.	C
SCALE	WT. _____ SURF. _____ SHEET 1 OF 1

THIS DOCUMENT CONTAINS PROPRIETARY INFORMATION AND SUCH INFORMATION  
 MAY NOT BE DISCLOSED TO OTHERS FOR ANY PURPOSE OR USED FOR MANUFACTURING  
 PURPOSES WITHOUT WRITTEN PERMISSION FROM AMPHENOL CANADA CORP.