

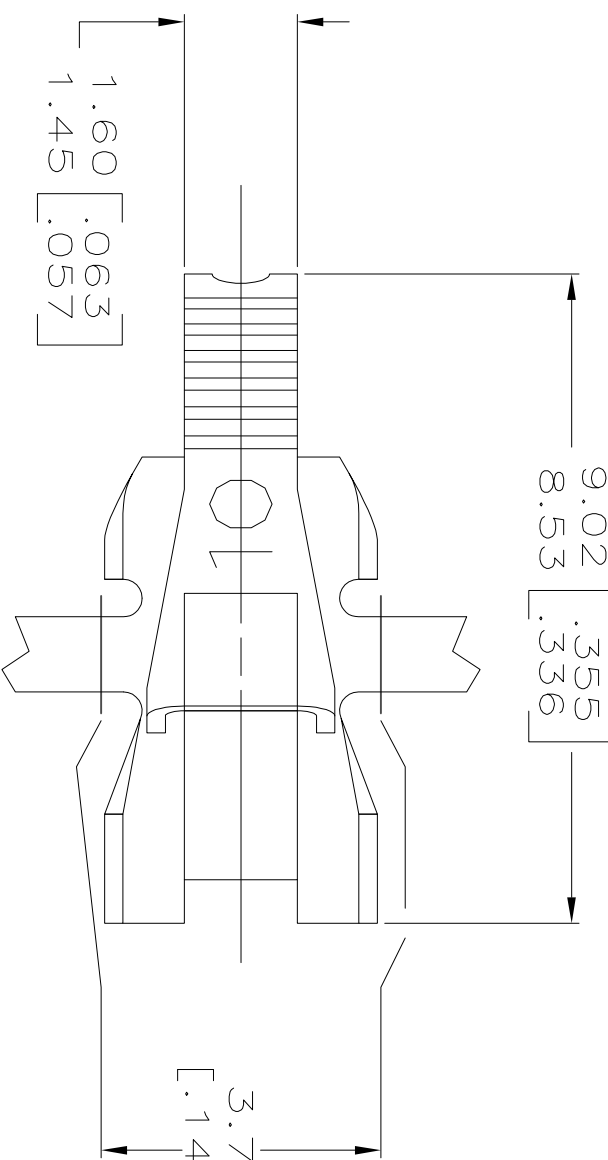
THIS DRAWING IS UNPUBLISHED.
RELEASED FOR PUBLICATION
BY TYCO ELECTRONICS CORPORATION.
ALL RIGHTS RESERVED.

LOO AF 50 DIST

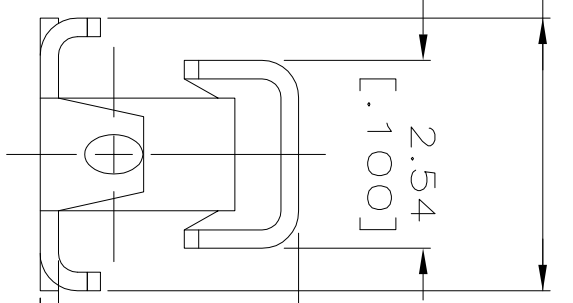
REVISIONS

P	LTR	DESCRIPTION	DATE	DWN	APVD
D2		REVISED PER ECR-12-022060	17FEB13	CX	LL

9.02 [.355]
8.53 [.336]



3.76
3.61
[.148]
[.142]



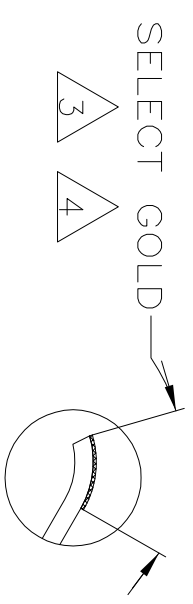
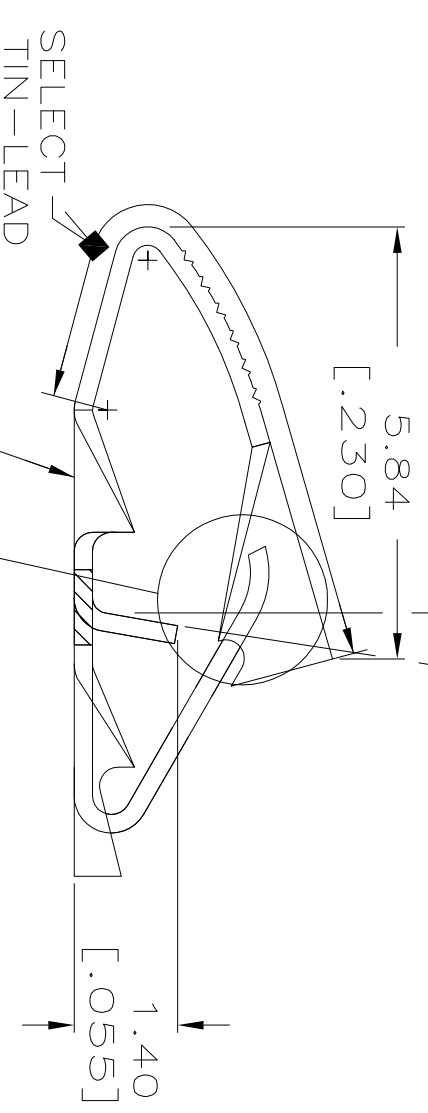
3.68 [.145]
3.30 [.130]
0.254 ± 0.025
[.010 ± .001]

5 PREPRODUCTION - FASR REQUIRED

1 CONTINUOUS STRIP ON REELS WITH TERMINALS LOCATED ON 6.10 ± 0.08 [.240 ± .003] CENTERS. IDENTIFICATION NUMBER 10 FOR MAGNET WIRE RANGE.

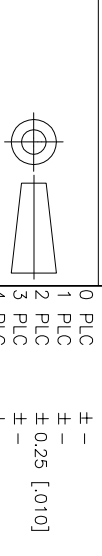
3 0.000762 [.000030] MIN SELECT GOLD ON ONE SIDE AS SHOWN, 0.00127 [.000050] MIN SELECT TIN-LEAD ON BOTH SIDES AS SHOWN

4 0.000762 [.000030] MIN SELECT GOLD ON ONE SIDE AS SHOWN, 0.00127 [.000050] MIN SELECT TIN ON BOTH SIDES AS SHOWN ALL OVER 0.00127 [.000050] MIN NICKEL UNDERPLATE



THIS DRAWING IS A CONTROLLED DOCUMENT.

DIMENSIONS: MM [INCHES]



MATERIAL HO2 BRASS
FINISH SEE TABLE

TOLERANCES UNLESS OTHERWISE SPECIFIED:
0 PLC ± -
1 PLC ± -
2 PLC ± 0.25 [.010]
3 PLC ± -
4 ANGLES ± -

0.05-0.13mm	[#44-#36]	AWG	4	5	63845-2
OBSOLETE	0.05-0.13mm	[#44-#36]	AWG	3	63845-1

COPPER MAGNET WIRE RANGE

FINISH

PART NO.

tyco Electronics
Tyco Electronics Corporation
Harrisburg, Pa 17105-3608

TERMINAL, POKE-IN,
MINI MAG-MATE

DWN	4/MAY/95	R.GRZYBOWSKI
CHK	4/MAY/95	M.S. FEHER
APVD	4/MAY/95	T.L. SHUTTER
PRODUCT SPEC	108-2016	
APPLICATION SPEC	114-2047	
WEIGHT	-	
CUSTOMER DRAWING	A3	00779
SIZE	A3	00779
CAGE CODE	63845	
DRAWING NO	63845	
SCALE	10:1	
SHEET	1	OF 1
REV	D2	