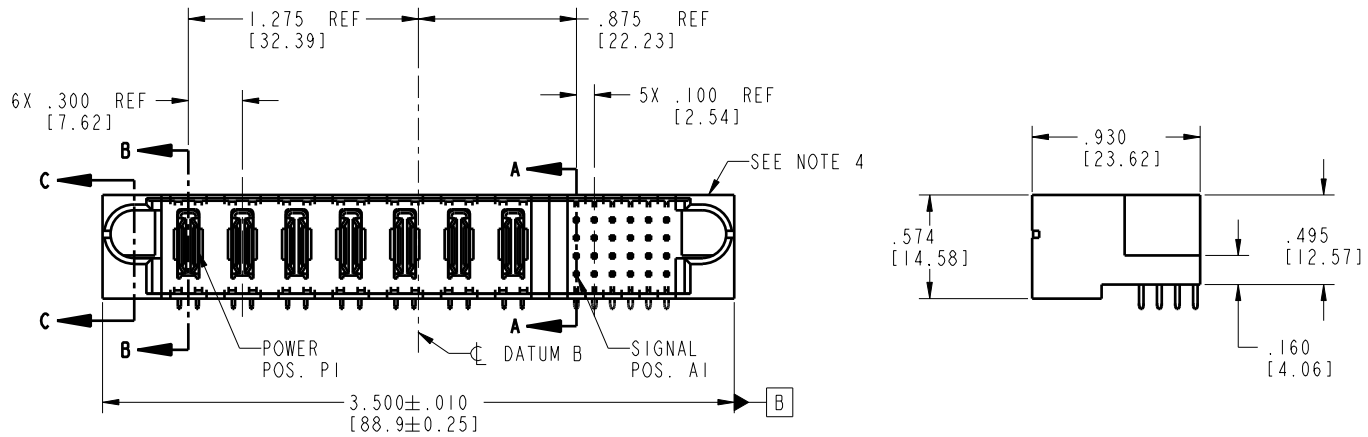


Tous droits strictement réservés. Reproduction ou communication o des liers interdite sous quelque forme que ce soit sans autorisation écrite du propriétaire. Propriété de c FCI. Droits de reproduction FCI.

**FCI**

All rights strictly reserved. Reproduction or issue to third parties in any form without written authority from the proprietor. Property of FCI. Copyright FCI.

PRODUCT NO.	ROWS	POWER							SIGNAL							
		E1	P1	P2	P3	P4	P5	P6	P7	1	2	3	4	5	6	E2
51939-137-- NOTE 3	D C B A															



CODE	DIM "M" MATING LENGTH	CONTACT TYPE
R	.270 [6.86]	SIGNAL
S	.270 [6.86]	SIGNAL
T	.270 [6.86]	SIGNAL
U	.270 [6.86]	SIGNAL
PA	N/A [N/A]	POWER

mat'l code				SEE NOTE 2		tolerances unless otherwise specified		CUSTOMER		<b>FCI</b>		www.fciconnect.com	
lir	ecn no.	dr	date	linear	.XX±.01/0.X±0.3	COPY		projection		title 7P + 24S			
A	V04-0907	TAB	09/09/04		.XXX±.005/0.XX±0.13	COPY				RIGHT ANGLE SOLDER HEADER			
B	V04-0951	TAB	09/24/04	angles	.XXX±.002/0.XXX±0.051	COPY		INCH/MM		product family PwrBlade		code 213	
C	V04-1034	TAB	10/19/04		0° ± 2°	COPY		scale 1:1		size A		dwg no 51939-137	
D	DG06-0013	RYAN	01/12/06	dr	T. BRUNGARD 09/09/04	COPY				sheet 1 of 4			
				engr	M. GRAY 09/09/04	COPY				sheet 1 of 4			
				chr	M. GRAY 09/09/04	COPY				sheet 1 of 4			
				opod	M. GRAY 09/09/04	COPY				sheet 1 of 4			
sheet index	revision	D	D	D	D	COPY				sheet 1 of 4			
	sheet	1	2	3	4	COPY				sheet 1 of 4			

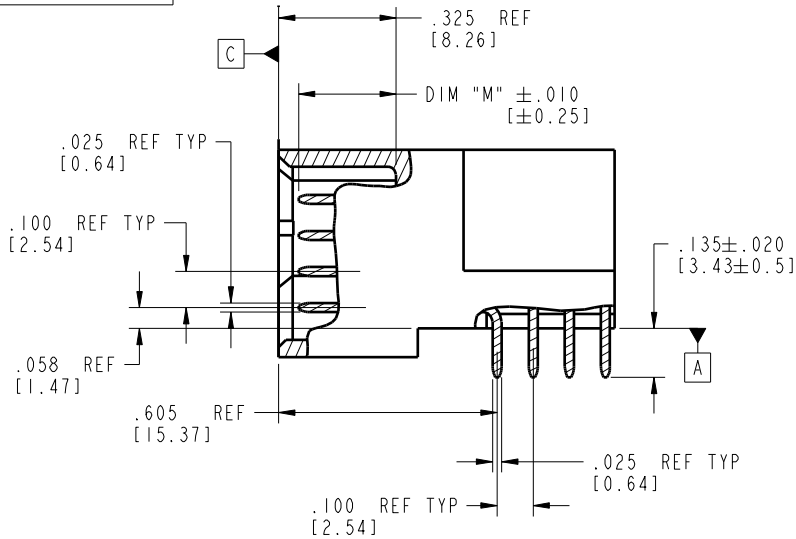
code code 22526

Pro/E

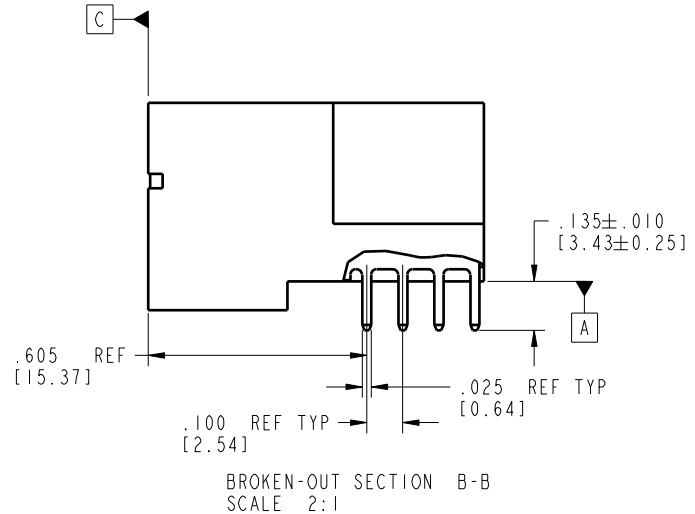
Tous droits strictement réservés. Reproduction ou communication à des tiers interdite sous quelque forme que ce soit sans autorisation écrite du propriétaire. Propriété de c FCI. Droits de reproduction FCI.

All rights strictly reserved. Reproduction or issue to third parties in any form whatsoever is not permitted without written authority from the proprietor. Property of FCI. Copyright FCI.

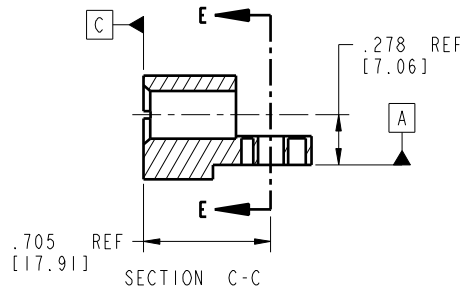
**PRODUCT NUMBER**  
51939-137\_\_  
NOTE 3



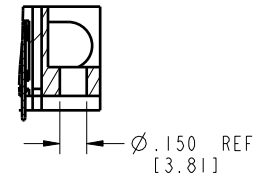
BROKEN-OUT SECTION A-A  
SCALE 2:1



BROKEN-OUT SECTION B-B  
SCALE 2:1



SECTION C-C



PARTIAL SECTION E-E

mat'l code SEE NOTE 2				tolerances unless otherwise specified		CUSTOMER		<b>FCI</b>	
lir	ecn no.	dr	date	linear	.XX±.01/0.X±0.3	COPY		www.fciconnect.com	
D				linear	.XXX±.005/0.XX±0.13	projection		title 7P + 24S	
				linear	.XXX±.002/0.XXX±0.051			RIGHT ANGLE SOLDER HEADER	
				angles	0°±2°	INCH/MM		product family PwrBlade	
				dr	T. BRUNGARD 09/09/04	scale 1:1		code 213	
				eng	M. GRAY 09/09/04	size		sheet 2 of 4	
				chr	M. GRAY 09/09/04	A		51939-137	
				appd	M. GRAY 09/09/04				
sheet index	revision sheet								

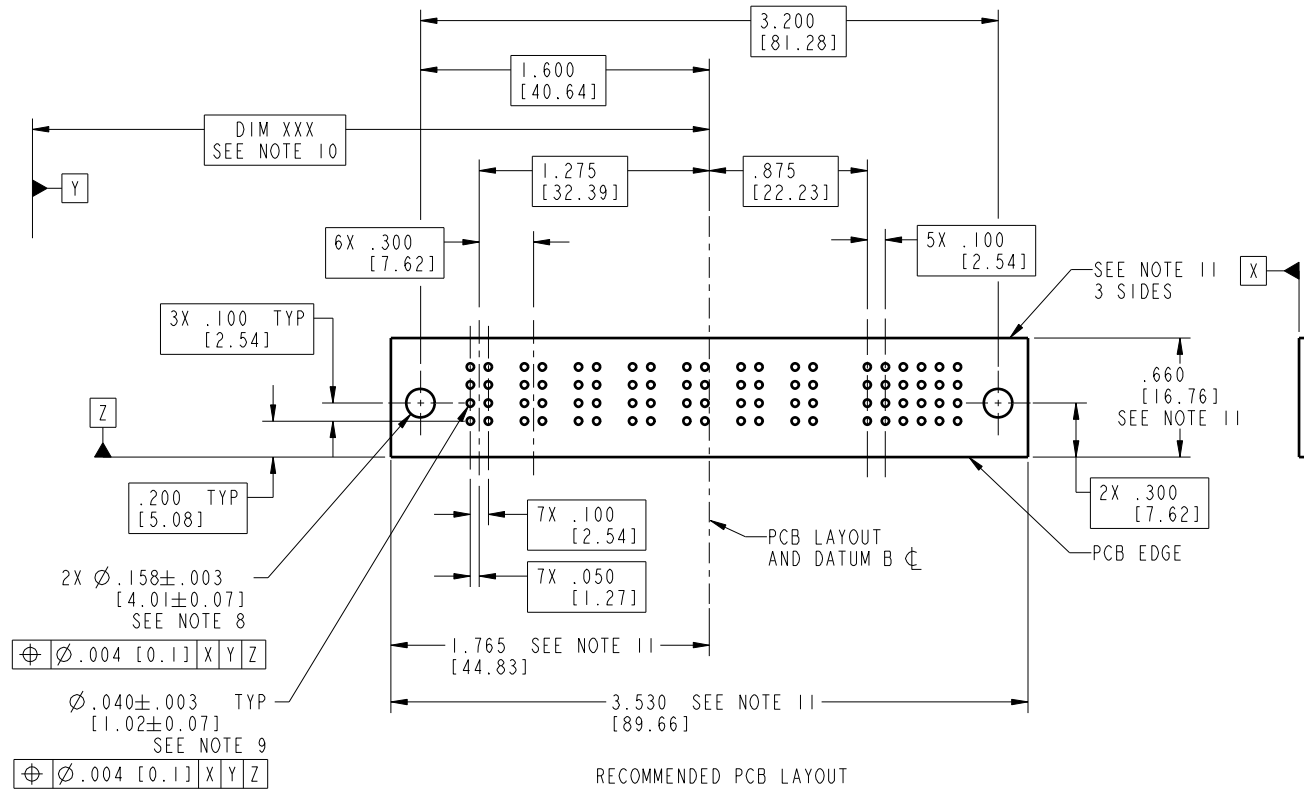
code code 22526

Pro/E

Tous droits strictement réservés. Reproduction ou communication à des tiers interdite sans quelque forme que ce soit sans autorisation écrite du propriétaire. Propriété de c FCI. Droits de reproduction FCI.

All rights strictly reserved. Reproduction or issue to third parties in any form whatsoever is not permitted without written authority from the proprietor. Property of FCI. Copyright FCI.

PRODUCT NUMBER  
51939-137\_\_  
NOTE 3



2X  $\varnothing .158 \pm .003$   
[4.01±0.07]  
SEE NOTE 8

$\varnothing .040 \pm .003$  TYP  
[1.02±0.07]  
SEE NOTE 9

$\varnothing .004$  [0.1] X Y Z

$\varnothing .004$  [0.1] X Y Z

mat'l code				SEE NOTE 2	tolerances unless otherwise specified		CUSTOMER		 www.fciconnect.com
lir	ecm no.	dr	date	linear	.XX±.01/0.X±0.3	COPY		projection	
D				angles	.XXX±.005/0.XX±0.13	INCH/MM		title	
				dr	.XXX±.002/0.XXX±0.051	scale		RIGHT ANGLE SOLDER HEADER	
				engr	0°±2°	1:1		product family	
				chr	T. BRUNGARD 09/09/04			PwrBlade	
				appd	M. GRAY 09/09/04			code	
					M. GRAY 09/09/04			213	
sheet index	revision sheet							size	
								dwg no	
								A	
								51939-137	
								3 of 4	

code code 22526

Tous droits strictement réservés. Reproduction ou communication à des tiers interdite sans quelque forme que ce soit sans autorisation écrite du propriétaire. Propriété de c FCI. Droits de reproduction FCI.



All rights strictly reserved. Reproduction or issue to third parties in any form whatsoever is not permitted without written authority from the proprietor. Property of FCI. Copyright FCI.

1 | 2

3 |

4

**PRODUCT NUMBER**

51939-137\_\_  
NOTE 3

NOTES:

1. DIMENSIONS AND TOLERANCES ARE IN ACCORDANCE WITH ASME Y14.5M, 1994 UNLESS OTHERWISE SPECIFIED.

CONNECTOR NOTES:

- 2. HOUSING MATERIAL: UL 94 V-0 GLASS FILLED  
HIGH-TEMP THERMOPLASTIC  
POWER CONTACT MATERIAL: COPPER ALLOY  
SIGNAL PIN MATERIAL: COPPER ALLOY
- 3. PLATING:  
51939-137; 51939-137LF; 51939-137GLF SEE PRINT 10064183
- 4. MANUFACTURER'S NAME, P/N, AND DATE CODE TO APPEAR ON THIS SURFACE.
- 5. PRODUCT SPECIFICATION GS-12-149.  
APPLICATION SPECIFICATION BUS-20-067.

6. PACKAGED IN TRAYS.

PCB NOTES:

- 7. ALL HOLE DIAMETERS ARE FINISHED HOLE SIZE.
- 8. MOUNTING HOLES, WHERE APPLICABLE, ARE UNPLATED.
- 9.  $\varnothing .0453 \pm .0010$  [1.151  $\pm$  0.025] DRILLED HOLES PLATED WITH .0003 [0.008] MIN SnPb OVER .001 [0.03] TO .003 [0.08] Cu PLATING TO ACHIEVE  $\varnothing .040 \pm .003$  [1.02  $\pm$  .07] HOLE.
- 10. "DIM XXX" TO BE DETERMINED BY THE CUSTOMER.
- 11. CONNECTOR KEEP-OUT ZONE.

mat'l code				SEE NOTE 2	tolerances unless otherwise specified		CUSTOMER		<b>A</b> FCI		www.fciconnect.com	
lir	ecn no.	dr	date	linear	.XX±.01/0.X±0.3	COPY		projection		title		
D					.XXX±.005/0.XX±0.13					7P + 24S		
				angles	.XXX±.0020/0.XXX±0.051					RIGHT ANGLE SOLDER HEADER		
				dr	0° ± 2°			INCH/MM		product family		code
				engr	T. BRUNGARD 09/09/04			scale		PwrBlade		213
				chr	M. GRAY 09/09/04			1:1		size		sheet
				opod	M. GRAY 09/09/04					A		4 of 4
sheet index		revision sheet										

A

A

B

B

1 | 2

Pro/E

3 |

code code 22526

4