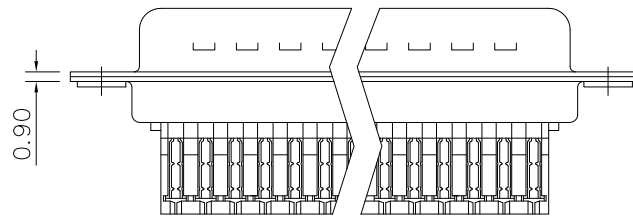
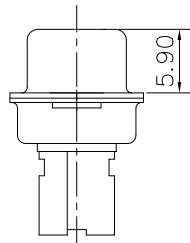
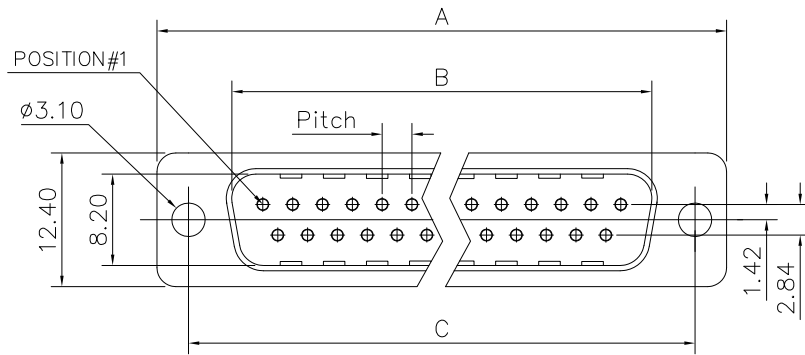


This document is the property of Amphenol Corporation and is delivered on the express condition that it is not to be disclosed, reproduced or used, in whole or in part, for manufacture or sale by anyone other than Amphenol Corporation without its prior consent, & that no right is granted to disclose or to use any information in this document.



Customer drawing

DIM.S SHELL	A	B	C	Pitch
9	30.70	16.80	25.00	2.74
15	39.00	25.10	33.30	2.74
25	52.90	38.80	47.00	2.77
37	69.20	55.30	63.50	2.77

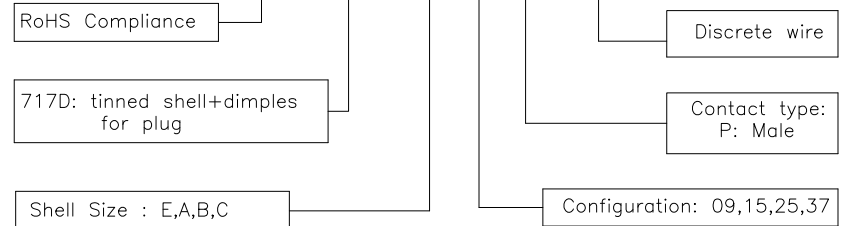
REVISIONS				
SYM	ECN	DESCRIPTION	DATE	APPROVED
1	HK--	First Release Drawing	12/28/07	IP

D-SUB TECHNICAL DATA

SHELL : Steel 2.5um(100u") min tin over 1.25um(50u") min nickel  
 BODY : Glass filled thermoplastic.  
 CONTACTS : Brass.  
 0.1um(4u") min gold over 1.25um(50u") min nickel  
 ELECTRICAL : Voltage rating : 300 V RMS at 50 Hz  
 Current rating 7.5A.  
 Insulation resistance >5000 M Ohms  
 Contact resistance 20 mOhms max.  
 CLIMATIC : Temperature range -55 °C up to 125°C  
 Damp heat 56 days(40 °C-95% HR)  
 MARKING : Amphenol...(Series No.)  
 Commercial reference  
 Manufacturing date

PRODUCT CODE

L 717D X XX P MP10



UNLESS OTHERWISE SPECIFIED TOLERANCES		APPROVAL		DATE
U.S.	METRIC	DRAWN	CHRISTINE.OUS	12/28/07
.X +/-	0.50	CHECKED	LIK.WANG	12/28/07
.XX +/-	0.30	CHECKED		
.XXX +/-	0.20			
FRACTIONS +/-	5'	DRAWING FILE :		
ANGLES +/-		ANGLE OF PROJECTION		
FOR MATERIALS AND FINISHES SEE NOTES		REMOVE SHARP EDGES		
DIMENSIONS		SCALE		
U.S.	INCHES	NONE		
METRIC	MM	SHEET 1 OF 1		

Amphenol		REV.
Amphenol East Asia Limited		1
TITLE		
Machined contacts connector, D series		
SIZE	DRAWING NO.	REV.
A4	C L717DXXXPMP10	1
SCALE	NONE	SHEET 1 OF 1