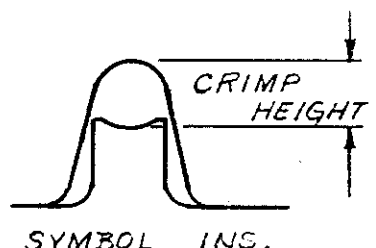
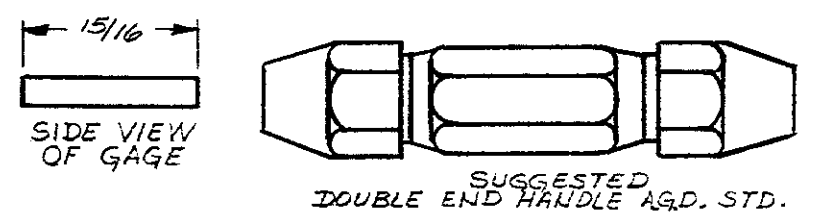
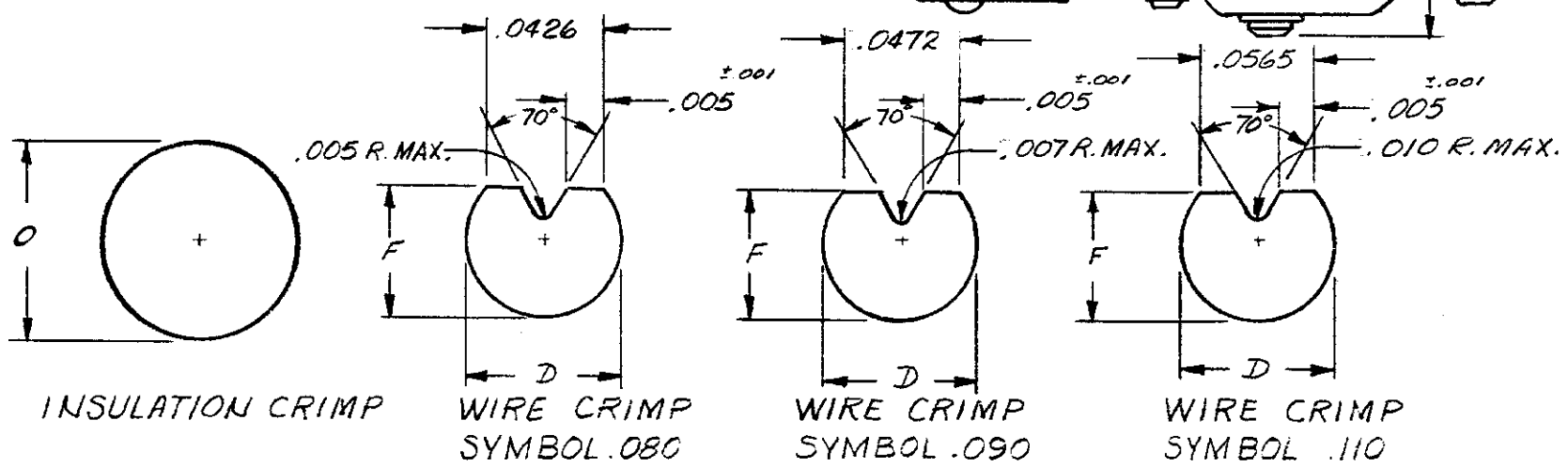
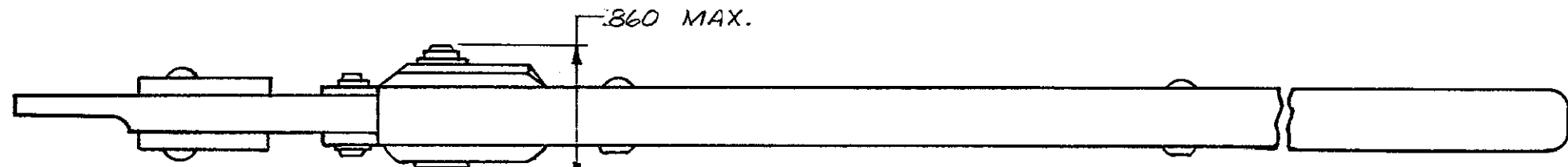


WIRE CRIMP				TERMINAL CRIMP HEIGHT
CRIMP SYMBOL	DIM	GO	NO GO	
.080	F	.0374	.0424	.0512
	D	.0495	.0531	.0396
.090	F	.0514	.0564	.0662
	D	.0622	.0663	.0551
.110	F	.0574	.0624	.0778
	D	.0713	.0752	.0643



INSULATION CRIMP				TERMINAL CRIMP HEIGHT
CRIMP SYMBOL	DIM	GO	NO GO	
INS	O	.0820	.0820	# #



ENLARGED END VIEWS OF GAGES

- 1 CRIMP GAGE DIMENSIONS APPLY WHEN TOOL IS CLOSED OR BOTTOMED BUT NOT UNDER PRESSURE.
- 2 FOR REPLACEMENT OF PARTS SUCH AS PINS AND SNAP RINGS, ORDER REPAIR KIT NO 125218-4
- 3 FOR REPLACEMENT OF PARTS OTHER THAN PINS AND SNAP RINGS, TOOL IS TO BE RETURNED TO AMP INC. WHERE IT WILL BE REPAIR AND ADJUSTED TO INSURE PROPER CRIMP ADJUSTMENT
- 4 FOR TOOL USAGE SEE INSTRUCTIONAL SHEET NO. 1588
- 5 HAND TOOL CAN BE CHECKED BY MEASURING TERMINAL CRIMP HEIGHT.

REVISION RECORD				DATE
LTR	REVISION	DR	CHK	
A-1	LOC M WAS R	JK		2/1/58
A	REV. AND REDRAWN	JK		2/2/58

DWG SIZE	NUMBER	NAME	REMARKS	ITEM NO
©1958 BY AMP INCORPORATED. ALL RIGHTS RESERVED. AMP PRODUCTS COVERED BY PATENTS AND/OR PATENTS PENDING.				
DR D.E. WELLER 11-20-58		MATERIAL AND FINISH MATERIAL - STEEL FINISHED - BLACK OXIDE		AMP AMP INCORPORATED HARRISBURG, PENNA.
CHK J.B. FESLER 11-24-58		WEIGHT - 0LBS 13OZ. CLASS ---+---		
DE E.J. FINK 11-24-58		WIRE - RANGE - INSULATION ---+---		TYPE ---+---
TOLERANCE EXCEPT AS NOTED ± .015 ± 1° 0'		SCALE ---+---	LOC M	NO 46564
NAME DOUBLE ACTION HAND TOOL				
REV A-1				

DIMENSIONS IN INCHES. DO NOT SCALE PRINT

PRINT DIST 361