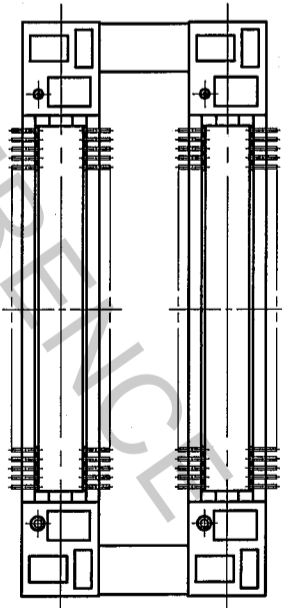
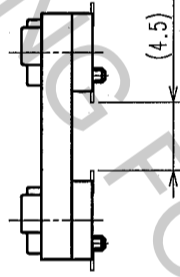
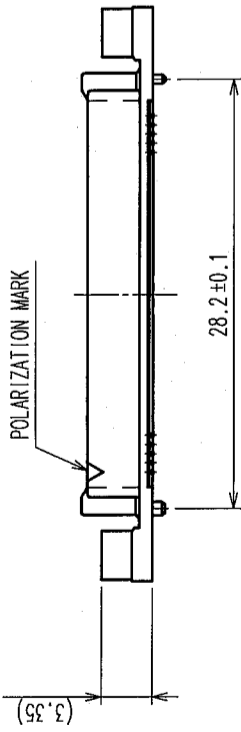
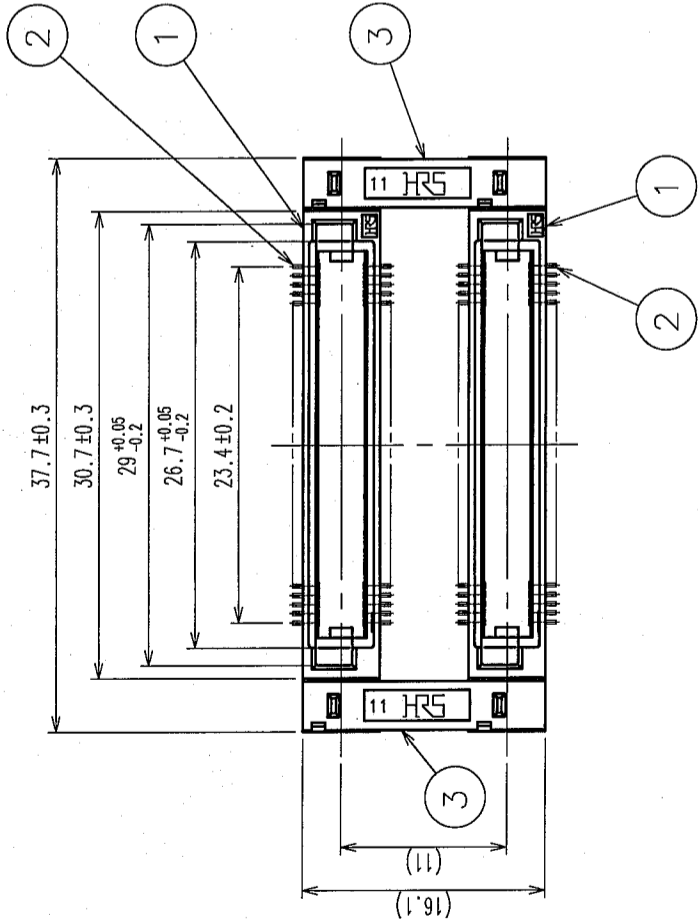
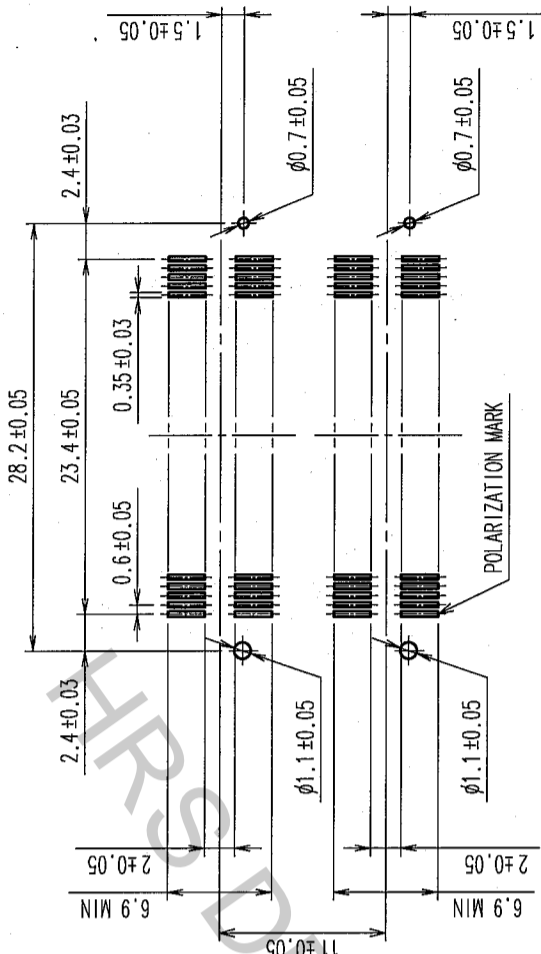


COUNT	DESCRIPTION OF REVISIONS	BY	CHKD	DATE	COUNT	DESCRIPTION OF REVISIONS	BY	CHKD	DATE
△					△				
△					△				
△					△				

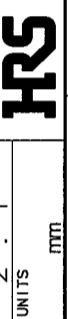
RECOMMENDED LAND PATTERN DIMENSION  
OF PCB (MOUNTING SIDE)



- NOTES
- LEAD CO-PLANARITY SHALL BE 0.1mm MAX.
  - AFTER MOUNTING BOARD, REF.NO.3 SHALL BE REMOVED.
  - FOR MODIFICATION, ETC., PREVENTIVE HOLE FOR SINK MARK MAY BE ADDED DEPENDS ON CIRCUMSTANCES.
  - THE DIMENSIONS IN PARENTHESES ARE FOR REFERENCE.

1, 3	PPS	LIGHT BROWN (UL94V-0)	2	PHOSPHOR BRONZE	CONTACT AREA: GOLD 0.1 $\mu$ m min LEAD AREA: GOLD FLASH UNDER PLATING: NICKEL 0.5 $\mu$ m min
NO.	MATERIAL	FINISH, REMARKS	NO.	MATERIAL	FINISH, REMARKS
CODE NO. (OLD) CL		DRAWN K. NAKAMURA K. NAKAMURA		DESIGNED K. NAKAMURA	CHECKED H. Okawa
DRAWING NO. EDC3-150902-25		PART NO. FX8C-80/80P11-SVJ(71)		APPROVED H. Okawa	
SCALE 2 : 1		DRAWN DATE 06.02.21		DESIGNED DATE 06.02.21	
UNITS mm		DRAWN BY K. NAKAMURA		DESIGNED BY K. NAKAMURA	
		PART NO. FX8C-80/80P11-SVJ(71)		APPROVED DATE 06.02.21	
		CODE NO. CL578-0653-7-71		RELEASED	

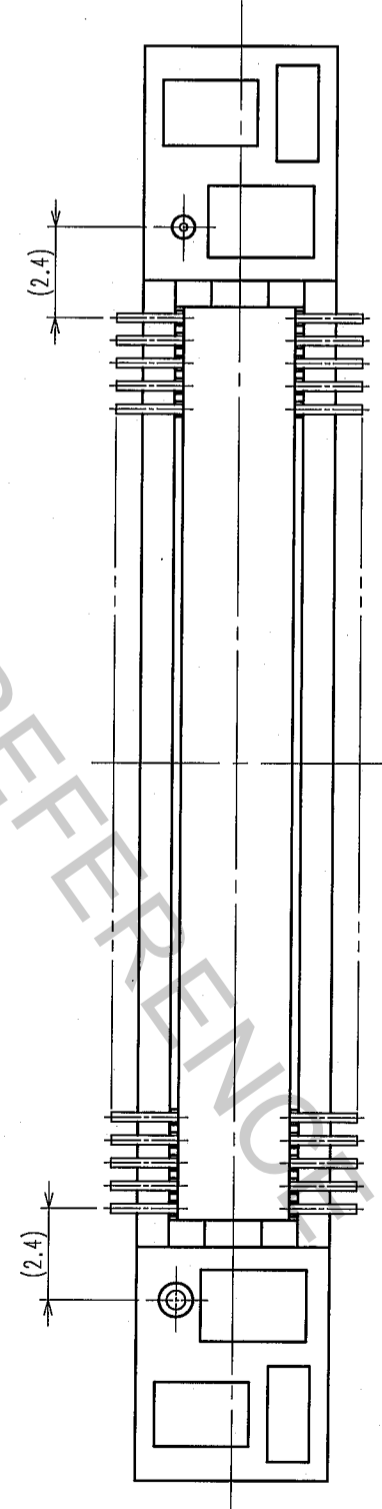
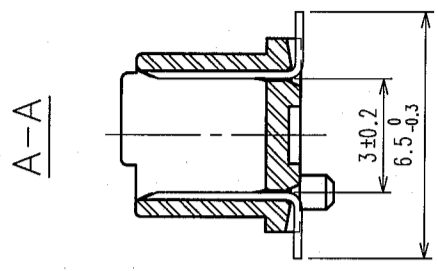
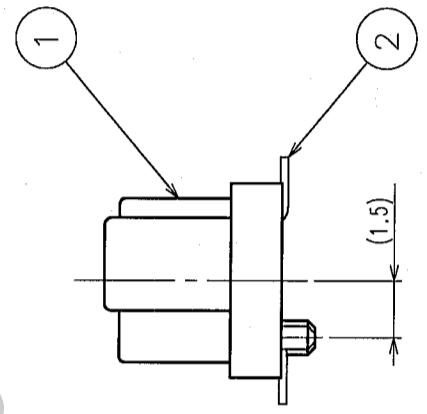
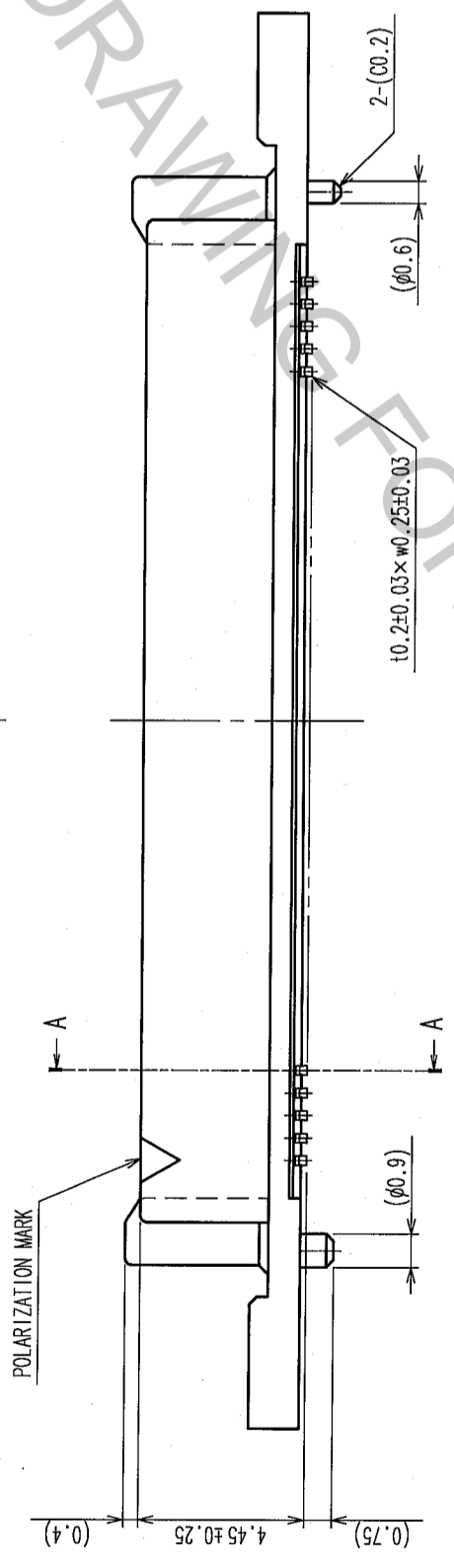
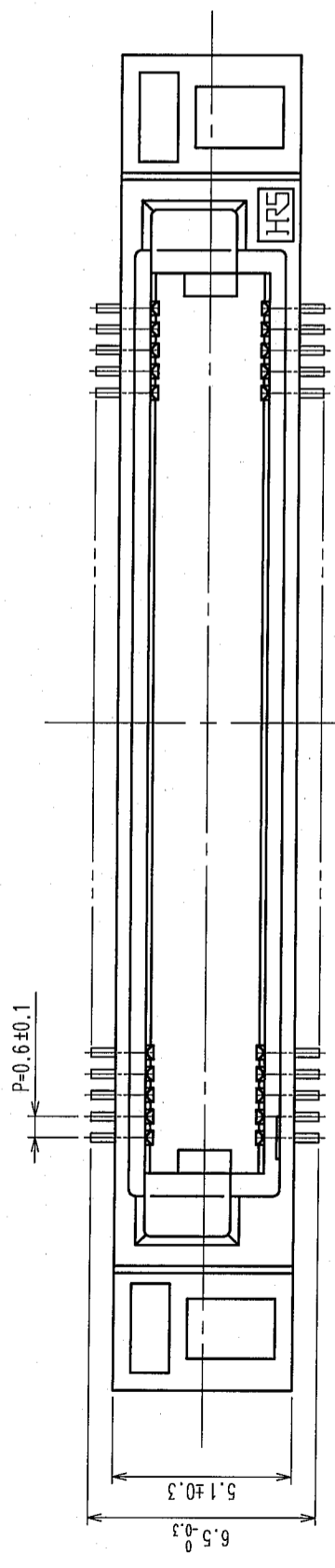
TO	
PCK	



CL578-0653-7-71

DETAIL AFTER REMOVING JOINT

COUNT		DESCRIPTION OF REVISIONS		BY	CHKD	DATE	COUNT	DESCRIPTION OF REVISIONS		BY	CHKD	DATE
△	△						△					
△	△						△					
△	△						△					



NOTE THE DIMENSIONS IN PARENTHESES ARE FOR REFERENCE.

TO	
PCK	

NO.	MATERIAL	FINISH, REMARKS	NO.	MATERIAL	FINISH, REMARKS
CL					
DRAWING NO.		PART NO.		FINISH, REMARKS	
EDC3-150902-25		FX8C-80/80P11-SVJ(71)		APPROVED	
SCALE		CODE NO.		RELEASED	
5 : 1		CL578-0653-7-71		H. Okawa	
UNITS		HIROSE ELECTRIC CO., LTD		06.02.21	
MM				06.02.21	