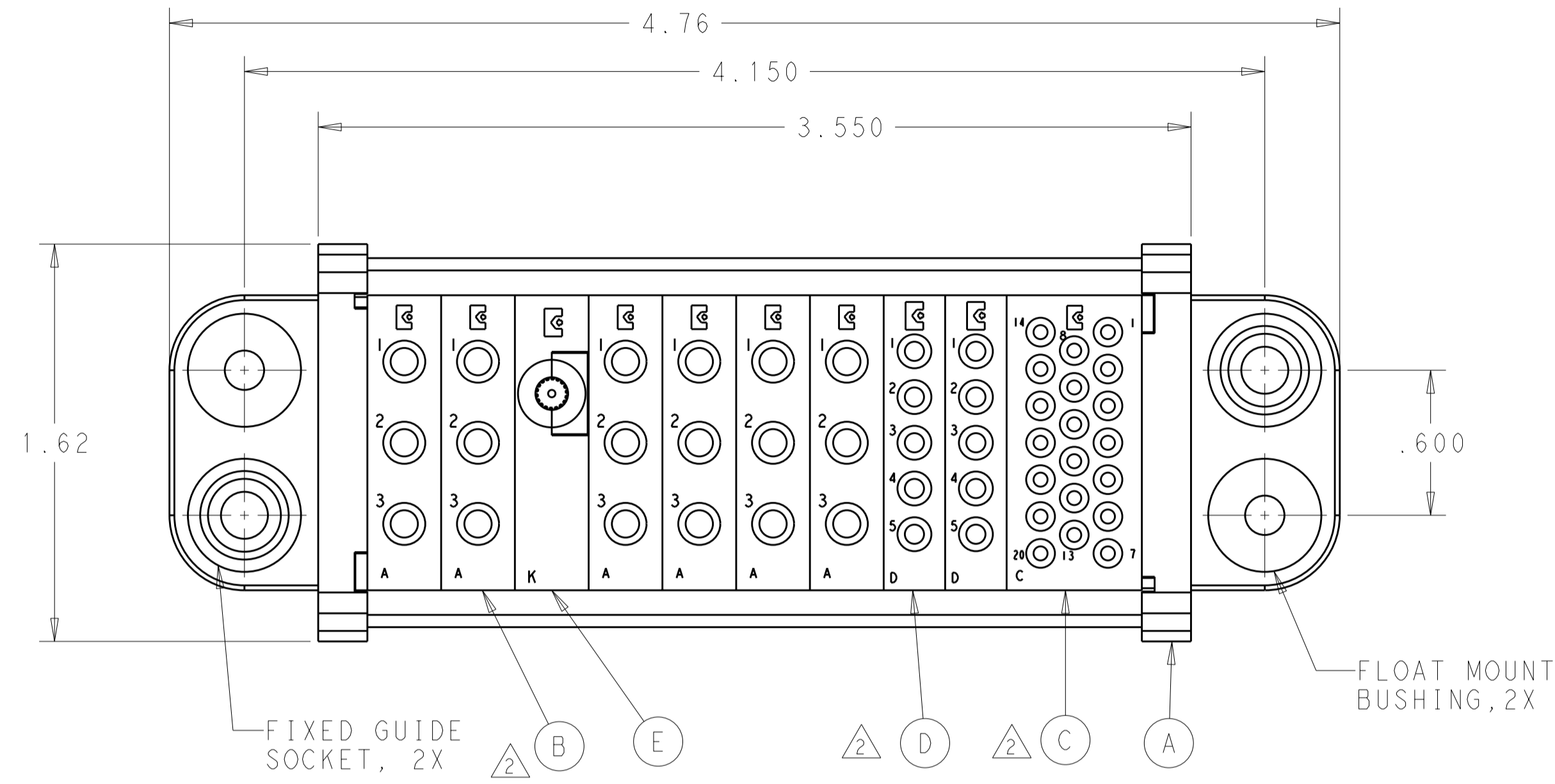


THIS DRAWING IS UNPUBLISHED. RELEASED FOR PUBLICATION 20  
 © COPYRIGHT 20 BY TYCO ELECTRONICS CORPORATION. ALL INTERNATIONAL RIGHTS RESERVED.

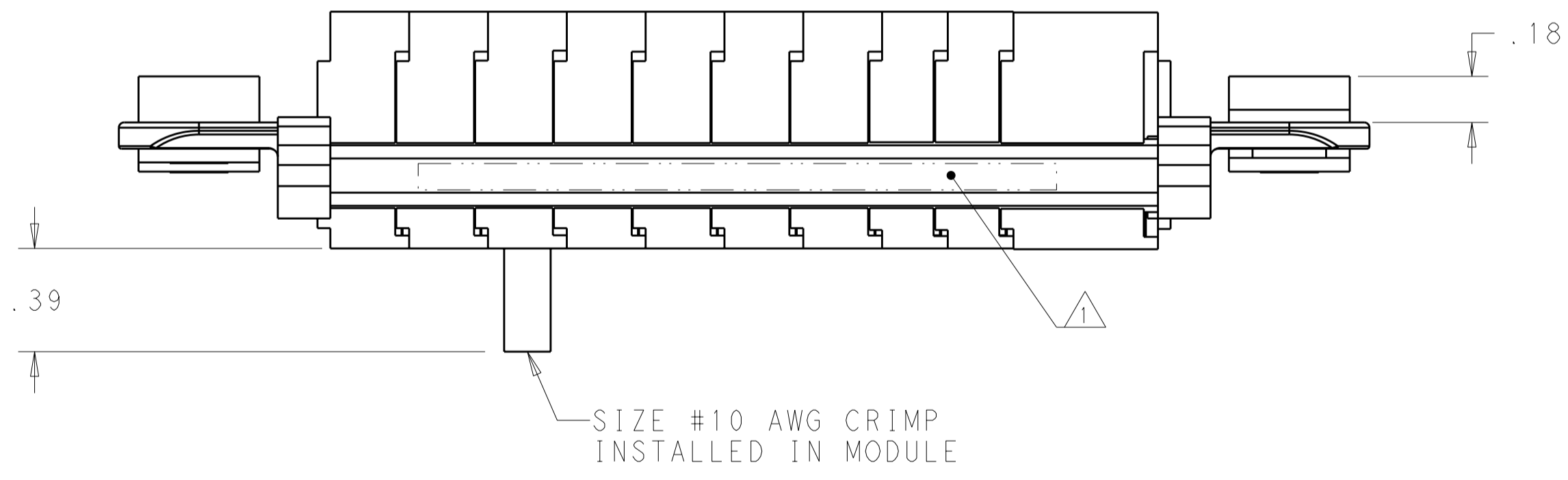
REVISONS				
P	LTR	DESCRIPTION	DATE	DWN APVD
	A	RELEASED	27SEP2010	RG DO



△ ITEMS PROVIDED TO THIS SPECIFICATION TO BE PERMANENTLY IDENTIFIED PER THE FOLLOWING IDENTIFIER:

YEAR 1 WEEK 1  
 TYCO ELECTRONICS P/N DATE CODE (e.g. 0212)  
 XXXXXXXX-X XXXX

- △ MODULES NOTED ARE FOR CRIMP REMOVABLE STYLE CONTACTS. ITEMS F, G AND H WILL BE PACKAGED AND SHIPPED LOOSE WITH THE CONNECTOR ASSEMBLY.
- △ MOUNTING FLANGE BUSHING ACCEPTS 6/32 SCREW (.156 DIA. CLEARANCE HOLE, FLOAT MOUNT) OR 8/32 SCREW (.173 DIA. CLEARANCE HOLE, FIXED MOUNT), USER SUPPLIED.
- 4. CONNECTOR MATES WITH P/N 2085582-1



20	1648325-1	SOCKET CONTACTS, CRIMP, SIZE No. 20	H
10	6648319-1	SOCKET CONTACTS, CRIMP, SIZE No. 16	G
18	6648318-1	SOCKET CONTACTS, CRIMP, SIZE No. 12	F
1	6648476-1	MODULE "K"	E
△ 2	1648469-1	MODULE "D"	D
△ 1	1648468-1	MODULE "C"	C
△ 6	1648466-1	MODULE "A"	B
2	6648252-1	END CAP	A
-1	PART NO.	DESCRIPTION	ITEM NO.

<small>THIS DRAWING IS A CONTROLLED DOCUMENT FOR TYCO ELECTRONICS CORPORATION. IT IS SUBJECT TO CHANGE AND THE CONTROLLING ENGINEERING ORGANIZATION SHOULD BE CONTACTED FOR THE LATEST REVISION.</small>		DWN R.GRZYBOWSKI 23SEP2010 CHK D.ORRIS 23SEP2010 APVD D.ORRIS 23SEP2010	<b>Tyco Electronics</b> Tyco Electronics Corporation Harrisburg, PA 17105-3608
DIMENSIONS: INCHES 	TOLERANCES UNLESS OTHERWISE SPECIFIED: 0 PLC ± 1 PLC ±.02 2 PLC ±.02 3 PLC ±.010 4 PLC ± ANGLES ± FINISH	PRODUCT SPEC - APPLICATION SPEC - WEIGHT -	NAME: SOCKET CONNECTOR DOMINO WITH PANEL CUT-OUT SIZE: A200779 CAGE CODE: C-2085583 DRAWING NO: 2085583 RESTRICTED TO: -
MATERIAL: -		CUSTOMER DRAWING	
		SCALE: 2:1	SHEET 1 OF 2 REV A

4

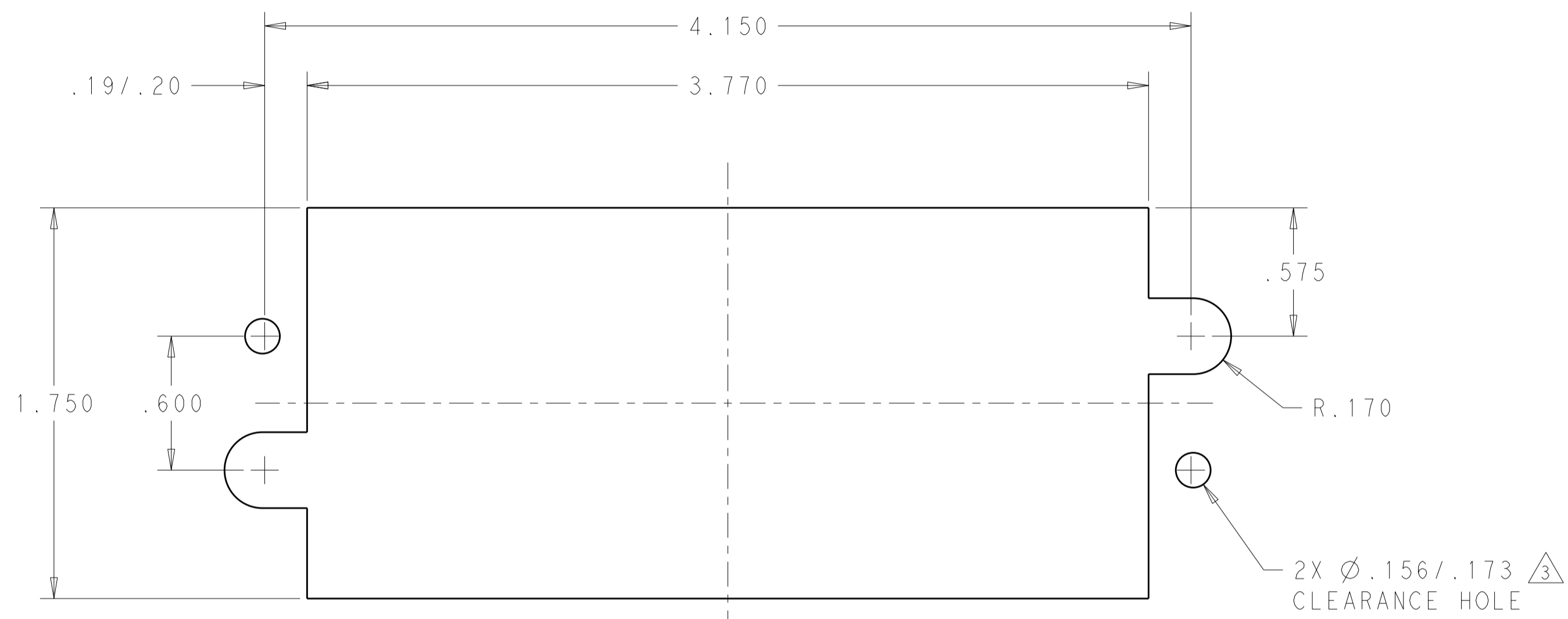
3

2

1

THIS DRAWING IS UNPUBLISHED. RELEASED FOR PUBLICATION 20  
 © COPYRIGHT 20 BY TYCO ELECTRONICS CORPORATION. ALL INTERNATIONAL RIGHTS RESERVED.

LOC	DIST	REVISIONS			
P	LTR	DESCRIPTION	DATE	DWN	APVD
GP	00	-	SEE SHEET 1	-	-



PANEL MOUNT CUT-OUT

<small>THIS DRAWING IS A CONTROLLED DOCUMENT FOR TYCO ELECTRONICS CORPORATION. IT IS SUBJECT TO CHANGE AND THE CONTROLLING ENGINEERING ORGANIZATION SHOULD BE CONTACTED FOR THE LATEST REVISION.</small>		DWN R.GRZYBOWSKI 23SEP2010 CHK D.ORRIS 23SEP2010 APVD D.ORRIS 23SEP2010	Tyco Electronics Corporation Harrisburg, PA 17105-3608
DIMENSIONS: INCHES	TOLERANCES UNLESS OTHERWISE SPECIFIED: 0 PLC ±- 1 PLC ±- 2 PLC ±.02 3 PLC ±.010 4 PLC ±- ANGLES ±- FINISH	PRODUCT SPEC - APPLICATION SPEC - WEIGHT -	NAME SOCKET CONNECTOR DOMINO WITH PANEL CUT-OUT SIZE A200779 CAGE CODE C-2085583 DRAWING NO. 2085583 RESTRICTED TO -
MATERIAL -		CUSTOMER DRAWING	
		SCALE 2:1	SHEET 2 OF 2 REV A