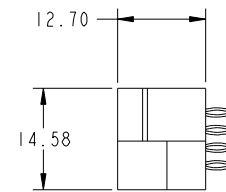
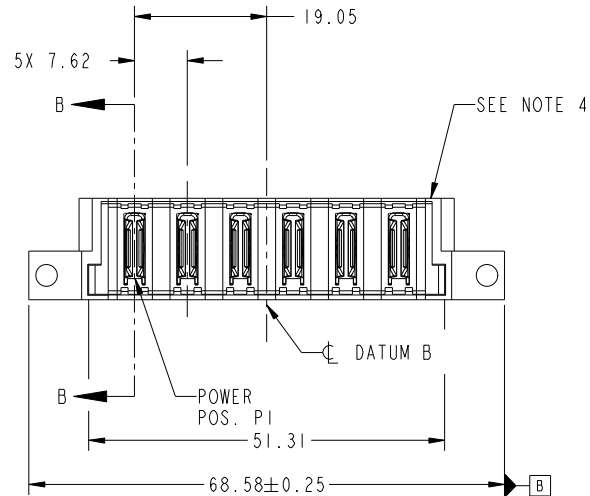
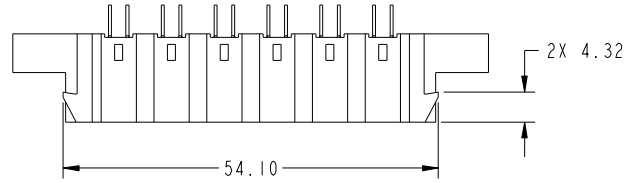
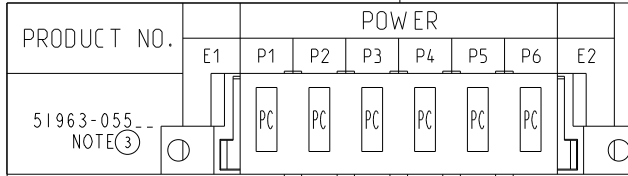


Tous droits strictement reserves. Reproduction ou communication a des tiers interdite sous quelque forme que ce soit sans autorisation écrite du propriétaire. Propriete de c FCI. Droits de reproduction FCI.



All rights strictly reserved. Reproduction or issue to third parties in any form whatever is not permitted without written authority from the proprietor. Property of FCI. Copyright FCI.



CODE	DIM "M" MATING LENGTH	CONTACT TYPE
PC	[N/A]	POWER

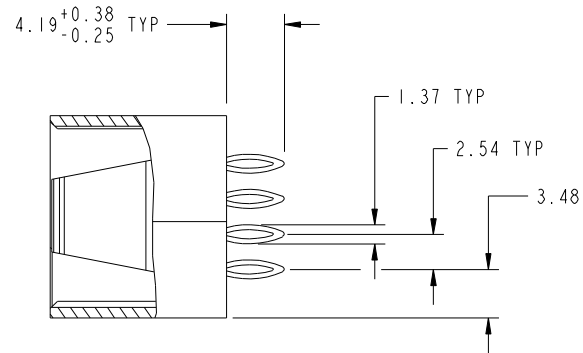
mat'l code				tolerances unless otherwise specified				CUSTOMER		FCI	
ltr	ecn no.	dr	date	linear	0.X ±0.5		COPY		www.fciconnect.com		
A	DG10-0158	HW	4/29/10		0.XX ±0.25		projection		title 6P VERTICAL PRESS FIT HEADER		
					0.XXX ±0.1		MIM		product family PwrBlade code 213		
				angles	0° ±2°		scale 1:1		size dwg no 51963-055 sheet 1 of 4		
				dr	HENRY WANG	4/22/10			cage code 22526		
				enr	HENRY WANG	4/22/10					
				chr	PM ZHENG	4/22/10					
				appd	JOSEPH HSIA	4/22/10					
sheet index	revision sheet	A 1	A 2	A 3	A 4						

Tous droits strictement reserves. Reproduction ou communication a des tiers interdite sous quelque forme que ce soit sans autorisation écrite du propriétaire. Propriete de c FCI. Droits de reproduction FCI.



All rights strictly reserved. Reproduction or issue to third parties in any form whatever is not permitted without written authority from the proprietor. Property of FCI. Copyright FCI.

PRODUCT NUMBER  
51963-055\_\_  
NOTE 3



SECTION B-B  
SCALE 2:1

mat'l code				tolerances unless otherwise specified		CUSTOMER		FCI	
ltr	ecn no.	dr	date	linear	0.X ± 0.5	COPY		www.fciconnect.com	
A					0.XX ± 0.25	projection		title	
				angles	0.XXX ± 0.1			6P VERTICAL PRESS FIT HEADER	
				dr	0° ± 2°			product family	
				enr	HENRY WANG 4/22/10	scale		PwrBlade	
				chr	HENRY WANG 4/22/10	1:1		code	
				appd	PM ZHENG 4/22/10	A		213	
					JOSEPH HSIA 4/22/10			sheet	
sheet index		revision sheet						2 of 4	
								cage code	
								22526	

Pro/E

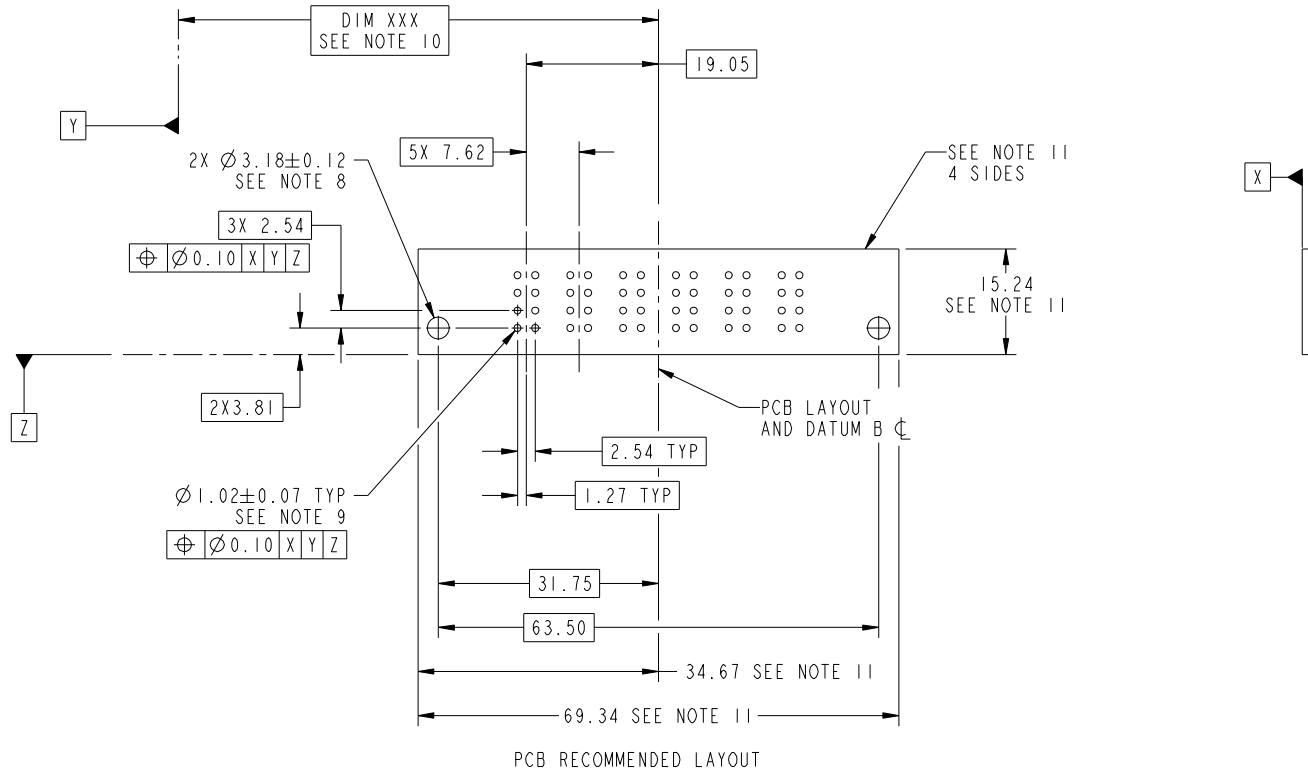
cage code  
22526

Tous droits strictement reserves. Reproduction ou communication a des tiers interdite sous quelque forme que ce soit sans autorisation écrite du propriétaire. Propriete de c FCI. Droits de reproduction FCI.



All rights strictly reserved. Reproduction or issue to third parties in any form whatever is not permitted without written authority from the proprietor. Property of FCI. Copyright FCI.

PRODUCT NUMBER  
51963-055\_\_  
NOTE 3



PCB RECOMMENDED LAYOUT

mat'l code				tolerances unless otherwise specified		CUSTOMER			
ltr	ecn no.	dr	date	linear	0.X ± 0.5	COPY		www.fciconnect.com	
A				angles	0.XX ± 0.25	projection	title 6P		
				dr	0.XXX ± 0.1		VERTICAL PRESS FIT HEADER		
				enr	0° ± 2°	MIM	product family	PwrBlade	code
				chr	HENRY WANG 4/22/10	scale	size	dwg no	213
				appd	HENRY WANG 4/22/10	1:1	A	51963-055	sheet
sheet index	revision sheet				PM ZHENG 4/22/10				3 of 4
					JOSEPH HSIA 4/22/10				

cage code 22526

Pro/E

Tous droits strictement reserves. Reproduction ou communication a des tiers interdite sous quelque forme que ce soit sans autorisation écrite du propriétaire. Propriete de c FCI. Droits de reproduction FCI.



All rights strictly reserved. Reproduction or issue to third parties in any form whatever is not permitted without written authority from the proprietor. Property of FCI. Copyright FCI.

PRODUCT NUMBER  
51963-055\_  
NOTE 3

NOTES:

1. DIMENSIONS AND TOLERANCES ARE IN ACCORDANCE WITH ASME Y14.5M, 1994 UNLESS OTHERWISE SPECIFIED.

CONNECTOR NOTES:

- 2 HOUSING MATERIAL: UL 94 V-0 GLASS FILLED HIGH-TEMP THERMOPLASTIC  
POWER CONTACT MATERIAL: COPPER ALLOY  
SIGNAL PIN MATERIAL: COPPER ALLOY
- 3. PLATING:  
SEE ITEM 3 & 4 IN PRINT 10064183 FOR PLATING SPEC OF 51963-055; 51963-055LF PRESPECTIVELY

4 MANUFACTURER'S NAME, DATE CODE AND OPTIONAL P/N TO APPEAR ON THIS SURFACE. THE P/N CAN BE OMITTED IF THERE IS NOT ENOUGH SPACE ON THIS SURFACE.

5. PRODUCT SPECIFICATION GS-12-149.  
APPLICATION SPECIFICATION BUS-20-067.

6. PACKAGED IN TRAYS.

PCB NOTES:

- 7. ALL HOLE DIAMETERS ARE FINISHED HOLE SIZE.
- 8. MOUNTING HOLES, WHERE APPLICABLE, ARE UNPLATED.

9  $\varnothing 1.151 \pm 0.025$  DRILLED HOLES PLATED WITH  
0.008 MIN SnPb OR Sn OVER .001 [0.03]  
TO 0.08 Cu PLATING TO ACHIEVE  
 $\varnothing 1.02 \pm 0.07$  HOLE.

10 "DIM XXX" TO BE DETERMINED BY THE CUSTOMER.

11 CONNECTOR KEEP-OUT ZONE.

12. FOR PRESS FIT APPLICATION USE FCI CAM TOOL 430169-XXX.

mat'l code				tolerances unless otherwise specified		CUSTOMER		FCI	
ltr	ecr no.	dr	date	linear	0.X ± 0.5	COPY		www.fciconnect.com	
A					0.XX ± 0.25	projection		title	
				angles	0.XXX ± 0.1			6P	
				dr	0° ± 2°	MIM		VERTICAL PRESS FIT HEADER	
				enr	HENRY WANG 4/22/10	product family		PwrBlade	
				chr	HENRY WANG 4/22/10	size		code	
				appd	PM ZHENG 4/22/10	dwg no		213	
					JOSEPH HSIA 4/22/10	scale		sheet	
						1:1		4 of 4	
sheet index	revision sheet					A		51963-055	

cage code 22526

Pro/E