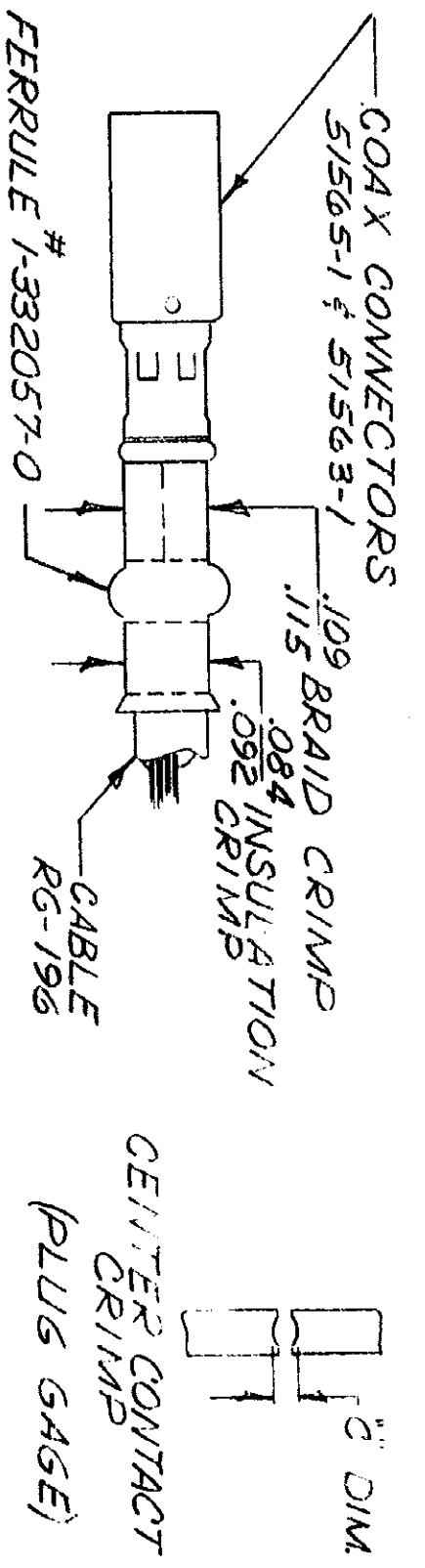
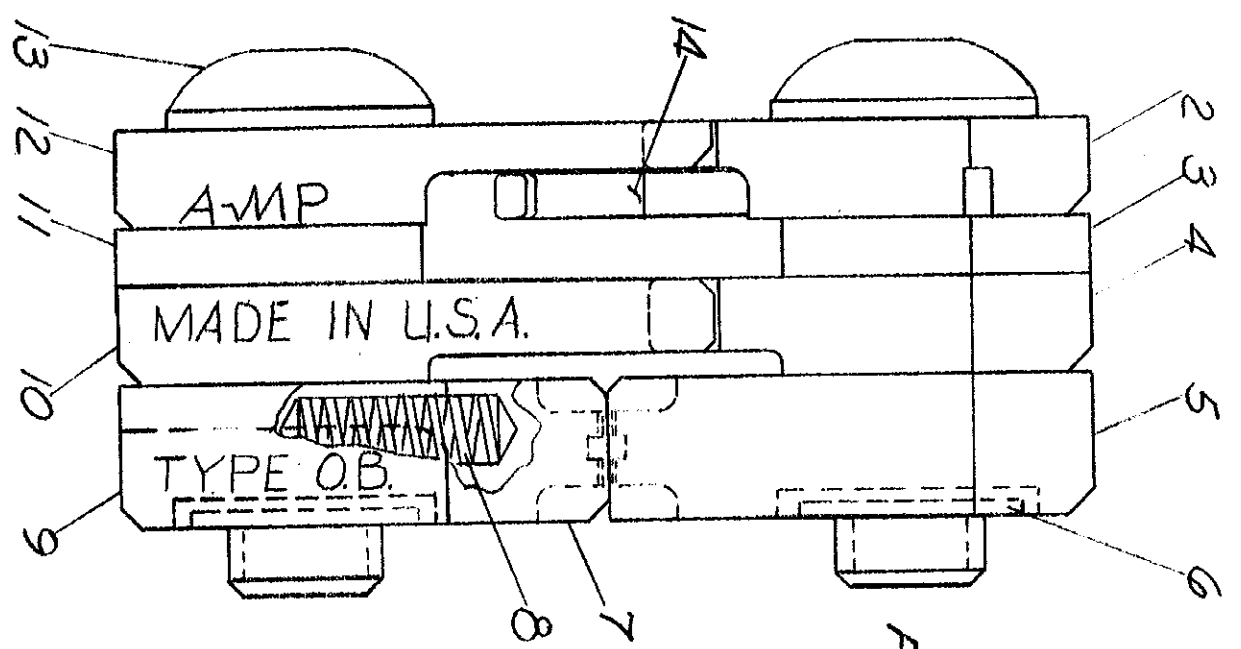
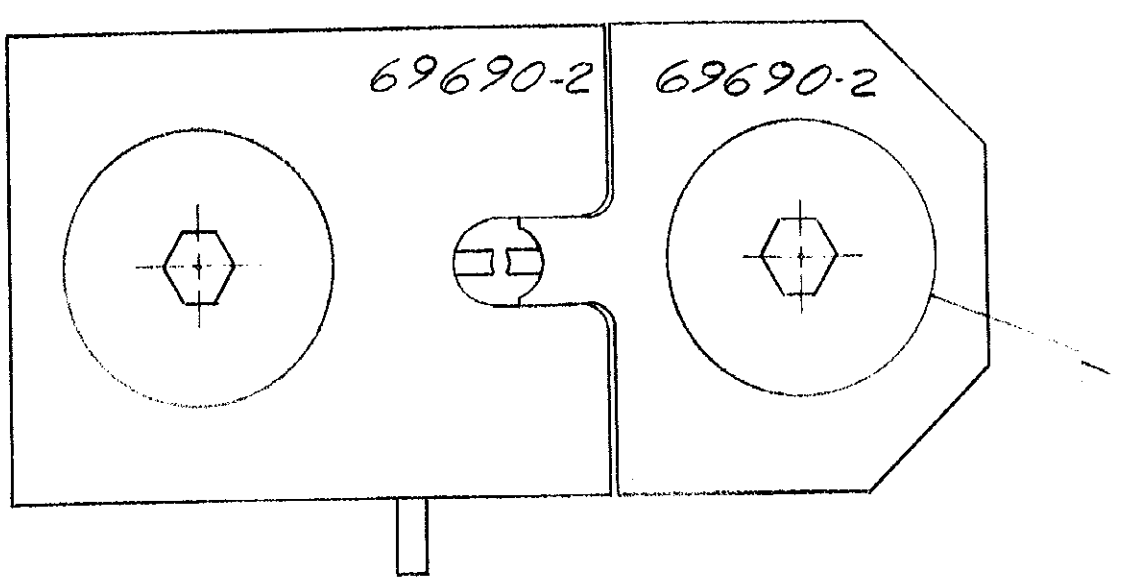


PRINT DIST

DIMENSIONS IN INCHES. DO NOT SCALE PRINT

"C" DIM	NO 60
	.013
	.017



METHOD OF GAGING CRIMP DIMENSIONS
THE CRIMP DIMS APPLY ONLY TO THE ABOVE
COMBINATIONS, ON A CRIMPED PRODUCT.

SUPERSEDED BY 1.5. 2024-3

1	306493-2	EJECTOR	14
1	1-306593-4	SCREW-SPECIAL	13
1	306740-2	INDENTER-INSULATION	12
1	306192-7	SPACER-LOWER	11
1	306742	INDENTER-BRAID	10
1	306543-1	BARREL-BLOCK	9
2	305182	SPRING	8
1	306544-8	INSERT-BARREL-LOWER	7
2	1-21046-3	RING-RETAINING	6
1	306738-2	INSERT-BARREL-UPPER	5
1	306741	ANVIL-BRAID	4
1	1-306191-0	SPACER-UPPER	3
1	306739-2	ANVIL-INSULATION	2
1	7-306131-2	SCREW-SPECIAL	1

REV	DESCRIPTION	DATE	BY	CHK	DR
D	CHG BY 1.5. 2024-3	5/6/22	PL		
C1	REVISED	4-17-20	PL		
C	REVISED	6-26-20	BS		
B	REVISED	3-12-20	BS		
A	REVISED	11-24-19	PL		

NUMBER	69690-2
DESCRIPTION	

DR	B. Bergfeld	2-1-66
CHK	J. J. Hughes	2-2-66

REQUIRED PER ASSEMBLY

AMP PRODUCTS COVERED BY PATENTS AND/OR PATENTS PENDING.

MATERIAL AND FINISH

WIRE - RANGE - INSULATION

RG 196

SCALE

4-1

LOC

M

NO

69690-2

REV

D

NAME

DIE ASSEMBLY



CUSTOMER COPY REFERENCE ONLY