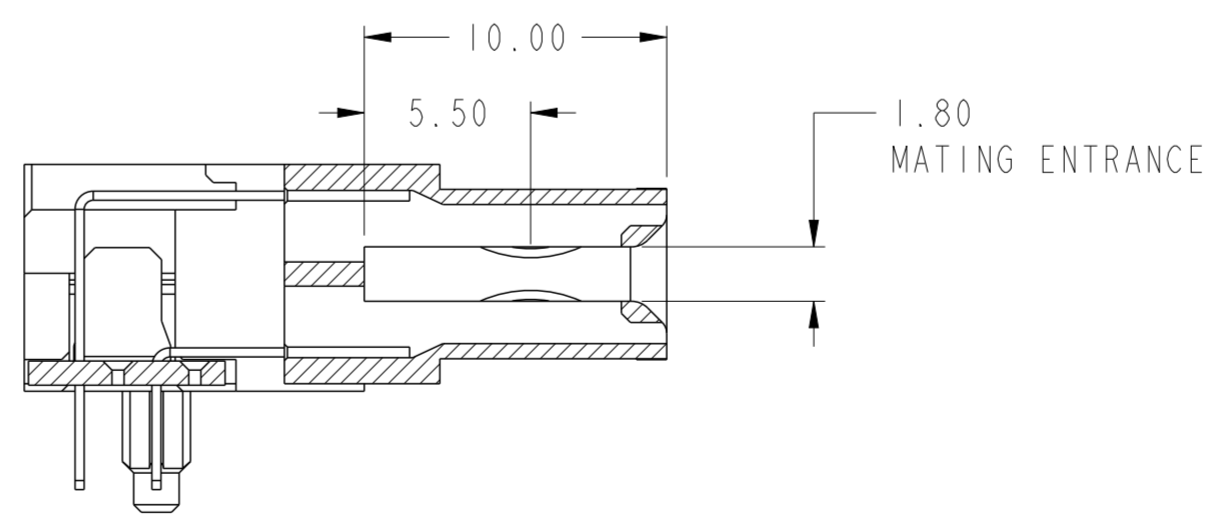


SECTION A-A
SCALE 4:1



SECTION B-B
SCALE 4:1

spec ref	-	dr	Eric Jiang	2012/12/25	projection	MM	size	A2	scale	4:1
tolerance std	ISO 406 ISO 1101	eng	Sunny2 Liu	2016/05/06			ecn no	ELX-DG-24036-1	rel level	Released
TOLERANCES UNLESS OTHERWISE SPECIFIED		chr	Terris Liu	2016/05/20						
surface	linear	0.X	±0.5	0.XX	±0.25	0.XXX	±0.10	angular	0°	±2°
ISO 1302										
		Amphenol FCI			Product - Customer Drw		sheet 1 of 4			

PDS: Rev :B

STATUS:Released

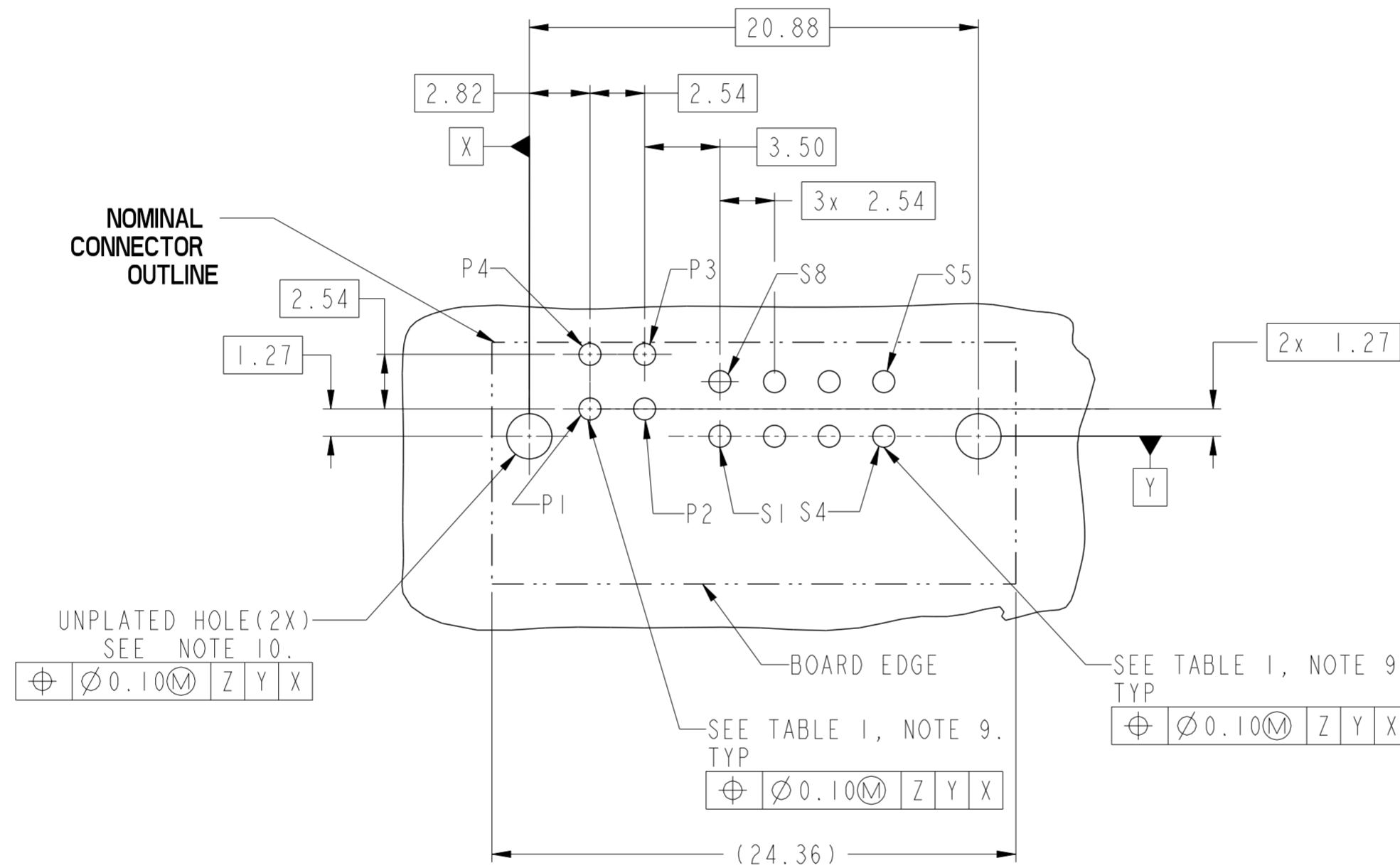
Printed: May 24, 2016

Amphenol FCI

© 2016 AFCI

TABLE 1 (HPCE / SOLDER TAILS)
PLATED THROUGH-HOLE REQUIREMENTS

CONTACT TYPE	TOP LAYER DESCRIPTION	DRILLED HOLE DIAMETER	COPPER THICKNESS	TIN-LEAD THICKNESS	TIN THICKNESS	FINISHED HOLE DIAMETER
		POWER & SIGNAL	TIN-LEAD	1.10-1.16 (1.15 DRILL)	0.025 - 0.050	0.005 - 0.015
	IMMERSION TIN	1.10-1.16 (1.15 DRILL)	0.025 - 0.050	--	0.9 - 1.5um	0.94 - 1.10
	COPPER (SEE NOTE 8)	1.10-1.16 (1.15 DRILL)	0.025 - 0.050	--	--	0.94 - 1.10



RECOMMENDED PCB LAYOUT

spec ref	-	dr	Eric Jiang	2012/12/25	projection	MM	size	A2	scale	4:1
tolerance std	ISO 406 ISO 1101	eng	Sunny2 Liu	2016/05/06			ecn no	ELX-DG-24036-1		
TOLERANCES UNLESS OTHERWISE SPECIFIED		chr	Terris Liu	2016/05/20				rel level	Released	
surface	ISO 1302	appr	Pei-Ming Zheng	2016/05/24	product family	R/A REC 4P+16S		dwg no	10123844	
	linear	Amphenol FCI		HIGH POWER CARD EDGE		rev	B			
	angular	0°	±2°		cat. no.	Product - Customer Drw		sheet 2 of 4		

Amphenol FCI

© 2016 APCI

A

B

C

D

E

F

A

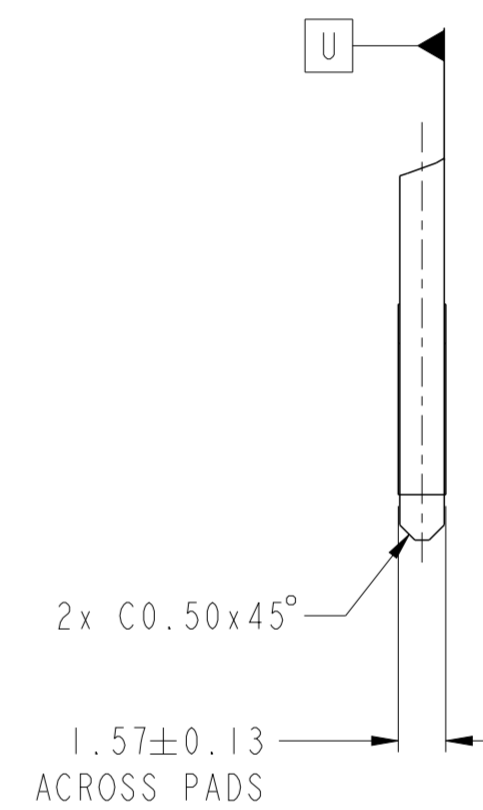
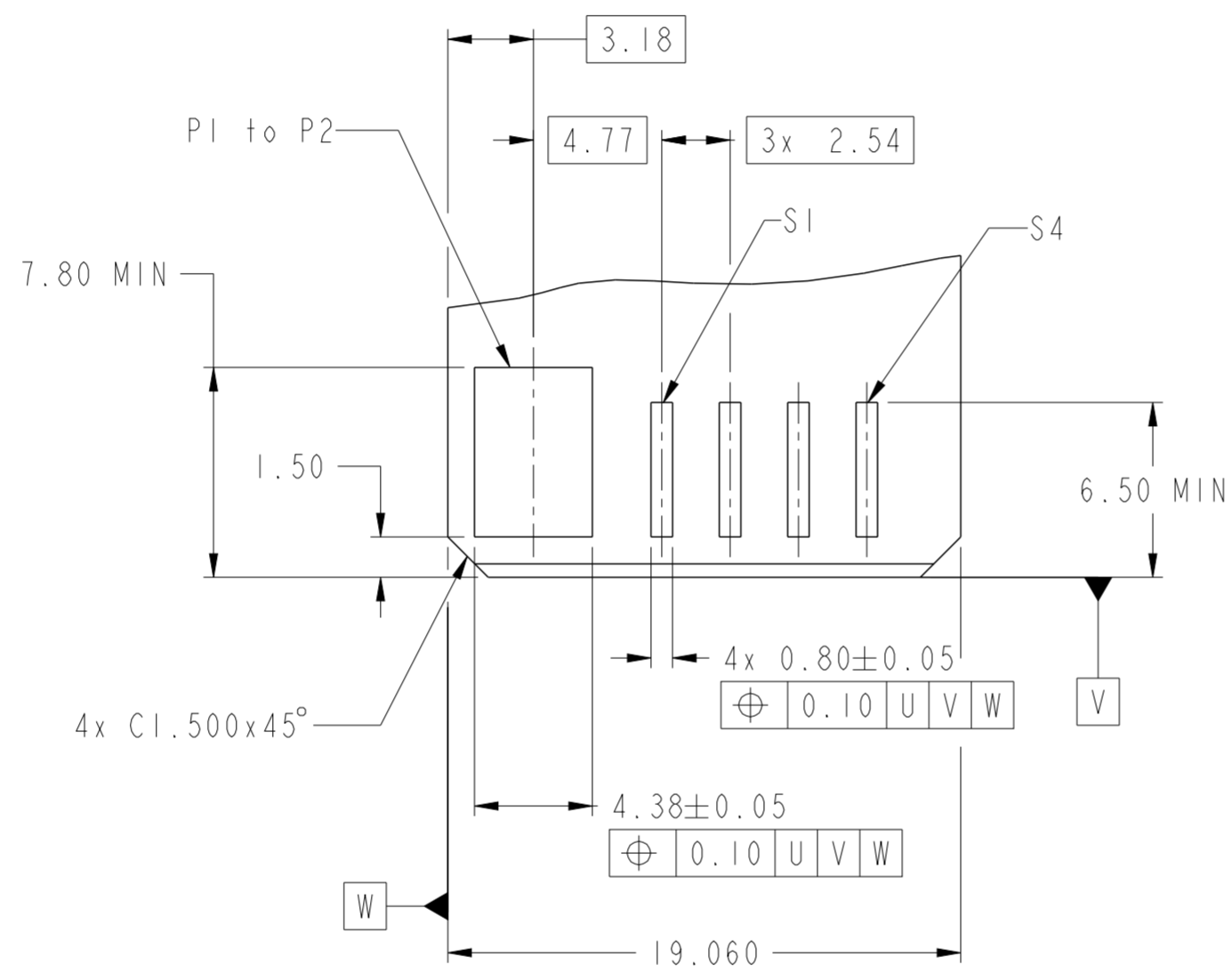
B

C

D

E

F



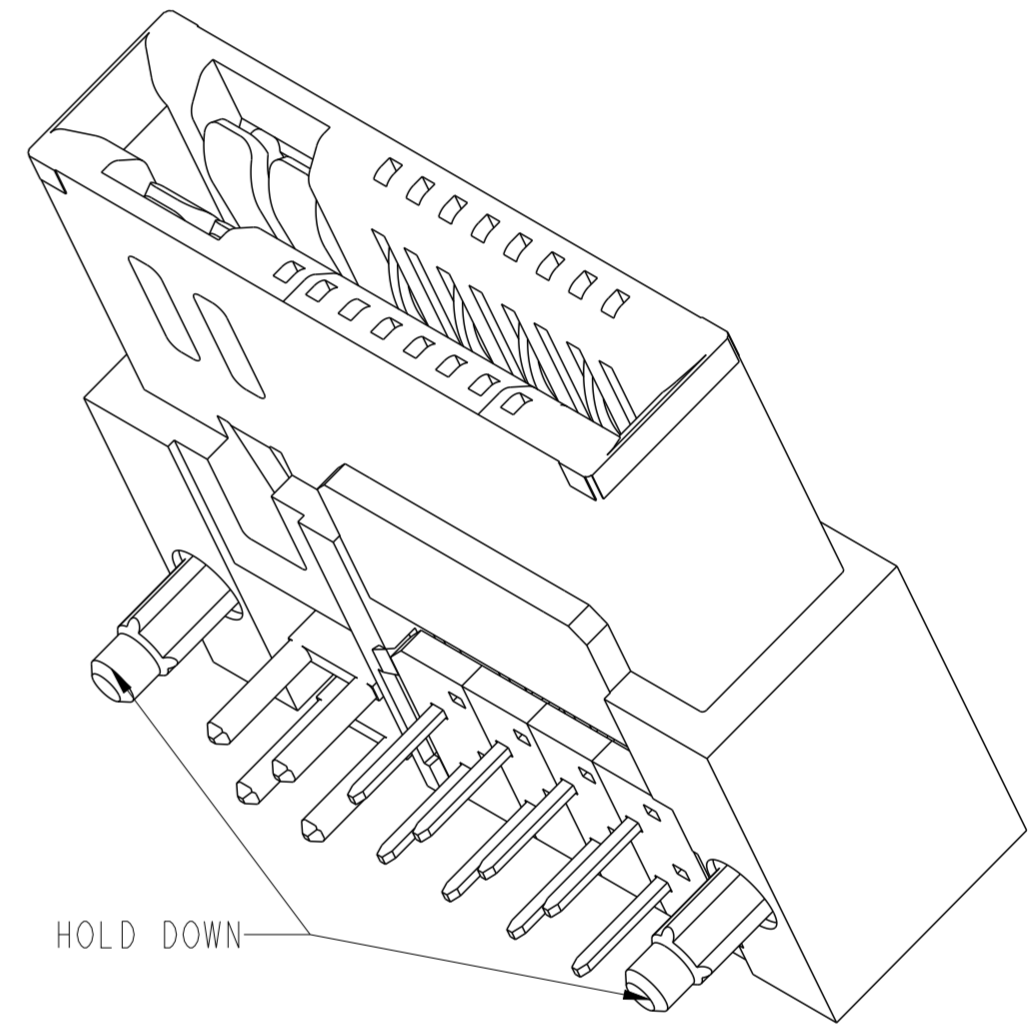
RECOMMENDED MATING BOARD FOOT PRINT

Amphenol
FCi



© 2016 AFci


spec ref	-	dr	Eric Jiang	2012/12/25	projection	MM	size	A2	scale	4:1
tolerance std	ISO 406 ISO 1101	eng	Sunny2 Liu	2016/05/06			ecn no	ELX-DG-24036-1	rel level	Released
TOLERANCES UNLESS OTHERWISE SPECIFIED		chr	Terris Liu	2016/05/20						
surface	ISO 1302	appr	Pai-Ming Zheng	2016/05/24	Amphenol FCI			title R/A REC 4P+16S HIGH POWER CARD EDGE	dwg no 10123844	rev B
					cat. no.	Product - Customer Drw	sheet 3 of 4			

PART NUMBER	TAIL TYPE	HOLD DOWN OPTION	DIM "A" TAIL LENGTH
10123844-001LF	SOLDER TAIL	YES	3.25±0.25
10123844-002LF		NO	
10123844-003LF		YES	2.60±0.25
10123844-004LF		NO	



NOTES:

- CONNECTOR MATERIALS:
 HOUSING: HIGH TEMPERATURE THERMAL PLASTIC, BLACK
 UL 94V-0 COMPLIANT
 CONTACTS: HIGH PERFORMANCE COPPER ALLOY.
- CONTACT FINISH REF. GS-12-604 SECTION 5.2.
- PRODUCT SPECIFICATION: GS-12-604.
- APPLICATION SPECIFICATION: GS-20-128.
-  5. PRODUCT MARKING ON HOUSING IN AREA SHOWN MEETS AFCI SPECIFICATION: GS-24-007.
- PACKAGING MEETS FCI SPECIFICATION GS-14-937.
- HOUSING COMPONENT WILL WITHSTAND EXPOSURE TO 260°C PEAK TEMPERATURE FOR 60 SECONDS IN A CONVECTION, INFRA-RED, OR VAPOR PHASE REFLOW OVEN.
8. COPPER PLATING THICKNESS IN CENTER OF VIA-HOLE CAN BE NO MORE THAN 0.003 LESS THAN OTHER AREAS.
9. ALL HOLE SIZES ARE FINISHED HOLE SIZES.
10. MOUNTING HOLES ARE UNPLATED
 $\varnothing 2.18 \pm 0.03$ FOR SOLDER TAILS
11. A SYMBOL  WILL BE NEXT TO ANY DIMENSION, VIEW, OR NOTE WHICH HAS BEEN MODIFIED WITH THE CURRENT DRAWING REVISION.

spec ref	-	dr	Eric Jiang	2012/12/25	projection	MM	size	A2	scale	4:1			
tolerance std	ISO 406 ISO 1101	eng	Sunny2 Liu	2016/05/06		←→	ecn no	ELX-DG-24036-1					
TOLERANCES UNLESS OTHERWISE SPECIFIED		chr	Terris Liu	2016/05/20			rel level	Released					
surface	linear	0.X	±0.5	Amphenol FCI	product family		R/A REC 4P+16S HIGH POWER CARD EDGE	dwg no	10123844	rev	B		
		0.XX	±0.25		cat. no.							Product - Customer Drw	sheet 4 of 4
	angular	0°	±2°		STATUS: Released							Printed: May 24, 2016	

Amphenol FCI

© 2016 AFCI