

| ATLANTIC VERSION TERMINATOR INTERFACE ADAPTER | PART NUMBER | REVISION | DESCRIPTION | FEED TYPE | APPLICATOR STYLE CONVERSION CHART | | | | | | |
|---|-------------|--------------------------|--------------------------------|--------------------------------|-----------------------------------|-----------------------|-----------|-------------|-----------|-----------|------------------------|
| | | | | | CONVERT TO | PART NUMBERS REQUIRED | | | | | |
| | 2151045-1 | E | FINE CRIMP HEIGHT ADJUST | MECHANICAL | PNEUMATIC FEED | 2119950-1 | 1338685-1 | 5-18022-5 | 2119641-1 | 2119799-1 | 2063440-1 |
| | 2151045-2 | E | FINE CRIMP HEIGHT ADJUST | PNEUMATIC | SERVO LATCH PLATE | 2119951-1 | - | 8-2151045-5 | 1901094-3 | - | 2168400-6 (QUANTITY 2) |
| | | | | | SMART APPLICATOR | 2161326-1 | - | 8-2151045-4 | - | - | |
| | | | | | MECHANICAL FEED | 2119949-1 | 1338685-1 | 5-18022-5 | 2119653-1 | - | - |
| | 2151045-5 | E | FINE CRIMP HEIGHT ADJUST | SERVO LATCH PLATE ⁴ | SERVO LATCH PLATE | 2119951-1 | - | 8-2151045-5 | 1901094-3 | - | 2168400-6 (QUANTITY 2) |
| | | | | | SMART APPLICATOR | 2161326-1 | - | 8-2151045-4 | - | - | |
| | | | | | MECHANICAL FEED | 2119949-1 | 1338685-1 | 5-18022-5 | 2119653-1 | - | - |
| 2151045-6 | E | NON-CRIMP HEIGHT ADJUST | SERVO LATCH PLATE ⁴ | - | - | - | - | - | - | - | |
| | | | | - | - | - | - | - | - | - | |
| 2151045-7 | E | FINE CRIMP HEIGHT ADJUST | NONE | - | - | - | - | - | - | - | |
| 7-2151045-7 | A | CRIMP TOOLING KIT | - | - | - | - | - | - | - | - | |

| APPLICATOR DATA | | |
|-----------------|----------------|------|
| CRIMP | SIZE | TYPE |
| WIRE | 1.57 mm [.062] | F |
| INSUL | 2.29 mm [.090] | O |

APPLICATOR INSTRUCTIONS
408-10389

| TERMINAL DATA: TE TERMINAL | | TE CRIMP SPECIFICATION | |
|---|-------------|------------------------------|-------------|
| TERMINAL NAME: MICRO POWER QUADLOK SOCKET CONTACT | | | |
| WIRE STRIP LENGTH | | INSULATION DIAMETER RANGE | |
| 3.20-3.80 mm [.126-.150 IN] | | Ø1.20-1.60 mm [.047-.063 IN] | |
| TERMINAL APPLICATION SPECIFICATION | 114-18141 | - | - |
| TERMINALS APPLIED ³ ⁴ | | | |
| TE TERMINAL | TE TERMINAL | TE TERMINAL | TE TERMINAL |
| 968678-2 | 968679-5 | 1-968679-5 | |
| 968679-2 | 968679-6 | 2-968679-5 | |

| WIRE SIZE | CRIMP HEIGHT mm [INCH] | CRIMP HEIGHT REFERENCE SETTING |
|-----------|----------------------------|--------------------------------|
| 0.50mm2 | 1.15+/-0.03 [.045+/- .001] | 5.6 |
| 0.35mm2 | 1.08+/-0.03 [.043+/- .001] | 6.3 |

- ¹ RECOMMENDED SPARE PARTS
- ² GREASE BEARING SURFACES LIGHTLY
- 3. LUBRICATE DAILY PER THE APPLICATOR INSTRUCTION SHEET SUPPLIED WITH THE APPLICATOR.
- ⁴ APPLICATOR SPECIFIC DATA TO BE ENTERED INTO BLANK MEMORY CHIP AT ASSEMBLY. SEE BELOW FOR PART NUMBER:
 MECHANICAL FEED WITH "SMART APPLICATOR" CONVERSION: 8-2151045-4
 PNEUMATIC FEED WITH "SMART APPLICATOR" CONVERSION: 8-2151045-4
 SERVO FEED WITH "FINE CRIMP HEIGHT ADJUST": 8-2151045-5
 SERVO FEED WITH "NON-CRIMP HEIGHT ADJUST": 8-2151045-6
- 5. ADJUSTMENT OF THE STRIPPER MAY BE REQUIRED WHEN MOVING THE APPLICATOR BETWEEN BENCH AND LEADMAKER APPLICATIONS.
- ⁶ APPLY PART NUMBER 1-23419-5 LOCTITE TO THREADS OF ITEMS 62. APPLY PART NUMBER 2-23419-6 LOCTITE FOR THREADS OF ITEM 242. FOR -6 ONLY APPLY PART NUMBER 1-23419-5 LOCTITE TO THREADS OF ITEM 37.
- ⁷ GREASE THREADS, GROOVE AND O-RING ON ITEMS 35 & 252.
- ⁸ MAGNET, ITEM 166 MUST BE ORIENTED CORRECTLY IN ORDER TO PROPERLY ACTUATE THE COUNTER.
- ⁹ CRIMP HEIGHT REFERENCE SETTING WAS THE SETTING USED WHEN THE APPLICATOR WAS QUALIFIED AT THE FACTORY. ADJUSTMENT MAY BE NECESSARY WHEN RUNNING APPLICATOR IN THE FIELD.
- ¹⁰ SPARE FEED CAM STORAGE LOCATION REFER TO INSTRUCTION SHEET FOR ADDITIONAL INFORMATION.
- ¹¹ TO CONVERT THE APPLICATOR TO A NON-CARRIER CUTTING STYLE, REMOVE ITEM 13 AND ATTACH TO THE LOCATION ON THE BACK SIDE OF THE HOUSING. REFER TO INSTRUCTION SHEET FOR ADDITIONAL INFORMATION.
- ¹² WHEN ASSEMBLING -6 NON-CRIMP HEIGHT ADJUST APPLICATOR USE SHIM PACK 2119957-2 TO ALIGN APPLICATOR'S MAXIMUM WIRE CRIMP HEIGHT AT NORMAL TERMINATOR SHUT HEIGHT
- ¹³ WHEN RUNNING TERMINAL 968678 MOVE ITEM 7 BETWEEN ITEM 44 OR ITEM 245 AND ITEM 18.
- ¹⁴ WHEN RUNNING TERMINAL 968679 MOVE ITEM 261 BETWEEN ITEM 44 OR ITEM 245 AND ITEM 18.

***WARNING**
ON INSTALLATION, SET WIRE DISC, ITEM 40 TO LARGEST WIRE SIZE SETTING. USE OF SETTINGS BELOW MINIMUM REQUIRED CRIMP HEIGHT SETTING WILL CAUSE DAMAGE TO CRIMP TOOLING.

| | | | | | | | | | | |
|--------------|-----|----|----|----|----|----|---|------------|---------------------------------|---------|
| ⁴ | - | 1 | 1 | 1 | 1 | 1 | 1 | 6-240641-5 | SPACER | 261 |
| | - | - | 1 | - | - | - | - | 2119957-2 | APPLICATOR SHIM PACK | 260 |
| ⁴ | - | 1 | - | 1 | 1 | 1 | 1 | 8-21084-0 | O-RING, .676 ID, .070 DIA. MAT. | 252 |
| | - | - | - | - | 1 | - | - | 2119640-1 | PUSH ROD, AIR FEED | 250 |
| | -77 | -7 | -6 | -5 | -2 | -1 | | PART NO | DESCRIPTION | ITEM NO |

ATLANTIC VERSION
Shown on sheets 1 of 4 & 2 of 4
(Pacific version shown on sheets 3 of 4 & 4 of 4)

SET UP GAUGE
2119599-1

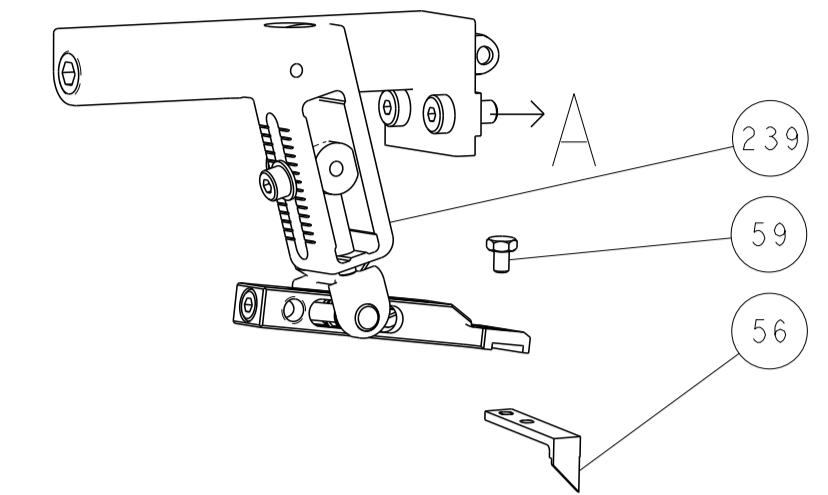
| REVISIONS | | | | |
|-----------|---------------|-------------|-----------|-------|
| P | LTN | DESCRIPTION | DATE | OWN |
| B | ECR-12-012346 | | 10JUL2012 | XZ GB |
| C | ECR-13-007007 | | 25APR2013 | CC TE |
| D | ECR-14-002232 | | 14FEB2014 | XZ GB |
| E | ECR-16-012668 | | 6SEP2016 | TB TE |

| | | | | | | | | | |
|-----|-----|-----|-----|-----|-----|--------------|-------------------------------------|-----------------------------------|----|
| - | - | - | - | 1 | - | 1803259-1 | BUSHING, FLANGED | 249 | |
| - | - | - | - | 1 | - | 2119641-1 | FEED CAM, AIR FEED | 248 | |
| - | 1 | - | 1 | 1 | 1 | 2119798-1 | DETENT PIN | 247 | |
| - | 1 | - | 1 | 1 | 1 | 1-22279-3 | SPRING, COMPRESSION | 246 | |
| - | - | 1 | - | - | - | 2119758-1 | RAM, AMP STYLE, SIDE FEED, NON-ADJ. | 245 | |
| - | 1 | 1 | 1 | 1 | 1 | 2119082-9 | CAM, SNAIL, INSULATION ADJUSTMENT | 244 | |
| - | 1 | 1 | 1 | 1 | 1 | 2079764-1 | WASHER, WAVE SPRING, CREST-TO-CREST | 243 | |
| - | 1 | 1 | 1 | 1 | 1 | 2119083-1 | RETAINER, INSULATION DIAL | 242 | |
| - | 1 | 1 | 1 | 1 | 1 | 7-18023-7 | SCR, SKT HD CAP M3 X 4.0 | 241 | |
| - | - | 2 | 2 | - | - | 2168400-6 | SHCS, LOW HEAD, RoHS, M5 X 16 | 240 | |
| - | - | - | - | - | 1 | 2119580-1 | MECHANICAL FEED ASSEMBLY | 239 | |
| - | - | - | - | - | 1 | 2063440-1 | AIR FEED MODULE | 238 | |
| - | - | 1 | 1 | - | - | 2119740-2 | TAG, IDENTIFICATION | 213 | |
| - | - | 1 | 1 | - | - | 1901094-3 | SPACER, FEEDER | 198 | |
| - | - | - | - | - | 2 | 21045-3 | RING, RETAIN, EXTERN, 3/16 CRESCENT | 172 | |
| - | 1 | 1 | 1 | 1 | 1 | 994969-1 | MAGNET, RARE EARTH HIGH ENERGY | 166 | |
| - | REF | REF | REF | REF | REF | 994970-2 | COUNTER, MAGNETIC | 164 | |
| - | - | - | - | - | 1 | 240638-1 | SPRING, FEED FINGER | 163 | |
| - | - | - | - | - | 1 | 3-23627-7 | PIN, RETAIN, GRVD, 3/16 X .854 | 137 | |
| - | - | - | - | - | 1 | 2119799-1 | HOLDER, FEED FINGER, AF | 136 | |
| - | - | REF | REF | - | - | SEE NOTE 4 | MEMORY CHIP, PROGRAMMED | 135 | |
| - | - | 1 | 1 | - | - | 1633743-1 | SERVO FEED LATCH ASM | 133 | |
| - | 1 | 1 | 1 | 1 | 1 | 1-18028-2 | WASHER, FLAT, REG M4 | 119 | |
| - | - | REF | REF | - | - | 2119944-1 | FEED FINGER ASSEMBLY, SF | 117 | |
| - | 1 | 1 | 1 | 1 | 1 | 455888-3 | SPACER, CRIMPER | 82 | |
| - | 2 | 2 | 2 | 2 | 2 | 1-2079383-0 | SCR, BHSC, RoHS (M3 X 6) | 79 | |
| - | 1 | 1 | 1 | 1 | 1 | 1633782-2 | FENCE | 78 | |
| - | 1 | 1 | 1 | 1 | 1 | 2119956-1 | DOCUMENTATION PACKAGE | 71 | |
| - | 1 | - | - | - | 1 | 2119740-1 | TAG, IDENTIFICATION | 67 | |
| - | 2 | 2 | 2 | 2 | 2 | 2168078-1 | SCREW, DRIVE, RH, RoHS, 2 x .188 | 66 | |
| - | 1 | - | 1 | 1 | 1 | 2119793-1 | LIMITER, ADJUSTMENT BOLT | 63 | |
| - | 3 | - | 3 | 3 | 3 | 992763-5 | SCR, SET, SOC, CONE POINT, M3 x 4.0 | 62 | |
| - | 1 | 1 | 1 | 1 | 1 | 2079383-4 | SCR, BHSC, RoHS (M4 X 8) | 60 | |
| - | - | - | - | - | 1 | 5-18022-5 | SCR, HEX HD CAP, M4 X 6.0 | 59 | |
| - | - | - | - | - | 1 | 1338685-1 | PAWL, FEED | 56 | |
| - | 4 | 4 | 4 | 4 | 4 | 2168400-1 | SHCS, LOW HEAD, RoHS, M4 X 12 | 54 | |
| - | 2 | 2 | 2 | 2 | 2 | 2-21680083-6 | SCR, SKT HD CAP, RoHS, M4 X 18 | 53 | |
| - | - | - | - | - | 1 | 2 | 18023-9 | SCR, SKT HD CAP M4 X 6.0 | 49 |
| - | - | - | - | - | - | 1 | 2119652-1 | FEED CAM, PRE FEED | 48 |
| - | - | - | - | - | - | 1 | 2119653-1 | FEED CAM, POST FEED | 47 |
| - | 1 | 1 | 1 | 1 | 1 | 2119656-9 | APPLICATOR BASIC ASSEMBLY, SF | 46 | |
| - | 1 | - | - | - | - | 1 | 2119370-1 | RAM, AMP STYLE, SIDE FEED | 44 |
| - | 1 | 1 | 1 | 1 | 1 | 2079383-7 | SCR, BHSC, RoHS (M8 X 25) | 41 | |
| - | 1 | - | - | - | - | 1 | 2119645-1 | DISC, NUMBERED FA WIRE ADJUSTMENT | 40 |
| - | 1 | - | - | - | - | 1 | 2119957-1 | APPLICATOR SHIM PACK | 39 |
| - | 1 | 1 | 1 | 1 | 1 | 2119644-1 | RAM WASHER, PRECISION | 38 | |
| - | 1 | 1 | 1 | 1 | 1 | 2119085-1 | FA HEAD, ATLANTIC STYLE | 37 | |
| - | 1 | - | - | - | - | 1 | 2119092-1 | BOLT, ADJUSTMENT | 35 |
| - | 1 | 1 | 1 | 1 | 1 | 1-1752356-3 | SUPPORT, TERMINAL | 34 | |
| - | 2 | 2 | 2 | 2 | 2 | 2079383-5 | SCR, BHSC, RoHS (M4 X 20) | 33 | |
| - | 1 | 1 | 1 | 1 | 1 | 2161328-1 | HEX HEAD, FLANGED, M5 x 8mm LONG | 32 | |
| - | 1 | 1 | 1 | 1 | 1 | 1320908-3 | SPACER, STRIP GUIDE | 30 | |
| - | 1 | 1 | 1 | 1 | 1 | 2119959-2 | ASSEMBLY, STRIP GUIDE | 29 | |
| - | 1 | 1 | 1 | 1 | 1 | 1-455888-0 | SPACER, CRIMPER | 28 | |
| - | 1 | 1 | 1 | 1 | 1 | 1320928-6 | STRIP GUIDE | 24 | |
| - | 1 | 1 | 1 | 1 | 1 | 2168083-2 | SCR, SKT HD CAP, RoHS, M4 X 8.0 | 21 | |
| - | 1 | 1 | 1 | 1 | 1 | 1-18028-2 | WASHER, FLAT, REG M4 | 20 | |
| - | 1 | 1 | 1 | 1 | 1 | 2119533-1 | STRIPPER, SIDE FEED | 19 | |
| - | 1 | 1 | 1 | 1 | 1 | 879657-2 | HOLD DOWN | 18 | |
| - | 1 | 1 | 1 | 1 | 1 | 2119806-1 | INSERT, SHEAR | 13 | |
| - | 1 | 1 | 1 | 1 | 1 | 3-22280-3 | SPRING, COMPRESSION | 12 | |
| - | 1 | 1 | 1 | 1 | 1 | 1-356885-4 | STOP, SHEAR | 11 | |
| - | 1 | 1 | 1 | 1 | 1 | 2119805-1 | SHEAR HOLDER, FRONT | 10 | |
| - | 1 | 1 | 1 | 1 | 1 | 462006-6 | FLOATING SHEAR, FRONT | 9 | |
| - | 1 | 1 | 1 | 1 | 1 | 5-1333202-3 | ANVIL, COMBINATION | 8 | |
| - | 1 | 1 | 1 | 1 | 1 | 2-240641-5 | SPACER | 7 | |
| - | 1 | 1 | 1 | 1 | 1 | 2119757-8 | DEPRESSOR, SHEAR | 5 | |
| - | 1 | 1 | 1 | 1 | 1 | 238011-9 | BLOCK, CRIMPER SPACER | 4 | |
| - | 1 | 1 | 1 | 1 | 1 | 1-2119784-8 | CRIMPER, INSULATION O PREMIUM | 3 | |
| - | 1 | 1 | 1 | 1 | 1 | 455888-5 | SPACER, CRIMPER | 2 | |
| - | 1 | 1 | 1 | 1 | 1 | 9-657555-1 | CRIMPER, WIRE PREMIUM | 1 | |
| -77 | -7 | -6 | -5 | -2 | -1 | PART NO | DESCRIPTION | ITEM NO | |

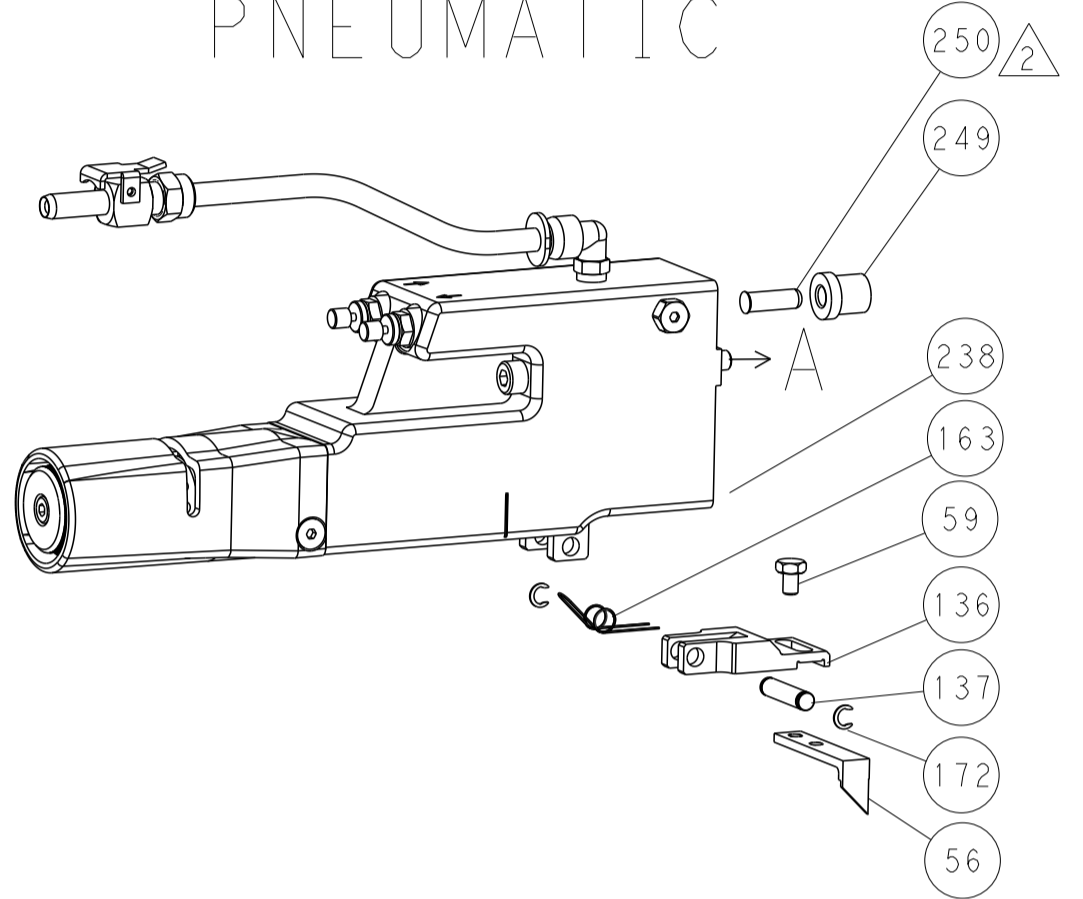
| | | | | |
|--|--|------------------|-----------|--|
| THIS DRAWING IS A CONTROLLED DOCUMENT. | | OWN Y. YIN | 23SEP2011 | TE Connectivity Name Ocean Side Feed Applicator SIZE CAGE CODE DRAWING NO RESTRICTED TO A1 - C=2151045 CUSTOMER ACCESSIBLE PRODUCTION DRAWING SCALE 1:2 SHEET 1 OF 4 REV E |
| DIMENSIONS: | | CHK G. BAILEY | 23SEP2011 | |
| TOLERANCES UNLESS OTHERWISE SPECIFIED: | | APVD S. XI | 23SEP2011 | |
| MATERIAL | | FINISH | WEIGHT | |

| REVISIONS | | | | |
|-----------|-----|-------------|------|------|
| P | LTN | DESCRIPTION | DATE | APVD |
| - | - | SEE SHEET 1 | - | - |
| | | | | |
| | | | | |

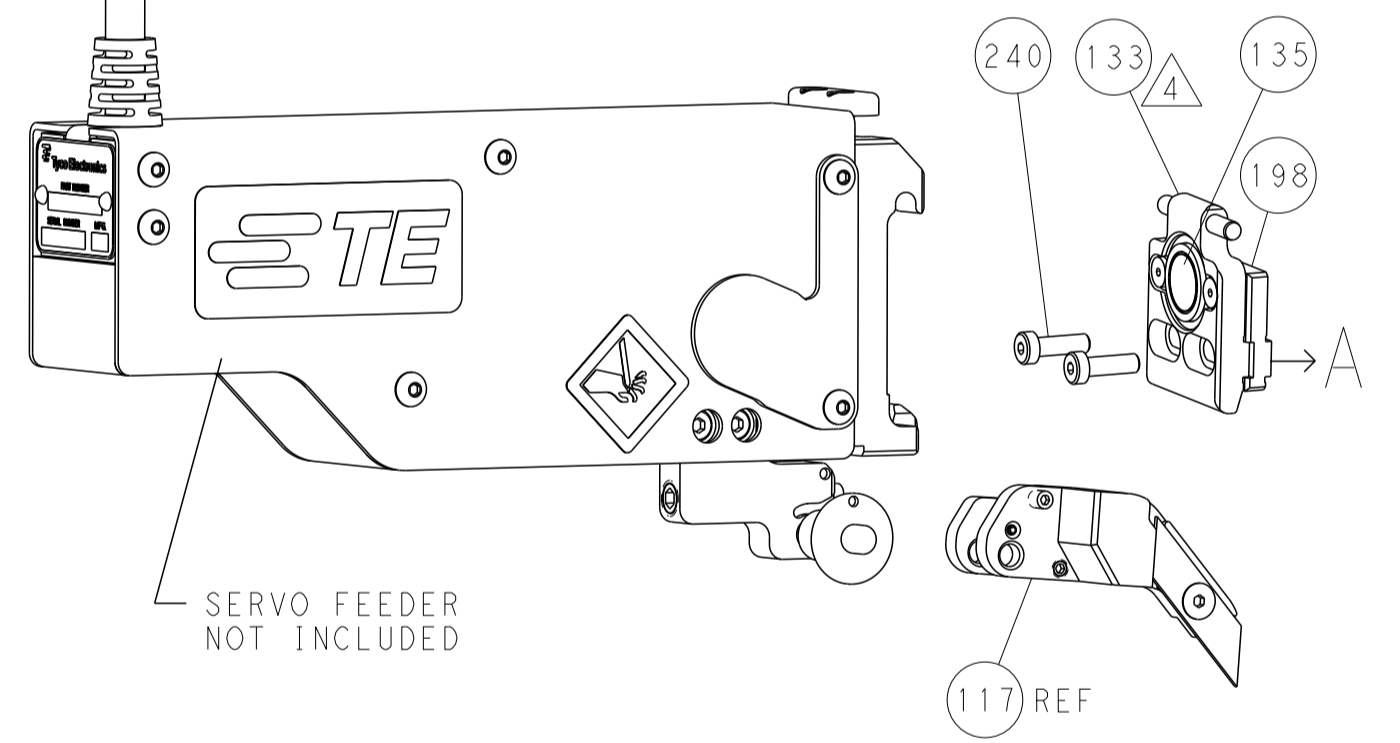
FEED TYPE MECHANICAL



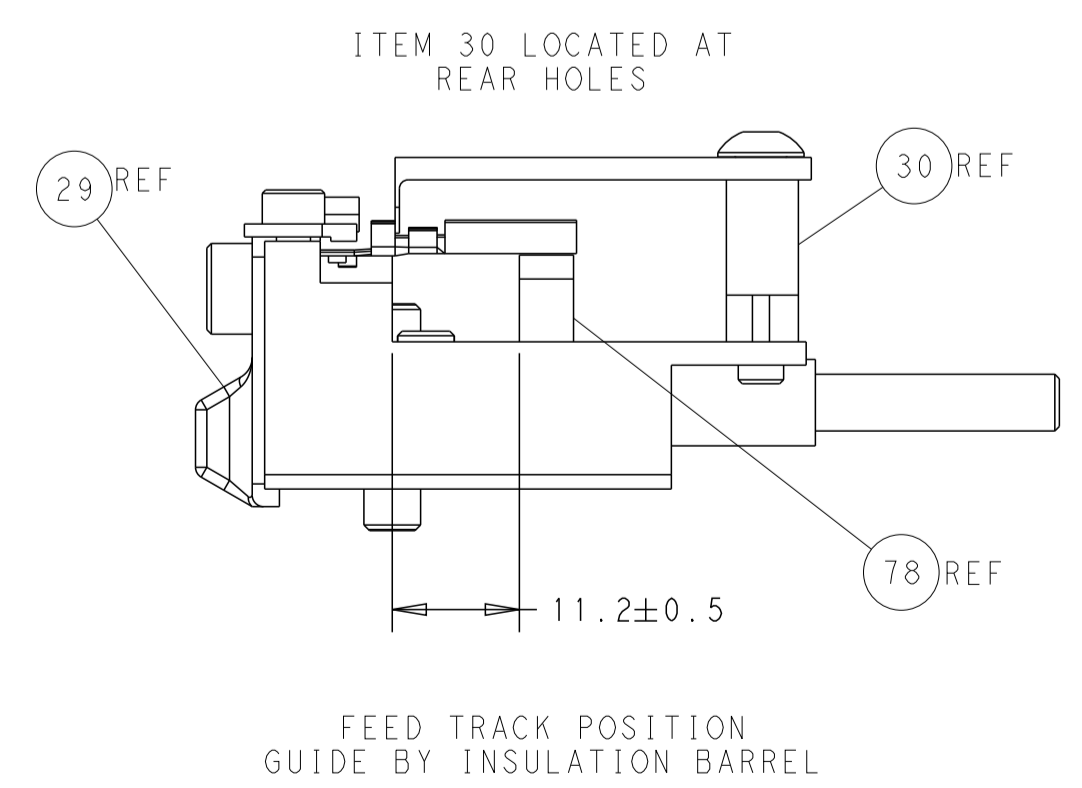
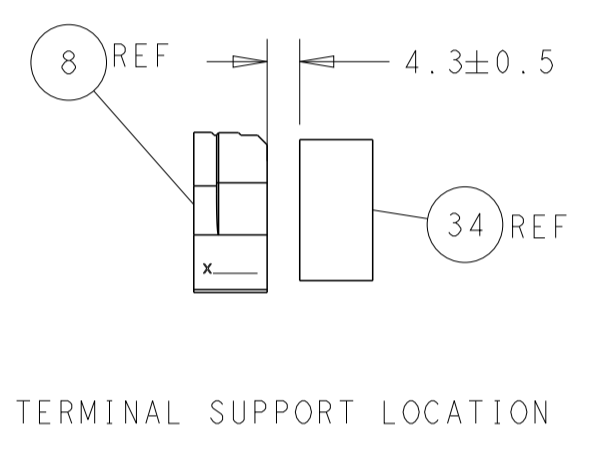
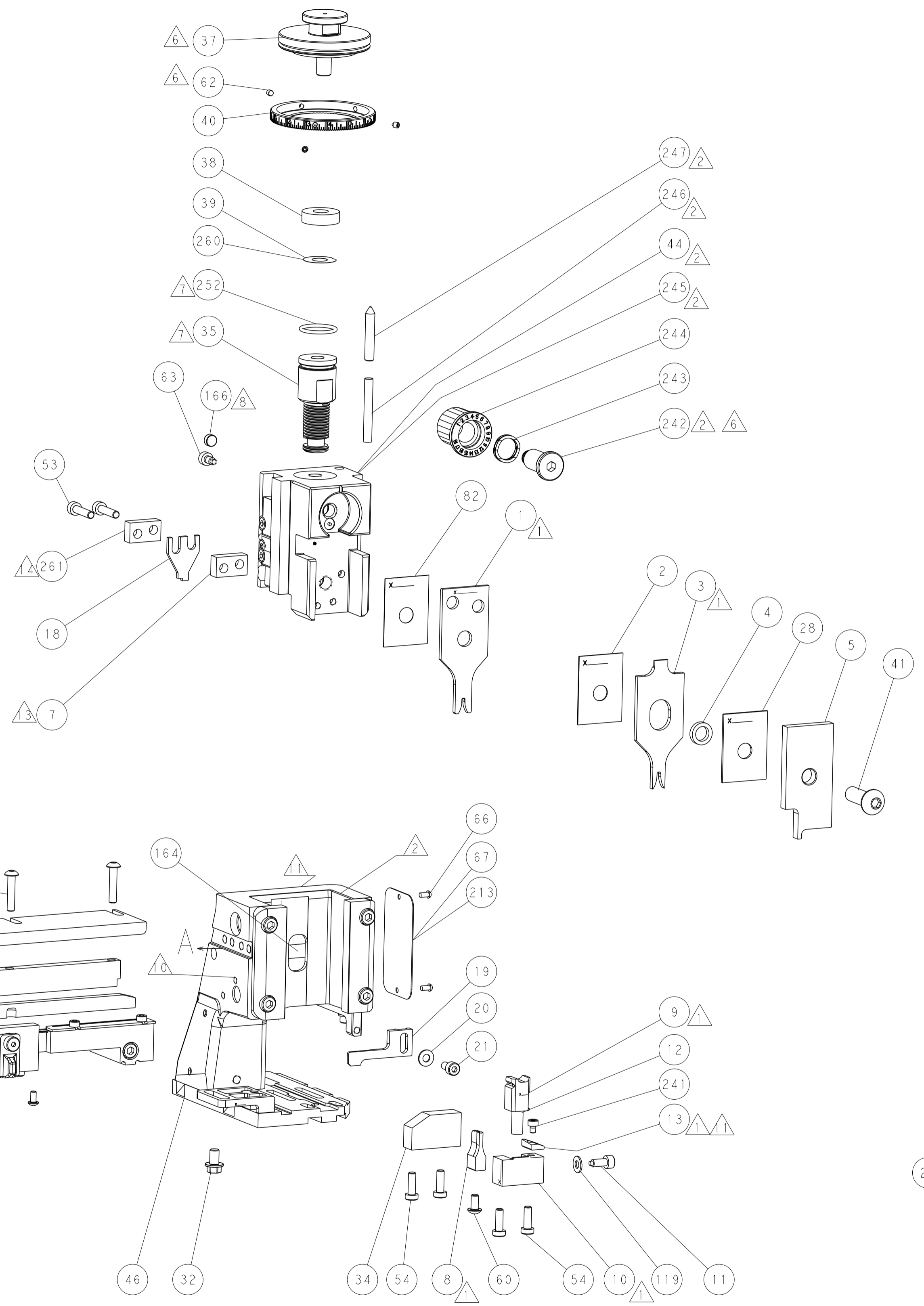
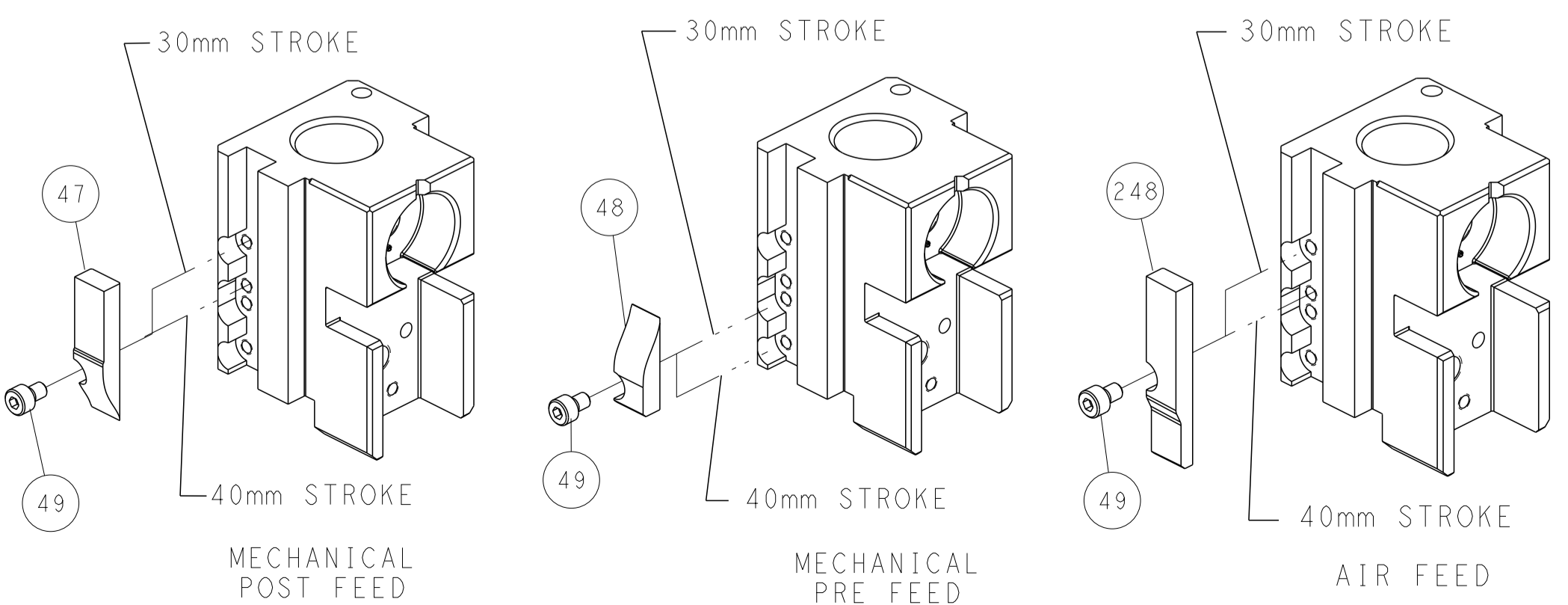
PNEUMATIC



SERVO LATCH PLATE



CAM POSITIONS



ATLANTIC VERSION
 Shown on sheets 1 of 4 & 2 of 4
 (Pacific version shown on sheets 3 of 4 & 4 of 4)

| | | | |
|---|--|--|----------------------------------|
| THIS DRAWING IS A CONTROLLED DOCUMENT. | | OWN: Y. YIN 23SEP2011 | TE Connectivity |
| DIMENSIONS: mm | | CHK: G. BAILEY 23SEP2011 | |
| TOLERANCES UNLESS OTHERWISE SPECIFIED: | | APVD: S. XI 23SEP2011 | NAME: Ocean Side Feed Applicator |
| 0 PLC ± 1 PLC ± 2 PLC ± 3 PLC ± 4 PLC ± ANGLES ± | | PRODUCT SPEC | SIZE: A1 |
| MATERIAL: | | APPLICATION SPEC | CAGE CODE: C=2151045 |
| | | WEIGHT | SCALE: 1:2 |
| | | CUSTOMER ACCESSIBLE PRODUCTION DRAWING | SHEET 2 OF 4 |
| | | | REV E |

THIS DRAWING IS UNPUBLISHED. RELEASED FOR PUBLICATION 2016
 COPYRIGHT 20 BY - ALL RIGHTS RESERVED.

| PACIFIC VERSION TERMINATOR INTERFACE ADAPTER | PART NUMBER | REVISION | DESCRIPTION | FEED TYPE | APPLICATOR STYLE CONVERSION CHART | | | | | | |
|--|-------------|--------------------------|--------------------------|-------------------|-----------------------------------|-----------------------|-------------|-------------|------------------------|------------------------|------------------------|
| | | | | | CONVERT TO | PART NUMBERS REQUIRED | | | | | |
| | | | | | | PNEUMATIC FEED | 2119950-1 | 1338685-1 | 5-18022-5 | 2119641-2 | 2119799-1 |
| | 2-2151045-1 | E | FINE CRIMP HEIGHT ADJUST | MECHANICAL | SERVO LATCH PLATE | 2119951-1 | - | 8-2151045-5 | 1901094-3 | - | 2168400-6 (QUANTITY 2) |
| | | | | | SMART APPLICATOR | 2161326-1 | - | 8-2151045-4 | - | - | - |
| | | | | | MECHANICAL FEED | 2119949-1 | 1338685-1 | 5-18022-5 | 2119653-2 | - | - |
| 2-2151045-2 | E | FINE CRIMP HEIGHT ADJUST | PNEUMATIC | SERVO LATCH PLATE | 2119951-1 | - | 8-2151045-5 | 1901094-3 | - | 2168400-6 (QUANTITY 2) | |
| | | | | SMART APPLICATOR | 2161326-1 | - | 8-2151045-4 | - | - | - | |
| | | | | MECHANICAL FEED | 2119949-1 | 1338685-1 | 5-18022-5 | 2119653-2 | - | - | |
| 2-2151045-5 | E | FINE CRIMP HEIGHT ADJUST | SERVO LATCH PLATE | 2119951-1 | - | 8-2151045-5 | 1901094-3 | - | 2168400-6 (QUANTITY 2) | | |
| 2-2151045-7 | E | FINE CRIMP HEIGHT ADJUST | NONE | - | - | - | - | - | - | - | |
| 7-2151045-7 | A | CRIMP TOOLING KIT | - | - | - | - | - | - | - | - | |

| APPLICATOR DATA | | |
|-----------------------------------|----------------|------|
| CRIMP | SIZE | TYPE |
| WIRE | 1.57 mm [.062] | F |
| INSUL | 2.29 mm [.090] | O |
| APPLICATOR INSTRUCTIONS 408-10389 | | |

| TERMINAL DATA: TE TERMINAL | | TE CRIMP SPECIFICATION | |
|---|-------------|------------------------------|-------------|
| TERMINAL NAME: MICRO POWER QUADLOK SOCKET CONTACT | | | |
| WIRE STRIP LENGTH | | INSULATION DIAMETER RANGE | |
| 3.20-3.80 mm [1.26-.150 IN] | | Ø1.20-1.60 mm [.047-.063 IN] | |
| TERMINAL APPLICATION SPECIFICATION | 114-18141 | - | - |
| TERMINALS APPLIED | | | |
| TE TERMINAL | TE TERMINAL | TE TERMINAL | TE TERMINAL |
| 968678-2 | 968679-5 | 1-968679-5 | |
| 968679-2 | 968679-6 | 2-968679-5 | |

| WIRE SIZE | CRIMP HEIGHT mm [INCH] | CRIMP HEIGHT REFERENCE SETTING |
|-----------|----------------------------|--------------------------------|
| 0.50mm2 | 1.15+/-0.03 [.045+/-0.001] | 5.6 |
| 0.35mm2 | 1.08+/-0.03 [.043+/-0.001] | 6.3 |

- 1 RECOMMENDED SPARE PARTS
- 2 GREASE BEARING SURFACES LIGHTLY
- 3. LUBRICATE DAILY PER THE APPLICATOR INSTRUCTION SHEET SUPPLIED WITH THE APPLICATOR.
- 4 APPLICATOR SPECIFIC DATA TO BE ENTERED INTO BLANK MEMORY CHIP AT ASSEMBLY. SEE BELOW FOR PART NUMBER:
 MECHANICAL FEED WITH "SMART APPLICATOR" CONVERSION: 8-2151045-4
 PNEUMATIC FEED WITH "SMART APPLICATOR" CONVERSION: 8-2151045-4
 SERVO FEED WITH "FINE CRIMP HEIGHT ADJUST": 8-2151045-5
 SERVO FEED WITH "NON-CRIMP HEIGHT ADJUST": 8-2151045-6
- 5. ADJUSTMENT OF THE STRIPPER MAY BE REQUIRED WHEN MOVING THE APPLICATOR BETWEEN BENCH AND LEADMAKER APPLICATIONS.
- 6 APPLY PART NUMBER 1-23419-5 LOCTITE TO THREADS OF ITEM 62. APPLY PART NUMBER 2-23419-6 LOCTITE TO THREADS OF ITEM 242.
- 7 GREASE THREADS, GROOVE AND O-RING ON ITEMS 139 & 152.
- 8 MAGNET MUST BE ORIENTED CORRECTLY IN ORDER TO PROPERLY ACTUATE THE COUNTER.
- 9 CRIMP HEIGHT REFERENCE SETTING WAS THE SETTING USED WHEN THE APPLICATOR WAS QUALIFIED AT THE FACTORY. ADJUSTMENT MAY BE NECESSARY WHEN RUNNING APPLICATOR IN THE FIELD.
- 10 SPARE FEED CAM STORAGE LOCATION REFER TO INSTRUCTION SHEET FOR ADDITIONAL INFORMATION.
- 11 TO CONVERT THE APPLICATOR TO A NON-CARRIER CUTTING STYLE, REMOVE ITEM 13 AND ATTACH TO THE LOCATION ON BACK SIDE OF THE HOUSING. REFER TO INSTRUCTION SHEET FOR ADDITIONAL INFORMATION.
- 12 WHEN RUNNING TERMINAL 968678 MOVE ITEM 7 BETWEEN ITEM 44 OR ITEM 245 AND ITEM 18.
- 13 WHEN RUNNING TERMINAL 968679 MOVE ITEM 261 BETWEEN ITEM 44 OR ITEM 245 AND ITEM 18.

***WARNING**
 ON INSTALLATION, SET WIRE DISC, ITEM 40 TO LARGEST WIRE SIZE SETTING. USE OF SETTINGS BELOW MINIMUM REQUIRED CRIMP HEIGHT SETTING WILL CAUSE DAMAGE TO CRIMP TOOLING.

PACIFIC VERSION
 Shown on sheets 3 of 4 & 4 of 4
 (Atlantic version shown on sheets 1 of 4 & 2 of 4)

SET UP GAUGE
 2119599-1

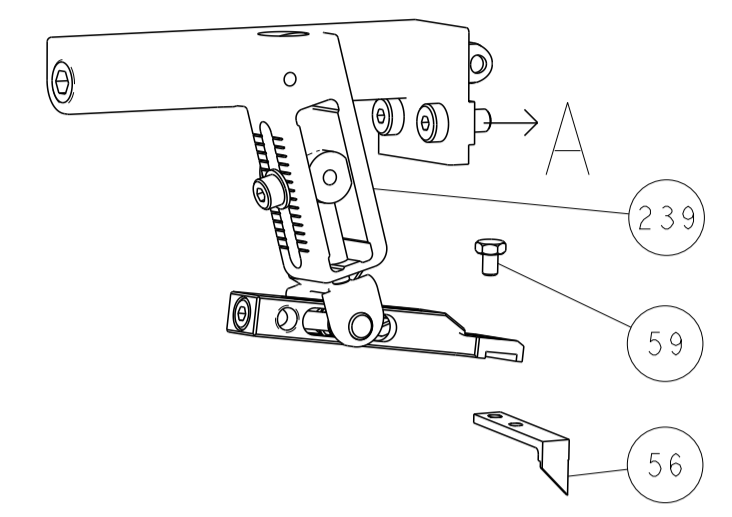
| REVISIONS | | | | |
|-----------|-----|-------------|------|-----|
| P | LTN | DESCRIPTION | DATE | OWN |
| - | - | SEE SHEET 1 | - | - |

| | | |
|-------------|-------------------------------------|-----|
| 6-240641-5 | SPACER | 261 |
| 2119782-1 | FINE ADJUST HEAD ASM, PACIFIC STYLE | 251 |
| 2119640-1 | PUSH ROD, AIR FEED | 250 |
| 1803259-1 | BUSHING, FLANGED | 249 |
| 1-22279-3 | SPRING, COMPRESSION | 246 |
| 2119082-9 | CAM, SNAIL, INSULATION ADJUSTMENT | 244 |
| 2079764-1 | WASHER, WAVE SPRING, CREST-TO-CREST | 243 |
| 2119083-1 | RETAINER, INSULATION DIAL | 242 |
| 7-18023-7 | SCR, SKT HD CAP M3 X 4.0 | 241 |
| 2168400-6 | SHCS, LOW HEAD, RoHS, M5 X 16 | 240 |
| 2119580-1 | MECHANICAL FEED ASSEMBLY | 239 |
| 2063440-1 | AIR FEED MODULE | 238 |
| 2119740-2 | TAG, IDENTIFICATION | 213 |
| 1901094-3 | SPACER, FEEDER | 198 |
| 21045-3 | RING, RETAIN, EXTERN, 3/16 CRESCENT | 172 |
| 994969-1 | MAGNET, RARE EARTH HIGH ENERGY | 166 |
| 994970-2 | COUNTER, MAGNETIC | 164 |
| 240638-1 | SPRING, FEED FINGER | 163 |
| 8-21084-1 | O-RING, .801 ID, .070 DIA. MAT. | 152 |
| 2119641-2 | FEED CAM, AIR FEED | 151 |
| 2119798-2 | DETENT PIN | 145 |
| 2079383-8 | SCR, BHSC, RoHS (M4 X 16) | 144 |
| 2168400-5 | SHCS, LOW HEAD, RoHS, M4 X 20 | 143 |
| 2119653-2 | FEED CAM, POST FEED | 142 |
| 1-2119656-0 | APPLICATOR BASIC ASSEMBLY, SF | 141 |
| 2119650-1 | RAM, ASIAN STYLE, SIDE FEED | 140 |
| 2119092-2 | BOLT, ADJUSTMENT | 139 |
| 3-23627-7 | PIN, RETAIN, GRVD, 3/16 X .854 | 137 |
| 2119799-1 | HOLDER, FEED FINGER, AF | 136 |
| SEE NOTE 4 | MEMORY CHIP, PROGRAMMED | 135 |
| 1633743-1 | SERVO FEED LATCH ASM | 133 |
| 1-18028-2 | WASHER, FLAT, REG M4 | 119 |
| 2119944-1 | FEED FINGER ASSEMBLY, SF | 117 |
| 455888-3 | SPACER, CRIMPER | 82 |
| 1-2079383-0 | SCR, BHSC, RoHS (M3 X 6) | 79 |
| 1633782-2 | FENCE | 78 |
| 2119956-1 | DOCUMENTATION PACKAGE | 71 |
| 2119740-1 | TAG, IDENTIFICATION | 67 |
| 2168078-1 | SCREW, DRIVE, RH, RoHS, 2 x .188 | 66 |
| 2119793-1 | LIMITER, ADJUSTMENT BOLT | 63 |
| 992763-5 | SCR, SET, SOC, CONE POINT, M3 X 4.0 | 62 |
| 5-18022-5 | SCR, HEX HD CAP, M4 X 6.0 | 59 |
| 1338685-1 | PAWL, FEED | 56 |
| 2-2168083-6 | SCR, SKT HD CAP, RoHS, M4 X 18 | 53 |
| 18023-9 | SCR, SKT HD CAP M4 X 6.0 | 49 |
| 2119652-1 | FEED CAM, PRE FEED | 48 |
| 2079383-7 | SCR, BHSC, RoHS (M8 X 25) | 41 |
| 2119645-1 | DISC, NUMBERED FA WIRE ADJUSTMENT | 40 |
| 2119957-1 | APPLICATOR SHIM PACK | 39 |
| 2119644-1 | RAM WASHER, PRECISION | 38 |
| 1-1752356-3 | SUPPORT, TERMINAL | 34 |
| 2079383-5 | SCR, BHSC, RoHS (M4 X 20) | 33 |
| 2161328-1 | HEX HEAD, FLANGED, M5 X 8mm LONG | 32 |
| 1320908-3 | SPACER, STRIP GUIDE | 30 |
| 2119959-2 | ASSEMBLY, STRIP GUIDE | 29 |
| 1-455888-0 | SPACER, CRIMPER | 28 |
| 1320928-6 | STRIP GUIDE | 24 |
| 2168083-2 | SCR, SKT HD CAP, RoHS, M4 X 8.0 | 21 |
| 1-18028-2 | WASHER, FLAT, REG M4 | 20 |
| 2119533-1 | STRIPPER, SIDE FEED | 19 |
| 879657-2 | HOLD DOWN | 18 |
| 2119806-1 | INSERT, SHEAR | 13 |
| 3-22280-3 | SPRING, COMPRESSION | 12 |
| 1-356885-4 | STOP, SHEAR | 11 |
| 2119805-1 | SHEAR HOLDER, FRONT | 10 |
| 462006-6 | FLOATING SHEAR, FRONT | 9 |
| 5-1333202-3 | ANVIL, COMBINATION | 8 |
| 2-240641-5 | SPACER | 7 |
| 2119757-8 | DEPRESSOR, SHEAR | 5 |
| 238011-9 | BLOCK, CRIMPER SPACER | 4 |
| 1-2119784-8 | CRIMPER, INSULATION O PREMIUM | 3 |
| 455888-5 | SPACER, CRIMPER | 2 |
| 9-657555-1 | CRIMPER, WIRE PREMIUM | 1 |

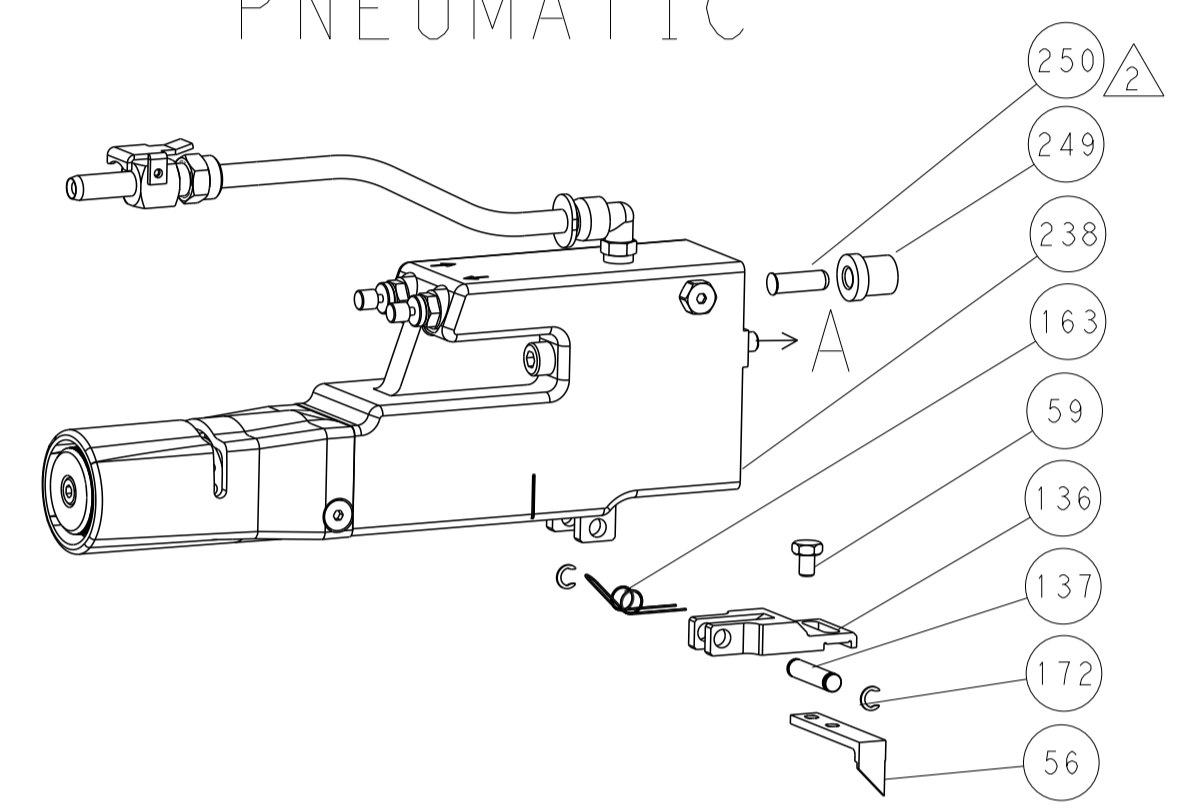
| | | | |
|--|--|--------------------------|----------------------------------|
| THIS DRAWING IS A CONTROLLED DOCUMENT. | | OWN: Y. YIN 23SEP2011 | TE Connectivity |
| DIMENSIONS: mm | | CHK: G. BAILEY 23SEP2011 | |
| TOLERANCES UNLESS OTHERWISE SPECIFIED: | | APVD: S. XI 23SEP2011 | NAME: Ocean Side Feed Applicator |
| | | PRODUCT SPEC | SIZE: A1 |
| MATERIAL: - | | APPLICATION SPEC | CAGE CODE: - |
| FINISH: - | | WEIGHT: - | DRAWING NO: C=2151045 |
| CUSTOMER ACCESSIBLE PRODUCTION DRAWING | | SCALE: 1:2 | SHEET 3 OF 4 |

| REVISIONS | | | | |
|-----------|-----|-------------|------|------|
| P | LTN | DESCRIPTION | DATE | APVD |
| - | - | SEE SHEET 1 | - | - |
| | | | | |
| | | | | |

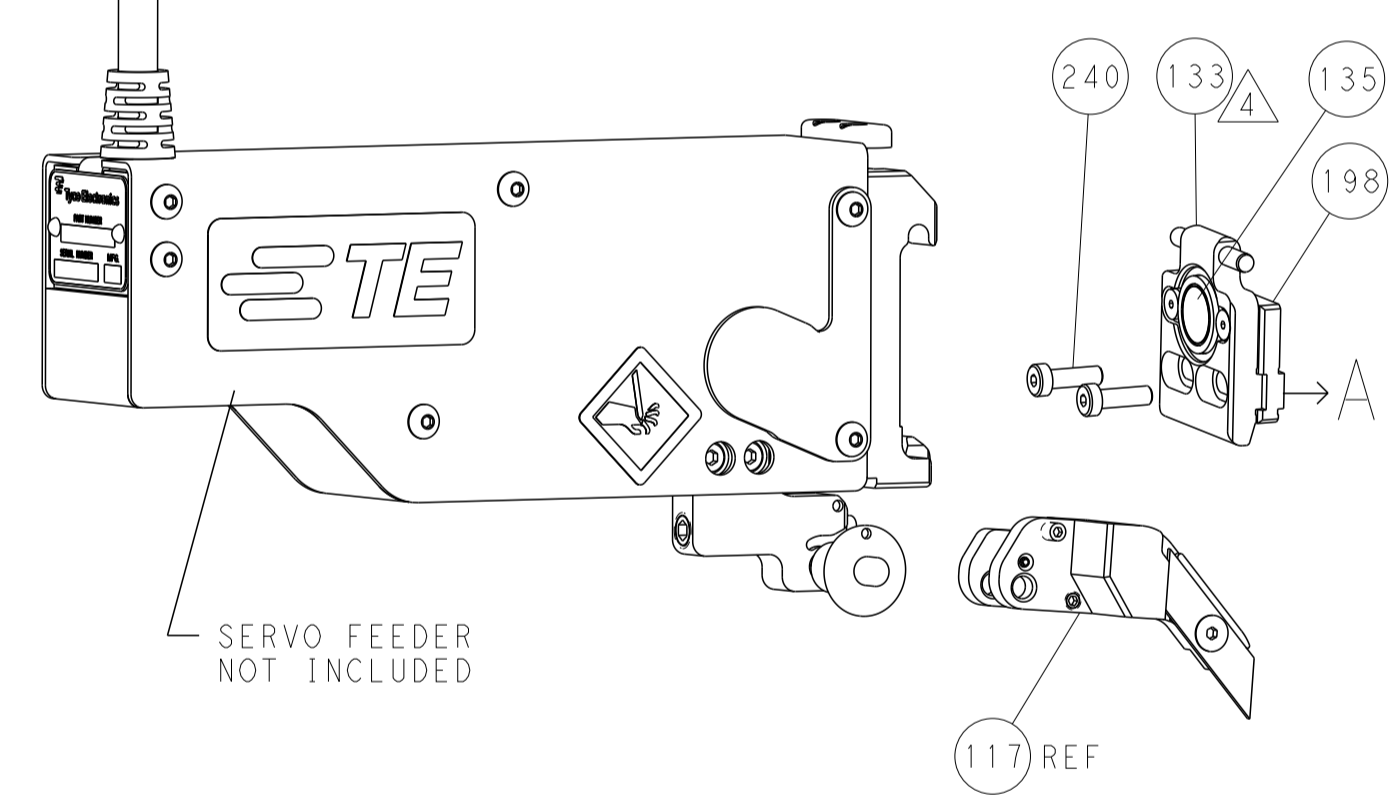
FEED TYPE MECHANICAL



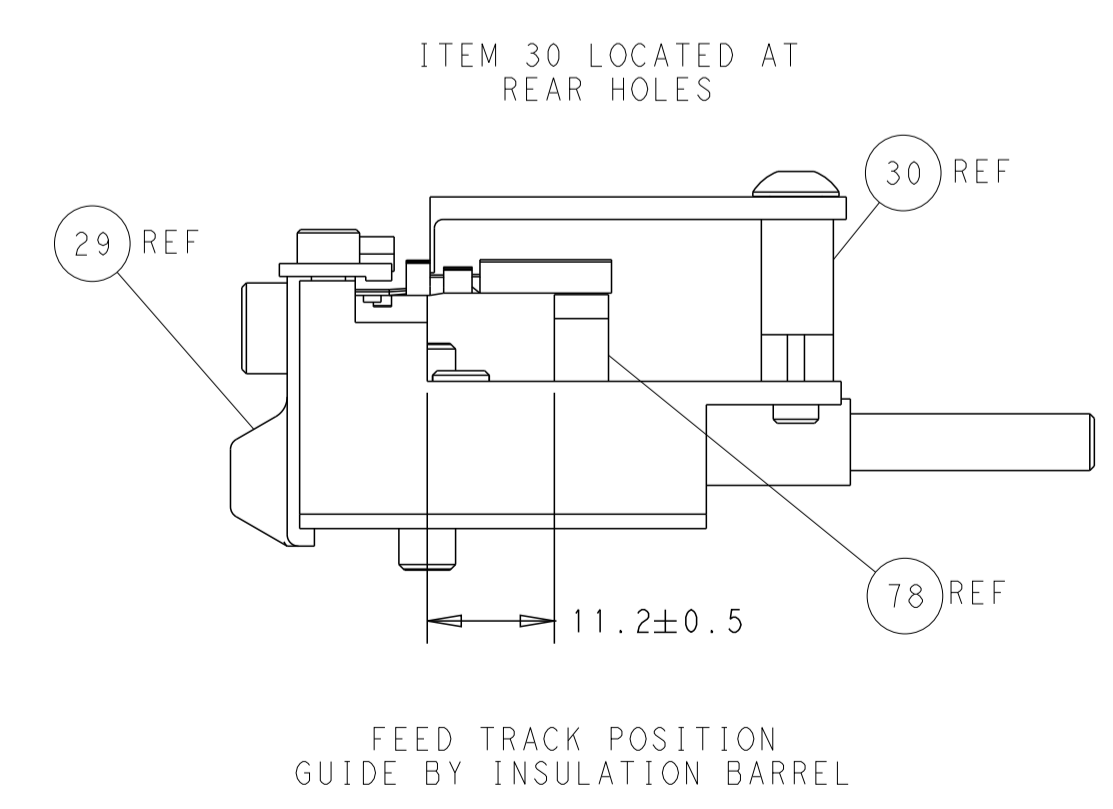
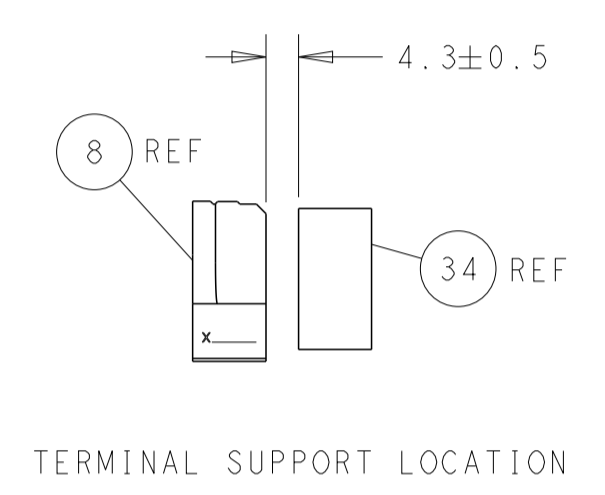
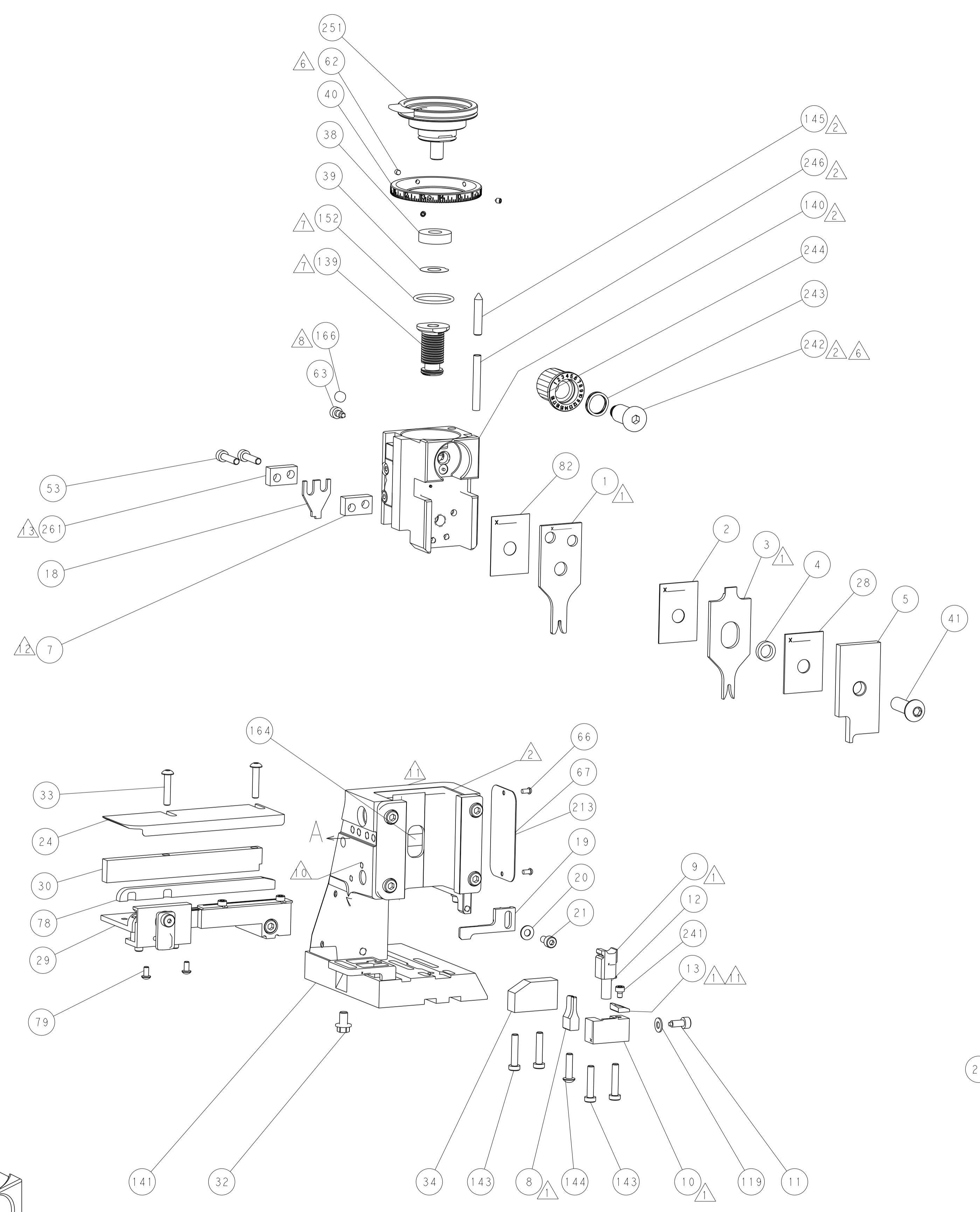
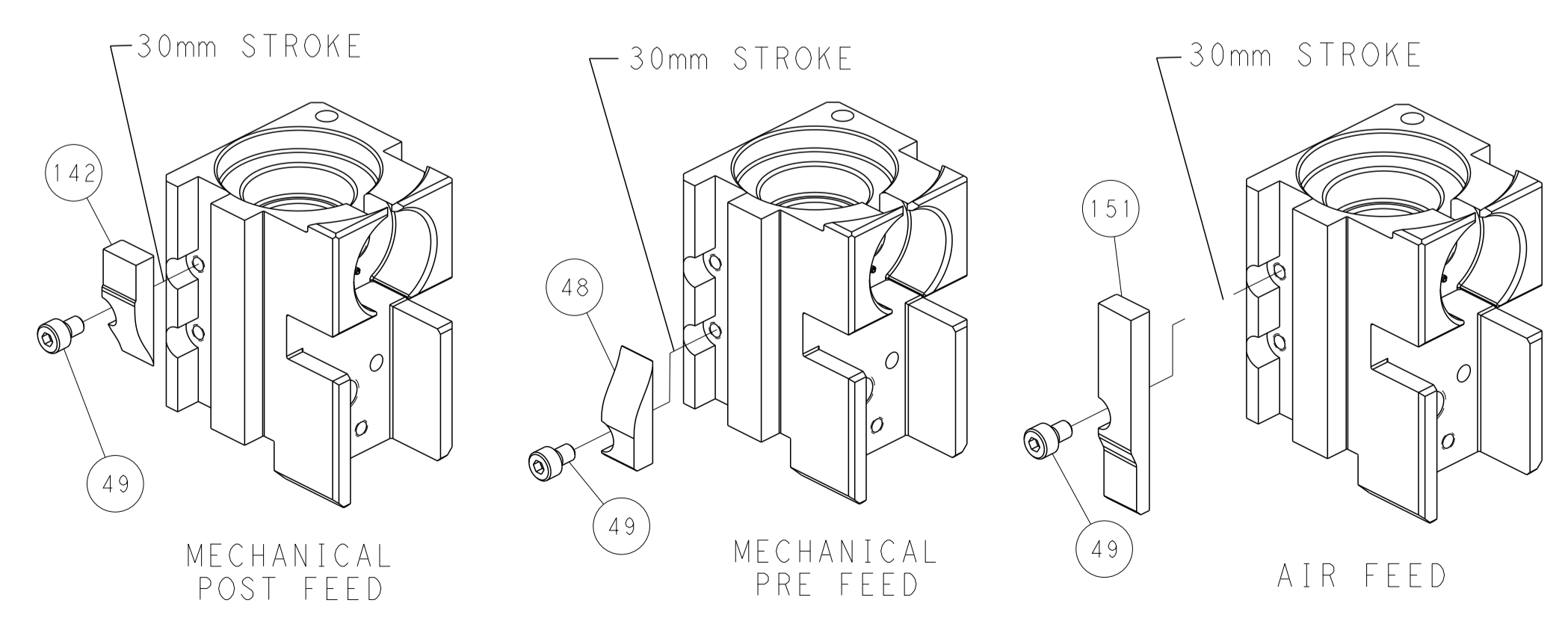
PNEUMATIC



SERVO LATCH PLATE



CAM POSITIONS



PACIFIC VERSION
 Shown on sheets 3 of 4 & 4 of 4
 (Atlantic version shown on sheets 1 of 4 & 2 of 4)

| | | | |
|--|---|--|----------------------------------|
| THIS DRAWING IS A CONTROLLED DOCUMENT. | | OWN: Y. YIN 23SEP2011 | TE Connectivity |
| DIMENSIONS: mm | | CHK: G. BAILEY | |
| TOLERANCES UNLESS OTHERWISE SPECIFIED: | | APVD: - | NAME: Ocean Side Feed Applicator |
| 0 PLC | ± | PRODUCT SPEC | APPLICATION SPEC |
| 1 PLC | ± | APPLICATOR SPEC | SCALE: 1:2 |
| 2 PLC | ± | WEIGHT | SHEET 4 OF 4 |
| 3 PLC | ± | CUSTOMER ACCESSIBLE PRODUCTION DRAWING | REV E |
| 4 PLC | ± | | |
| ANGLES | ± | | |
| FINISH | - | | |