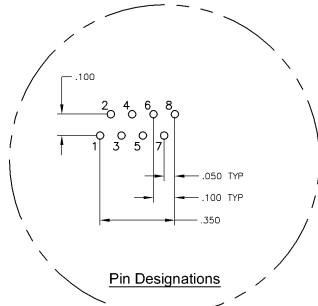
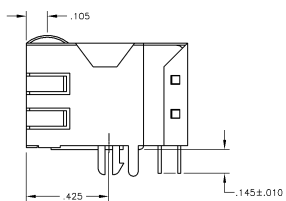
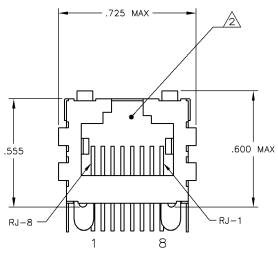
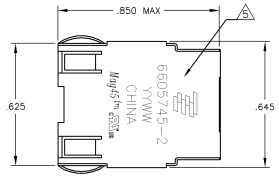


REV. 01	AA	22	REV PER ECO-08-028512	DESCRIPTION	VL	TX
---------	----	----	-----------------------	-------------	----	----

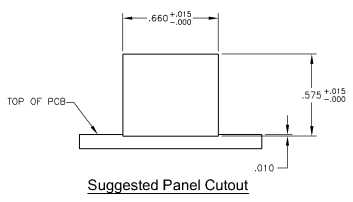
REV. 01	AA	22	REV PER ECO-08-028512	DESCRIPTION	VL	TX
---------	----	----	-----------------------	-------------	----	----

MECHANICAL:



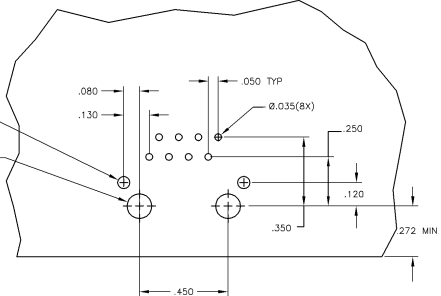
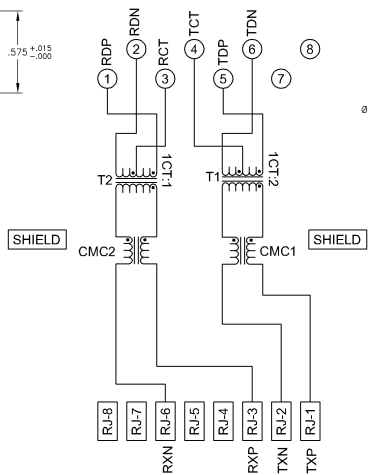
Pin Designations

- △ **MATERIALS:**
HOUSING - THERMOPLASTIC PET POLYESTER FLAMMABILITY RATING UL 94V-0
SHIELD - .010" THICK, C26800 BRASS PREPLATED WITH 50µINCH MIN SEMI-BRIGHT NICKEL. SOLDER TABS POST DIPPED WITH 100µINCH MIN SAC SOLDER.
MOD JACK CONTACTS - 0.0157 X 0.018" PHOSPHOR BRONZE, 50µINCH MIN OVERALL NICKEL UNDERPLATE WITH SELECT 50µINCH MIN HARD GOLD FINISH PLATE. SOLDER TAILS WITH 100µINCH MIN MATTE TIN AND/OR SAC SOLDER DIP.
- △ RJ45 JACK CAVITY CONFORMS TO FCC RULES AND REGULATIONS PART 68, SUB PART F
- △ **MAGNETICS:**
-IMPEDANCE: 100 OHMS
-TURNS RATIO (CMP. CABLE): TX: 12, RX: 11
-OPEN CIRCUIT INDUCTANCE (OCL): 14.0nH (MIN) @ 25 °C, 60nH (MIN) @ -40 °C, @100KHZ, 0.1V RMS, TX AND RX
-LEAKAGE INDUCTANCE (LL): 0.30nH (MAX)
-INTER-WINDING CAPACITANCE (C_w): 12pF (MAX)
-ISOLATION VOLTAGE: COMPLIES WITH IEEE802.3 2002, PARA 14.3.1.1, ITEM a.
- 4. OPERATING TEMPERATURE: FROM 0 C TO +70 C.
- △ TYPICAL ELEC. LOGO, PART NUMBER, DATE CODE, COUNTRY OF ORIGIN AND AGENCY APPROVAL MARKING IN APPROXIMATE LOCATION SHOWN.
- 6. THE PART IS RECOMMENDED FOR WAVE SOLDERING PROCESS. PREHEAT TEMPERATURE IS 120 °C TO 160 °C, 120 SECONDS TO 180 SECONDS. PEAK WAVE SOLDERING TEMPERATURE IS 260 °C MAX, 10 SECONDS MAX.



Suggested Panel Cutout

720 SERIES MAGNETIC CIRCUIT



**Suggested PCB Layout
(Component Side)**

6605745-2
PART NUMBER

THIS DRAWING IS A CONTROLLED DOCUMENT. IT IS THE PROPERTY OF TYPHO ELECTRONICS. IT IS TO BE KEPT IN CONFIDENCE AND NOT TO BE REPRODUCED OR TRANSMITTED IN ANY FORM OR BY ANY MEANS, ELECTRONIC OR MECHANICAL, INCLUDING PHOTOCOPIING, RECORDING, OR BY ANY INFORMATION STORAGE AND RETRIEVAL SYSTEM.		TYPHO ELECTRONICS	
REVISIONS	DATE	BY	CHKD
1	10/01/09	AA	AA
2	10/01/09	AA	AA
3	10/01/09	AA	AA
4	10/01/09	AA	AA
5	10/01/09	AA	AA
6	10/01/09	AA	AA
7	10/01/09	AA	AA
8	10/01/09	AA	AA
9	10/01/09	AA	AA
10	10/01/09	AA	AA
11	10/01/09	AA	AA
12	10/01/09	AA	AA
13	10/01/09	AA	AA
14	10/01/09	AA	AA
15	10/01/09	AA	AA
16	10/01/09	AA	AA
17	10/01/09	AA	AA
18	10/01/09	AA	AA
19	10/01/09	AA	AA
20	10/01/09	AA	AA
21	10/01/09	AA	AA
22	10/01/09	AA	AA