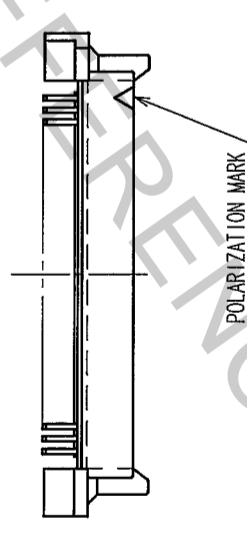
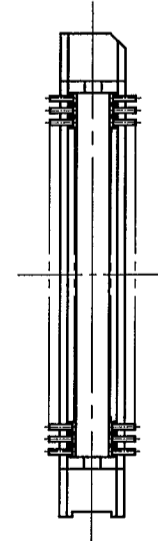
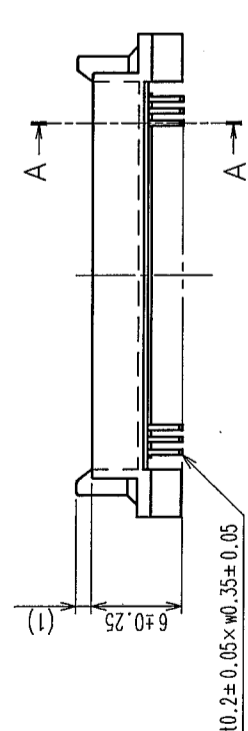
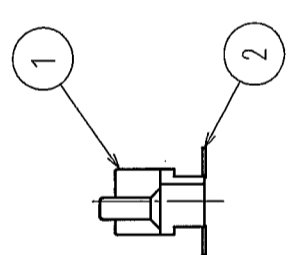
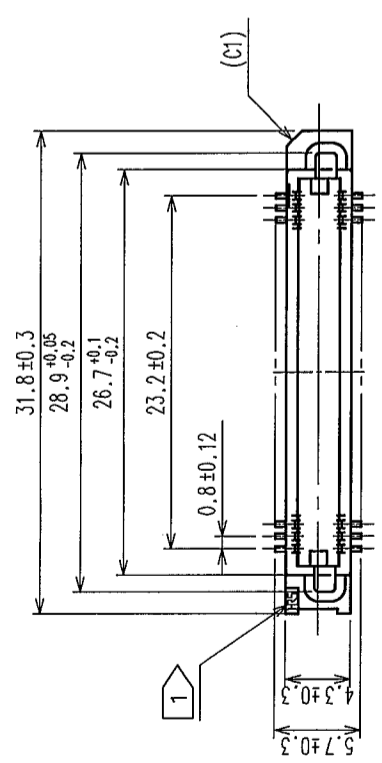
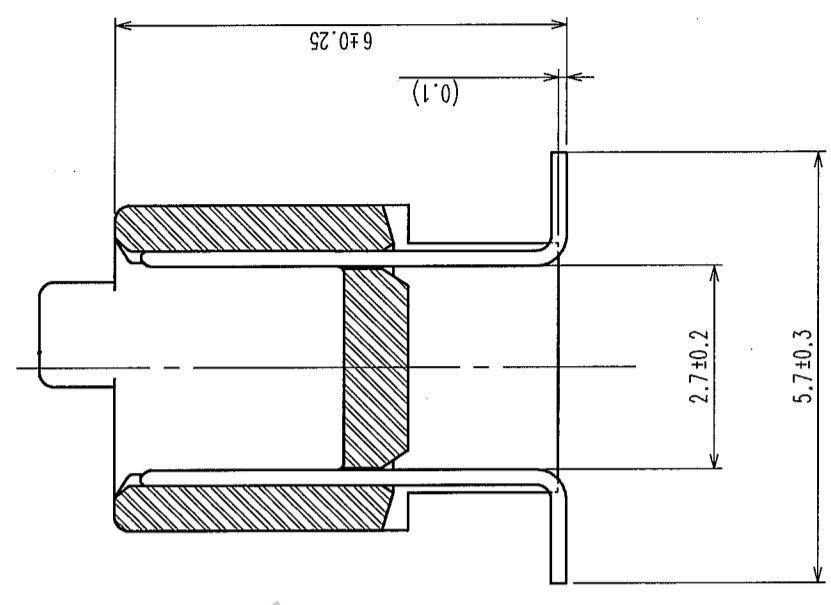


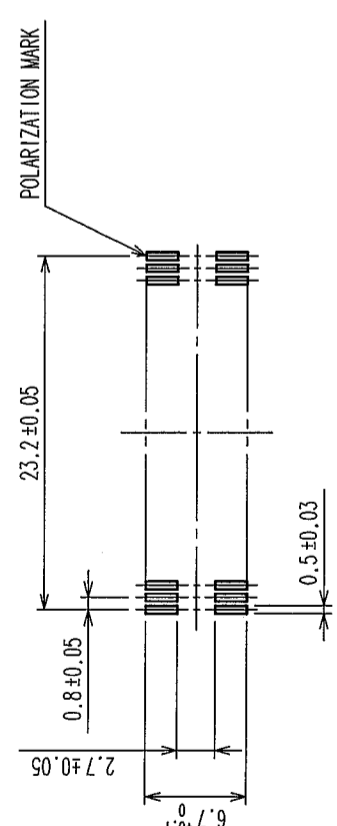
COUNT	DESCRIPTION OF REVISIONS	BY	CHKD	DATE	COUNT	DESCRIPTION OF REVISIONS	BY	CHKD	DATE
△					△				
△					△				
△					△				

A-A (10:1)



- NOTE
- 1 HRS MARK SHALL BE OPTIONAL.
 - 2 LEAD CO-PLANARITY SHALL BE 0.1mm MAX.
 - 3 THE DIMENSIONS IN PARENTHESES ARE FOR REFERENCE.
 - 4 EMBOSSED CARRIER TAPE PACKAGING SHALL BE APPLIED FOR THIS PRODUCT.
 - 5 FOR MODIFICATION, ETC, PREVENTIVE HOLE FOR SINK MARK MAY BE ADDED ACCORDING TO CIRCUMSTANCES.

RECOMMENDED P.C.B. LAND PATTERN(MOUNT SIDE)



1	POLYPHENYLENE SULFIDE	LIGHT BROWN	UL94V-0	2	PHOSPHOR BRONZE		
NO.	MATERIAL	FINISH, REMARKS	NO.	MATERIAL	FINISH, REMARKS		
CODE NO. (OLD)	CL		DRAWN	DESIGNED	CHECKED	APPROVED	RELEASED
			Y. AOYAGI	J. Noda	K. Ogawa	H. Okawa	
			05.09.27	05.09.27	05.09.27	05.09.27	
DRAWING NO.		PART NO.		CONTACT AREA : GOLD 0.1μm min.		LEAD AREA : TIN-PLATING 1μm min.	
EDC3-071326-22		FX6A-60P-0.8SV2(92)		UNDER PLATING : NICKEL 1μm min.			
SCALE	2:1						
UNITS	mm						
HRS		HIROSE ELECTRIC CO., LTD		CL576-0245-8-92		1/2	

HRS DRAWING FOR REFERENCE

