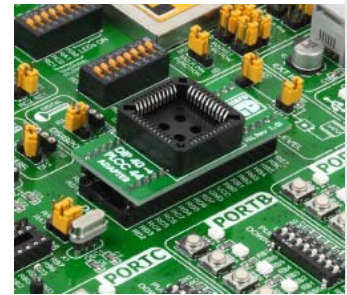
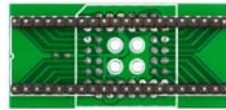


## DIP to PLCC44 Adapter Board

In order to use a PIC with the PLCC housing shape in a device that supports only DIP packaging, a PLCC adapter is required. You can also use this board with your programming board which contains DIP40 socket. Once the programming is complete, the MCU can be pulled out of the adapter. The following PIC microcontrollers are supported by this board: 16F74, 16F77, 16F871, 16F874A, 16F877A, 18F242, 18F252, 18F442, 18F448, 18F452 and 18F458.



**CUSTOMIZATION:** We can modify our products to suit your requirements, click [here for details](#).

MIKROE-147

**DIP to PLCC44 Adapter Board**

## MikroElektronika Embedded Solutions



### PIC Solution

- PIC Dev. Boards
- PIC Compilers
- PIC Programmers
- mikroLab Kits for PIC
- PIC Books

### PIC32 Solution

- PIC32 Dev. Boards
- PIC32 Compilers
- PIC32 Programmers
- mikrolab Kits for PIC32

### dsPIC Solution

- dsPIC Dev. Boards
- dsPIC Compilers
- dsPIC Programmers
- mikroLab Kits for dsPIC
- dsPIC Books

### AVR Solution

- AVR Dev. Boards
- AVR Compilers
- AVR Programmers
- mikroLab Kits for AVR

### STM32 Solution

- STM32 Dev. Boards
- STM32 Compilers
- STM32 Programmers
- mikroLab Kits for STM32

### Tiva C Series Solution

- Tiva C Dev. Boards
- Tiva C Compilers
- Tiva C Programmers
- mikroLab Kits for Tiva C

### 8051 Solution

- 8051 Dev. Boards
- 8051 Compilers
- 8051 Programmers
- 8051 Books
- mikroLab Kits for 8051

### FT90x Solution

- FT90x Dev. Boards
- FT90x Compilers
- FT90x Programmers
- mikroLab Kits for FT90x

### Additional Software

- Visual TFT
- Visual GLCD
- Package Manager
- GLCD Font Creator
- Timer Calculator

### Add-on boards

- Click Boards
- Click Packs
- mikromedia shields
- Communication

- Storage
- Real Time Clock
- Display
- Measurement
- Audio & Voice
- Power Supply
- GPS
- GSM/GPRS



Support



Forum



mikroBUS



Lets make



Press



Legal



Archive



About Us



Customization