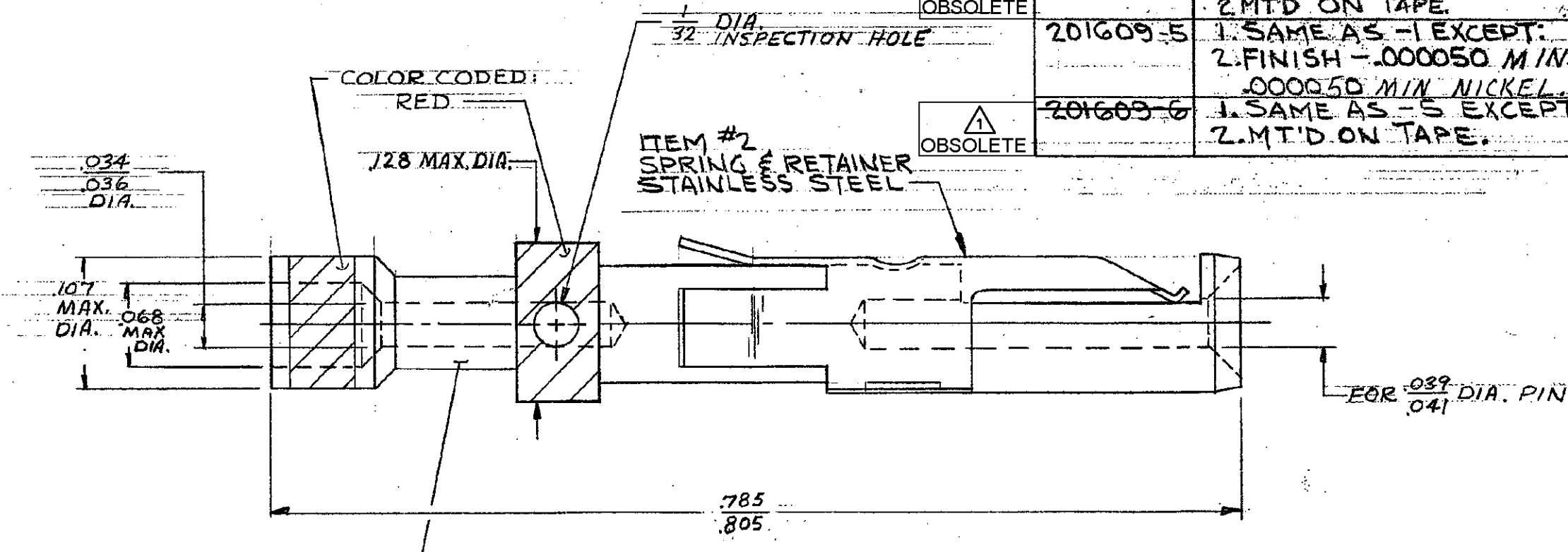


NUMBER 201609

NOTES:

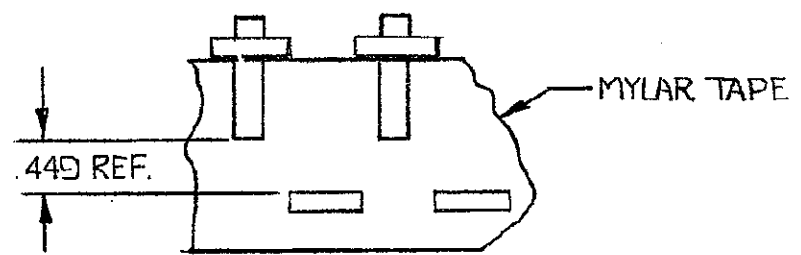
⚠ OBSOLETE PARTS: OBSOLETE CIS STREAMLINING PER D.RENAUD/D.SINISI

	201609-1	1. AS SHOWN.
OBSOLETE	201609-2	1. SAME AS -1 EXCEPT; 2. FINISH OF ITEM #1, SILVER OVER NICKEL
OBSOLETE	201609-3	1. SAME AS -1 EXCEPT; 2. FINISH OF ITEM #1, .0001 MIN GOLD OVER .0001 MIN SILVER
OBSOLETE	201609-4	1. SAME AS -1 EXCEPT; 2. MTD ON TAPE.
	201609-5	1. SAME AS -1 EXCEPT; 2. FINISH -.000050 MIN GOLD OVER .000050 MIN NICKEL.
OBSOLETE	201609-6	1. SAME AS -5 EXCEPT; 2. MTD ON TAPE.



ITEM #1  
SOCKET BODY  
COPPER ALLOY  
.00003 MIN GOLD OVER  
.00005 MIN NICKEL

WHEN ORDERING CONTACT ON TAPE, ORDER BY THE TAPE NUMBER PLUS THE PACKAGING CODE AS FOLLOWS:  
1. FOR USE WITH AMP TAPETRONIC, PNEUMATIC TOOL -  
A. 1000 PARTS TO A BOX ADD PACKAGING CODE: 1MBOX  
2. FOR USE WITH 4/8 INDENT STRIPPER CRIMPER -  
A. 1000 PARTS TO A REEL ADD PACKAGING CODE: 1MREEL  
B. 5000 PARTS TO A REEL ADD PACKAGING CODE: 5MREEL



TAPE MTD ASS'Y  
201609-4 AND  
201609-6 ONLY.

DIMENSIONS IN INCHES. DO NOT SCALE PRINT

P1	REVISED PER ECO-09-026346		KK	26NOV
			AEG	09
P	REACTIVATE -4 PER EC		GT	6-9-88
	OGIC-62-98			
N	OBS-4 PER ECN BD5016		AKW	1/92
M	OBS-3 PER ECN BD3038		J.P.	10/89
L	REV PER ECN BD2619		THW	3-89
K	OBS-2 PER ECU	S 4359	THW	3-79
J	REACTIVATE -6 PER ECN	S 4770	THW	8-88
H	OBSOLETE -6 PER	S 4350	THW	12-82
G	REVISED	S 4142	THW	9-87
F	REACTIVATED -5 PER ECN	K 323	THW	1/88
E	OBSOLETE -5	J 727	THW	11/82
D2	NOTE ADDED	B 141	THW	11/87
D1	REVISED	B 119	THW	8/87
D	REV RETAINER SPRING TO SET, Z	308	THW	11-88
C	Added -4	2361	THW	1-88
B	REVISED	U-5	THW	8-83
A	REVISED	14/88	THW	12/82
LTR	REVISION RECORD	3341	THW	5/82
		BY	CHK	DATE

TOLERANCES  
EXCEPT AS NOTED  
DECIMALS: ± .008  
FRACTIONS: ± 1/64  
ANGLES: ± 1/2°

MATERIAL SEE CALL OUT		DR J. Kaufman 12-1-61	ENGR J. B. Miller 11-5-61
HEAT TREAT H		CHK G. Williams 12-5-61	APP J. Curry 12/5/61
FINISH SEE CALL OUT		<b>AMP</b> AMP INCORPORATED HARRISBURG, PENNA.	
NAME #20 SOCKET CONTACT ASS'Y WIRE SIZE 28-24 ~.035-.055 INS. DIA.			
SCALE 10:1	LOC FT B	NO 201609	REV P1

CUSTOMER DRAWING