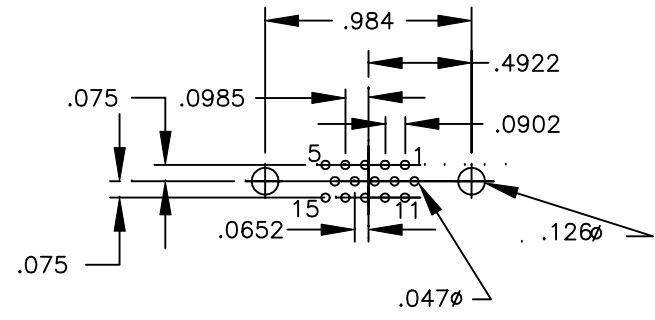
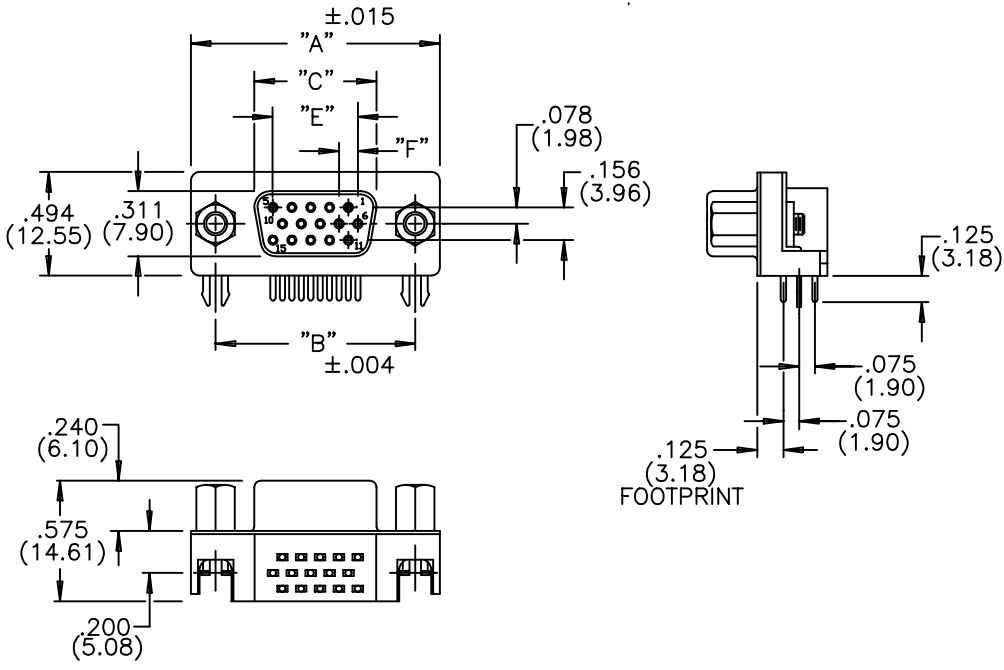


DESCRIPTION: HIGH DENSITY .125" FOOTPRINT FEMALE

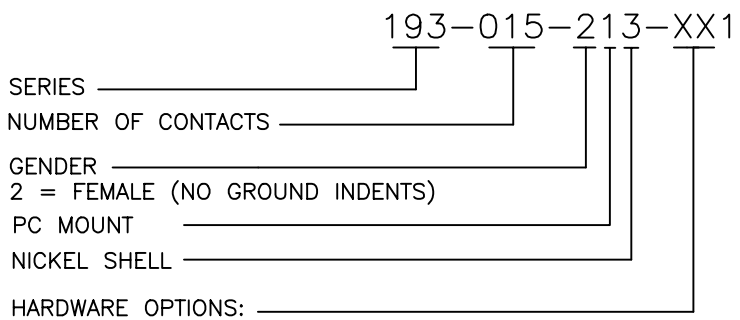


MATERIALS:

- INSULATOR: THERMOPLASTIC POLYESTER, UL94V-0 CHEMICAL RESISTANCE, COLOR BLACK
- SHELL: STEEL, NICKEL PLATED
- CONTACT: PHOSPHOR BRONZE  
GOLD FLASH IN MATING AREA  
TIN-LEAD PLATING ON TAIL ENDS

ELECTRICAL:

- CURRENT RATING: 2 AMPERES
- DIELECTRIC WITHSTANDING VOLTAGE: 1000VAC rms AT SEA LEVEL
- INSULATION RESISTANCE: 5000 MEGOHMS MIN.
- CONTACT RESISTANCE: 10 MILLIOHMS MAX.
- WORKING TEMPERATURE: -55° TO +125° C



NUMBER OF CONTACTS	"A" Inch (mm)	"B" Inch (mm)	"C" Inch (mm)	"E" Inch (mm)	"F" Inch (mm)
15	1.214 (30.84)	.984 (24.99)	.642 (16.30)	.405 (10.29)	.090 (2.29)

- 53 = 4-40 INSERT WITH BOARD LOCKS
- 56 = 4-40 STANDOFFS WITH BOARD LOCKS

	THESE DRAWINGS AND SPECIFICATIONS ARE THE PROPERTY OF NorComp AND SHALL NOT BE REPRODUCED, COPIED OR USED AS THE BASIS FOR THE MANUFACTURE OF SALE OF APPARATUS WITHOUT WRITTEN PERMISSION.		DRAWN: PAM JENKINS	DATE: 5-9-01
			CHECKED:	DATE:
<b>NorComp</b>		SCALE:	SHEET <b>1</b>	OF <b>1</b>
		DWG NO. 193-015-213-XX1		