

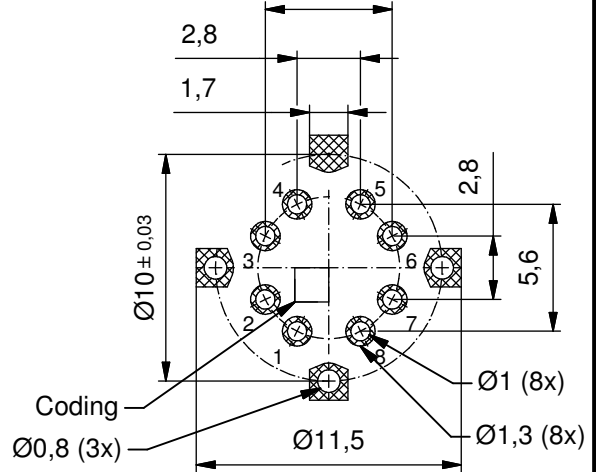
Technical specification:

| | |
|------------------------|---------------------------|
| Rated voltage: | 8pos |
| IEC 61076-2-109 | 48 V |
| Current rating: | 8pos |
| IEC 61076-2-109 | 0,5 A at 40°C |
| Transfer properties: | CAT 6A / 10 GBit/s |
| IEC 61076-2-109 | |
| Insulation resistance: | >=100 MΩ |
| IEC 60512 | |
| Pollution degree: | 3 |
| IEC 60664-1 | |
| Degree of protection: | IP 67, in mated condition |
| IEC 60529 | |
| Temperature range: | -25°C ... +95°C |
| EN 60512-11-10 | -40°C |
| EN 60512-11-4 | -40°C ... +85°C |
| Mating cycles: | >=100 |
| IEC 60512-9a | |
| Total spring force: | max 10N |

Materials:

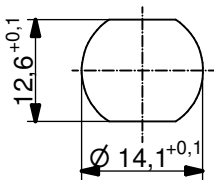
| | |
|-------------------------------|--------------------------|
| Contact: | CuZn, Ni b / Au 0,2 gal. |
| Contact carrier: | LCP GF, UL 94 V-0 |
| Shielding cross: | CuSn, Ni / sel. Sn |
| Socket housing: | CuZn, Ni |
| Sealing: | FPM |
| Suitable for reflow soldering | |
| max. 60s / 250°C | |

PCB layout proposal
5,6

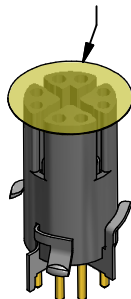
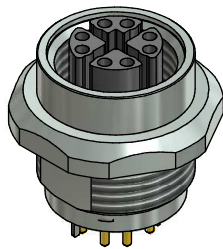


Tape & Reel - parts with adhesive pad Ø11mm

Cut-Out Front Panel



Minimum wall thickness 1,5mm, alternativ panel cut-out d=14,1



| Part no. packing unit Tape & Reel: | Part no. packing unit in bulk: | Description: | Pos |
|------------------------------------|--------------------------------|----------------------------|-----|
| 43-02758TR | 43-02758 | SAL - 12X - FK8 - X9 / THR | 8 |

| | | | | | |
|--|------------------------|---|----------|---|----------|
| DO NOT ALTER CAD DRAWING BY HAND | RoHS & REACH compliant | dim. in mm | | title: Female socket M12x1 THR,X-Cod., frontmounting, X9 dwg no: 43K1A2867 part no: see table | |
| | | drawn | 18.03.16 | | Brüntrup |
| | | appd. | 18.03.16 | | Willer |
| | | general tolerance: 0 ± 0,50mm 0,0 ± 0,25mm 0,00 ± 0,10mm * ± 1,5° | | | |
| THIS DRAWING MAY NOT BE COPIED OR REPRODUCED IN ANY WAY, AND MAY NOT BE PASSED ON TO A THIRD PARTY WITHOUT WRITTEN PERMISSION. OWNERSHIP AND COPYRIGHT OF CONEC GmbH | | | | | |