

**ECONOLATCH SINGLE ROW AND DUAL ROW WIRE TO WIRE CONNECTOR SYSTEM****1.0 SCOPE**

This specification covers the application of the Econolatch wire to wire connector system.

**TABLE OF CONTENTS****SECTION 1: PRODUCT INTRODUCTION****SECTION 2: PRODUCT SUMMARY ASSEMBLY INSTRUCTIONS****SECTION 3: MALE AND FEMALE TERMINAL INSERTION TO HOUSINGS.****SECTION 4: ECONOLATCH CONNECTOR ASSEMBLY****SECTION 5: PLUG PANEL MOUNTING INSTRUCTIONS****SECTION 6: PANEL MOUNT PLUG REMOVAL.****SECTION 7: CONNECTOR UN-MATING INSTRUCTIONS****SECTION 8: GENERAL APPLICATION NOTES****SECTION 1:  
PRODUCT INTRODUCTION**

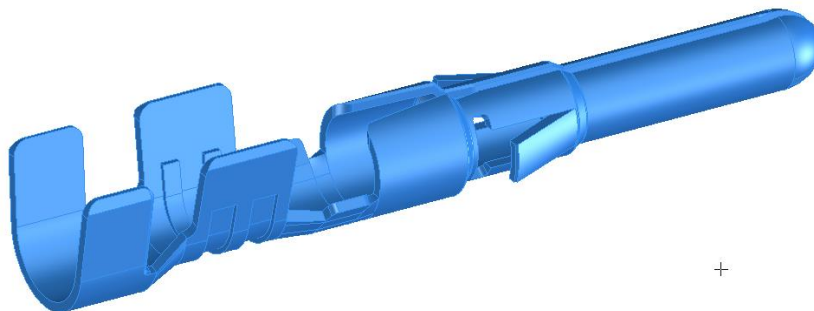
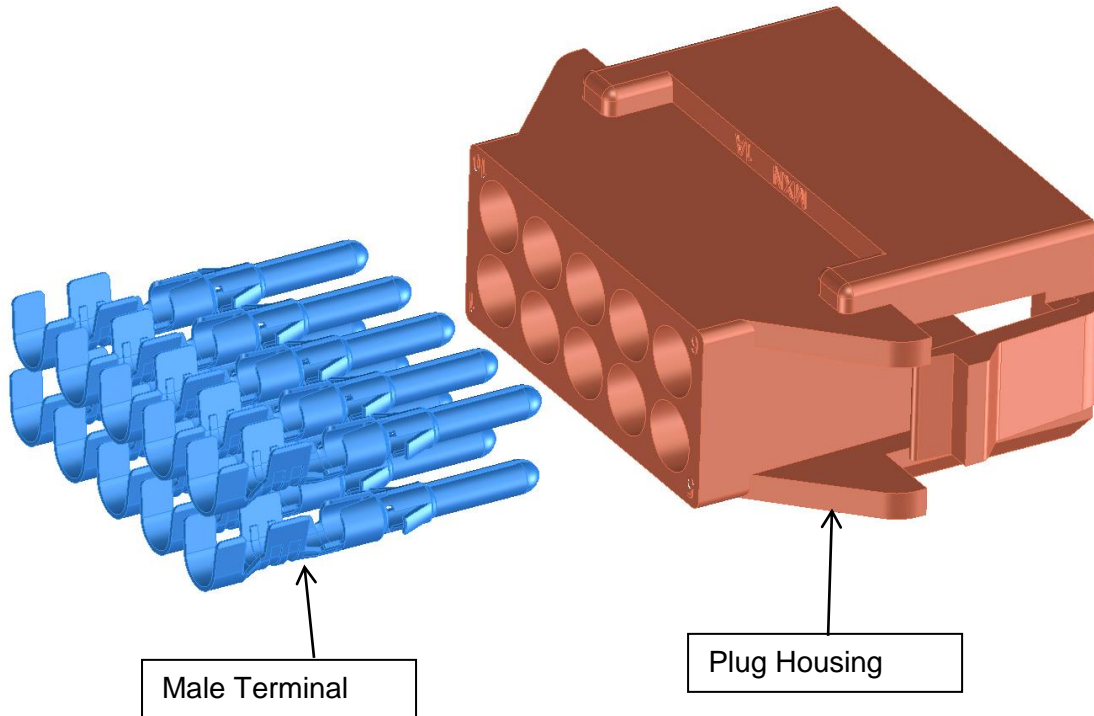
<b>Product Description</b>	<b>Series number</b>
Plug housings single row	150176
Plug housing Dual row	150177
Receptacle housings single row	150178
Receptacle housings Dual row	150179
Male Terminal	150180
Female terminal	150181

<b>REVISION:</b> <b>A</b>	<b>ECR/ECN INFORMATION:</b> EC No: 107456 DATE: 2016 / 10 / 19	<b>TITLE:</b> <b>APPLICATION SPECIFICATION ECONOLATCH CONNECTOR SYSTEM</b>	<b>SHEET No.</b> <b>1 of 9</b>
<b>DOCUMENT NUMBER:</b> <b>1501760001-AS</b>	<b>CREATED / REVISED BY:</b> snagaravenka	<b>CHECKED BY:</b> kprasad	<b>APPROVED BY:</b> kprasad

## SECTION 2:

### PRODUCT SUMMARY.

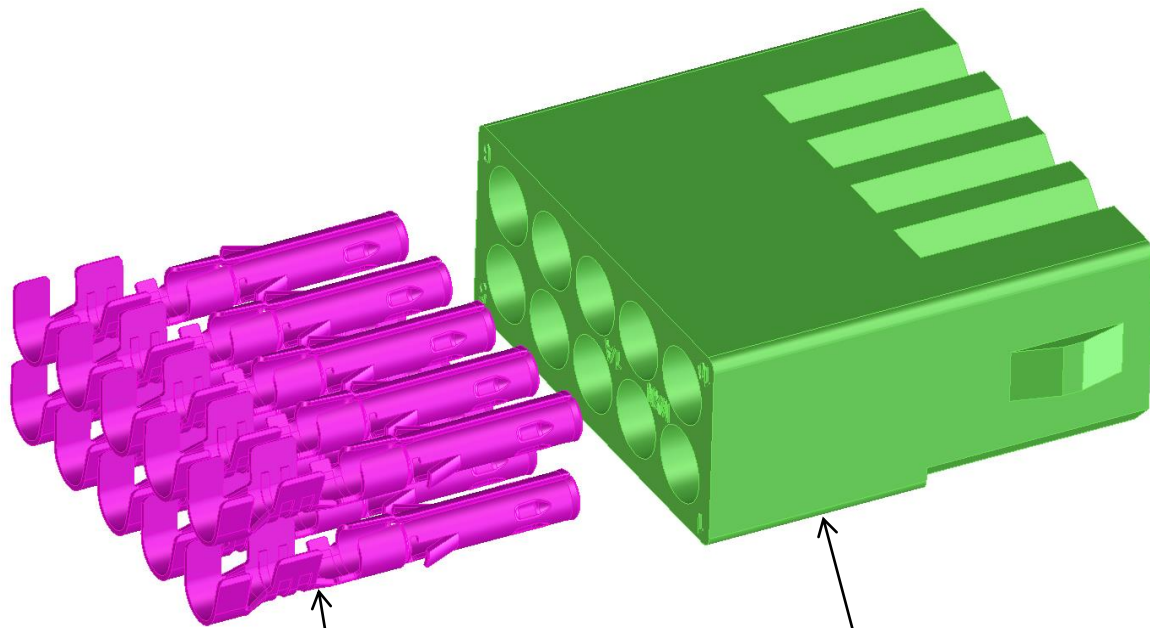
#### 1. Plug Assembly details.



Enlarged view of Male terminal for plug housing.

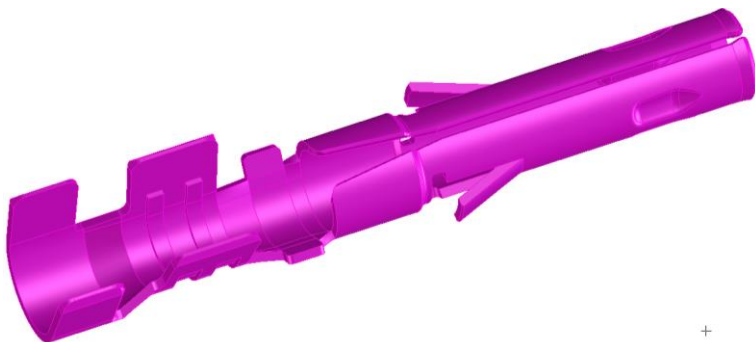
REVISION: <b>A</b>	ECR/ECN INFORMATION: EC No: 107456 DATE: 2016 / 10 / 19	TITLE: <b>APPLICATION SPECIFICATION ECONOLATCH CONNECTOR SYSTEM</b>	SHEET No. <b>2 of 9</b>
DOCUMENT NUMBER: <b>1501760001-AS</b>	CREATED / REVISED BY: <b>snagaravenka</b>	CHECKED BY: <b>kprasad</b>	APPROVED BY: <b>kprasad</b>

## 2. Receptacle Assembly details



Female terminal

Receptacle Housings



Female terminal for Receptacle housings

REVISION: <b>A</b>	ECR/ECN INFORMATION: EC No: 107456 DATE: 2016 / 10 / 19	TITLE: <b>APPLICATION SPECIFICATION ECONOLATCH CONNECTOR SYSTEM</b>	SHEET No. <b>3 of 9</b>
DOCUMENT NUMBER: <b>1501760001-AS</b>	CREATED / REVISED BY: <b>snagaravenka</b>	CHECKED BY: <b>kprasad</b>	APPROVED BY: <b>kprasad</b>

## SECTION 3:

### Terminal Insertion to Plug and Receptacle housings.

1. Hold the Plug in left hand and Terminal in Right hand, as shown in fig.1.

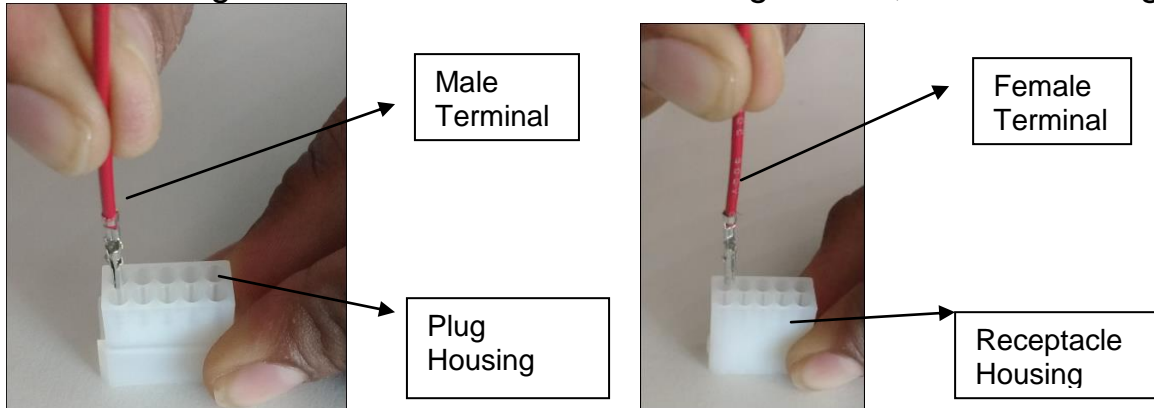


Fig.1

2. Hold the terminal vertical and Insert or push it gently in to the housig as shown in fig.2

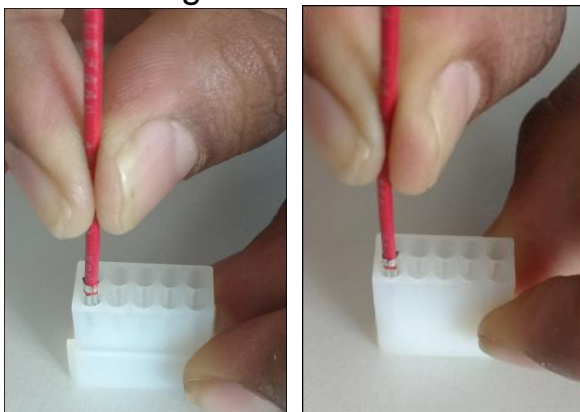


Fig.2

3. To ensure the terminal seating in housing Pull terminal back gently in the housing as shown in Fig.3.

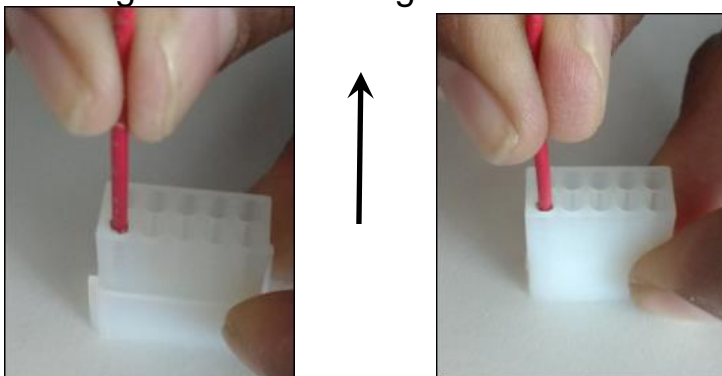


Fig. 3

REVISION: <b>A</b>	ECR/ECN INFORMATION: EC No: 107456 DATE: 2016 / 10 / 19	TITLE: <b>APPLICATION SPECIFICATION ECONOLATCH CONNECTOR SYSTEM</b>	SHEET No. <b>4 of 9</b>
DOCUMENT NUMBER: <b>1501760001-AS</b>	CREATED / REVISED BY: <b>snagaravenka</b>	CHECKED BY: <b>kprasad</b>	APPROVED BY: <b>kprasad</b>

4. Insert terminals on all rows and complete the insertion for all circuits as shown in fig 4.



Fig.4

5. Reverse the assembled housing and carry out the visual inspection for Terminal position and seating as shown in Fig. 5.

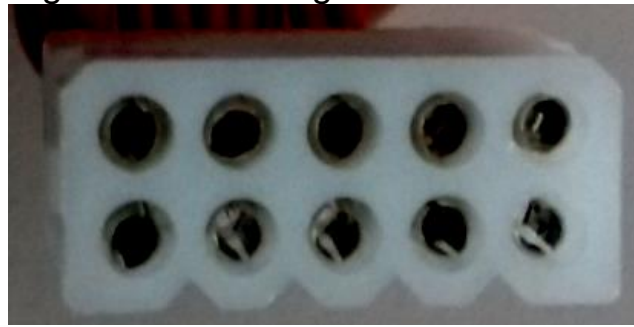


Fig.5

REVISION: <b>A</b>	ECR/ECN INFORMATION: EC No: 107456 DATE: 2016 / 10 / 19	TITLE: <b>APPLICATION SPECIFICATION ECONOLATCH CONNECTOR SYSTEM</b>	SHEET No. <b>5 of 9</b>
DOCUMENT NUMBER: <b>1501760001-AS</b>	CREATED / REVISED BY: <b>snagaravenka</b>	CHECKED BY: <b>kprasad</b>	APPROVED BY: <b>kprasad</b>

## Section 4: Econolatch Connector Assembly

1. Hold the plug connector assembly and receptacle connector assembly as shown in below figures. Align connector polarity features in a same Axis and begin mating process along the same axis.



2. Press the receptacle housing in to the Plug housing until locks as shown in fig.11 and 12.

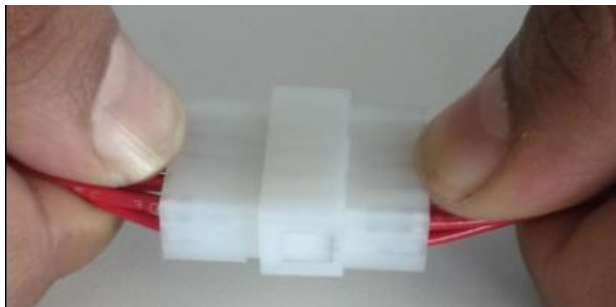


Fig.11

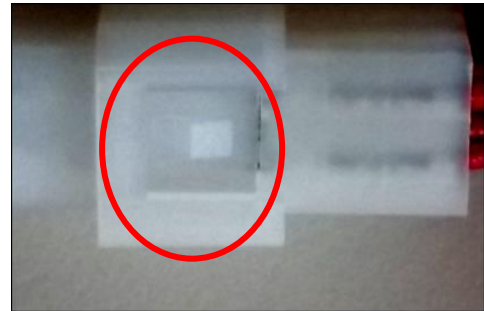


Fig.12

REVISION: <b>A</b>	ECR/ECN INFORMATION: EC No: 107456 DATE: 2016 / 10 / 19	TITLE: <b>APPLICATION SPECIFICATION ECONOLATCH CONNECTOR SYSTEM</b>	SHEET No. <b>6 of 9</b>
DOCUMENT NUMBER: <b>1501760001-AS</b>	CREATED / REVISED BY: <b>snagaravenka</b>	CHECKED BY: <b>kprasad</b>	APPROVED BY: <b>kprasad</b>

## Section 5: Plug Panel Mounting Instructions

1. Make the panel cut out as per the sales drawing.
2. Hold the Plug assy and assemble in to the Panel, Refer the below fig.14 and Fig.14a

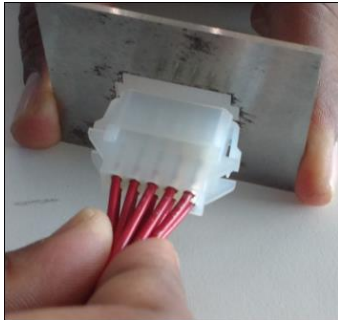


Fig-14

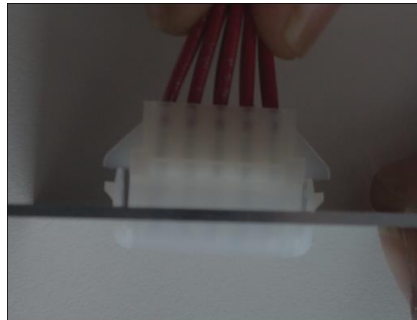


Fig14a

3. Make sure plug assembly is latched with panel refer the below fig.15 and Fig.15a and assemble the Receptacle housing.

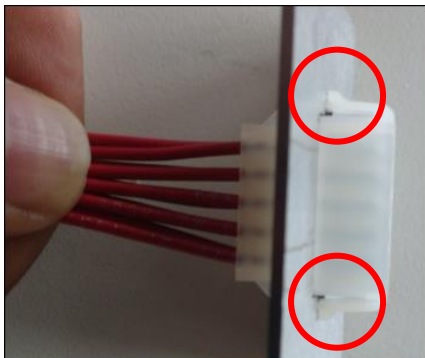


Fig-15

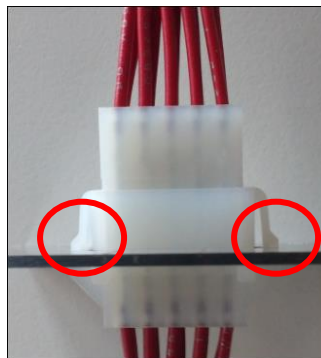
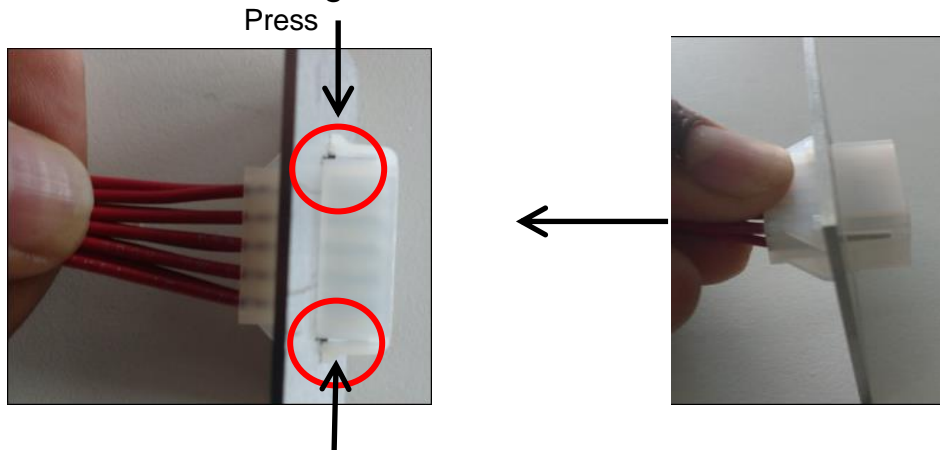


Fig15a

REVISION: <b>A</b>	ECR/ECN INFORMATION: EC No: 107456 DATE: 2016 / 10 / 19	TITLE: <b>APPLICATION SPECIFICATION ECONOLATCH CONNECTOR SYSTEM</b>	SHEET No. <b>7 of 9</b>
DOCUMENT NUMBER: <b>1501760001-AS</b>	CREATED / REVISED BY: <b>snagaravenka</b>	CHECKED BY: <b>kprasad</b>	APPROVED BY: <b>kprasad</b>

## Section 6: Panel mount Plug removal.

1. Press the both side latch and hold plug and gently pull it from the Panel refer the below figure.



## Section 7: Connector un-mating instructions

1. Hold the Plug and receptacle assembly to disengage and pull the assembly as Shown in Fig.16 and Fig.16a.

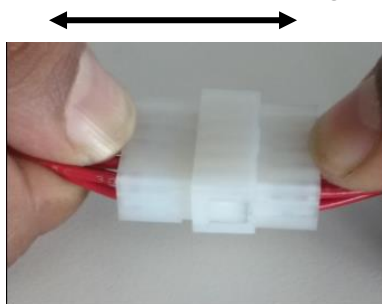


Fig.16

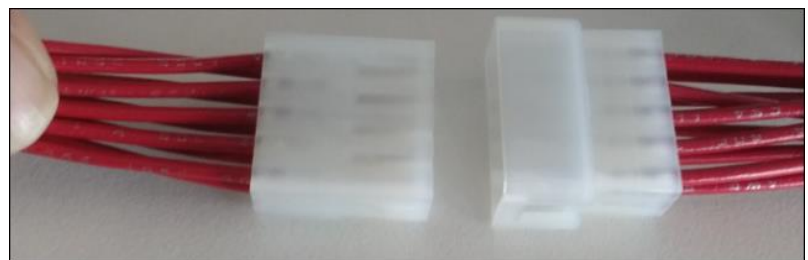


Fig.16a

REVISION: <b>A</b>	ECR/ECN INFORMATION: EC No: 107456 DATE: 2016 / 10 / 19	TITLE: <b>APPLICATION SPECIFICATION ECONOLATCH CONNECTOR SYSTEM</b>	SHEET No. <b>8 of 9</b>
DOCUMENT NUMBER: <b>1501760001-AS</b>	CREATED / REVISED BY: <b>snagaravenka</b>	CHECKED BY: <b>kprasad</b>	APPROVED BY: <b>kprasad</b>



**Section 8:****General application notes**

Appearance:

Parts conform to class "B" requirements of cosmetic specification PS-45499-002

<b>REVISION:</b> <b>A</b>	<b>ECR/ECN INFORMATION:</b> EC No: <b>107456</b> DATE: <b>2016 / 10 / 19</b>	<b>TITLE:</b> <b>APPLICATION SPECIFICATION ECONOLATCH CONNECTOR SYSTEM</b>	<b>SHEET No.</b> <b>9 of 9</b>
<b>DOCUMENT NUMBER:</b> <b>1501760001-AS</b>	<b>CREATED / REVISED BY:</b> <b>snagaravenka</b>	<b>CHECKED BY:</b> <b>kprasad</b>	<b>APPROVED BY:</b> <b>kprasad</b>