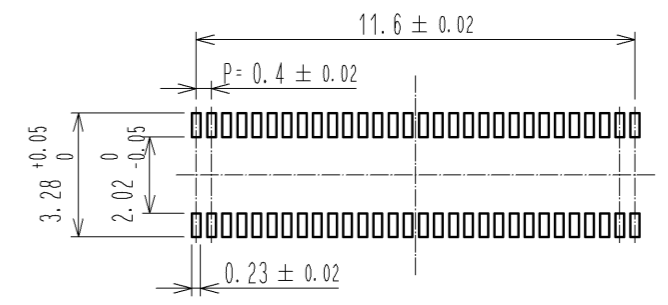
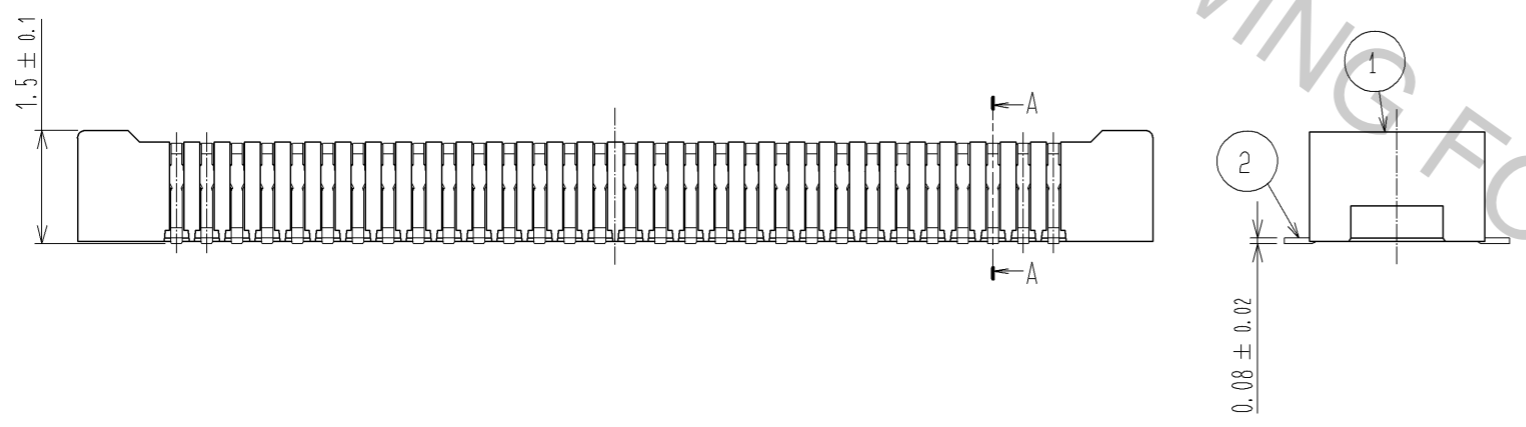
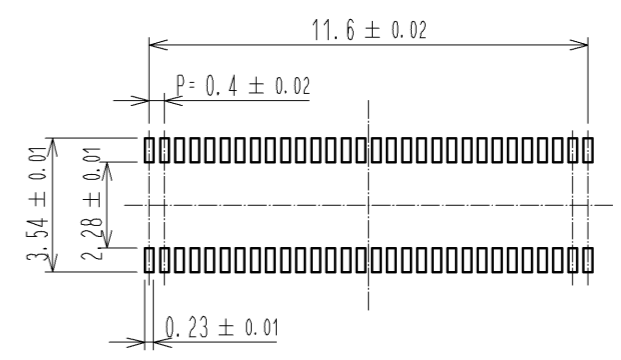


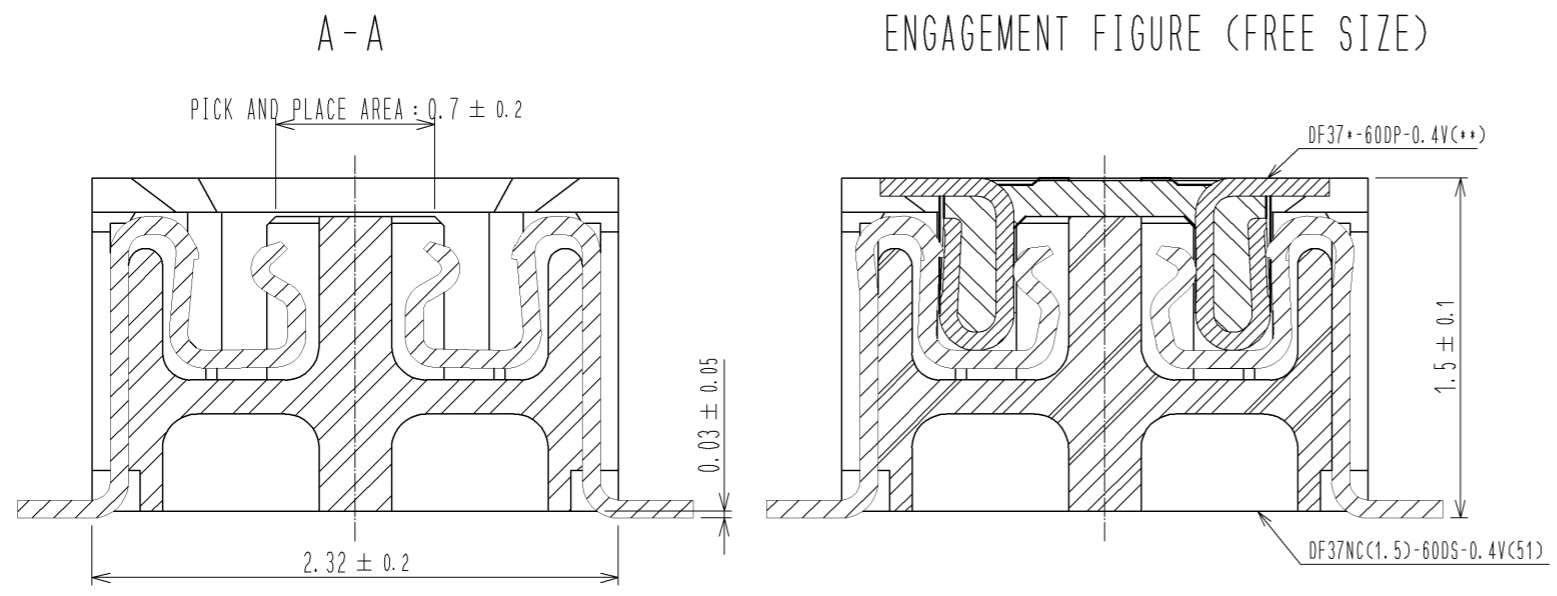
◆ RECOMMENDED PCB LAYOUT  
(MOUNTING SURFACE SIDE)



◆ RECOMMENDED METAL MASK DIMENSIONS  
METAL MASK THICKNESS : 0.10mm



ENGAGEMENT FIGURE (FREE SIZE)

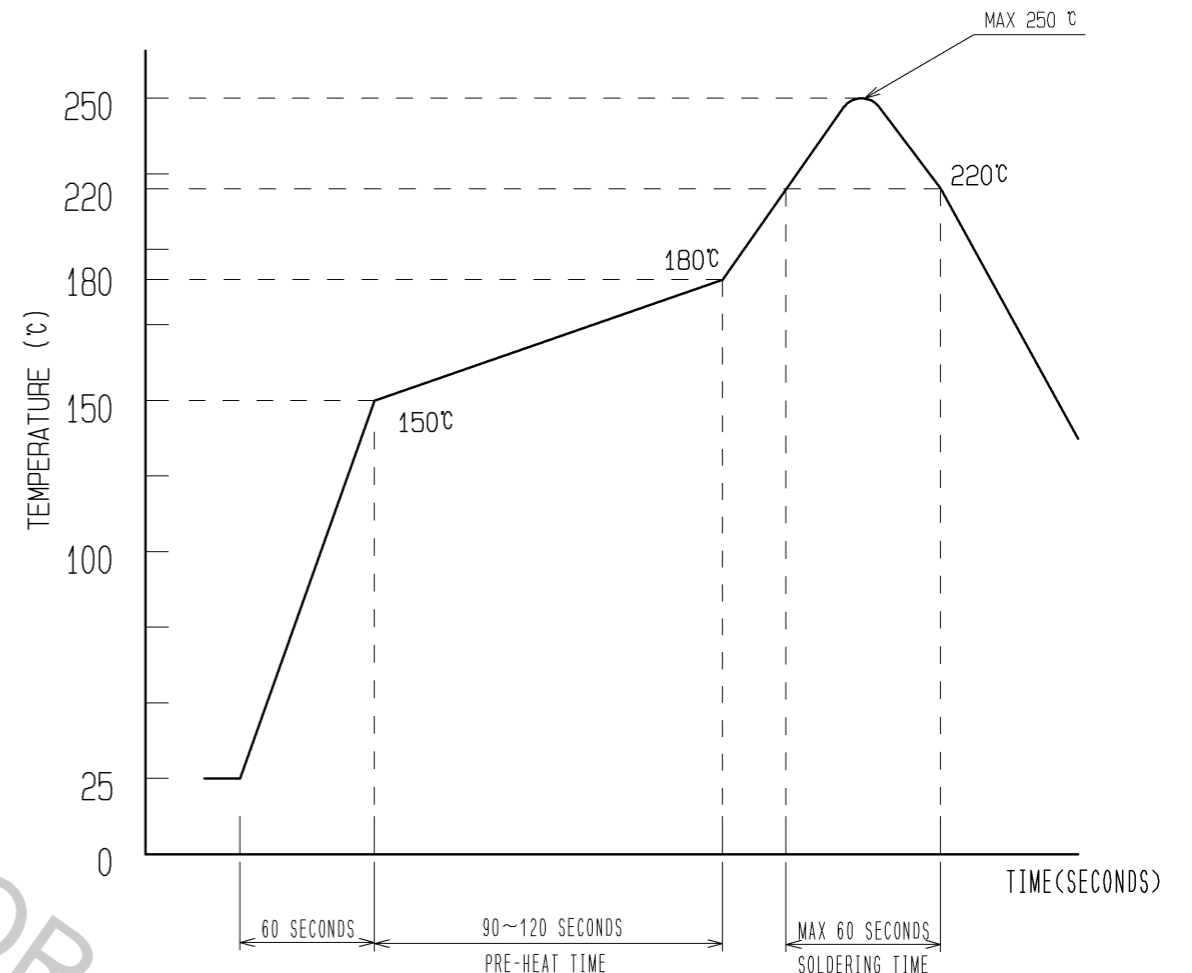
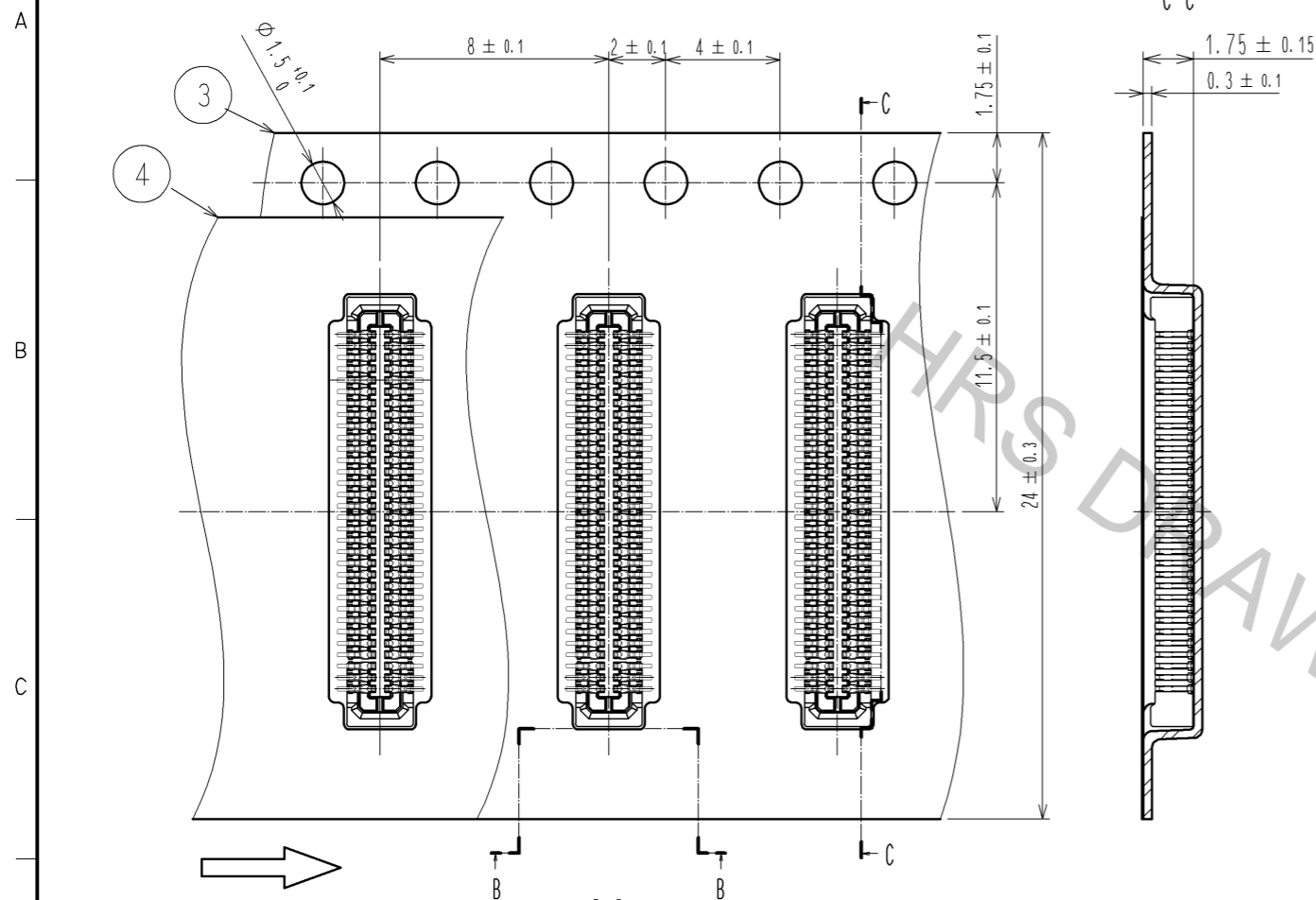


- NOTES 1. ALL LEADS CO-PLANARITY SHALL BE 0.1mm MAX.  
 2 CONTACT PLATING SPECIFICATIONS.  
 CONTACT AREA : GOLD 0.05 μm MIN.  
 SMT LEAD : GOLD 0.05 μm MIN.  
 UNDERPLATING : NICKEL 1 μm MIN.  
 (SURFACE : SEALING)

3	PS	CLEAR(EMBOSSD CARRIER TAPE)	6	PS	CLEAR(REINFORCEING COLLAR)			
2	PHOSPHOR BRONZE	2	5	PS	BLACK(PLASTIC REEL)			
1	LCP	UL94V-0, BLACK	4	POLYESTER	CLEAR(COVER TAPE)			
NO.	MATERIAL	FINISH, REMARKS	NO.	MATERIAL	FINISH, REMARKS			
UNITS	mm	SCALE	FREE	COUNT	DESCRIPTION OF REVISIONS	DESIGNED	CHECKED	DATE
HRS		HIROSE ELECTRIC CO., LTD.		APPROVED : MO. ISHIDA	14. 10. 27	DRAWING NO. EDC3-344458-01		
				CHECKED : TS. MIYAZAKI	14. 10. 27	PART NO. DF37NC(1.5)-60DS-0.4V(51)		
				DESIGNED : NY. YAMASHIRO	14. 10. 27	CODE NO. CL684-3613-9-51		
				DRAWN : KR. AJITO	14. 10. 27	1/2		

EMBOSSED CARRIER TAPE PACKAGING (FREE SIZE)

RECOMMENDED REFLOW TEMPERATURE PROFILE USING LEAD-FREE SOLDER PASTE.



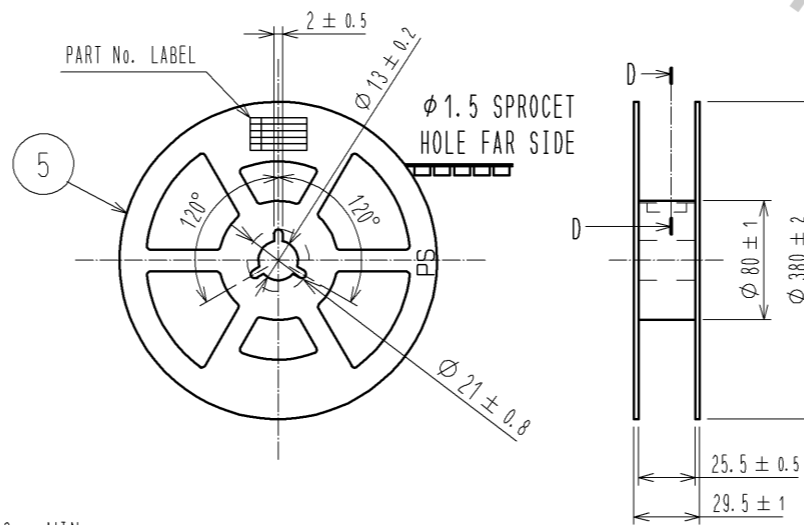
DIRECTION OF UNREELING

STYLE AND DIMENSION OF REEL (FREE SIZE)

- 1) REFLOW TIME  
REFLOW METHOD: IR REFLOW  
NUMBER OF REFLOW CYCLES: 2 CYCLES MAX.  
DURATION ABOVE 220 °C, 60 SEC. MAX.  
(PEAK TEMPERATURE: 250°C MAX.)
- 2) PRE-HEAT TIME  
PRE-HEAT TEMPERATURE(MIN) :150 °C  
PRE-HEAT TEMPERATURE(MAX) :180 °C  
PRE-HEAT TIME : 90~120 sec.

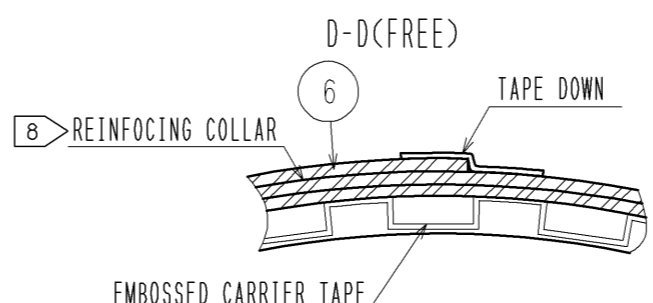
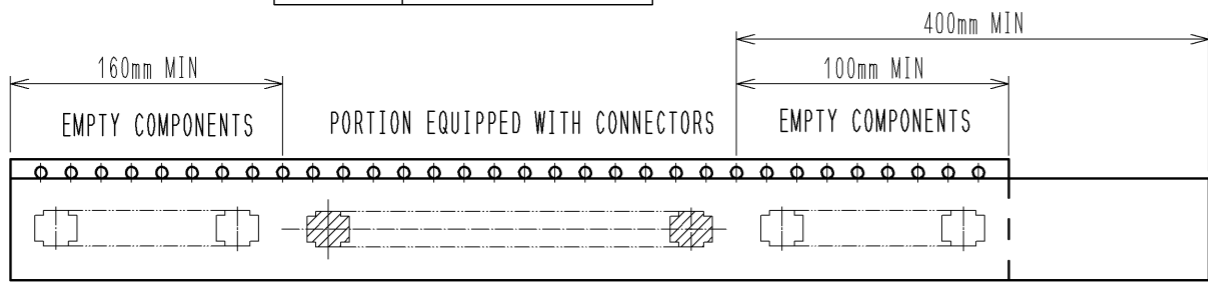
DETAIL OF PART NO. LABEL

SUPPLIER	
QUANTITY	
PART NO.	
CODE NO.	
DATE OF MANUFACTURED	
製造年月日	年 月 日
製品コード	CL684-3613-9-51
製品名	DF37NC(1.5)-60DS-0.4V(51)
数量	5000個
納入者	ヒロセ電機(株)



NOTES 3 THIS TEMPERATURE PROFILE IS PER THE CONDITIONS SHOWN ABOVE. ADDITIONAL FACTORS, SUCH AS SOLDER PASTE TYPE, PCB SIZE AND OTHER MOUNTED COMPONENTS COULD AFFECT THE PROFILE. THEREFORE, A THOROUGH EVALUATION OF MOUNTING CONDITION IS REQUIRED PRIOR TO PRODUCTION. TEMPERATURE IS MEASURED AT CONTACT LEAD.

- 4. PER REEL 5000 CONNECTORS.
- 5. THE DIMENSIONS IN PARENTHESES ARE FOR REFERENCE.
- 6 REFER TO JIS C 0806, IEC 60286-3 (PACKING OF COMPONENTS FOR AUTOMATIC HANDLING)
- 7 DETAIL OF PART NO. LABEL IS WRITTEN IN JAPANESE.
- 8 AFTER FINISHING THE REELING, COVER THE SURFACE WITH 2 METERS OF REINFORCING COLLAR AND THE DOWN AT THE END.



TAPING(FREE)

<b>HRS</b>	DRAWING NO.	EDC3-344458-01
	PART NO.	DF37NC(1.5)-60DS-0.4V(51)
	CODE NO.	CL684-3613-9-51
		$\triangle 2/2$