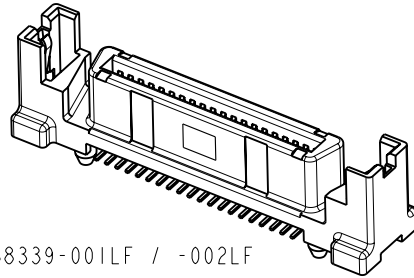
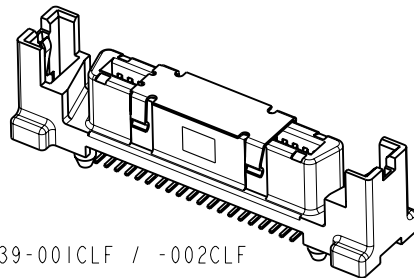


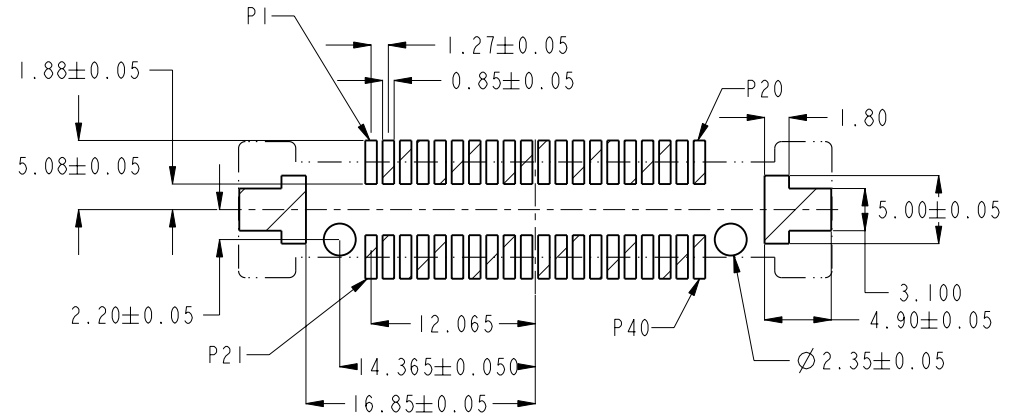
PRODUCT NO	REMARKS
10038339-001LF	WITHOUT PICK-UP CAP
10038339-001CLF	WITH PICK-UP CAP
10038339-002LF	WITHOUT PICK-UP CAP
10038339-002CLF	WITH PICK-UP CAP



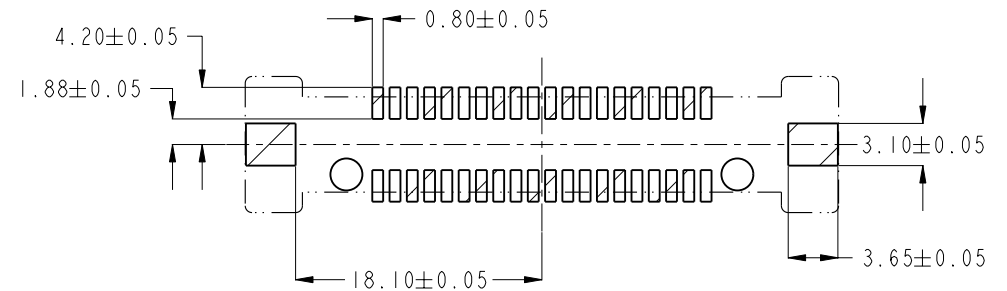
10038339-001LF / -002LF



10038339-001CLF / -002CLF



RECOMMENDED PCB LAYOUT FOR 10038339-001LF & -001CLF



RECOMMENDED PCB LAYOUT FOR 10038339-002LF & -002CLF

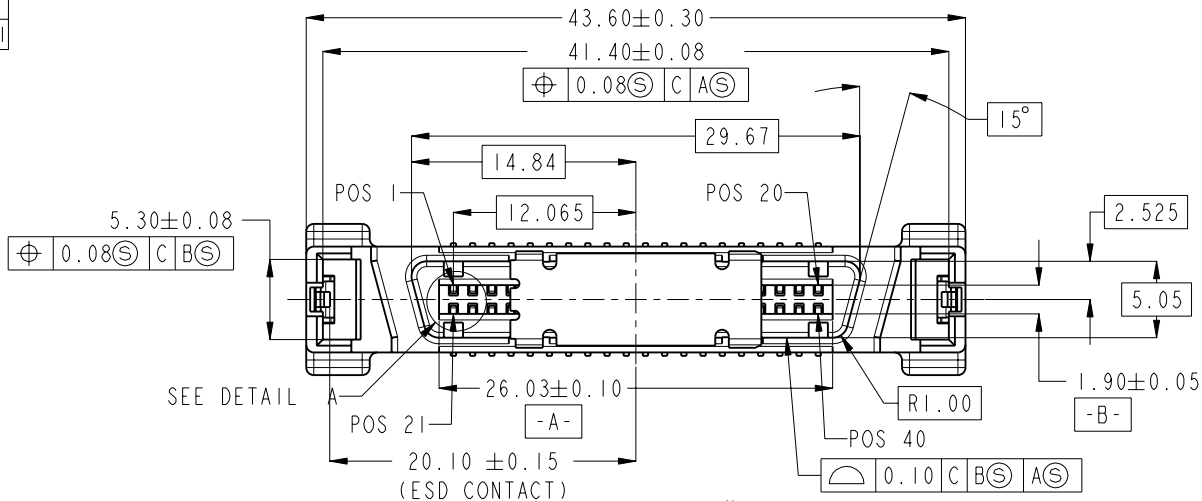
NOTES:

- MATERIAL :
HOUSING : HIGH TEMPERATURE THERMOPLASTIC
CONTACTS : COPPER ALLOY
ESD CONTACTS : COPPER ALLOY
- PLATING :
CONTACTS : 1.27um/50u" MIN NICKEL UNDERPLATE
0.76um/30u" MIN GOLD AT CONTACT AREA
2.54um/100u" MIN TIN AT SOLDER TAIL
ESD CONTACTS : 1.27um/50u" MIN NICKEL UNDERPLATE
2.54um/100u" MIN TIN AT OVERALL
- THE HOUSING WILL WITHSTAND EXPOSURE TO 260°C PEAK TEMPERATURE FOR 10 SECONDS IN A CONVECTION, INFRA-RED OR VAPOR PHASE REFLOW OVEN.
- THIS PRODUCT MEETS EUROPEAN UNION DIRECTIVES AND OTHER COUNTRY REGULATIONS AS DESCRIBED ON GS-22-008.

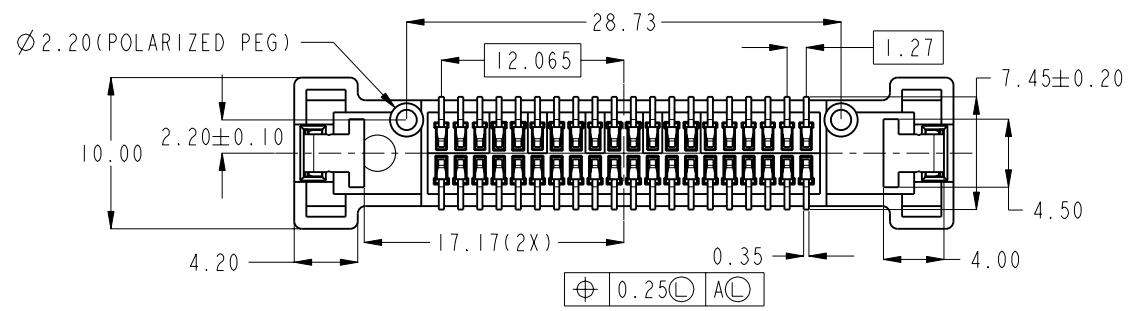
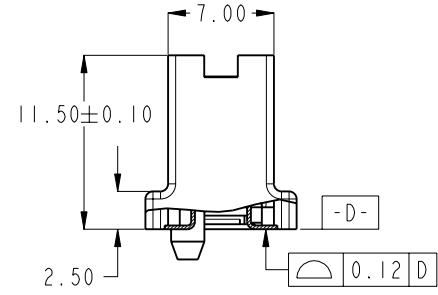
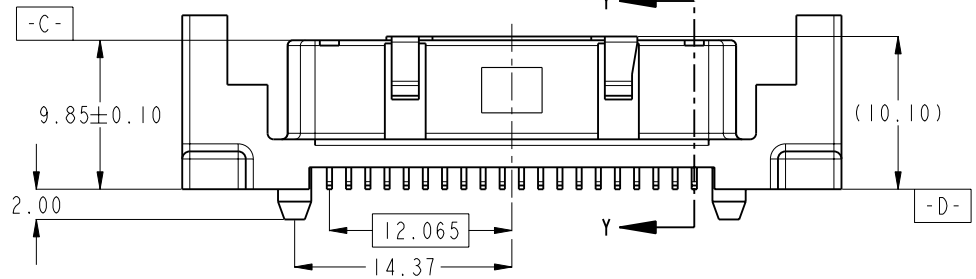
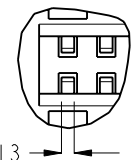
rev	ecn no	dr	date
A	S05-0136	TAY	2005-05-11
B	S05-0216	TAY	2005-08-01
C	S05-0275	TAY	2005-09-22
D	S07-0042	TAY	2007-02-07
E	S10-0071	TAY/KP	2010-03-30
-	-	-	-
-	-	-	-

www.fciconnect.com			surface ASME Y14.5	<input checked="" type="checkbox"/> tolerance std ASME Y14.5	projection MM	size A4		Scale 2:1
Dr	KP TAY	2007-02-07	TOLERANCES UNLESS OTHERWISE SPECIFIED		<input type="checkbox"/>	ECN S10-0071		
Eng	KP TAY	2010-03-30	ANGULAR	LINEAR	0.X ±0.35	Spec ref -		
Chr	KP TAY	2010-03-30	0° ±2°		0.XX ±0.25			
Appr	JOEY NG	2010-03-30	Product family		0.XXX ±0.13			
FCI			SCA-2 & FIBER CHANNEL			10038339		Rev. E
			RECEPT, SMT			CUSTOMER		sheet 1 of 2
			catalog no					

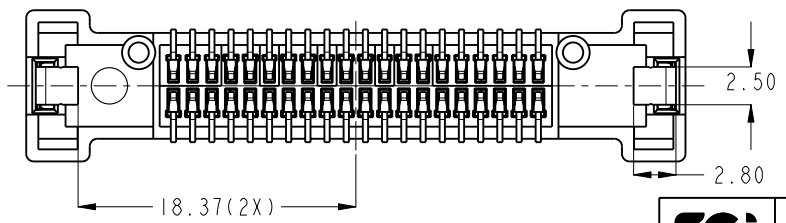
PRODUCT NO
REFER TO PAGE I



DETAIL A
SCALE 4:1



10038339-001LF / -001CLF



10038339-002LF / -002CLF

FCI
Copyright FCI.

	TITLE SCA-2 & FIBER CHANNEL RECEPT, SMT	dwg no 10038339	Rev. E
	catalog no	CUSTOMER	sheet 2 of 2