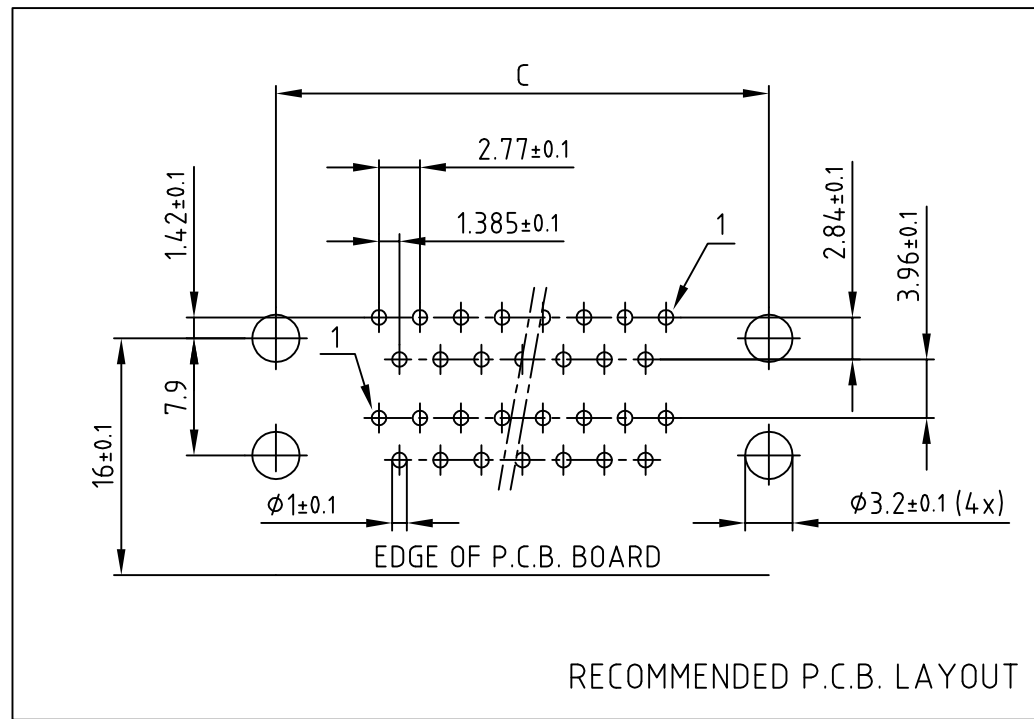
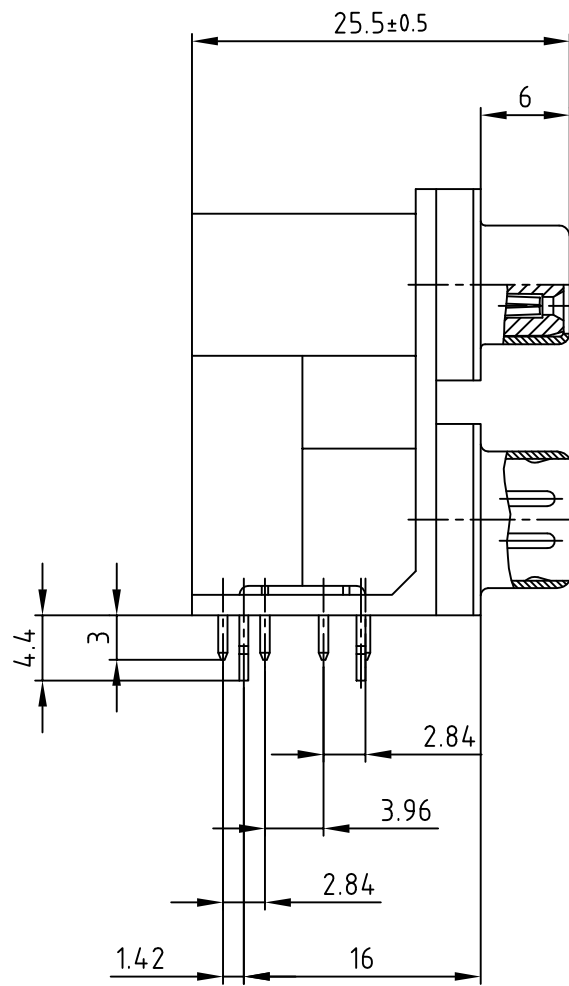
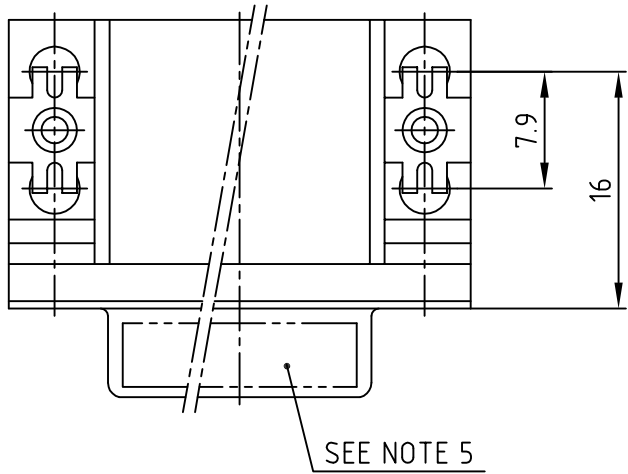
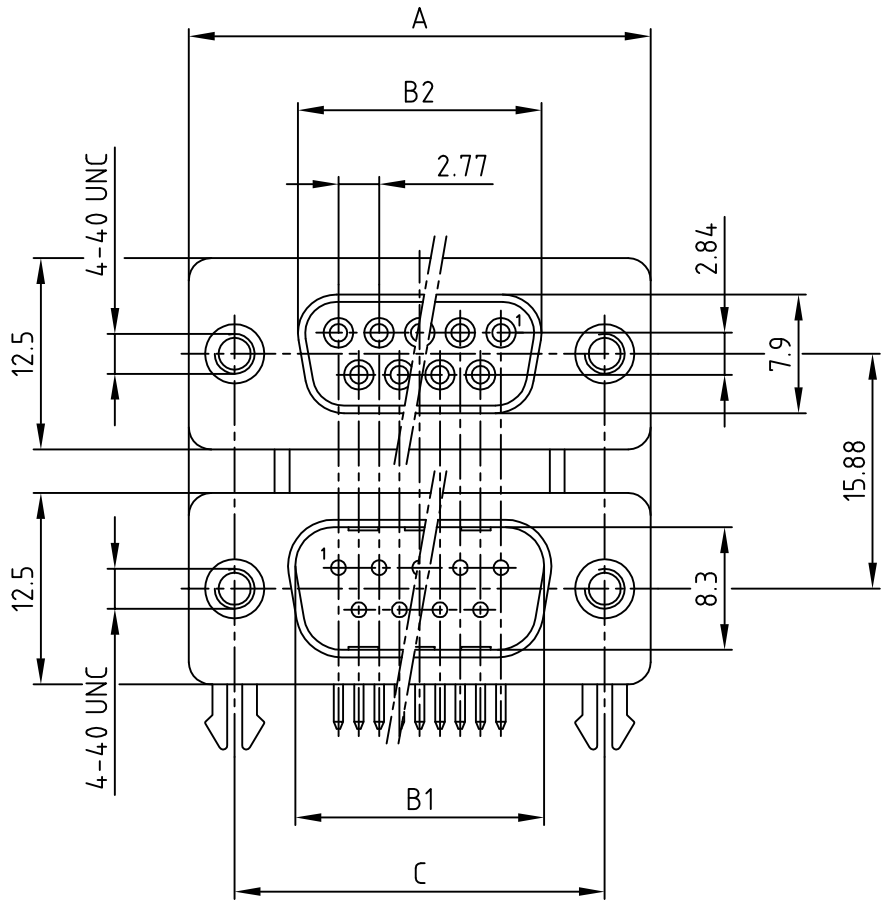


used for: D-SUB DUAL-PORT



No. of pos.	A	B1	B2	C	Part NO.
2x 9	30.80	16.92	16.30	25.00	DLS1SP5AN21X
2x15	39.20	25.25	24.60	33.30	DLS2SP5AN21X
2x25	53.10	38.96	38.30	47.10	DLS3SP5AN21X
2x37	69.40	55.42	54.80	63.50	DLS4SP5AN21X

Directive 2002/95/EC RoHS compliant

NOTES:

- METALSHELLS: STEEL; min. 320µin TIN
- INSULATORS: PBT GF UL 94 V-0, BLACK
- CONTACTS: COPPER ALLOY
PLATING MATING AREA: GOLD FLASH
- MAXIMUM TORQUE VALUE FOR THREAD: 6 in.LB
- CONNECTOR IS PART MARKED: PART-NO. CONEC ABC

APPROVAL # FREIGABE # DEBLOCAGE # AUTOR/ZACION # APPROVAL	
CUSTOMER APPROVAL DATE:	
NAME:	TITLE:
COMPANY NAME:	
APPROVAL # FREIGABE # DEBLOCAGE # AUTOR/ZACION # APPROVAL	

THIS DRAWING MAY NOT BE COPIED OR REPRODUCED IN ANY WAY, AND MAY NOT BE PASSED ON TO A THIRD PARTY WITHOUT WRITTEN PERMISSION. OWNERSHIP AND COPYRIGHT OF CONEC GmbH DO NOT ALTER CAD DRAWING BY HAND			
1 x b	Ä3442	28.09.2009	Petker
a	Origin		
rev.	description	date	name

tolerance		scale:	2:1
		material:	SEE NOTES
		dim. in mm	
		2004	date
		18.05.	name
		18.05.	Lehmenkühler
			Mickenbecker
		norm	
		d-old	
		title:	
DUAL-PORT 15.88mm Female / Male 2x9pos. - 2x37pos. with 4-40 UNC insert and clip			
		dwg no:	AutoCAD 2004
			DIN-A
			3
			sh:1/1
		part no:	SEE TABLE

