

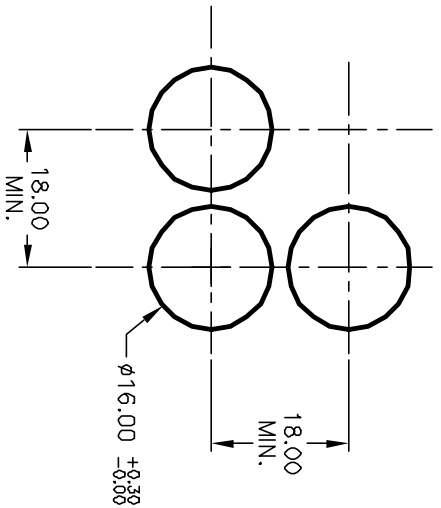
1.0 ± 0.2  
3.0 ± 0.4  
a-L-b (+)

PARTS LIST			
ITEM	QTY.	PART NO.	PART DESCRIPTION
1	1	F040006	D16 EE R1 1
2	1	F050418	50-004-18
3	1	F052105	50-001-05 (Transparent Wht lens)

SPST  
CONTACT CONFIGURATION

NOTES:

1. ALL DIMENSIONS IN MM
2. GENERAL TOLERANCE: X.X=±0.4  
X.XX=±0.25
3. RATINGS: 5A @250V AC  
8A @125V AC  
UL, VDE, CSA, Semko, Nemko, Demko, Firmko Approved
4. LAMP VOLTAGE: 6V DC YELLOW L.E.D.
5. CONTACT MATERIAL:  
COPPER ALLOY W/Silver Plating



RECOMMENDED PANEL MOUNTING  
SCALE 1:1

REV.	ECN No.	DESCRIPTION	DATE	CHKD
A	12683	RELEASED FOR PRODUCTION	1/02/03	CB

TITLE	SCALE	DATE	DR	DWG	REV
D16 EE R11 H YEL WHT TRANSPARENT/CONCAVE LENS	1.5:1	1/02/03	CB	XF0531P	A

**E-SWITCH®**

THE INFORMATION CONTAINED IN THIS DOCUMENT IS PROPRIETARY TO E-SWITCH AND IS NOT TO BE COPIED OR TRANSMITTED