

## Using the Evaluation Board

The ISL6440 is a high performance triple-output controller offering control and protection features for 2 synchronous buck PWMs.

The ISL6440 evaluation board highlights the operation of the IC in an embedded DC/DC converter application. Table 1 shows the available evaluation board.

**TABLE 1. EVALUATION BOARDS**

BOARD NAME	IC	PACKAGE
ISL6440EVAL1Z	ISL6440IAZ	24 Ld QSOP

## Recommended Test Equipment

- A 12V, 5A capable power supply
- An electronic load
- Four channel oscilloscope with probes
- Precision digital multimeters

## Power and Load Connections

**Input Voltage** - To connect a +12V power supply to the evaluation board, connect the positive lead of the power supply to VIN (P1) post and the ground lead of the supply to the GND (P2) post.

## Output Adjustment

Change the respective output voltage feedback resistors to modify the output voltage:

$$V_{OUT1} = 0.8 \cdot \left( 1 + \frac{R_5}{R_6} \right) \quad V_{OUT2} = 0.8 \cdot \left( 1 + \frac{R_7}{R_8} \right) \quad (\text{EQ. 1})$$

## Soft-start and Shutdown

The soft-start capacitors can be adjusted for sequencing of the output voltages, PWM startup tracking, and/or to adjust the startup current required to charge the output capacitors.

$$t_{SS(PWM1)} = C_5 \cdot \frac{0.8V}{5\mu A} \quad t_{SS(PWM2)} = C_3 \cdot \frac{0.8V}{5\mu A} \quad (\text{EQ. 2})$$

To independently shutdown the PWMs, the SD1 or SD2 pin can be pulled to GND using the on board posts, P7 and P8 respectively.

## Power Good

When both PWMs are within  $\pm 10\%$  of their set value, the PGOOD signal will go high. The open drain PGOOD pin is pulled HIGH to VCC\_5V on the board. The PGOOD circuitry monitors the FBx pin of each regulated output to determine if the outputs are in regulation. PGOOD can be monitored at post P9.

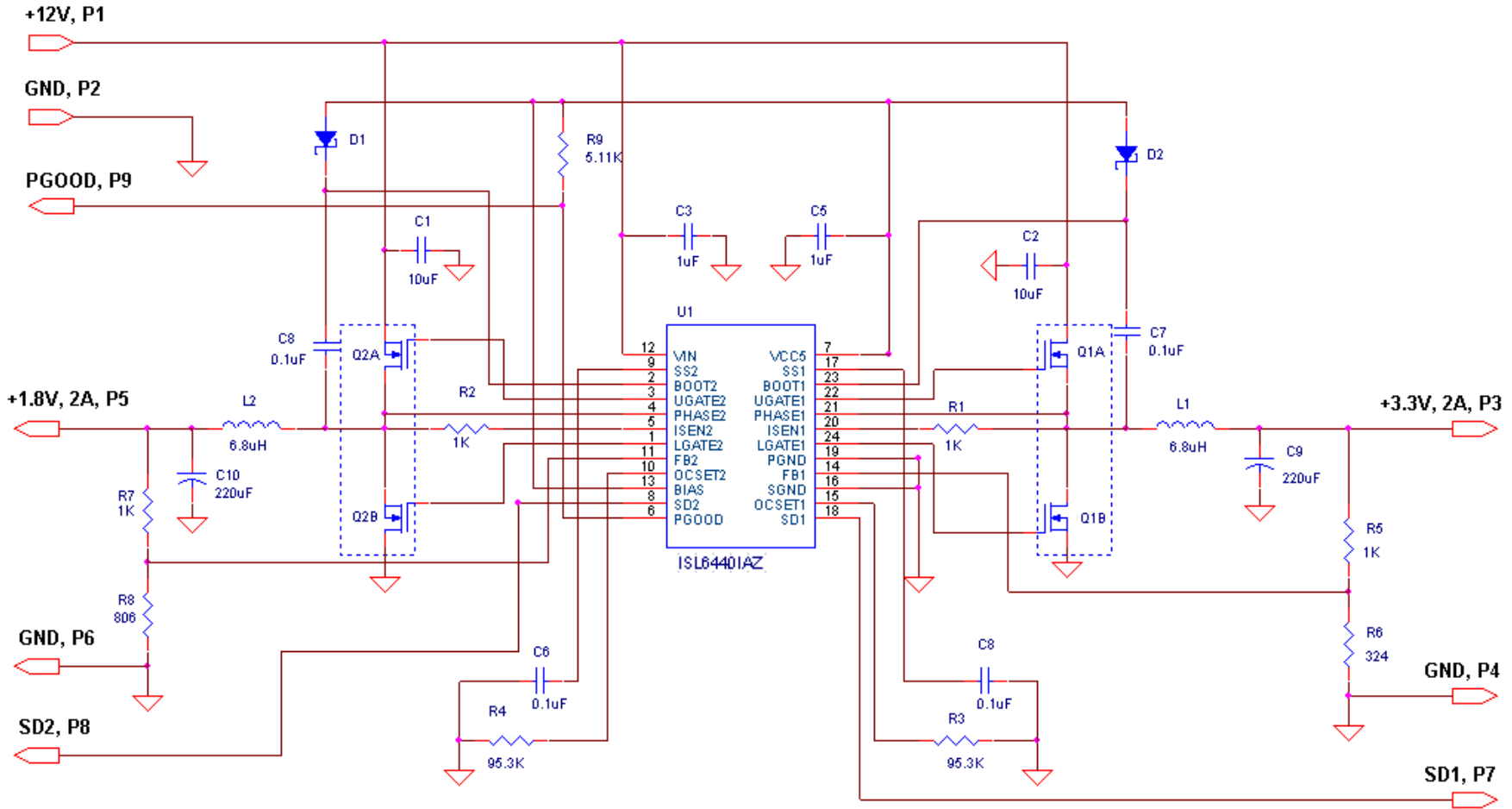
## Overcurrent Protection

The overcurrent thresholds can be adjusted on the ISL6440 evaluation board. The current sense resistors,  $I_{SENSE}$ , are set at 1.0k. The overcurrent set resistor is 95.3k. The overcurrent trip point can be adjusted by modifying  $R_{OCSET}$ , R3 and R4:

$$R_{OCSET} = \frac{7 \cdot R_{CS}}{I_{OC} \cdot r_{DS(ON)}} \quad (\text{EQ. 3})$$

$R_{OCSET}$  is the overcurrent set resistor,  $R_{CS}$  is the current sense resistor,  $I_{OC}$  is the desired overcurrent trip point, and  $r_{DS(ON)}$  is the on resistance of the respective PWM's lower MOSFET. Refer to the ISL6440 datasheet for more information on how to select the current sense and overcurrent select resistors.

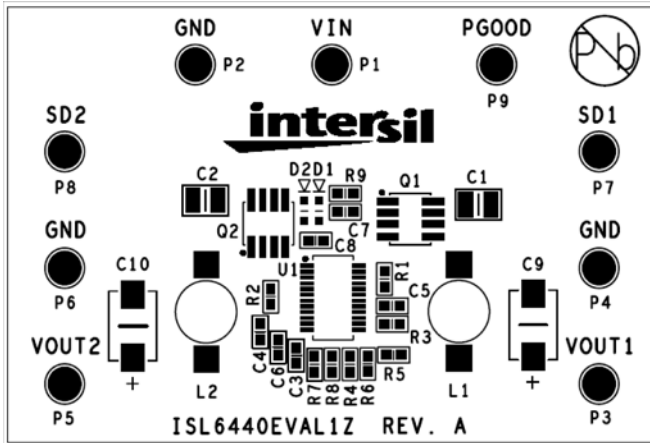
# ISL6440EVAL1Z Schematic



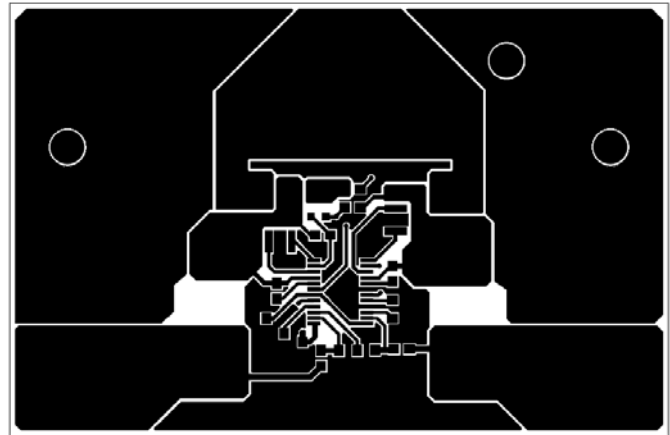
**ISL6440EVAL1Z Bill of Materials**

ITEM	REFERENCE	QTY	PART NUMBER	PART TYPE	DESCRIPTION	VENDOR
1	P1-P9	9	1514-2	Test Point	Turret 0.281 Height	Keystone
2	D1, D2	2	BAT54HT1G	Diode, Schottky	30V, 200mA	On Semi
3	C4	1	H1045-00105-6R3V10-T	Cap, Ceramic, X5R	1 $\mu$ F, 10V, 0603, X5R	Panasonic
4	C9, C10	2	10TPB220M	Cap, POSCAP	220 $\mu$ F, 10V	Sanyo
5	C1, C2	2	C3225X7R1E106	Cap, Ceramic, 1210	10 $\mu$ F, 10%, 25V, 1210, X7R	TDK
6	L1, L2	2	DO3316P-682ML-T	SMT Power Inductor	6.8 $\mu$ H, $\pm$ 20%, 4.6A, 27m $\Omega$	Coilcraft
7	C3	1	H1045-00105-16V20-T	Capacitor, Ceramic	1 $\mu$ F, 20%, 16V, Y5V, 0603	MURATA
8	Q1, Q2	2	FDS6912A	Dual NFET	6A, 30V, Dual NFET, SO8	Fairchild
9	C5, C6, C7, C8	4	H1045-00104-25V10-T	Cap, Ceramic, 0603	0.1 $\mu$ F, 10%, 6.3V	MURATA/Generic
10	R1, R2, R5, R7	5		Resistor, Film	1k $\Omega$ , 0603, 1%, 1/16W	Any
11	R6	1		Resistor, Film	324 $\Omega$ , 0603, 1%, 1/16W	Any
12	R3, R4	1		Resistor, Film	95.3k $\Omega$ , 0603, 1%, 1/16W	Any
13	R9	1		Resistor, Film	5.11k $\Omega$ , 0603, 1%, 1/16W	Any
14	R8	1		Resistor, Film	806 $\Omega$ , 0603, 1%, 1/16W	Any
15	U1	1	ISL6440IAZ	300kHz, Dual PWM Controller		Intersil

**ISL6440EVAL1Z Layout**

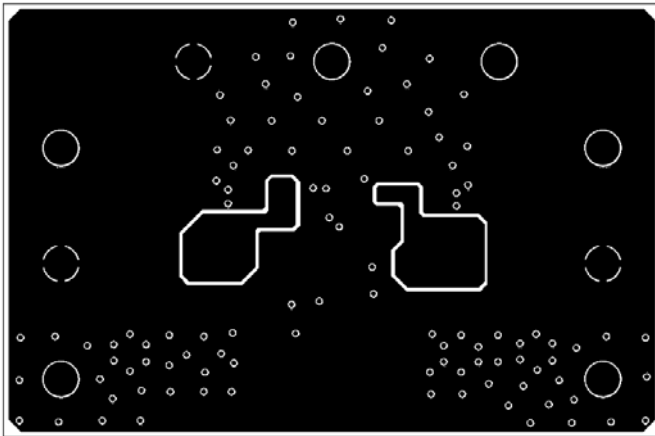


TOP SILK

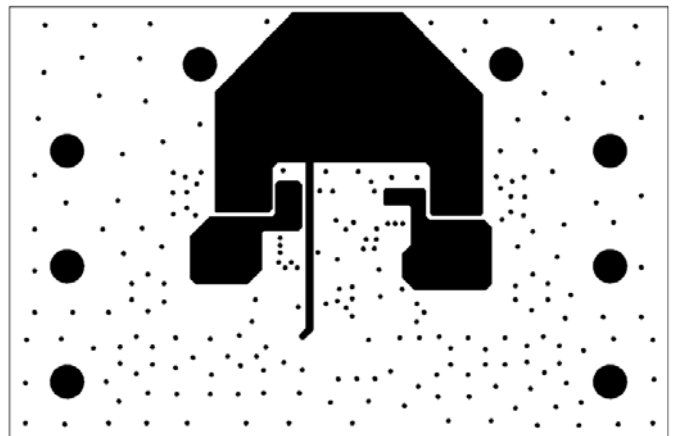


LAYER 1

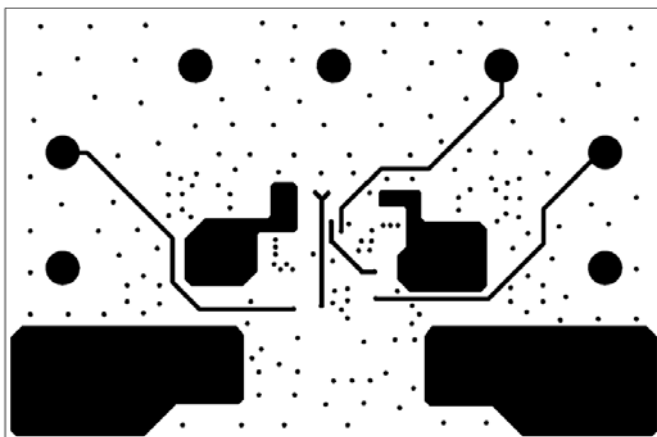
ISL6440EVAL1Z Layout (Continued)



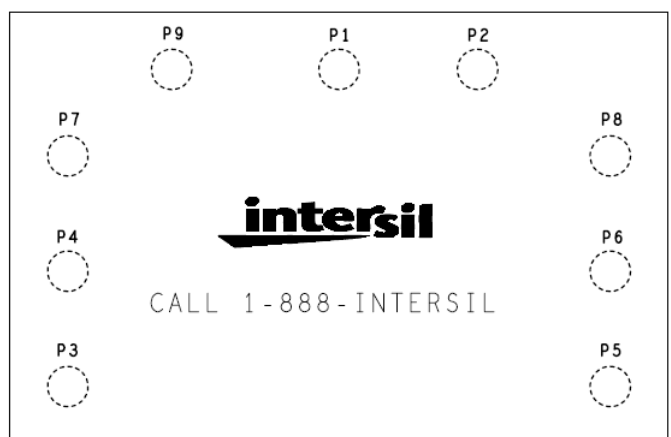
LAYER 2



LAYER 3



LAYER 4



BOTTOM SILK

Intersil Corporation reserves the right to make changes in circuit design, software and/or specifications at any time without notice. Accordingly, the reader is cautioned to verify that the Application Note or Technical Brief is current before proceeding.

For information regarding Intersil Corporation and its products, see [www.intersil.com](http://www.intersil.com)