

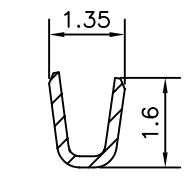
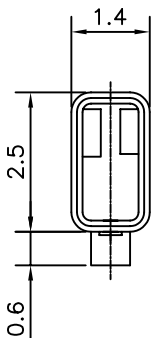
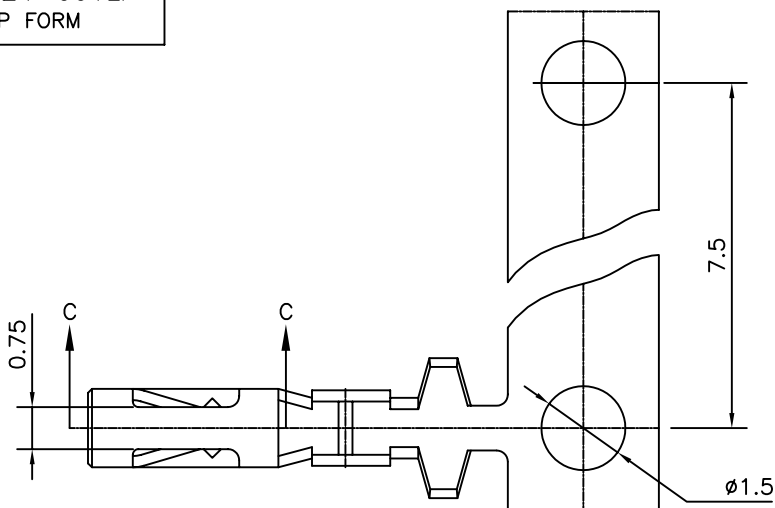
PART NO. 76624-001LF
STRIP FORM

A

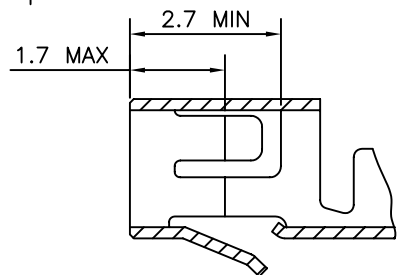
B

C

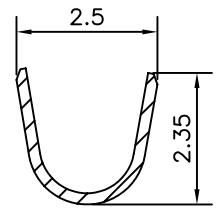
D



SECTION-AA



SECTION-CC



SECTION-BB

TECHNICAL DATA:

- PHYSICAL:**
 MATERIAL - PHOSPHER BRONZE
 PLATING - 1µ MIN. TIN PLATED
- ELECTRICAL PERFORMANCE:**
 CURRENT RATING - 2 AMP. DC
 CONTACT RESISTANCE - 20mΩ.Max.
- PACKAGING:**
 REEL - 4000 PCS PER REEL

1.LF Products meet European Union Directives and other country Regulations as described in GS-22-008.
 2.Lead Free or ROHS Directive labelling to be provided as per GS-14-920 for Lead Free version.



FCIconnect.com

Copyright FCI

mat'l. code			surface ISO 1302 ✓		tolerance ISO 406 ISO 1101		projection		product family RELIMATE			
ltr			ecn no		dr		date		title			
H			106-0023		HVN		2006-07-20		RELIMATE TERMINAL (AWG#22-#26)			
J			110-0147		NPM		2010-07-10		scale 8:1			
dr			MINI K VANDANATH		2003-04-14		engr		HIRAN.V.N		2003-04-14	
chr			NEBUPM		2010-07-10		appd		NEBUPM		2010-07-10	
sheet index			revision sheet		J		1		dwg no		sheet 1 of 1 size A4	
									76624		5	
									type Product Customer Drawing			

form: A4

PDM: Rev:J

STATUS: Released

Printed: Jul 11, 2010